

For Lease
Office Space



3 Park Plaza

Wyomissing, PA 19610

Property Features

- Centrally located in Berks County
- Great highway access
- Move-in ready spaces
- Close to many local food and entertainment amenities

For more information, contact

Kyle McKechnie

+1 610 370 8522

kmckechnie@naikeystone.com

Bryan Cole, SIOR

+1 610 370 8502

bcole@naikeystone.com



875 Berkshire Blvd, Suite 102

Wyomissing, PA 19610

+1 610 779 1400

naikeystone.com

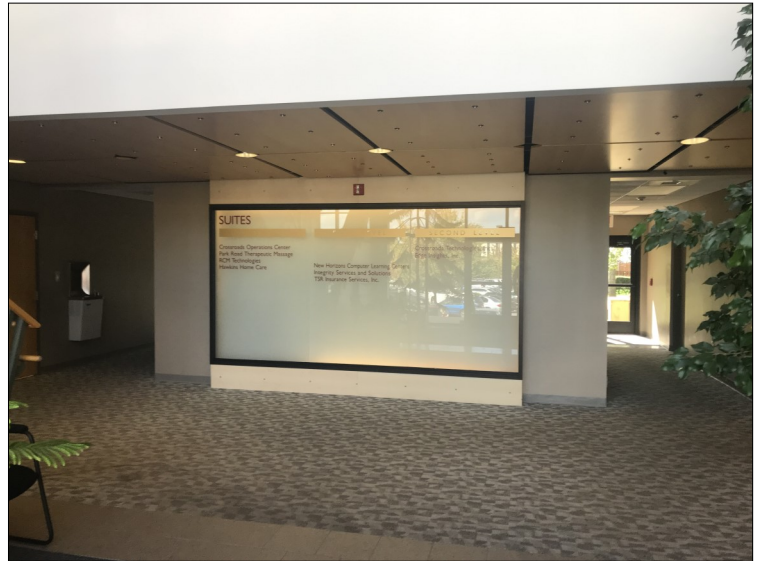
NO WARRANTY OR REPRESENTATION, EXPRESS OR IMPLIED, IS MADE AS TO THE ACCURACY OF THE INFORMATION CONTAINED HEREIN, AND THE SAME IS SUBMITTED SUBJECT TO ERRORS, OMISSIONS, CHANGE OF PRICE, RENTAL OR OTHER CONDITIONS, PRIOR SALE, LEASE OR FINANCING, OR WITHDRAWAL WITHOUT NOTICE, AND OF ANY SPECIAL LISTING CONDITIONS IMPOSED BY OUR PRINCIPALS NO WARRANTIES OR REPRESENTATIONS ARE MADE AS TO THE CONDITION OF THE PROPERTY OR ANY HAZARDS CONTAINED THEREIN ARE ANY TO BE IMPLIED

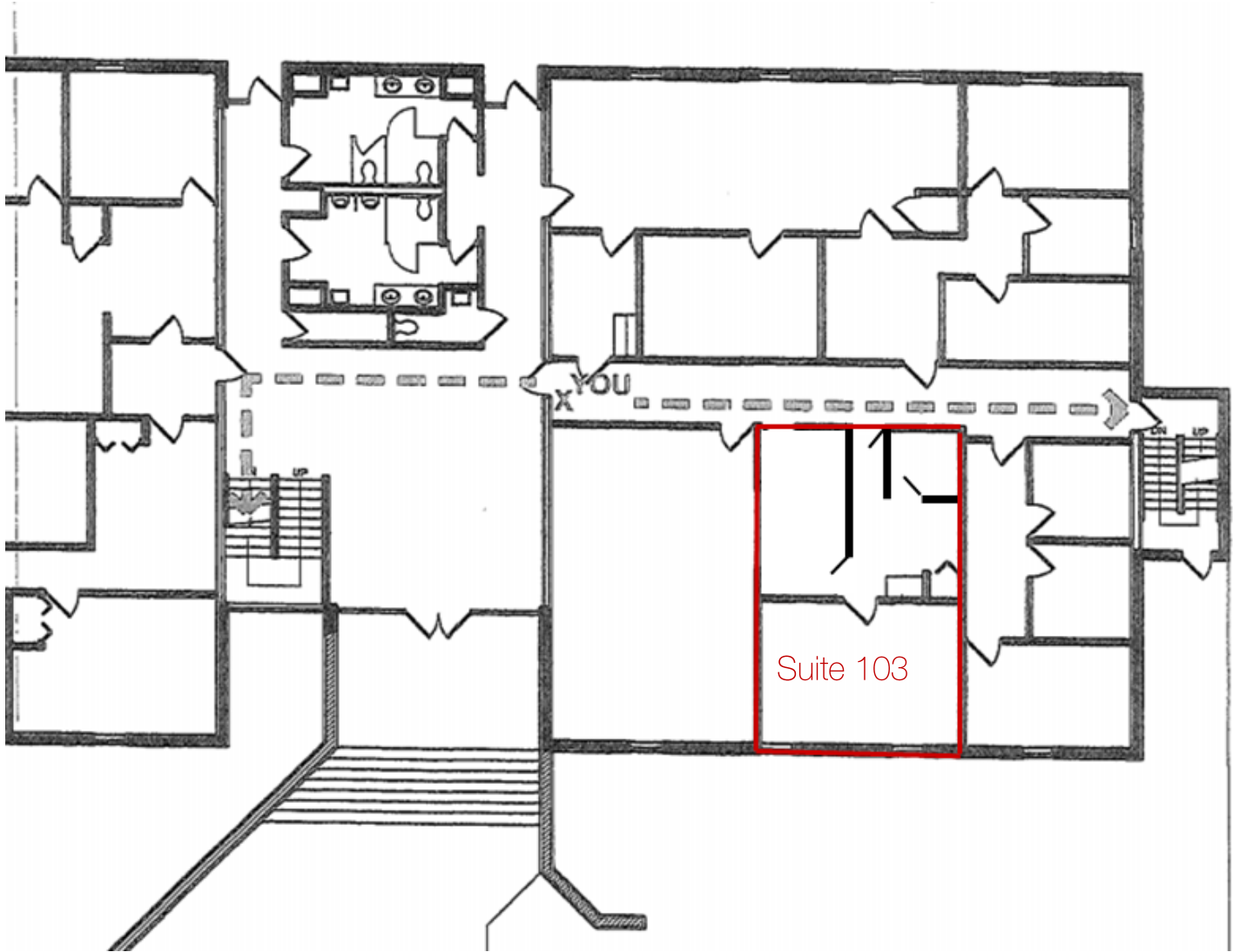
GENERAL DATA	
Property Type:	Office Building
Building Size:	30,000 SF
Zoning:	C-2—Commercial Retail District
Municipality:	Borough of Wyomissing

Located adjacent to Park Road and within a minute of both Rt. 422 and Rt. 222.

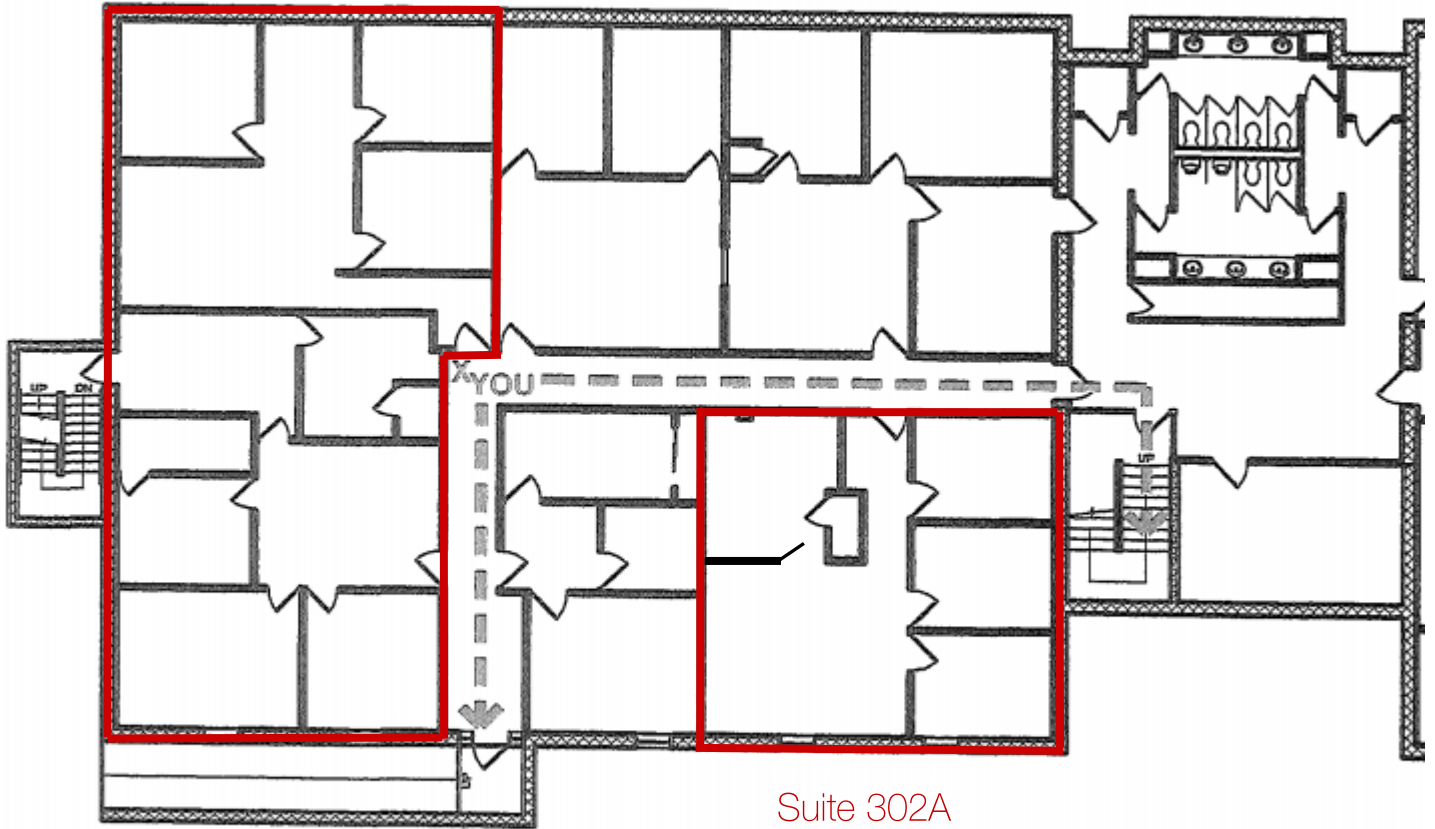


DESCRIPTION	
Available Suites:	103 - 1,344 SF 301/303 - 2,190 SF 302A - 1,005 SF
HVAC:	Central
Parking:	220 spaces
Cross Streets:	N. 6th Street & Douglass Street
Construction Type:	Brick & concrete
Water/Sewer:	Public
Electric:	At Tenant cost
Rental Rate:	Upon request
Lease Type:	NNN (Currently estimated at \$5.25/SF)





Suite 301/303



Suite 302A

For Lease
3 Park Plaza

Bird's Eye View



220 Parking Spaces

NAIKeystone

875 Berkshire Blvd, Suite 102
Wyomissing, PA 19610
+1 610 779 1400
naikeystone.com