

For Sale or Lease

440 N. Claude A Lord Blvd

17901, PA Pottsville



Former Sand's Dealership

440 N. Claude A Lord Blvd
17901, Pennsylvania Pottsville

Property Highlights

- 15,000 VPD traffic count
- Abundant parking
- Prominent property on Route 61 in Pottsville
- Adaptable to a variety of uses
- Centralized location in Schuylkill county
- 3 Drive-in Doors

Property Description

Former car dealership and shop. This property comes with a showroom, offices, shop, and service departments. The property could be re-purposed for a different use or continue as a sales and service facility. Abundant parking on site with +/- 170 parking spaces. Prominent visibility and signage on Rt. 61.

OFFERING SUMMARY

Sale Price	\$1,095,000
Lease Rate	Negotiable
Available SF	15,100 SF
Lot Size	8.46 Acres
Building Size	15,100 SF

DEMOGRAPHICS

Stats	Population	Avg. HH Income
1 Mile	9,636	\$36,578
3 Miles	30,400	\$45,015
5 Miles	49,340	\$48,028

VIEW PROPERTY VIDEO

For more information

John Buccinno, SIOR CCIM

O: 610 370 8508
jbuccinno@naikeystone.com

Kyle McKechnie

O: 610 370 8522
kmckechnie@naikeystone.com

For Sale or Lease

440 N. Claude A Lord Blvd

17901, PA Pottsville

PROPERTY NAME:	Former Sand's Dealership
PROPERTY ADDRESS:	440 N. Claude A Lord Blvd 17901, PA Pottsville
PROPERTY TYPE:	Retail
APN:	68-14-0036.001
LOT SIZE:	8.46 Acres
GROSS LEASABLE AREA:	15,100 +/- SF
BUILDING CLASS:	B
ZONING:	C-2 Community Commercial District
YEAR BUILT:	1990
NUMBER OF STORIES:	2
DRIVE-IN DOORS:	2



For Sale or Lease

440 N. Claude A Lord Blvd

17901, PA Pottsville



For Sale or Lease

440 N. Claude A Lord Blvd

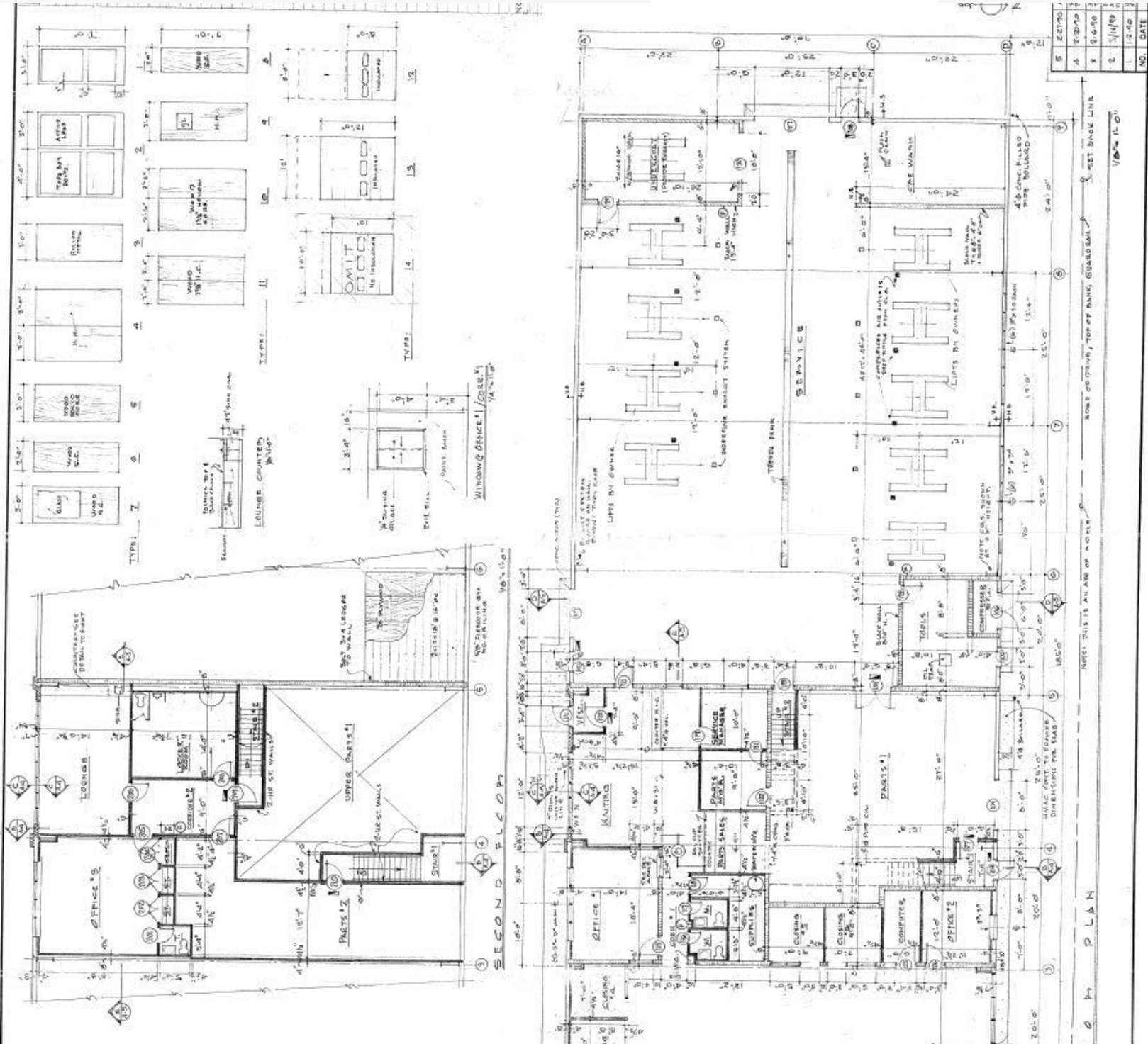
17901, PA Pottsville



For Sale or Lease

440 N. Claude A Lord Blvd

17901, PA Pottsville



For Sale or Lease

440 N. Claude A Lord Blvd

17901, PA Pottsville



For Sale or Lease

440 N. Claude A Lord Blvd

17901, PA Pottsville



Google

© 2014 Pennsylvania Department of Conservation and Natural Resources-PAMAP/USGS, USDA Farm Service Agency

NAIKeystone

COMMERCIAL REAL ESTATE SERVICES, WORLDWIDE

875 Berkshire Boulevard Suite 102

Wyomissing, PA 19610

610 779 1400 tel

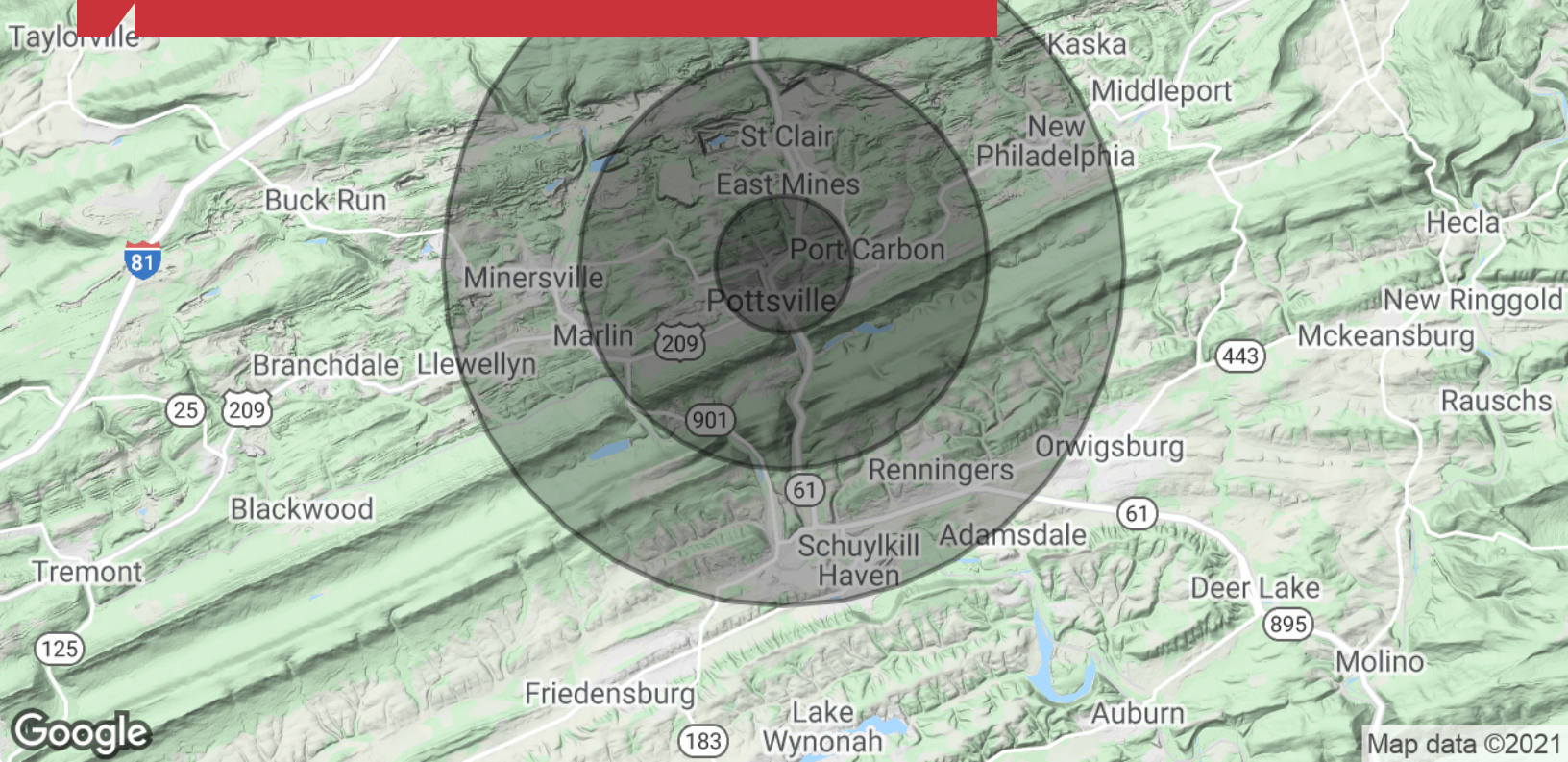
naikeystone.com



For Sale or Lease

440 N. Claude A Lord Blvd

17901, PA Pottsville



	1 Mile	3 Miles	5 Miles
Population			
TOTAL POPULATION	9,636	30,400	49,340
MEDIAN AGE	36.6	40.4	40.6
MEDIAN AGE (MALE)	35.9	38.8	38.8
MEDIAN AGE (FEMALE)	37.1	42.5	42.4
Households & Income			
TOTAL HOUSEHOLDS	3,886	12,869	20,907
# OF PERSONS PER HH	2.5	2.4	2.4
AVERAGE HH INCOME	\$36,578	\$45,015	\$48,028
AVERAGE HOUSE VALUE	\$59,479	\$88,390	\$87,085
Race			
% WHITE	93.9%	95.7%	96.6%
% BLACK	5.7%	3.1%	2.1%
% ASIAN	0.1%	0.8%	0.9%
% HAWAIIAN	0.0%	0.0%	0.0%
% INDIAN	0.3%	0.2%	0.2%
% OTHER	0.0%	0.1%	0.2%
Ethnicity			
% HISPANIC	1.2%	1.5%	1.4%

* Demographic data derived from 2010 US Census