



For Sale

# Land

12.91 Acres | \$123,935 / AC

## East Point Dr

East Point Dr  
Birdsboro, Pennsylvania 19508

### Property Highlights

- 12.91 acre lot
- Prime location
- Industrial park setting
- Easy access to major highways

### Property Description

Land parcel containing 12.91 acres located in an industrial park. The property is zone for industrial use. Excellent location on PA Route 724. This property is in close proximity to route 176 with easy access to route 422 and the Pennsylvania Turnpike.

For more information

**Bryan Cole, SIOR**

O: 610 370 8502 | C:  
bcole@naikeystone.com

**John Buccinno, SIOR CCIM**

O: 610 370 8508 | C:  
jbuccinno@naikeystone.com

### OFFERING SUMMARY

<b>Sale Price</b>	\$1,600,000
<b>Lot Size</b>	12.91 Acres

### DEMOGRAPHICS

Stats	Population	Avg. HH Income
<b>1 Mile</b>	3,085	\$74,904
<b>5 Miles</b>	172,954	\$53,157
<b>10 Miles</b>	337,903	\$63,627

[VIEW PROPERTY VIDEO](#)

For Sale

# Land

12.91 Acres | \$123,935 / AC



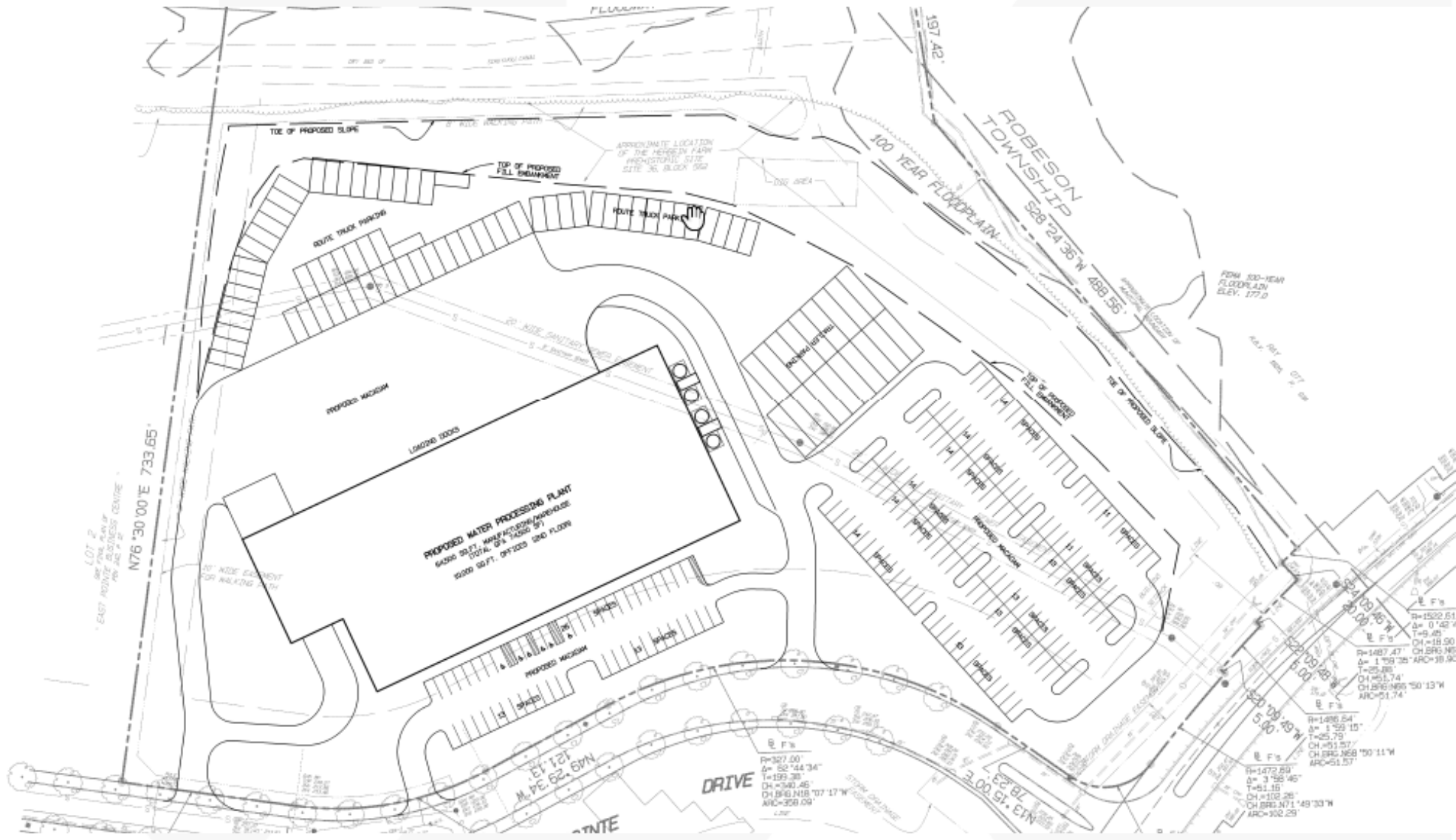
DRONE PHOTO

**NAI**Keystone

For Sale

# Land

12.91 Acres | \$123,935 / AC



For Sale

# Land

12.91 Acres | \$123,935 / AC

PROPERTY ADDRESS: East Point Dr  
Birdsboro, PA 19508

APN: 5315-02-76-8404

LOT SIZE: 12.91 Acres

ZONING: Industrial





For Sale

# Land

12.91 Acres | \$123,935 / AC



Google

Imagery ©2021 TerraMetrics

**NAI**Keystone  
COMMERCIAL REAL ESTATE SERVICES, WORLDWIDE

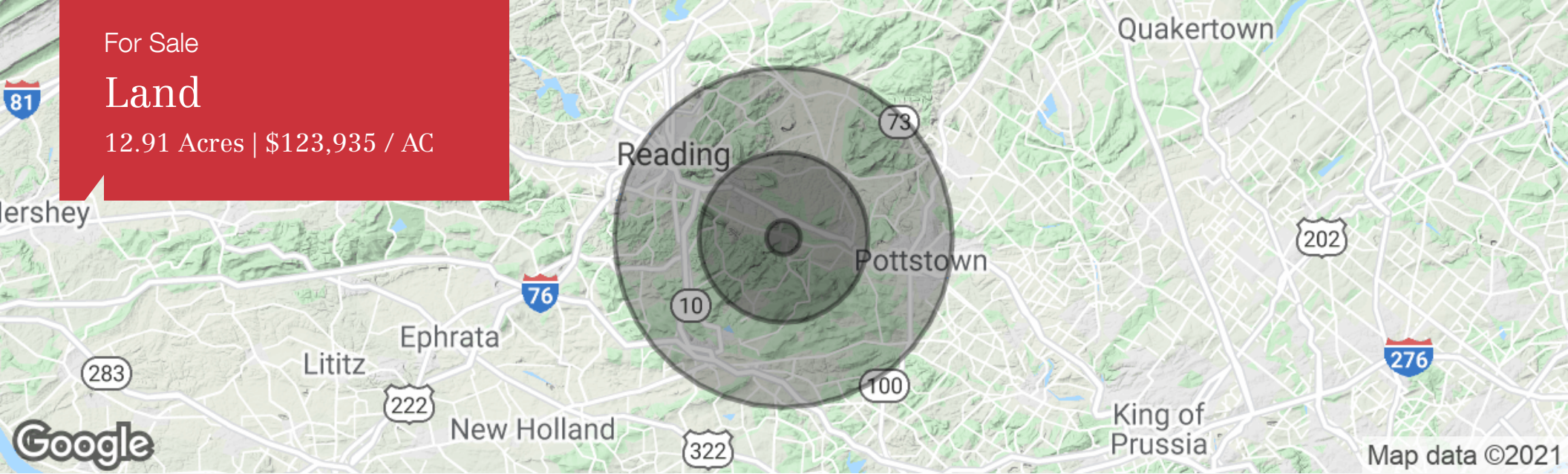
875 Berkshire Boulevard Suite 102  
Wyomissing, PA 19610  
610 779 1400 tel  
<https://naikeystone.com>



For Sale

# Land

12.91 Acres | \$123,935 / AC



	1 Mile	5 Miles	10 Miles
<b>Population</b>			
Total Population	3,085	172,954	337,903
Median Age	42.2	34.6	37.7
Median Age (Male)	43.0	33.4	36.2
Median Age (Female)	41.7	35.6	39.1
<b>Households &amp; Income</b>			
Total Households	1,318	64,208	128,347
# of Persons Per HH	2.3	2.7	2.6
Average HH Income	\$74,904	\$53,157	\$63,627
Average House Value		\$149,330	\$193,933
<b>Race</b>			
% White	90.3%	68.3%	78.5%
% Black	5.8%	8.5%	6.0%
% Asian	0.9%	1.4%	1.6%
% Hawaiian	0.0%	0.0%	0.0%
% Indian	0.0%	0.2%	0.1%
% Other	1.2%	18.0%	11.3%
<b>Ethnicity</b>			
% Hispanic	3.6%	34.3%	22.0%

\* Demographic data derived from 2010 US Census

# East Point Dr

East Point Dr

Birdsboro, Pennsylvania 19508

For more information:

**Bryan Cole, SIOR**

O: 610 370 8502

bcole@naikeystone.com

**John Buccinno, SIOR CCIM**

O: 610 370 8508

jbuccinno@naikeystone.com

