

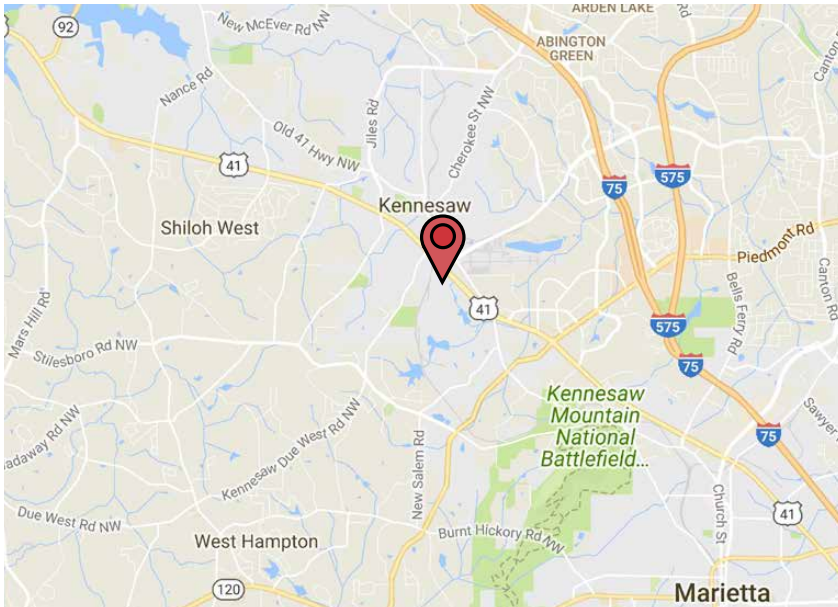
For Lease

4,960–10,720 SF  
Warehouse/Office Space



## Cobb International Business Park

1890-2010 Cobb International Boulevard  
Kennesaw, Georgia 30152



Quality brick-on-block construction

Continuous glass storefronts

Rear-loading dock-high and drive-in ramps

Sprinklered

Well-tended landscaping in controlled park setting

Direct access to I-75 via Chastain Road

Located off Highway 41, 1.5 miles north of Barrett Parkway

Information is deemed from reliable sources. No warranty is made as to its accuracy.

### BROKER Information

**Mark Sheffield**

404 812 4007

[mshffield@naibg.com](mailto:mshffield@naibg.com)

**Ken Wiesen**

404 812 4010

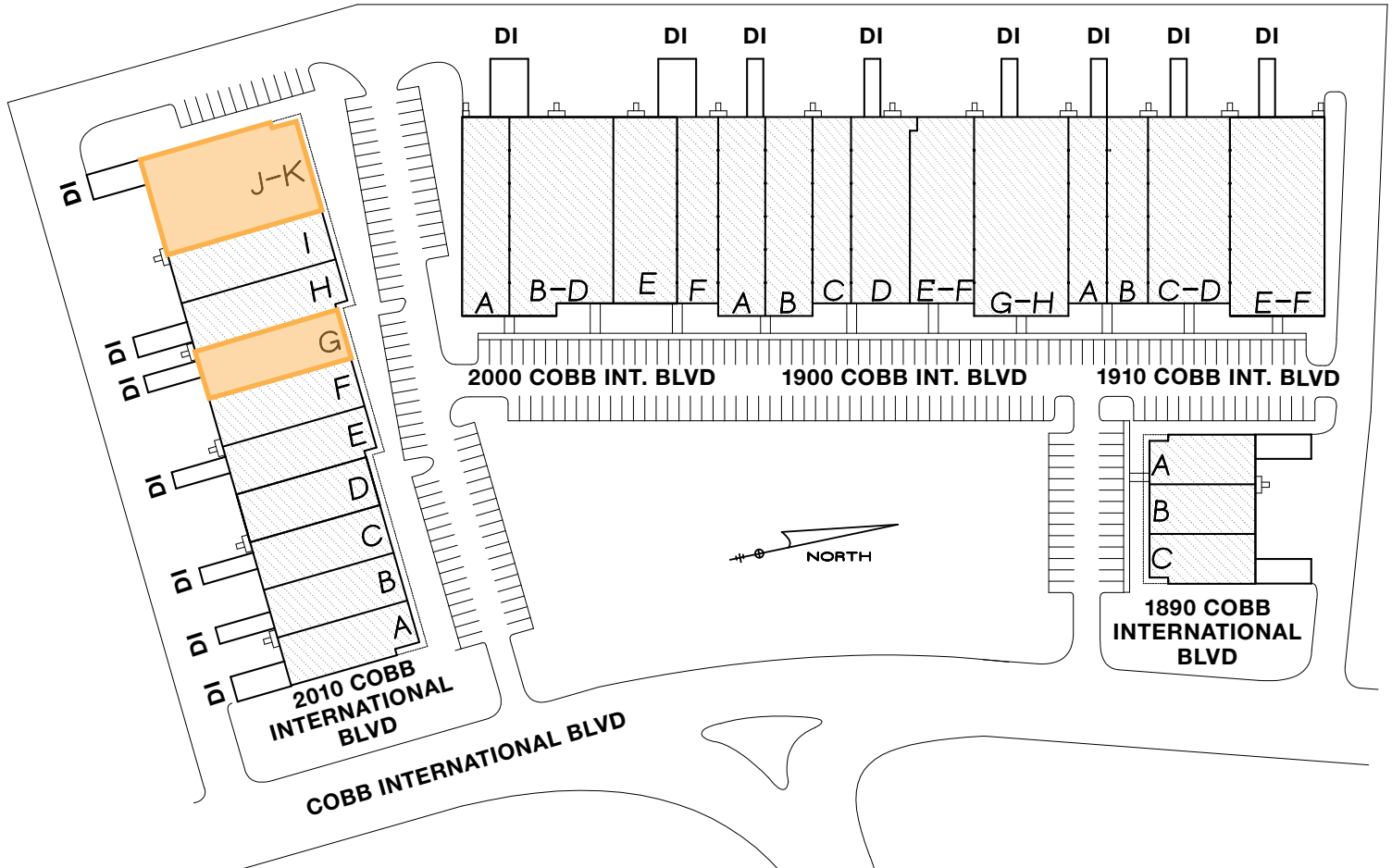
[kwiesen@naibg.com](mailto:kwiesen@naibg.com)

5555 Glenridge Connector, Suite 1100

Atlanta, GA 30342

404 812 4000

[naibg.com](http://naibg.com)



## 2010 Cobb Intl Blvd

Suite	Total SF	Office SF
G	4,960	1,019
J-K	10,720	2,400

## 2000 Cobb Intl Blvd 100% Leased

## 2000 Cobb Intl Blvd 100% Leased

## 2000 Cobb Intl Blvd 100% Leased

## 1890 Cobb Intl Blvd 100% Leased

## BROKER Information

**Mark Sheffield**

404 812 4007  
msheffield@naibg.com

**Ken Wiesen**

404 812 4010  
kwiesen@naibg.com

*Information is deemed from reliable sources. No warranty is made as to its accuracy.*

SUITE	TOTAL SF	OFFICE SF	DH/DI	BASE RENTAL RATE	AVAILABLE
BUILDING 2010					
G	4,960	1,019	1 / 1	Inquire	Now
J-K	10,720	2,400	2 / 1	Inquire	1st Quarter 2021

## BROKER Information

**Mark Sheffield**

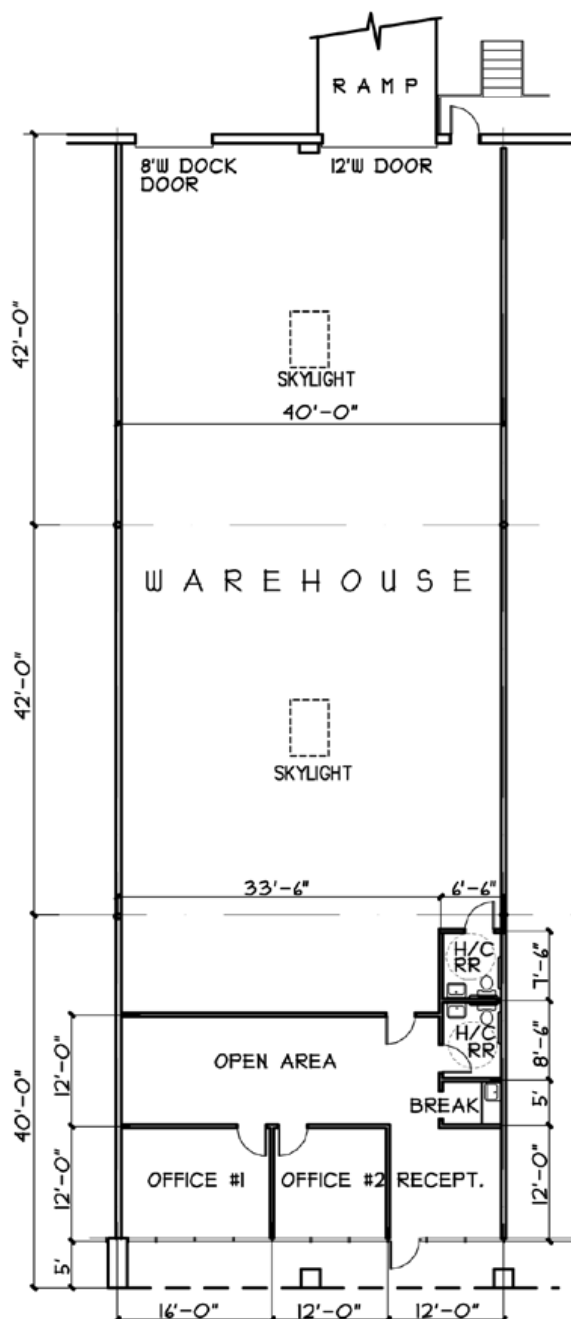
404 812 4007  
msheffield@naibg.com

**Ken Wiesen**

404 812 4010  
kwiesen@naibg.com

*Information is deemed from reliable sources. No warranty is made as to its accuracy.*

2010 COBB INTERNATIONAL BLVD  
Suite G



Office SF:	1,019
Warehouse SF:	3,941
<b>Total SF</b>	<b>4,960</b>

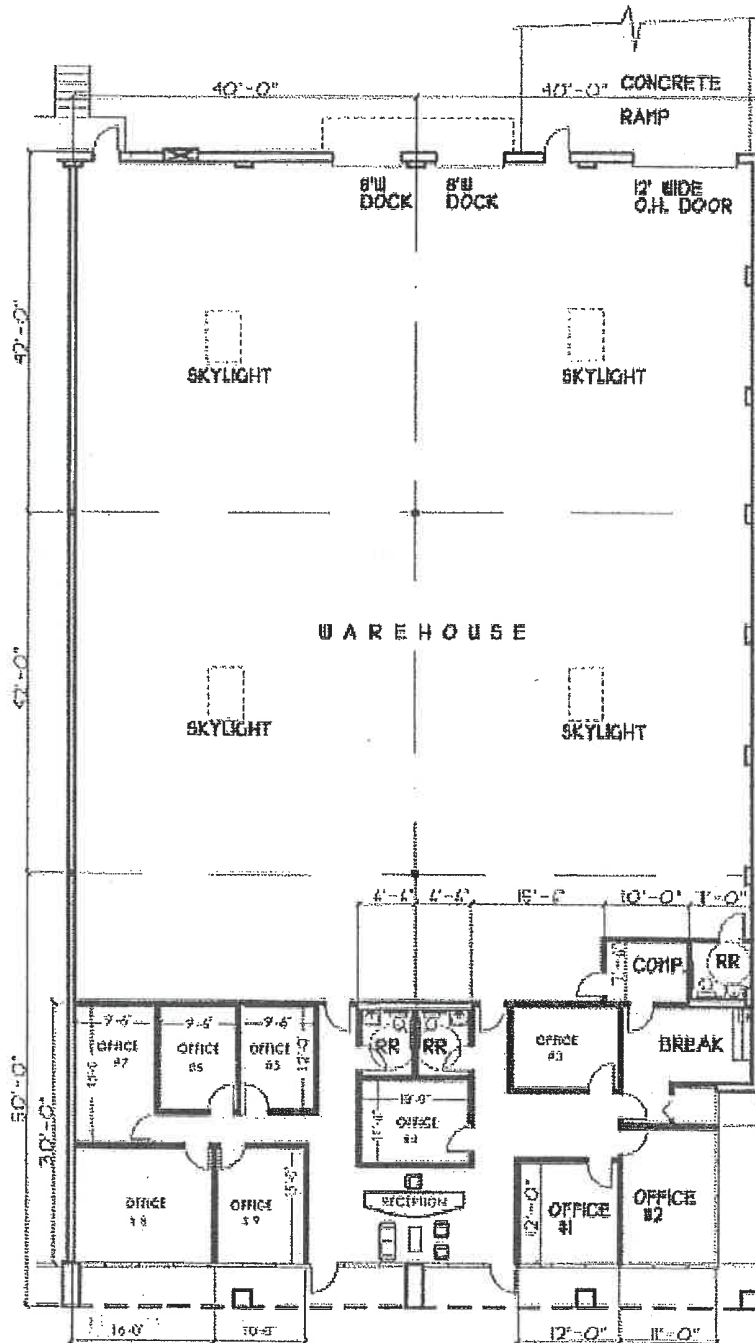
### BROKER Information

**Mark Sheffield**  
404 812 4007  
msheffield@naibg.com

**Ken Wiesen**  
404 812 4010  
kwiesen@naibg.com

*Information is deemed from reliable sources. No warranty is made as to its accuracy.*

2010 COBB INTERNATIONAL BLVD  
Suite J-K



Office SF:	2,400
Warehouse SF:	8,320
<b>Total SF</b>	<b>10,720</b>

### BROKER Information

**Mark Sheffield**  
404 812 4007  
msheffield@naibg.com

**Ken Wiesen**  
404 812 4010  
kwiesen@naibg.com

*Information is deemed from reliable sources. No warranty is made as to its accuracy.*