

For Lease

# Office Building

\$19.50 SF/yr

## Kaden Tower Office Space For Lease

6100 Dutchmans Lane  
Louisville, Kentucky 40205

### Property Description

Newly renovated, Kaden Tower has desirable office space available. This Frank Lloyd Wright inspired, 16 floor, class A office building offers 24 hour security 365 days a year. Additional features include janitorial services 5 days a week along with on-site management staff. There is also a beautiful civic center located in the lower level, available to rent for seminars, parties and meetings (max. cap. 250). It is conveniently located in a suburban area with high-end retail and office on the prestigious East End of Louisville and only 10 minutes from downtown Louisville, while also being adjacent to I-64 and I-264.

### Property Highlights

- 6,629 sf available on the 11th Floor
- 16 Floor Class A Building
- 24 hour Security 365 days a year
- In close proximity to Interstate 264 and Interstate 64

#### OFFERING SUMMARY

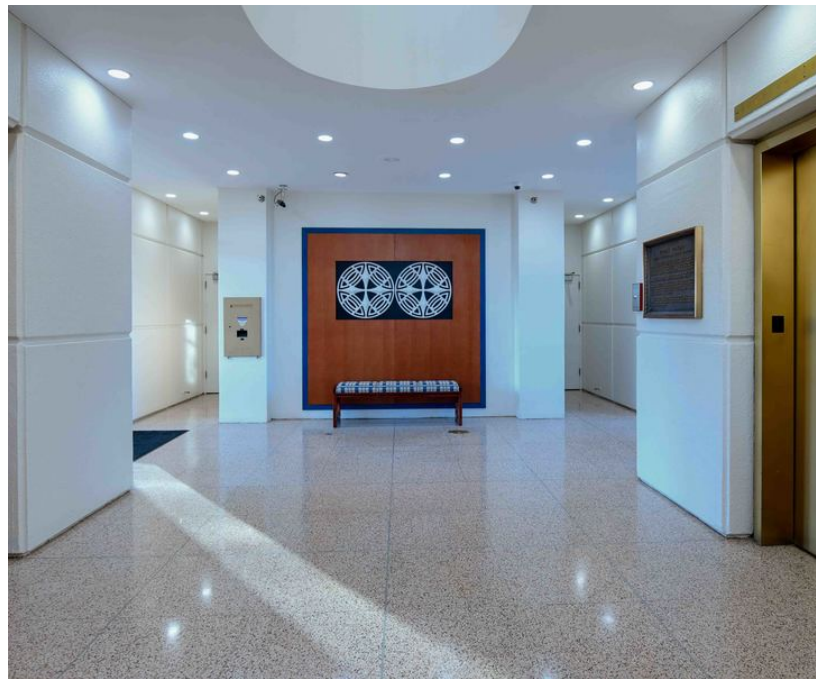
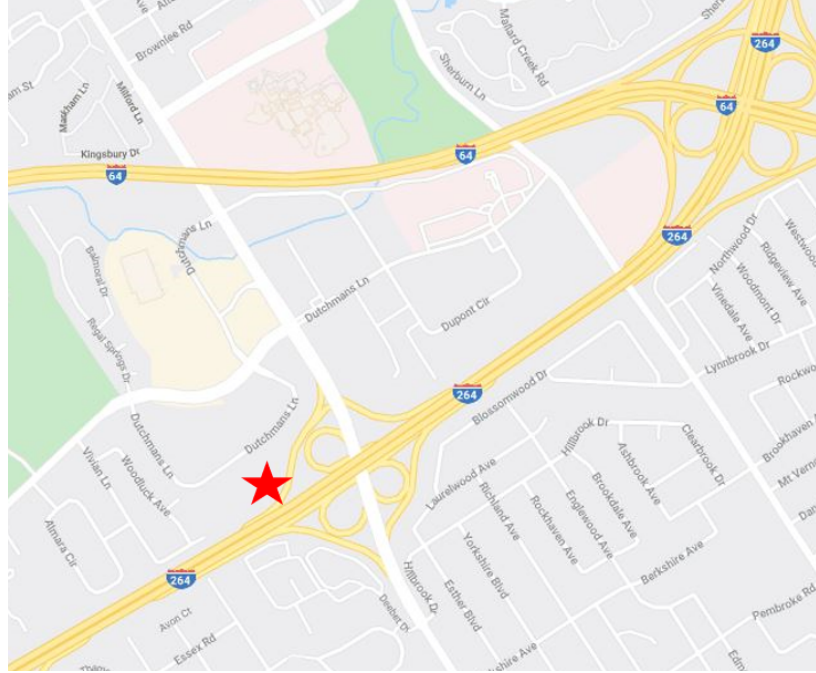
<b>Available SF</b>	6,629 SF
<b>Lease Rate</b>	\$19.50 SF/yr (Full Service)
<b>Building Size</b>	115,530 SF

For more information

**Mark Wardlaw**

O: 502 583 4040  
mwardlaw@naifortis.com

# Additional Photos



**NAI**Fortis Group

We obtained the information above from sources we believe to be reliable. However, we have not verified its accuracy and make no guarantee, warranty or representation about it. It is submitted subject to the possibility of errors, omissions, change of price, rental or other conditions, prior sale, lease or financing, or withdrawal without notice. We include projections, opinions, assumptions or estimates for example only, and they may not represent current or future performance of the property. You and your tax and legal advisors should conduct your own investigation of the property and transaction.

462 South 4th Street  
Louisville, Kentucky 40202  
502 583 4040 tel

[naifortis.com](http://naifortis.com)