



Wyomissing Professional Center - 945

945 Berkshire Blvd.
Wyomissing, Pennsylvania 19610

Property Highlights

- Single Story Direct Access
- Ample Surface Parking
- Easy Access to Public Transit and Highways
- Plenty of Natural Lighting
- Professionally Managed

Offering Summary

Lease Rate:	Negotiable
Building Size:	10,634 SF
Available SF:	1,464 - 10,634 SF

[View Property Video](#)

For More Information

Bryan Cole, SIOR
O: 610 370 8502
bcole@naikeystone.com

For Lease

1,464 - 10,634 SF | Negotiable
Office Space



Location Information

Building Name	Wyomissing Professional Center - 945
Street Address	945 Berkshire Blvd.
City, State, Zip	Wyomissing, PA 19610
County	Berks
Market	Wyomissing
Signal Intersection	No

Building Information

Building Class	B
Tenancy	Multiple
Number of Floors	1
Average Floor Size	10,634 SF
Year Built	1994
Free Standing	No

Property Highlights

- Single Story Direct Access
- Ample Surface Parking
- Easy Access to Public Transit and Highways
- Plenty of Natural Light
- Professionally Managed



Lease Information

Lease Type:	NNN	Lease Term:	Negotiable
Total Space:	1,464 - 10,634 SF	Lease Rate:	Negotiable

Available Spaces

Suite	Tenant	Size (SF)	Lease Type	Lease Rate	Description
Suite 100	Available	3,000 - 5,435 SF	NNN	Negotiable	-
Suite 101	Available	1,464 - 10,634 SF	NNN	Negotiable	-
Suite 102	Available	2,065 - 10,634 SF	NNN	Negotiable	-
Suite 103	Available	1,670 - 10,634 SF	NNN	Negotiable	-

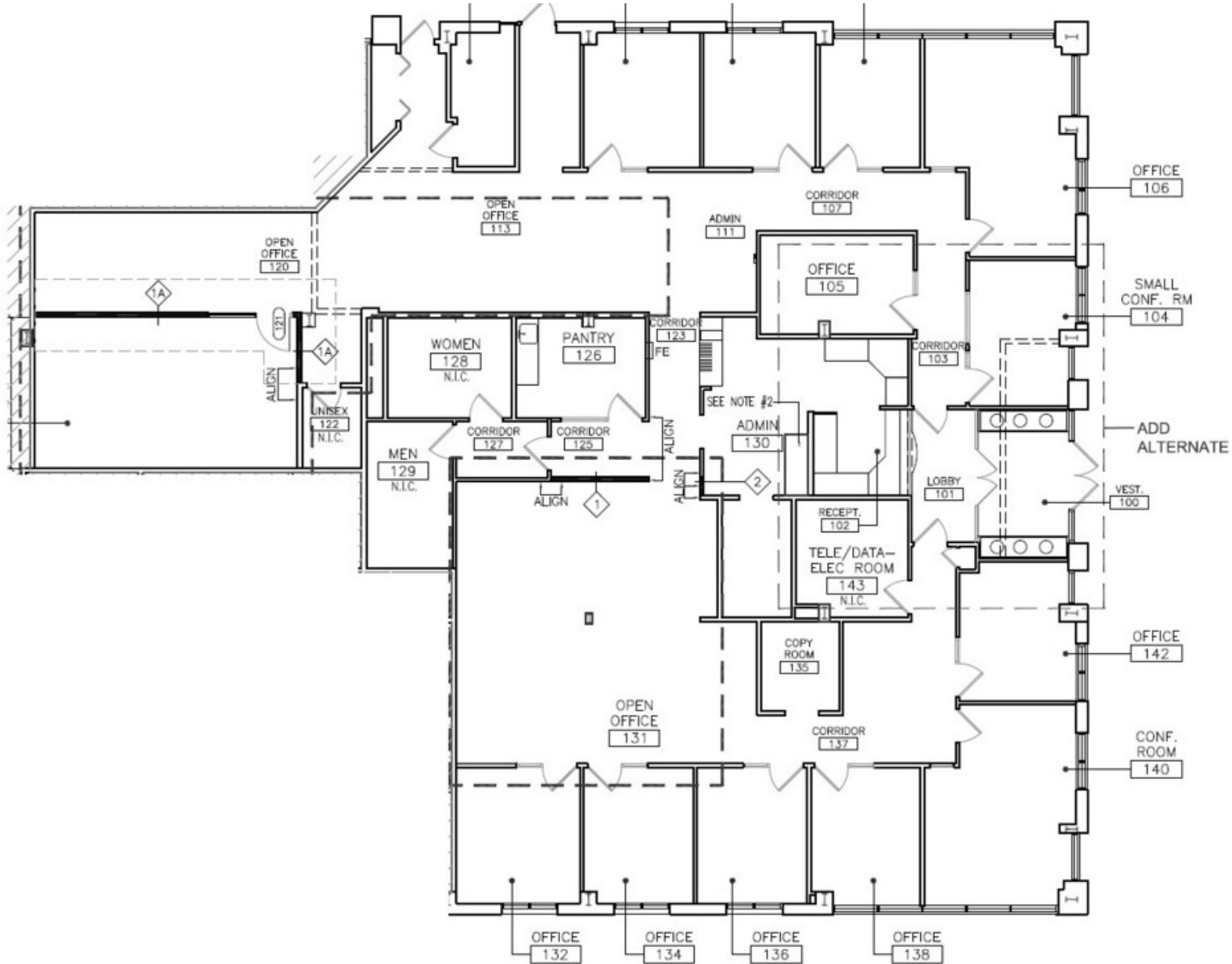
For Lease

1,464 - 10,634 SF | Negotiable
Office Space



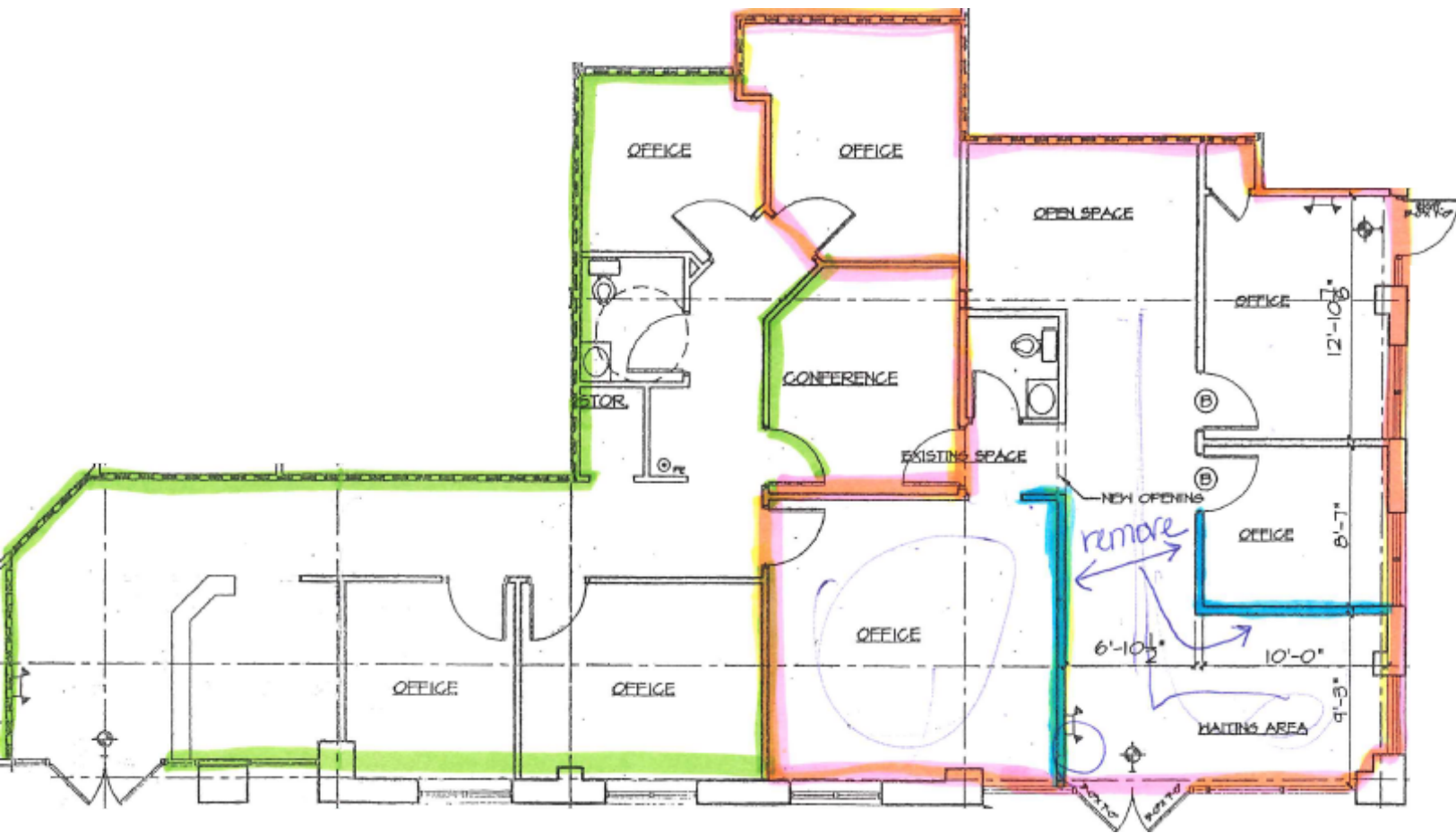
We obtained the information above from sources we believe to be reliable. However, we have not verified its accuracy and make no guarantee, warranty or representation about it. It is submitted subject to the possibility of errors, omissions, change of price, rental or other conditions, prior sale, lease or financing, or withdrawal without notice. We include projections, opinions, assumptions or estimates for example only, and they may not represent current or future performance of the property. You and your tax and legal advisors should conduct your own investigation of the property and transaction.

875 Berkshire Boulevard Suite 102
Wyomissing, PA 19610
610 779 1400 tel
naikeystone.com



For Lease

1,464 - 10,634 SF | Negotiable
Office Space

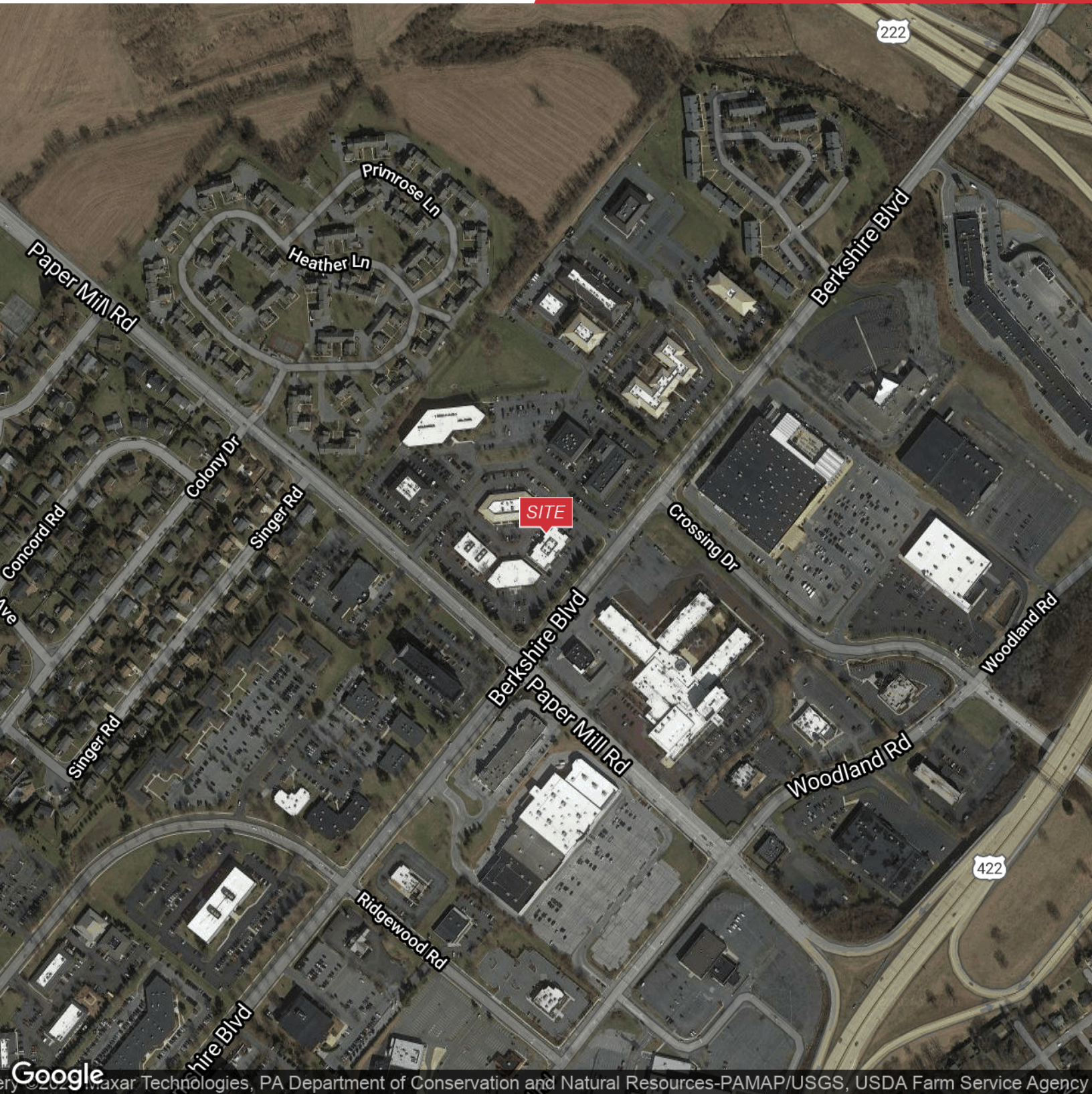


We obtained the information above from sources we believe to be reliable. However, we have not verified its accuracy and make no guarantee, warranty or representation about it. It is submitted subject to the possibility of errors, omissions, change of price, rental or other conditions, prior sale, lease or financing, or withdrawal without notice. We include projections, opinions, assumptions or estimates for example only, and they may not represent current or future performance of the property. You and your tax and legal advisors should conduct your own investigation of the property and transaction.

875 Berkshire Boulevard Suite 102
Wyomissing, PA 19610
610 779 1400 tel
naikeystone.com

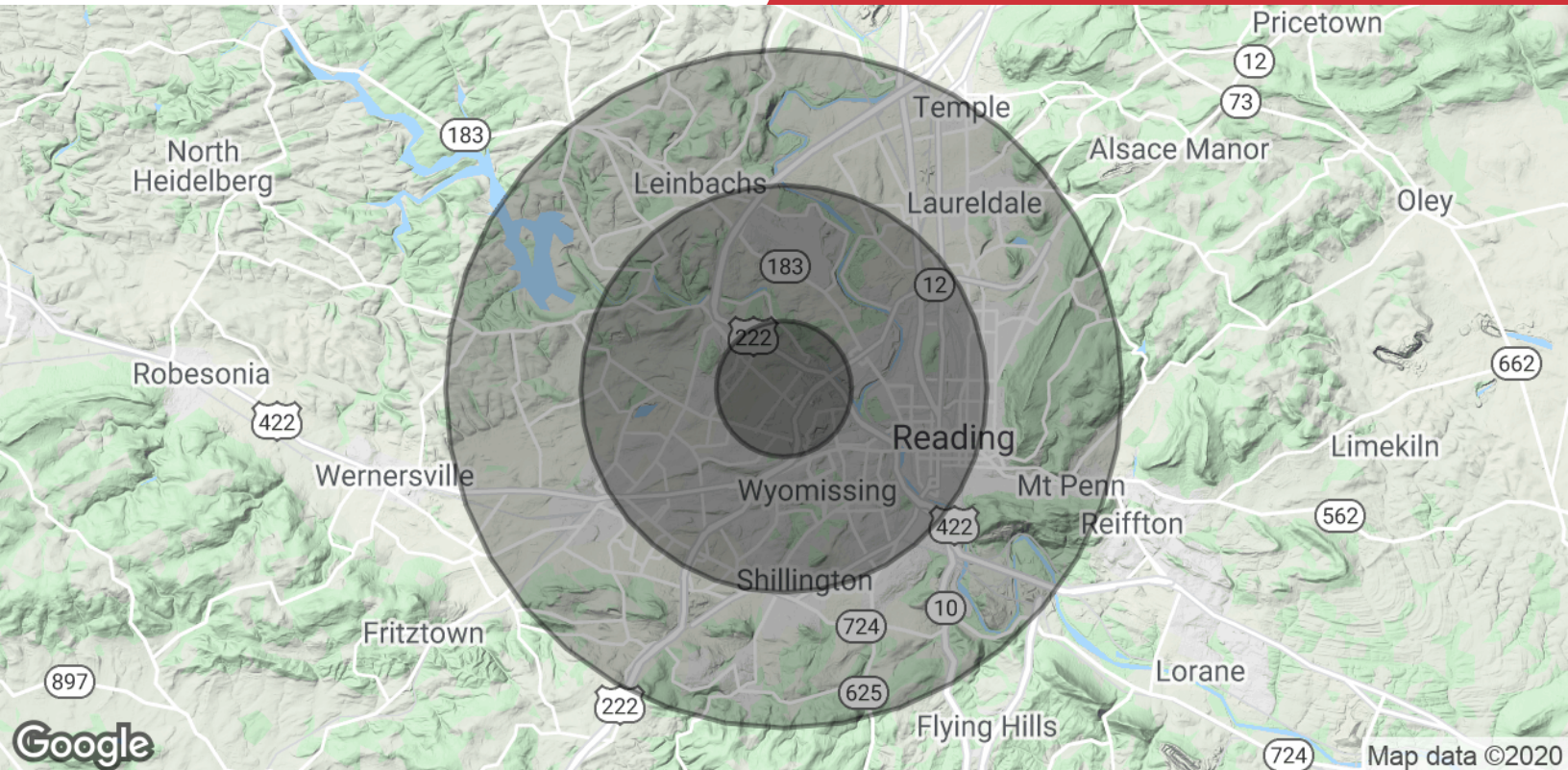
For Lease

1,464 - 10,634 SF | Negotiable
Office Space



We obtained the information above from sources we believe to be reliable. However, we have not verified its accuracy and make no guarantee, warranty or representation about it. It is submitted subject to the possibility of errors, omissions, change of price, rental or other conditions, prior sale, lease or financing, or withdrawal without notice. We include projections, opinions, assumptions or estimates for example only, and they may not represent current or future performance of the property. You and your tax and legal advisors should conduct your own investigation of the property and transaction.

875 Berkshire Boulevard Suite 102
Wyomissing, PA 19610
610 779 1400 tel
naikeystone.com



Population

	1 Mile	3 Miles	5 Miles
Total Population	6,351	83,105	218,920
Average age	43.5	38.1	36.1
Average age (Male)	40.8	35.2	34.0
Average age (Female)	46.4	40.6	38.1

Households & Income

	1 Mile	3 Miles	5 Miles
Total households	2,747	32,170	82,765
# of persons per HH	2.3	2.6	2.6
Average HH income	\$67,264	\$63,319	\$55,974
Average house value	\$208,340	\$197,290	\$174,042

* Demographic data derived from 2010 US Census