



47 Feick Industrial Drive

47 Feick Industrial Dr
Hamburg, Pennsylvania 19526

Property Highlights

- Modern construction built in 2000 with 24-foot ceilings and multiple drive doors
- 800A/480V 3-phase power with buss bars
- 10T Kone Crane - like new!
- Blow-out wall with room to expand on 3+ acre lot
- Next door to new 1,000,075 SF Amazon distribution center
- Easy access to I-78 at the Shartlesville exit

Offering Summary

| | |
|-----------------------|------------|
| Sale Price: | \$750,000 |
| Building Size: | 8,675 SF |
| Lot Size: | 3.07 Acres |

Demographics 1 Mile 5 Miles 10 Miles

| | | | |
|--------------------------|----------|----------|----------|
| Total Households | 153 | 3,699 | 23,035 |
| Total Population | 424 | 10,089 | 60,252 |
| Average HH Income | \$64,286 | \$66,574 | \$65,666 |

[View Property Video](#)

For More Information

Brian McCahon

O: 610 370 8510

bmccahon@naikeystone.com



Offering Summary

| | |
|-------------------------|--------------------|
| Sale Price: | \$750,000 |
| Building Size: | 8,675 SF |
| Available SF: | 8,675 SF |
| Lot Size: | 3.07 Acres |
| Number of Units: | 1 |
| Price / SF: | \$86.46 |
| Year Built: | 2000 |
| Zoning: | General Industrial |

Property Overview

Property is adjacent to new 1,000,075 SF Amazon distribution center. Established industrial park with easy access to I-78 at the Shartlesville exit.

Property Highlights

- Modern construction built in 2000 with 24-foot ceilings and multiple drive doors
- 800A/480V 3-phase power with buss bars
- 10T Kone Crane - like new!
- Blow-out wall with room to expand on 3+ acre lot
- Next door to new 1,000,075 SF distribution center

Sale Price **\$750,000**

Location Information

| | |
|-------------------------|---------------------------|
| Building Name | 47 Feick Industrial Drive |
| Street Address | 47 Feick Industrial Dr |
| City, State, Zip | Hamburg, PA 19526 |
| County | Berks |

Property Information

| | |
|-------------------------|--------------------|
| Property Type | Industrial |
| Property Subtype | Manufacturing |
| Zoning | General Industrial |
| APN # | 28-4453-1166-92-91 |

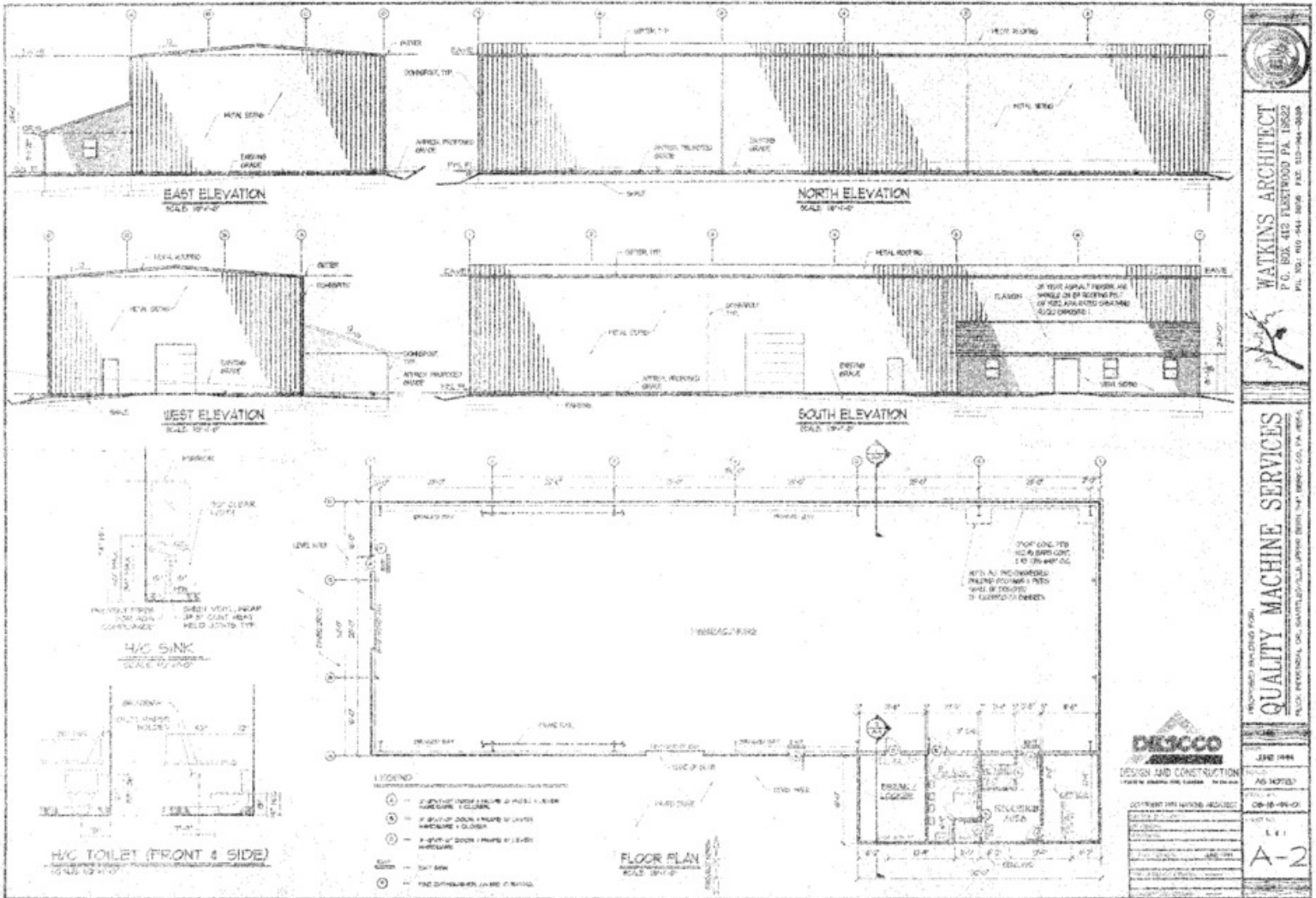
Building Information

| | |
|-------------------------------|----------|
| Occupancy % | 100.0% |
| Tenancy | Single |
| Number of Cranes | 1 |
| Ceiling Height | 24 ft |
| Minimum Ceiling Height | 22 ft |
| Office Space | 600 SF |
| Number of Floors | 1 |
| Average Floor Size | 8,675 SF |
| Year Built | 2000 |
| Gross Leasable Area | 8,675 SF |
| Free Standing | No |



We obtained the information above from sources we believe to be reliable. However, we have not verified its accuracy and make no guarantee, warranty or representation about it. It is submitted subject to the possibility of errors, omissions, change of price, rental or other conditions, prior sale, lease or financing, or withdrawal without notice. We include projections, opinions, assumptions or estimates for example only, and they may not represent current or future performance of the property. You and your tax and legal advisors should conduct your own investigation of the property and transaction.

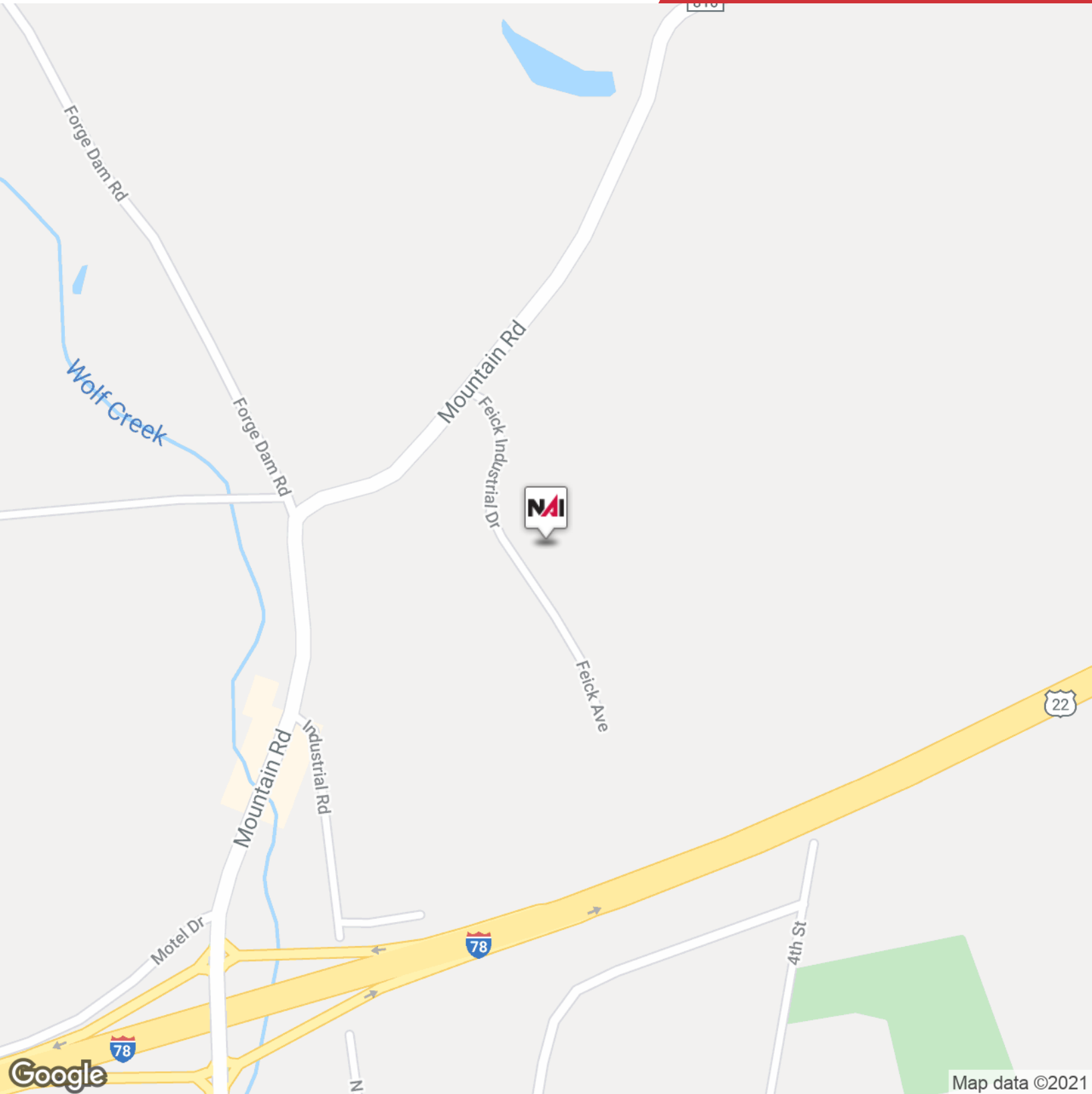
875 Berkshire Boulevard Suite 102
Wyomissing, PA 19610
610 779 1400 tel
naikeystone.com



For Sale

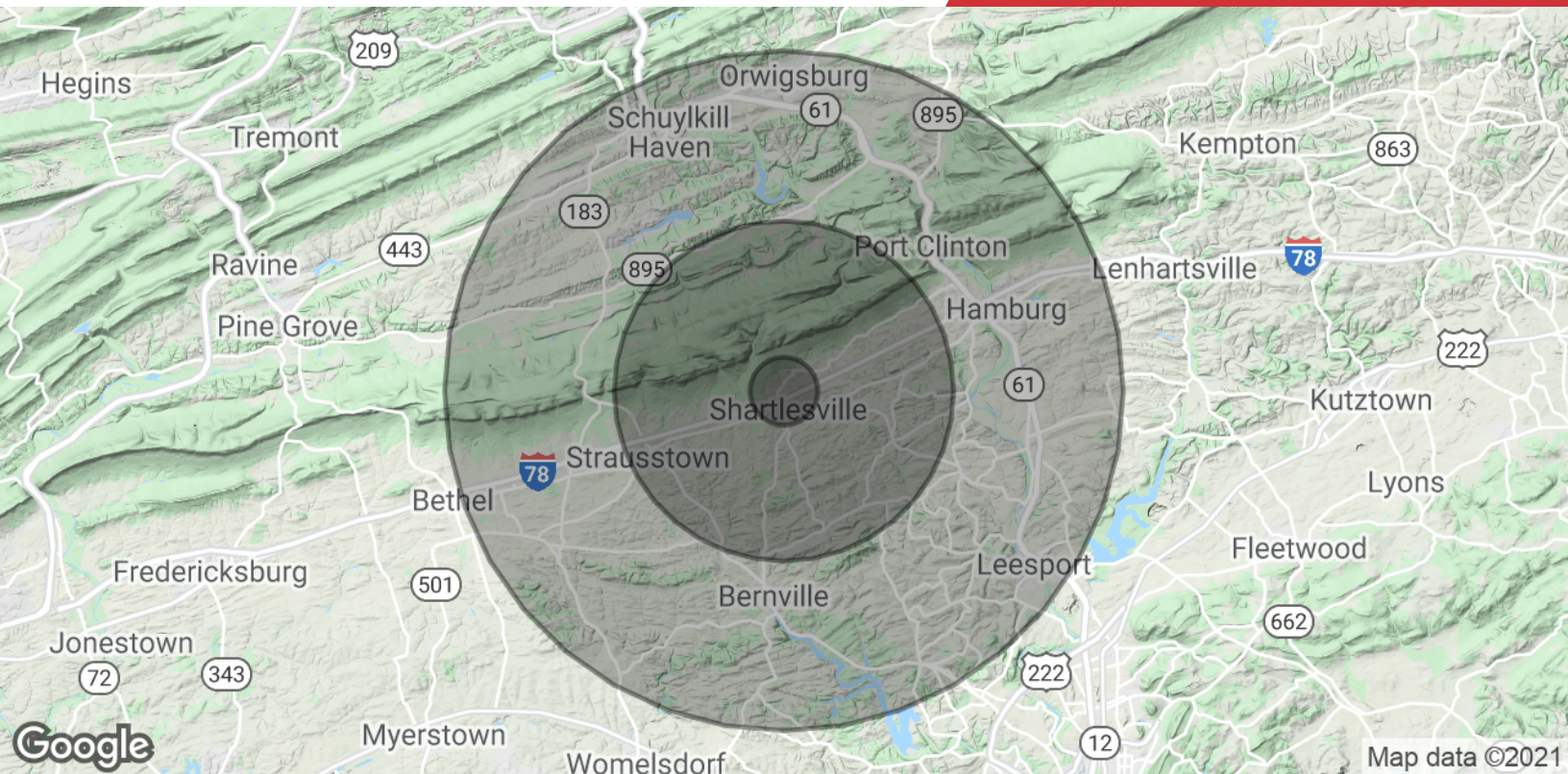
8,675 SF | \$750,000

Industrial Space



We obtained the information above from sources we believe to be reliable. However, we have not verified its accuracy and make no guarantee, warranty or representation about it. It is submitted subject to the possibility of errors, omissions, change of price, rental or other conditions, prior sale, lease or financing, or withdrawal without notice. We include projections, opinions, assumptions or estimates for example only, and they may not represent current or future performance of the property. You and your tax and legal advisors should conduct your own investigation of the property and transaction.

875 Berkshire Boulevard Suite 102
Wyomissing, PA 19610
610 779 1400 tel
naikeystone.com



| Population | 1 Mile | 5 Miles | 10 Miles |
|-----------------------------|----------|-----------|-----------|
| Total Population | 424 | 10,089 | 60,252 |
| Average age | 41.0 | 40.0 | 41.2 |
| Average age (Male) | 38.8 | 38.9 | 40.2 |
| Average age (Female) | 43.1 | 41.3 | 42.0 |
| Households & Income | 1 Mile | 5 Miles | 10 Miles |
| Total households | 153 | 3,699 | 23,035 |
| # of persons per HH | 2.8 | 2.7 | 2.6 |
| Average HH income | \$64,286 | \$66,574 | \$65,666 |
| Average house value | | \$223,726 | \$210,208 |

* Demographic data derived from 2010 US Census