

For Lease

Office Building

\$20.50/RSF, Modified Gross



733 Volvo Parkway

733 Volvo Parkway
Chesapeake, Virginia 23320

Property Highlights

- Medical Office Building
- Three Story, +/- 24,122 RSF Total
- Prominent Pylon Signage on Volvo
- Second Floor Suite - Suite 210 - 2,539 RSF
- Second Floor Suite - Suite 200 - 5,610 RSF
- Entire Second Floor - +/- 8,149 RSF (Available 2nd Qtr 2021)
- Ample parking in office park

Property Description

Located in the heart of Chesapeake in the Greenbrier District. Easy access via Greenbrier Parkway or Battlefield Blvd. Less than 2 miles from I-64. Central to all of Hampton Roads and situated among the Greenbrier Business and Retail areas.

PROPERTY SUMMARY

Available RSF	2,539 - 8,149 RSF
Lease Rate	\$20.50/RSF, MG
Lot Size	3.78 Acres
Building Size	24,122 RSF

DEMOGRAPHICS

Stats	Population	Avg. HH Income
1 Mile	6,298	\$78,786
3 Miles	69,916	\$70,138
5 Miles	192,769	\$71,298

For more information

Patrick L. Reynolds, CCIM

O: 757 216 8438
patrickreynolds@naidominion.com

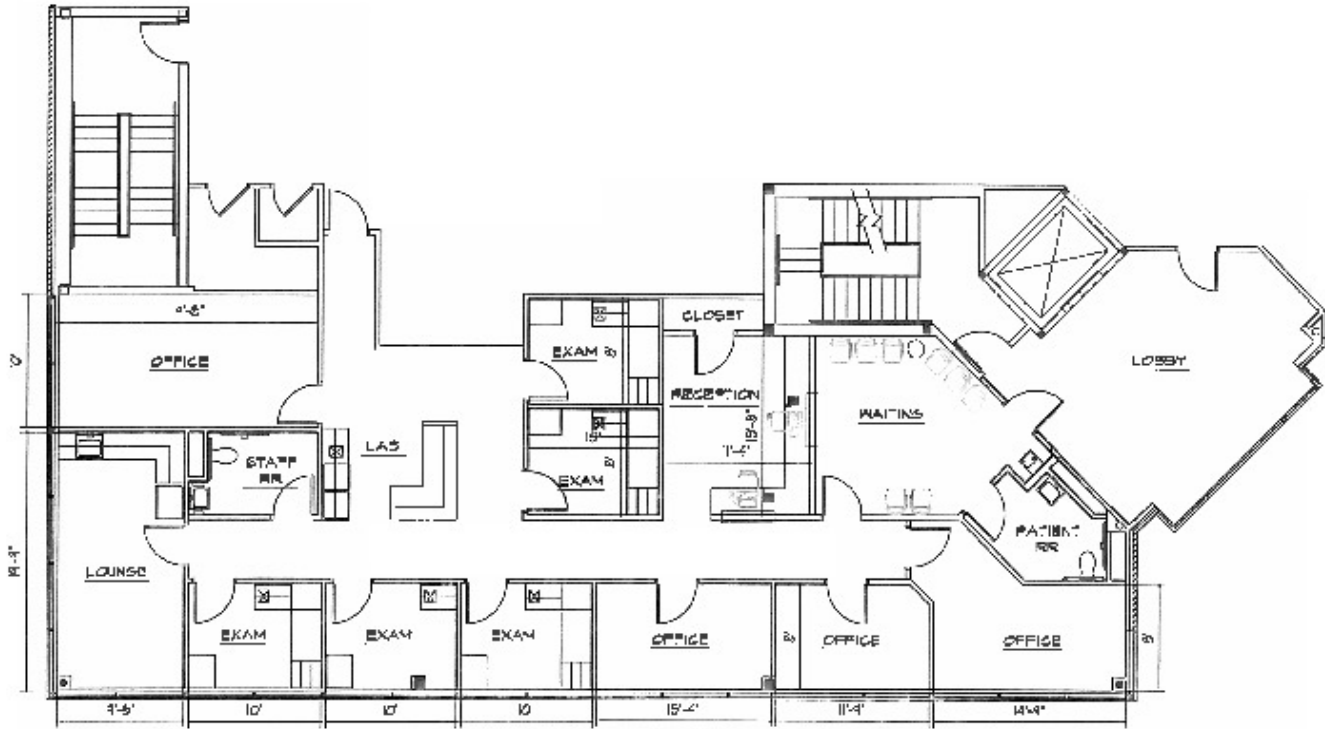
Matt Wilbricht

O: 757 216 8438
mattwilbricht@naidominion.com

Jon Elliott

O: 757 270 2788
jonelliott@naidominion.com

Available Suites



FRANCIS & REEVE
TRACELANDS CENTER

VACANT SUITE

SECOND FLOOR PLAN
133 VOLVO PARKWAY
CHESAPEAKE, VIRGINIA

JANUARY 11, 2016
S. REEVE

2,539 RSF

Second Floor Suite 210- 2,539 RSF

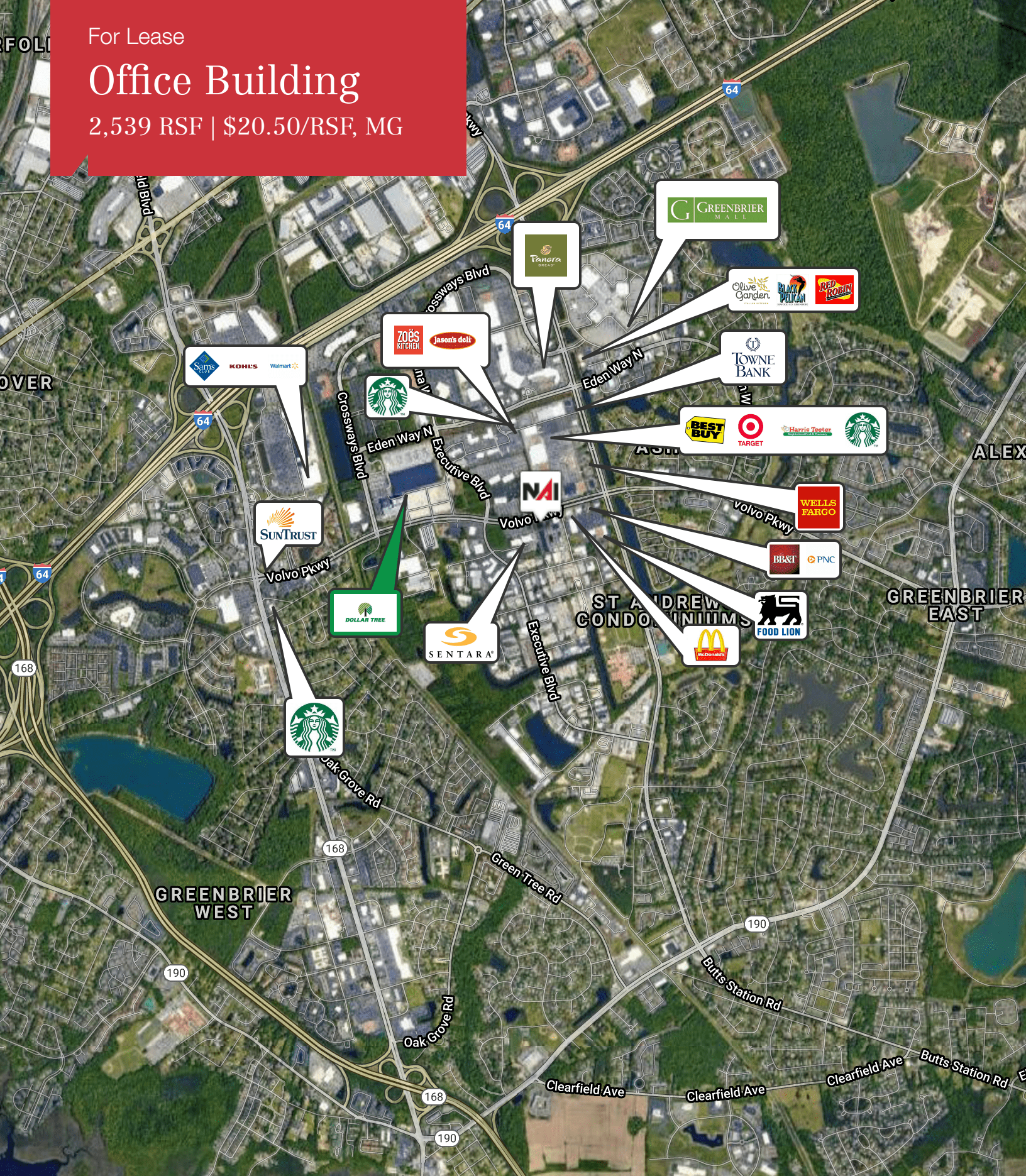
Location Maps



For Lease

Office Building

2,539 RSF | \$20.50/RSF, MG



Map data ©2021 Google Imagery ©2021, City of Virginia Beach, Commonwealth of Virginia, Landsat / Copernicus, Maxar Technologies, U.S. Geological Survey, USDA Farm Service Agency