

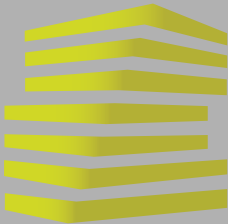
# HIGH RIDGE CROSSING

HIGH RIDGE, MO



**LOCATION.**  
commercial real estate

TAKE A  
**360°**  
VIRTUAL TOUR



# HIGH RIDGE CROSSING

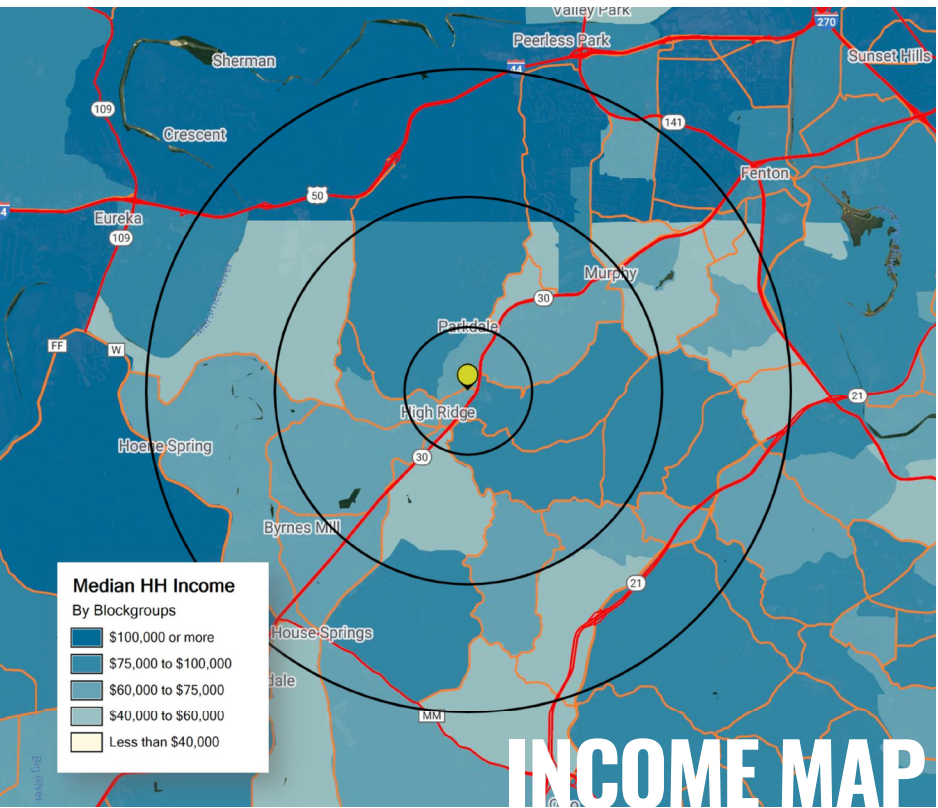
## NEIGHBORHOOD VIBE

BEN WEIS

SCOTT BITNEY

314.818.1563 (OFFICE)  
314.629.6532 (MOBILE)  
Ben@LocationCRE.com

314.818.1550 (OFFICE)  
314.276.4673 (MOBILE)  
Scott@LocationCRE.com



High Ridge Missouri is located in Jefferson County and is a Census-Designated Place. It is about 40 minutes southwest of Downtown St Louis. Important roads for High Ridge are Highway 30, Antire Road, State Highway PP, High Ridge Blvd and others.

High Ridge is unincorporated, despite several attempts from the 1960s forward to form a city. Northeast Jefferson County, including High Ridge, has been cited by University of Missouri geography professor emeritus Walter F. Schroeder as a "grand experiment" in governance by taxing districts, in which functions normally performed by a municipality (fire, sewer, ambulance, and water) are instead controlled by elected district trustees, with other functions (police, planning and zoning, roads, real estate matters) left to county-wide ordinance, with the tradeoff being lower taxes than an incorporated region. This "experiment" was not planned, but is a result of the reluctance of long-time residents in the face of urbanization, and the antipathy of post-WWII and post-Korea settlers against the large urban governments from which most came.

Residents of High Ridge are served by the Northwest School District. The district has 6 elementary schools, Woodridge Middle and Valley Middle Schools and Northwest High School.



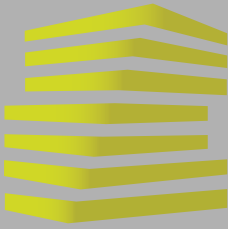
2020 DEMOGRAPHICS

	POPULATION	HOUSEHOLDS	AVG HH INCOME
<b>1 MILE</b>	4,743	1,947	\$81,830
<b>3 MILES</b>	23,365	9,321	\$80,666
<b>5 MILES</b>	63,405	25,020	\$88,417



www.LocationCRE.com

THE INFORMATION IN THIS FLYER HAS BEEN OBTAINED FROM SOURCES BELIEVED RELIABLE. WHILE WE DO NOT DOUBT ITS ACCURACY, WE HAVE NOT VERIFIED IT AND MAKE NO GUARANTEE ABOUT IT. IT IS YOUR RESPONSIBILITY TO INDEPENDENTLY CONFIRM ITS ACCURACY AND COMPLETENESS. ANY PROJECTIONS, OPINIONS, ASSUMPTIONS OR ESTIMATES USED ARE FOR EXAMPLE ONLY AND DO NOT REPRESENT THE CURRENT OR FUTURE PERFORMANCE OF THE PROPERTY. THE VALUE OF THIS TRANSACTION TO YOU DEPENDS ON TAX AND OTHER FACTORS WHICH SHOULD BE EVALUATED BY YOUR TAX, FINANCIAL AND LEGAL ADVISORS. YOU AND YOUR ADVISORS SHOULD CONDUCT A CAREFUL, INDEPENDENT INVESTIGATION OF THE PROPERTY TO DETERMINE TO YOUR SATISFACTION THE SUITABILITY OF THE PROPERTY FOR YOUR NEEDS.



# HIGH RIDGE CROSSING

## SITE PLAN

BEN WEIS

314.818.1563 (OFFICE)  
314.629.6532 (MOBILE)  
Ben@LocationCRE.com

SCOTT BITNEY



314.818.1550 (OFFICE)  
314.276.4673 (MOBILE)  
Scott@LocationCRE.com

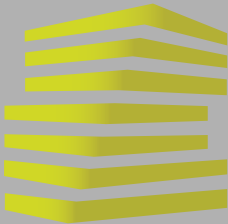


- 30,000 SF +/- ADJACENT TO NEW ALDI GROCERY STORE
- MULTIPLE SMALL SHOP BAYS AVAILABLE
- GREAT PYLON SIGNAGE
- LOCATED ACROSS THE STREET FROM WALMART SUPERCENTER
- OVER 36,000 VPD ON HIGHWAY 30
- CALL BROKER FOR PRICING

### 360 VIRTUAL TOURS

AVAILABLE SUITES

-  SUITE 1005
-  SUITE 1007
-  SUITE 1011
-  SUITE 1017



# HIGH RIDGE CROSSING

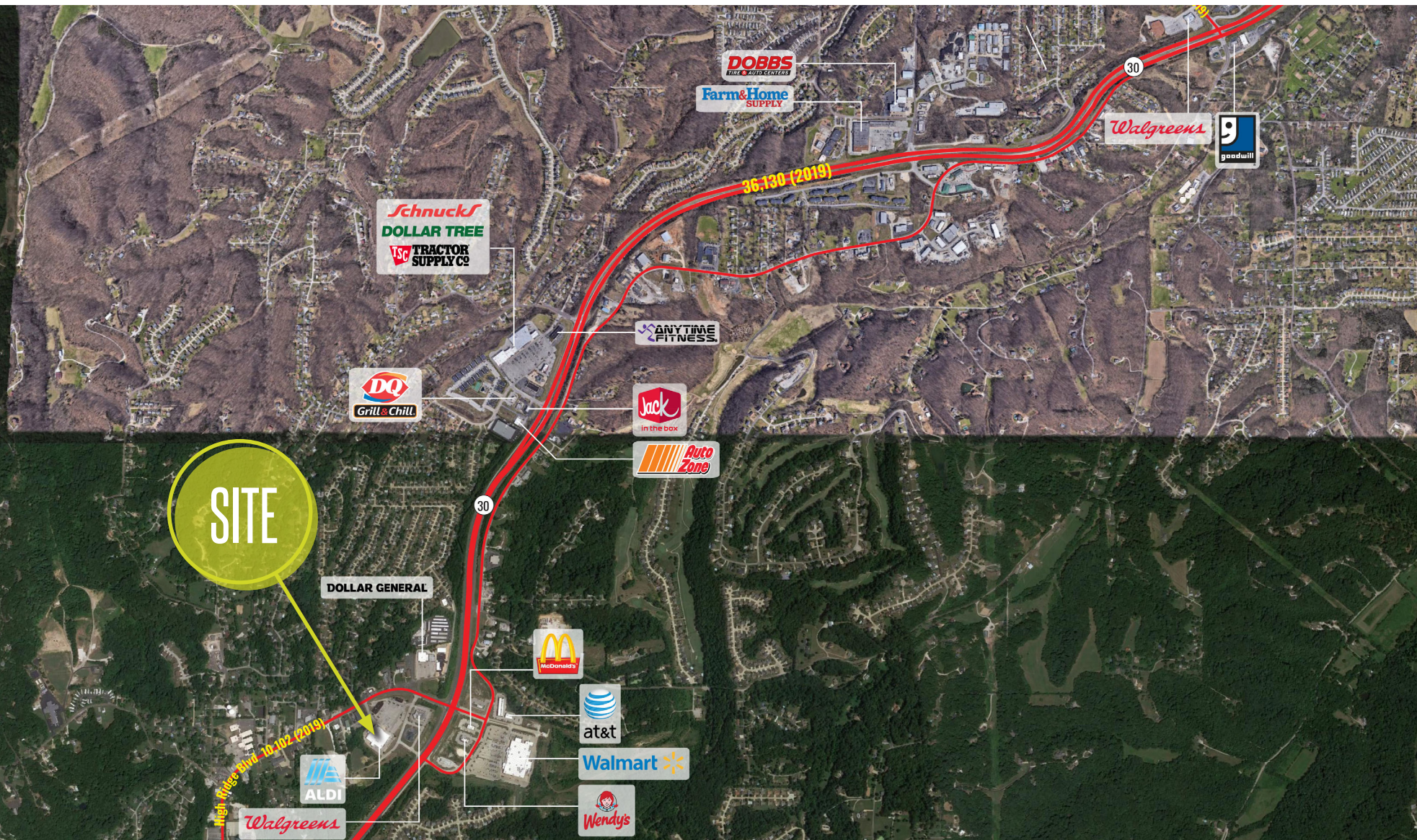
## MARKET AERIAL

BEN WEIS

SCOTT BITNEY

314.818.1563 (OFFICE)  
314.629.6532 (MOBILE)  
Ben@LocationCRE.com

314.818.1550 (OFFICE)  
314.276.4673 (MOBILE)  
Scott@LocationCRE.com



**LOCATION.**  
commercial real estate



[www.LocationCRE.com](http://www.LocationCRE.com)

THE INFORMATION IN THIS FLYER HAS BEEN OBTAINED FROM SOURCES BELIEVED RELIABLE. WHILE WE DO NOT DOUBT ITS ACCURACY, WE HAVE NOT VERIFIED IT AND MAKE NO GUARANTEE ABOUT IT. IT IS YOUR RESPONSIBILITY TO INDEPENDENTLY CONFIRM ITS ACCURACY AND COMPLETENESS. ANY PROJECTIONS, OPINIONS, ASSUMPTIONS OR ESTIMATES USED ARE FOR EXAMPLE ONLY AND DO NOT REPRESENT THE CURRENT OR FUTURE PERFORMANCE OF THE PROPERTY. THE VALUE OF THIS TRANSACTION TO YOU DEPENDS ON TAX AND OTHER FACTORS WHICH SHOULD BE EVALUATED BY YOUR TAX, FINANCIAL AND LEGAL ADVISORS. YOU AND YOUR ADVISORS SHOULD CONDUCT A CAREFUL, INDEPENDENT INVESTIGATION OF THE PROPERTY TO DETERMINE TO YOUR SATISFACTION THE SUITABILITY OF THE PROPERTY FOR YOUR NEEDS.