



FOR LEASE - 6,100 SF
9840 West Broad Street | Richmond, VA 23060

[MORE INFORMATION](#)

NAIDominion

7110 Forest Ave, Suite 103 | Richmond, VA 23226 | www.naidominion.com

Jeff Doxey, CCIM
804.363.0332

jeffdoxey@naidominion.com

FOR LEASE

9840 West Broad Street

Highlights

- Highly visible outparcel building, ±6,100 SF available
- NEC W Broad Street & Gaskins Road
- 5 points of ingress/egress
- Signalized intersection
- Zoned B-2
- 3/4 mile to I-64 interchange
- 1 mile to Innsbrook Office Park

DEMOGRAPHICS	5 MINUTES	10 MINUTES	15 MINUTES
Population	27,204	144,187	261,010
Median HH Income	\$68,276	\$74,046	\$73,946
Average HH Income	\$86,844	\$96,722	\$102,842
Daytime Employees	23,127	100,524	172,010
TRAFFIC COUNT			
W Broad Street		35,000 VPD	
Gaskins Road		40,000 VPD	
I-64		84,000 VPD	

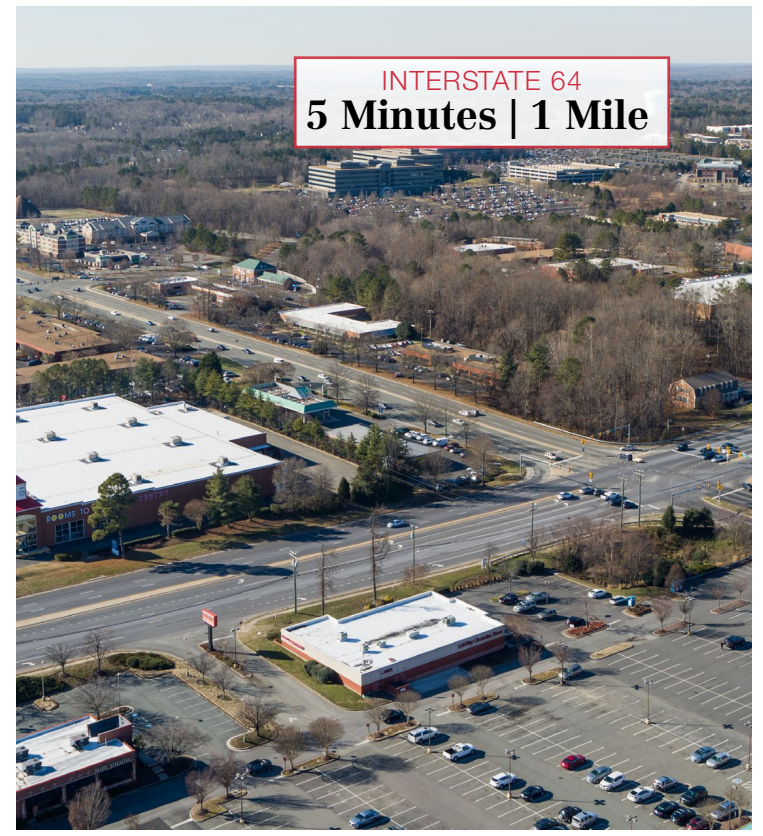


7110 Forest Ave, Suite 103 | Richmond, VA 23226 | www.naidominion.com

Jeff Doxey, CCIM
804.363.0332
jeffdoxey@naidominion.com

Drive Time

FOR LEASE
9840 West Broad Street



7110 Forest Ave, Suite 103 | Richmond, VA 23226 | www.naidominion.com

Jeff Doxey, CCIM
804.363.0332

jeffdoxey@naidominion.com

Aerial - Submarket

FOR LEASE
9840 West Broad Street



Although the information contained herein was provided by sources believed to be reliable, NAI DOMINION makes no representation, expressed or implied, as to its accuracy and said information is subject to errors, omissions or changes.

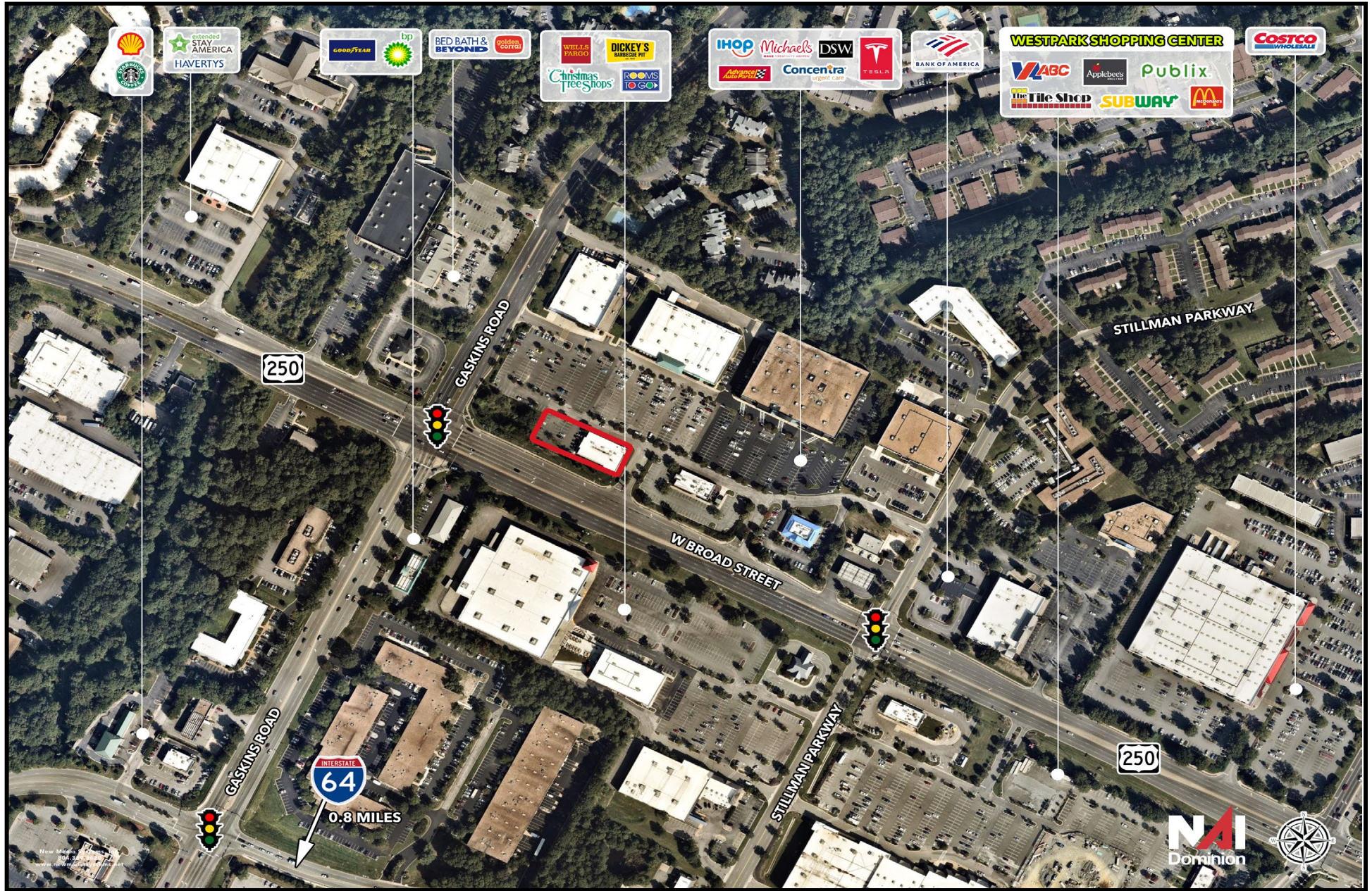


7110 Forest Ave, Suite 103 | Richmond, VA 23226 | www.naidominion.com

Jeff Doxey, CCIM
804.363.0332
jeffdoxey@naidominion.com

Aerial - Site

FOR LEASE
9840 West Broad Street



NAIDominion

7110 Forest Ave, Suite 103 | Richmond, VA 23226 | www.naidominion.com

Jeff Doxey, CCIM
804.363.0332
jeffdoxey@naidominion.com