



1301 Eisenhower Boulevard Harrisburg, PA 17111 Dauphin County, Swatara Township

Located on Eisenhower Boulevard in Harrisburg, PA. Property is located in the retail, commercial and industrial sector of Harrisburg, just one mile from the Pennsylvania Turnpike/I-76.

Total Acres Available	1.77 AC
Topography	Level
Date Available	Immediately
Price	\$265,500

Zoning

ML-Light Industrial

Demographics

Radii	Population	Households	Household Income
1	1,847	848	\$80,112
3	37,424	15,167	\$75,360
5	142,574	59,202	\$74,552

Traffic Count: Average daily traffic on Eisenhower Boulevard - 16,000

Land Information

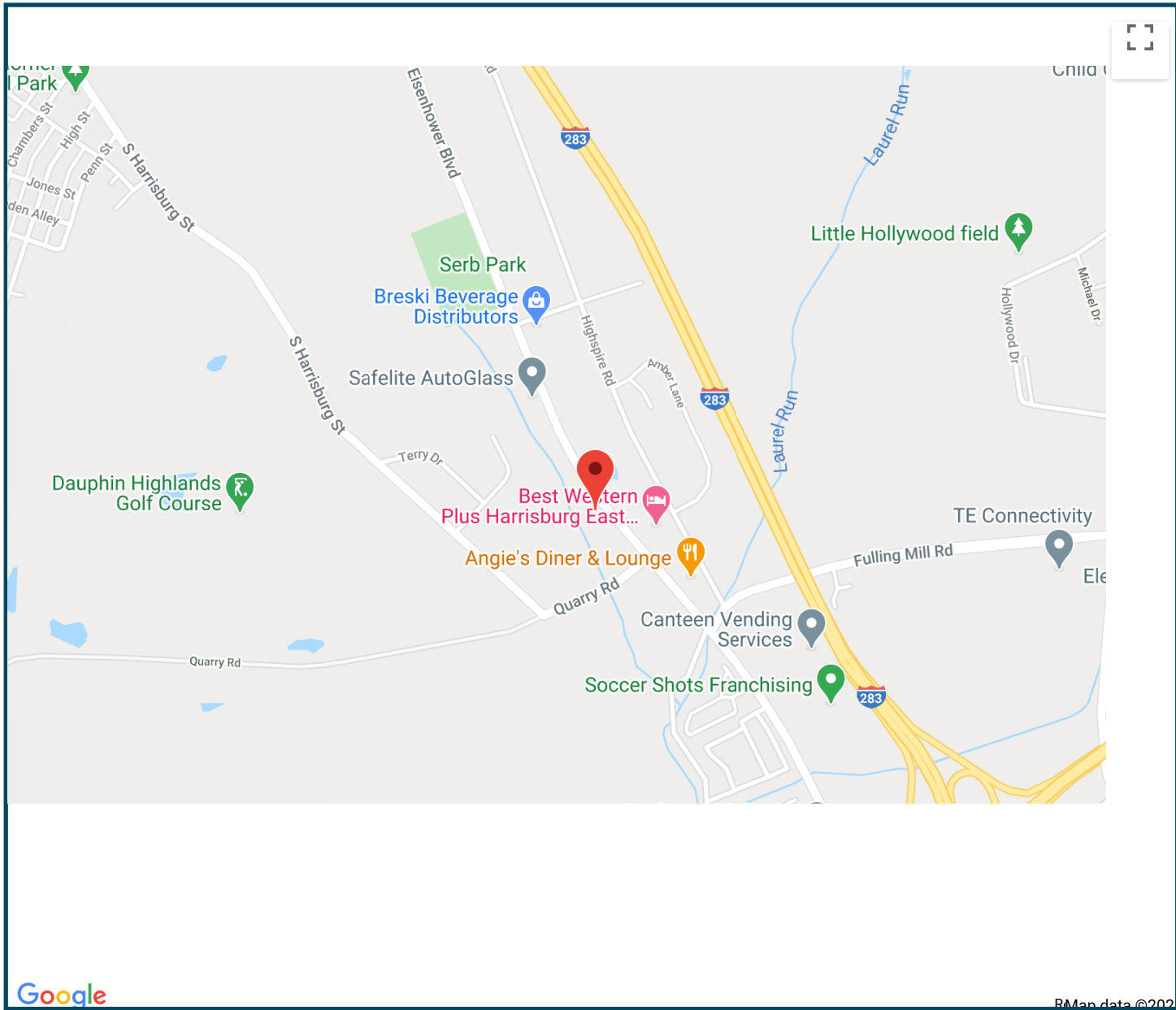
Acres	1.77 AC
Total Acres Available	1.77 AC
Land SF	77,101
Fencing	None
Frontage	Approx. 285' on Eisenhower Boulevard
Topography	Level
Tax Parcel Number	63-062-089
Max Contiguous AC	6.23 AC

Utilities

Water	None to site
Sewer	None to site

Sales Information

For Sale	Yes
For Lease	No
Price	\$265,500
Price Notes	\$150,000/AC
Real Estate Tax	\$5,469.27
Date Available	Immediately







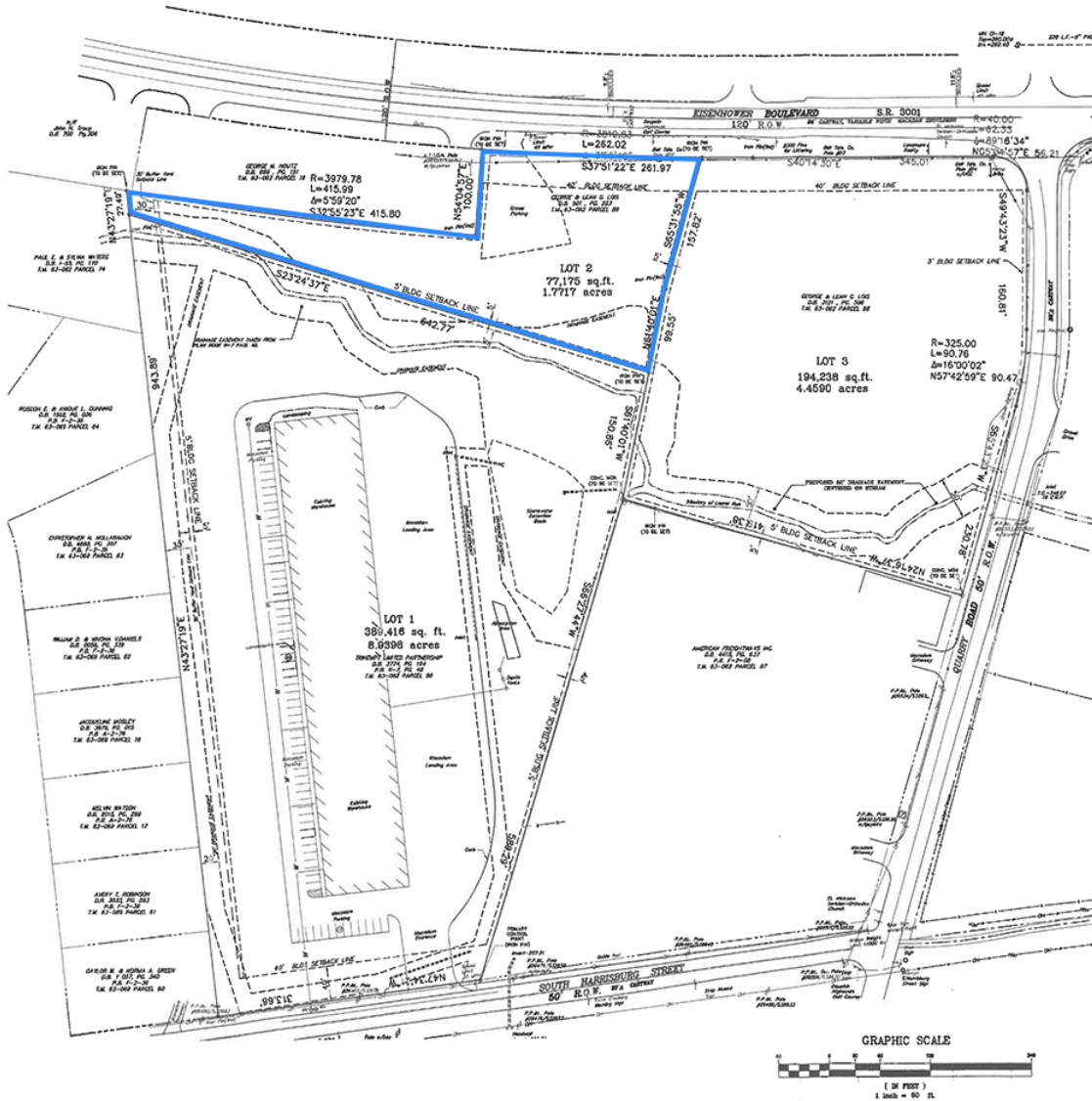
QUARRY ROAD

1.77 AC

4.46 AC

EISENHOWER BLVD





Information concerning this offering is from sources deemed reliable, but no warranty is made as to the accuracy thereof, and it is submitted subject to errors, omissions, change of price or other conditions, prior sale or lease, or withdrawal without notice. All sizes approximate.

NAI CIR | 1015 Mumma Road, Lemoyne, PA 17043 | PA Licence #RB024320A