

5717 Midlothian Turnpike

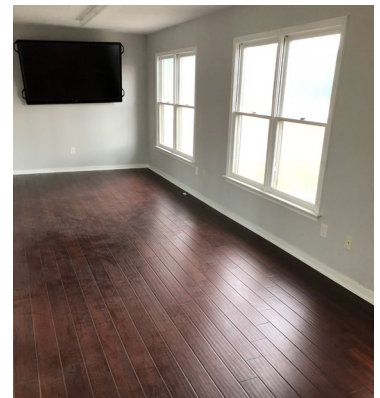
OFFICE FOR LEASE

Hull Street Corridor | Richmond, Virginia 23225



Highlights

- 3,164 SF available
- Midlothian Turnpike frontage
- Common area and break room
- Minutes away from Manchester
- Ramp access
- Shared conference room
- Front porch
- Call agent for pricing



PROPERTY OVERVIEW

Office User opportunity located in Midlothian, Virginia

More Information

Cam Maxey

804.380.7254

cammaxey@naidominion.com

Dean Foster

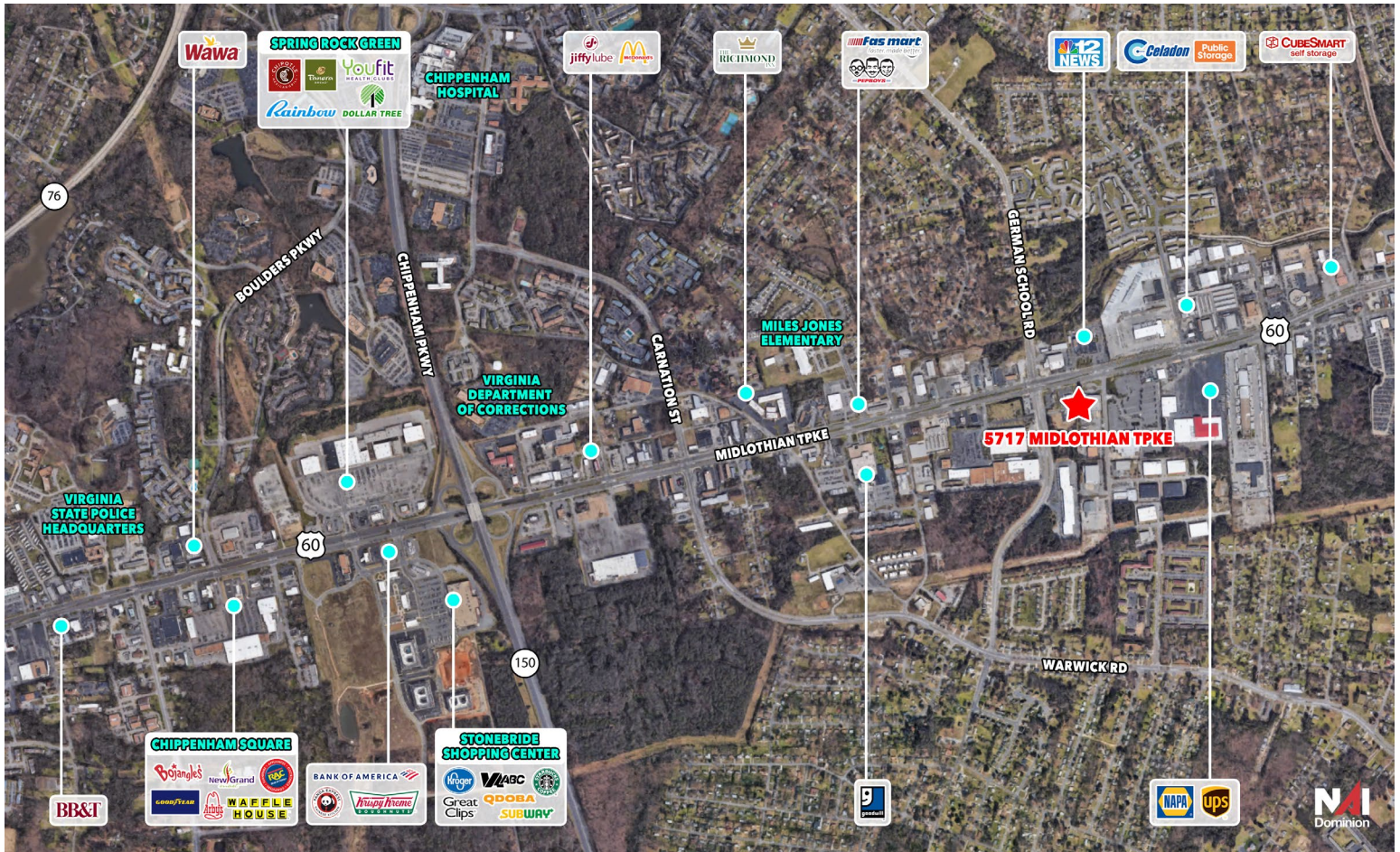
804.310.0741

deanfoster@naidominion.com



For Lease

5717 MIDLOTHIAN TURNPIKE



DEMOGRAPHICS	1 MILE	3 MILE	5 MILE
Population	13,395	82,642	230,535
Pop. Growth 2019-2024	8.09%	5.71%	6.18%
Median HH Income	\$34,357	\$42,831	\$51,100
TRAFFIC COUNTS			
Midlothian Turnpike	23,233		
German School Road	4,376		

MIDLOTHIAN AERIAL MAP

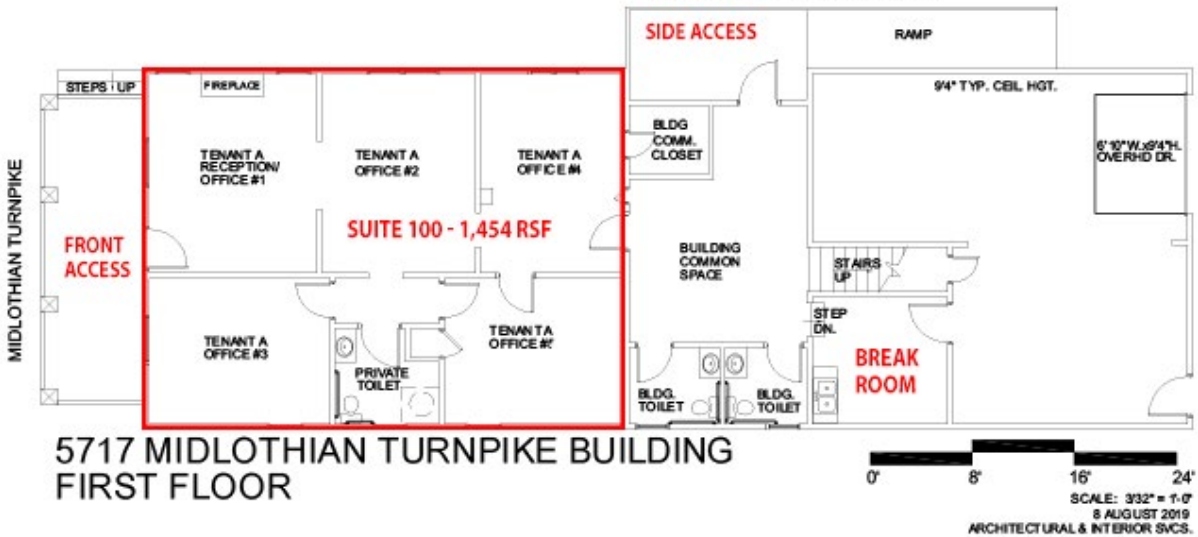
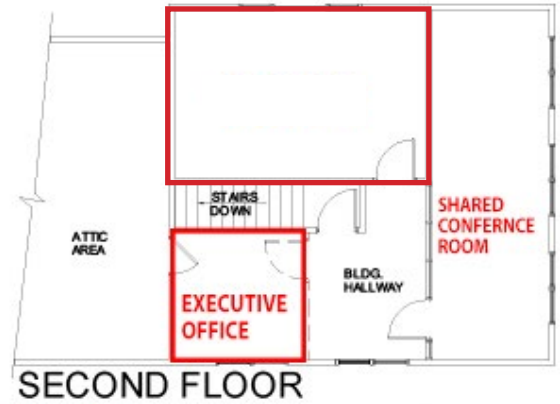
More Information

Cam Maxey
 804.380.7254
cammmaxey@naidominion.com

Dean Foster
 804.310.0741
deanfoster@naidominion.com

For Lease

5717 MIDLOTHIAN TURNPIKE



More Information

Cam Maxey

804.380.7254

cammaxey@naidominion.com

Dean Foster

804.310.0741

deanfoster@naidominion.com



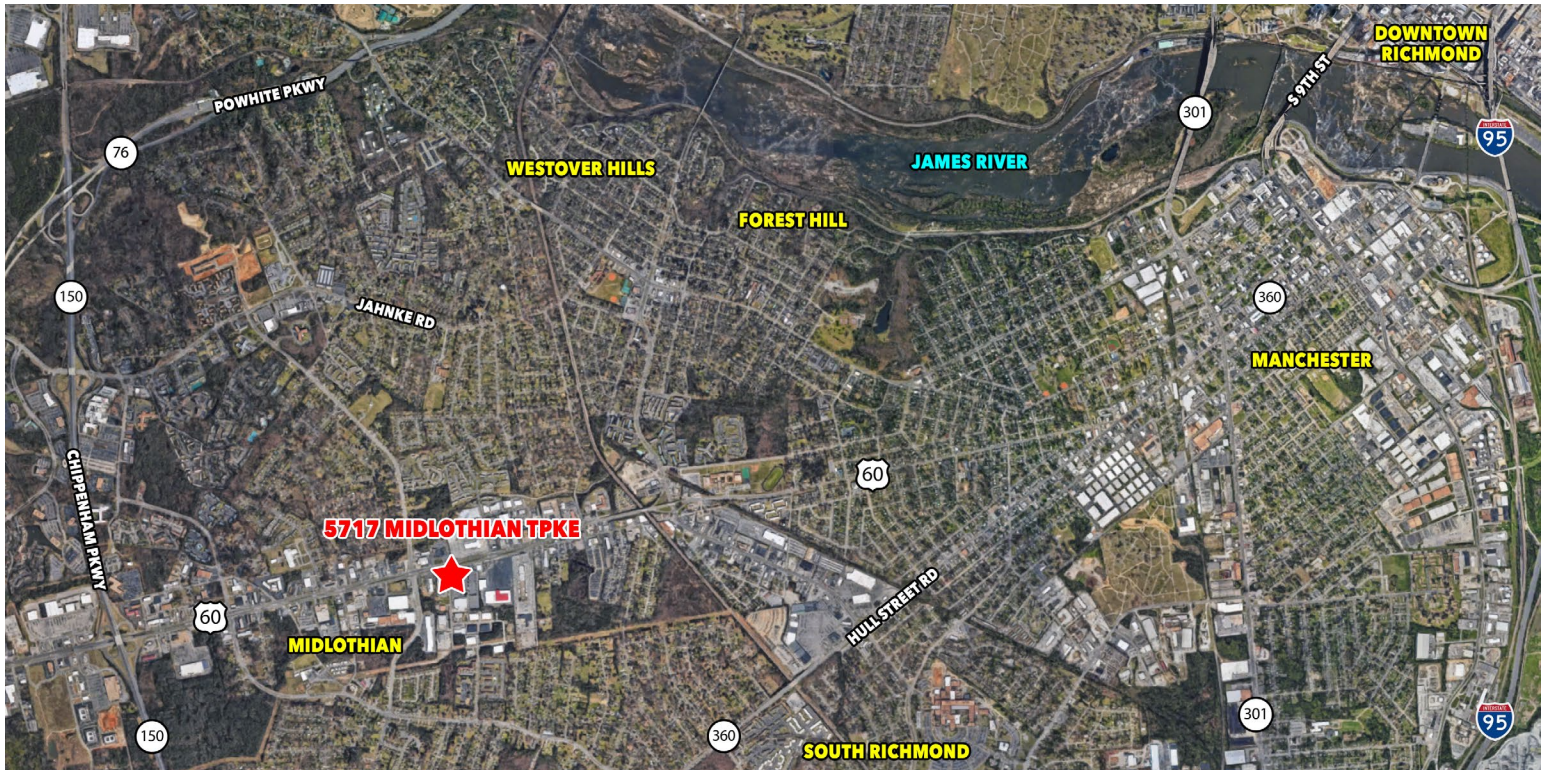
For Lease
**5717
MIDLOTHIAN
TURNPIKE**



More Information

Cam Maxey
804.380.7254
cammaxey@naidominion.com

Dean Foster
804.310.0741
deanfoster@naidominion.com



Although the information contained herein was provided by sources believed to be reliable, NAI DOMINION makes no representation, expressed or implied, as to its accuracy and said information is subject to errors, omissions or changes.