



MEDICAL OFFICE FOR LEASE

2035 Waterside Road | Prince George, VA 23875

Highlights

- **3,843 SF medical office space available**
- Located in Waterside Commons Medical Office Park
- 32 free surface parking spaces (4.68/1,000 SF)
- Asking Rent: \$22/SF NNN
- Zoned B-1, Class B Office

MORE INFORMATION

Cam Maxey

804.380.7254

cammaxey@naidominion.com

Chris Rice

804.513.6162

chrisrice@naidominion.com



3901 Westerre Parkway Suite 240 | Richmond, VA 23233 | 804.346.5000 | www.naidominion.com

Although the information contained herein was provided by sources believed to be reliable, NAI DOMINION makes no representation, expressed or implied, as to its accuracy and said information is subject to errors, omissions or changes.

Nearby Medical Offices



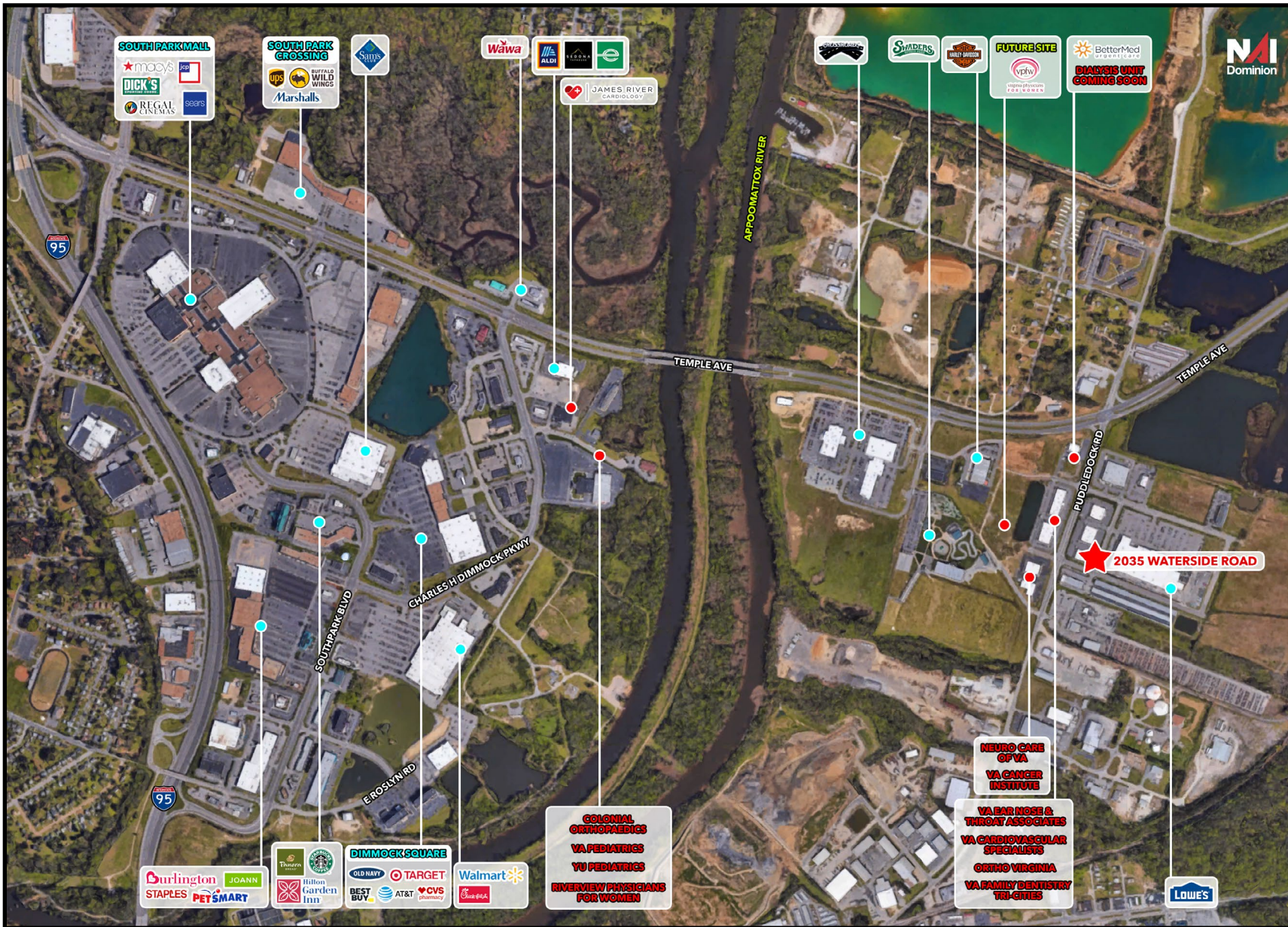
2035 Waterside Road

1. BetterMed Urgent Care
2. Dialysis Unit Coming Soon
3. Virginia Ear Nose & Throat
4. Virginia Cardiovascular Specialists
5. Ortho Virginia
6. Virginia Family Dentistry Tri-Cities
7. Neuro Care of Virginia
8. Virginia Cancer Institute
9. Virginia Eye Institute
10. 7,000 SF AVAILABLE SUMMER 2019
11. Virginia Urology



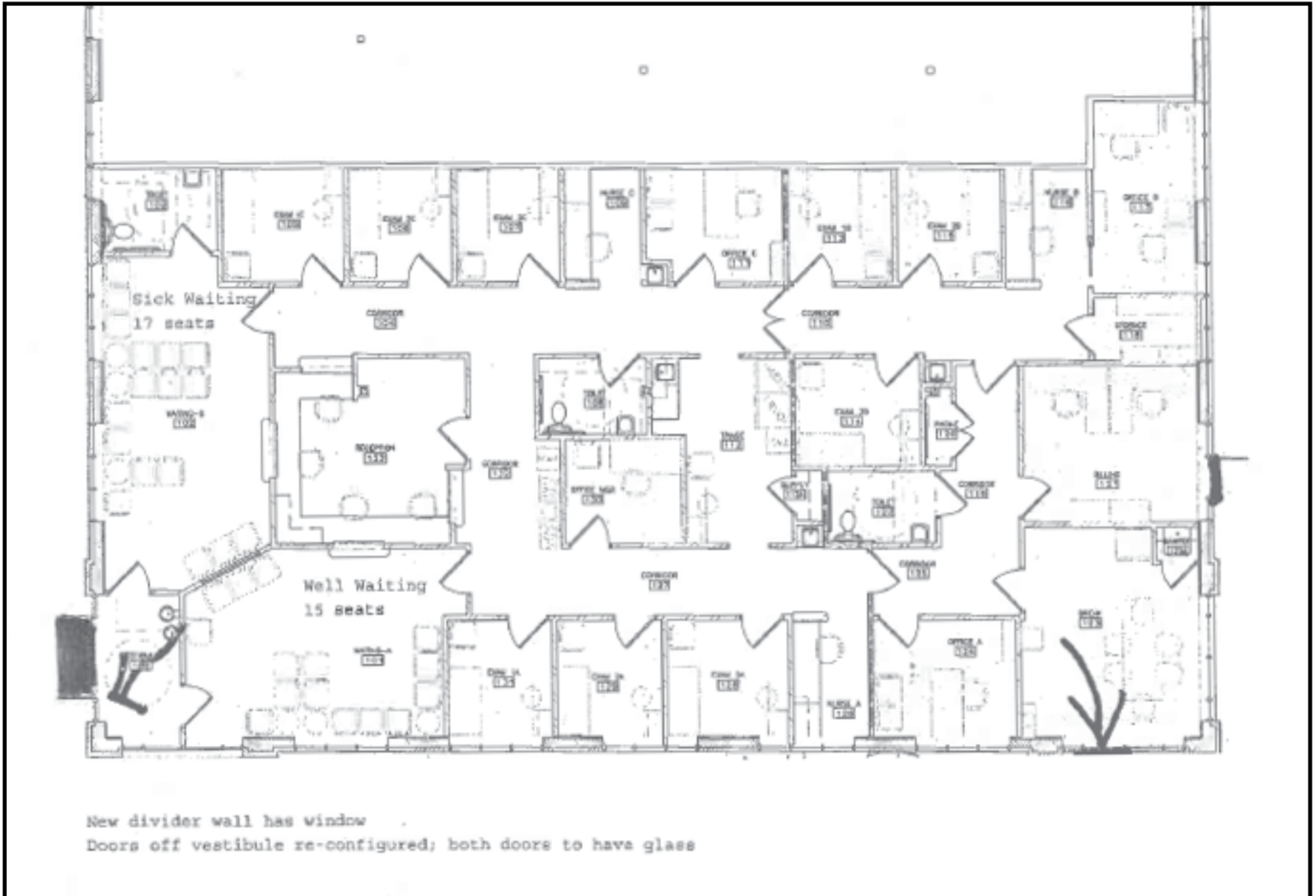
Aerial Map

FOR LEASE
2035 Waterside Road



Floor Plan

FOR LEASE
2035 Waterside Road



Interior Photos

FOR LEASE
2035 Waterside Road

