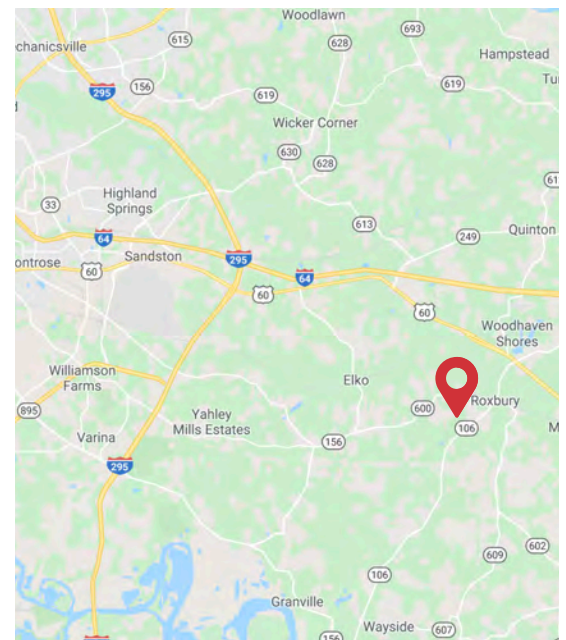




305 Roxbury Industrial Court Charles City, VA

Property Features

- 35,200 SF Distribution Facility
- Available Space: 8,000 SF - 35,200 SF
- 2 story office with reception, 4 private offices, break-room and large second floor training/meeting area with kitchenette
- 4 dock high doors with pit levelers
- 1 10x12 grade door, 1 12x12 grade door and 2 8x10 grade doors
- Wet Sprinkler
- In excess of 5,000 amps/3p

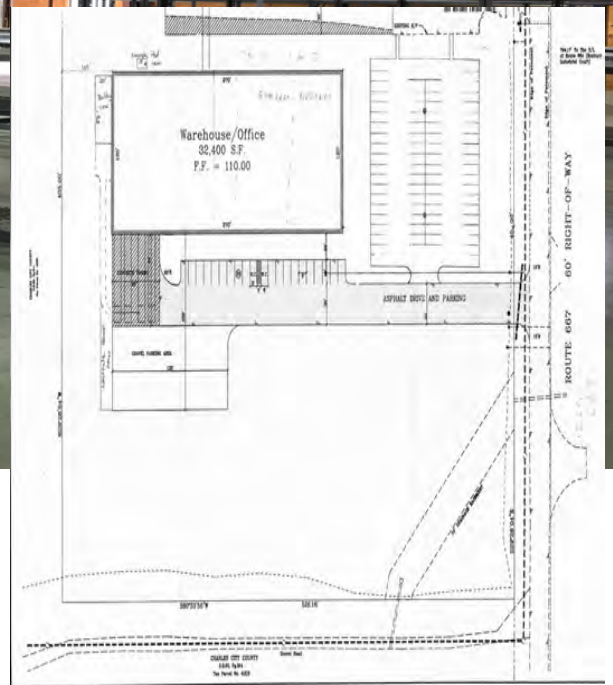


Chris Hopper

+1 804 997 9232
chrishopper@naidominion.com

Cam Maxey

+1 804 380 7254
cammaxey@naidominion.com



Additional Property Features

- Planned Development-Industrial Park
- 100 Parking Spaces
- Yard Space
- 9,000SF of fully conditioned warehouse area
- Available mid-April 2021
- Ceiling Height: 14 FT - 25 FT

Chris Hopper

+1 804 997 9232
chrishopper@naidominion.com

Space Plan

Cam Maxey

+1 804 380 7254
cammmaxey@naidominion.com

