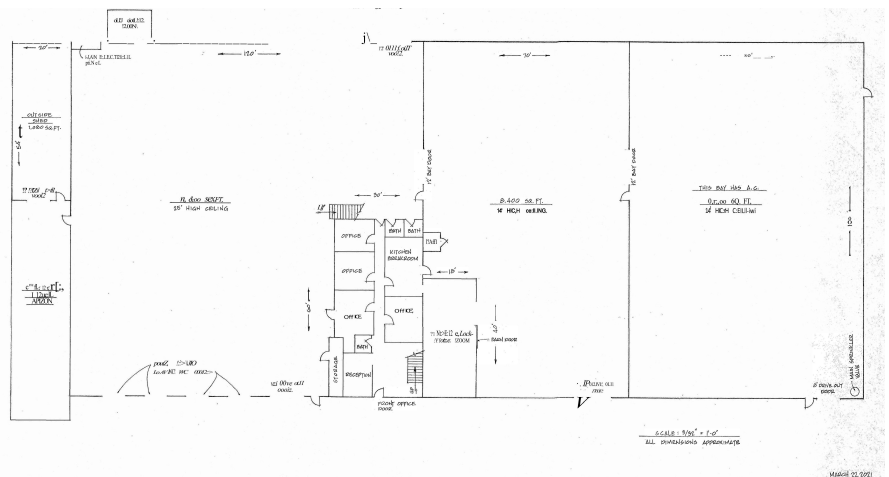


**Additional Property Features**

- Planned Development-Industrial Park
- 100 Parking Spaces
- Yard Space
- 9,000SF of fully conditioned warehouse area
- Available mid-April 2021
- Ceiling Height: 14 FT - 25 FT

**Space Plan**



**Chris Hopper**

+1 804 997 9232  
chrishopper@naidominion.com