

HIGHLAND PARK PLACE

14467 WOODWARD AVENUE, HIGHLAND PARK, MI 48203

DAVID GREENE

248.352.5000

dgreene@firstcommercial.net



OFFERING SUMMARY

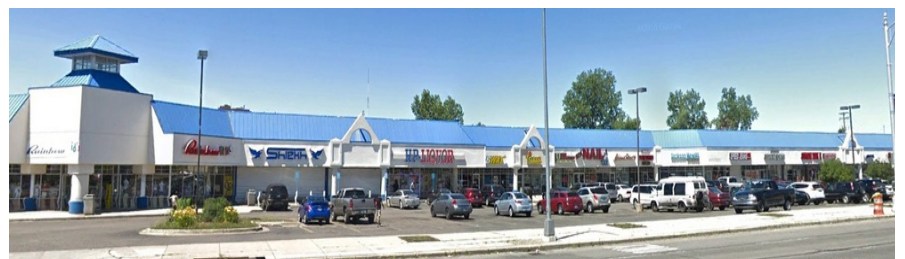
Lease Rate:	\$16.00 SF/yr (NNN)
Number Of Units:	19
Available SF:	N/A
Year Built:	1993
Building Size:	64,518 SF
Zoning:	C3
Parking:	208
Occupancy:	Fully Leased

LOCATION OVERVIEW

Highland Park Place is positioned at the corner of Woodward Avenue & Manchester Street in the main commercial corridor within the community of Highland Park. The center boasts a strong traffic count of 24,000 vehicles per day and consistent foot-traffic from its proximity to local transit lines. A premier location within the center will be available with prime sign location.

DEMOGRAPHICS

	1 MILE	2 MILES	3 MILES
Total Households	5,340	22,306	58,326
Total Population	13,271	60,185	161,245
Average HH Income	\$27,197	\$33,445	\$35,730



FOR LEASE



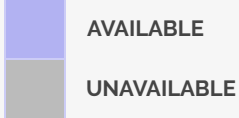
HIGHLAND PARK PLACE

14467 WOODWARD AVENUE, HIGHLAND PARK, MI 48203

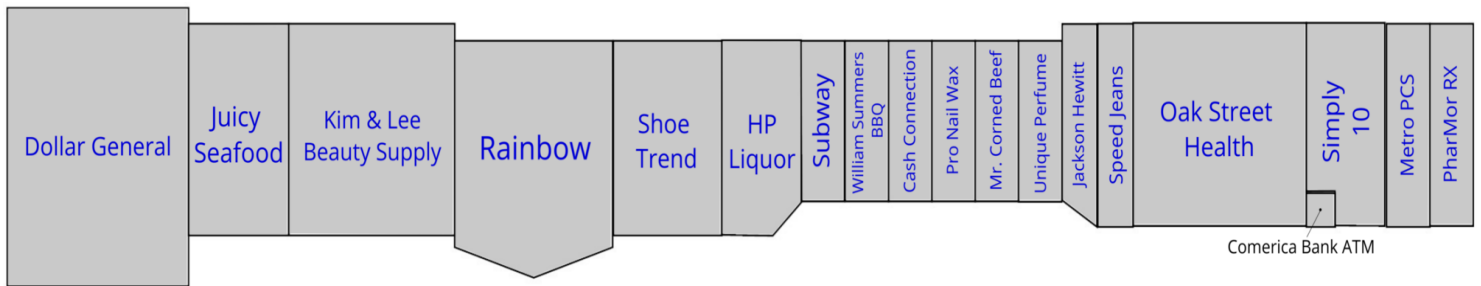
DAVID GREENE

248.352.5000

dgreene@firstcommercial.net



LEASE TYPE		NNN
AVAILABLE SPACE		N/A
LEASE TERM		Negotiable
LEASE RATE		\$16.00 SF/yr



FOR LEASE



HIGHLAND PARK PLACE

14467 WOODWARD AVENUE, HIGHLAND PARK, MI 48203

DAVID GREENE

248.352.5000

dgreene@firstcommercial.net

SUITE	TENANT	SIZE	RATE
14101	Dollar General	10,584 SF	-
14131	Juicy Seafood	3,600 SF	-
14191	Kim & Lee Beauty Supply	7,120 SF	-
14201	Rainbow	7,000 SF	-
14231	Shoe Trend	3,980 SF	-
14301	HP Liquor	2,408 SF	-
14331	Subway	1,200 SF	-
14361	William Summers BBQ	1,300 SF	-
14391	Cash Connection	1,300 SF	-
14401	Pro Nail Wax	1,300 SF	-
14431	Mr. Corned Beef	1,300 SF	-
14451	Unique Perfume & Jewelry	1,330 SF	-
14467	Jackson Hewitt	1,880 SF	-
14501	Speed Jeans & Sportswear	2,000 SF	-
14507	Oak Street Health	9,200 SF	-
14513	Comerica Bank ATM	81 SF	-
14515	Simply 10 #504	5,119 SF	-
14525	Metro PCS	2,000 SF	-
14529	PharMor RX	2,000 SF	-

FOR LEASE

