

For Lease  
**Office**  
2,666 SF



## Salisbury Health Pavilion

659 S Salisbury Blvd Suite 4  
Salisbury, Maryland 21801

### Property Highlights

- +/- 2,666 Square feet of medical office space
- .25 miles from PRMC
- Well thought out floorplan in a successful Health Pavilion

### Property Description

2,666+/- SF turn key medical office in the heart of Salisbury, MD just down the street from PRMC. Formerly Capital Women's Health. Join Aquacare Physical Therapy and ExpressCare of Salisbury at the unique corner of S Salisbury Blvd.

#### OFFERING SUMMARY

<b>Available SF</b>	2,666 SF
<b>Lease Rate</b>	\$17.39 SF/yr (NNN)
<b>Lot Size</b>	0 Acres
<b>Building Size</b>	2,666 SF

#### DEMOGRAPHICS

<b>Stats</b>	<b>Population</b>	<b>Avg. HH Income</b>
<b>1 Mile</b>	12,003	\$50,885
<b>3 Miles</b>	48,797	\$55,691
<b>5 Miles</b>	77,744	\$62,321

For more information

**Christian Phillips**

O: 410 543 5115  
christian@naicoastal.com

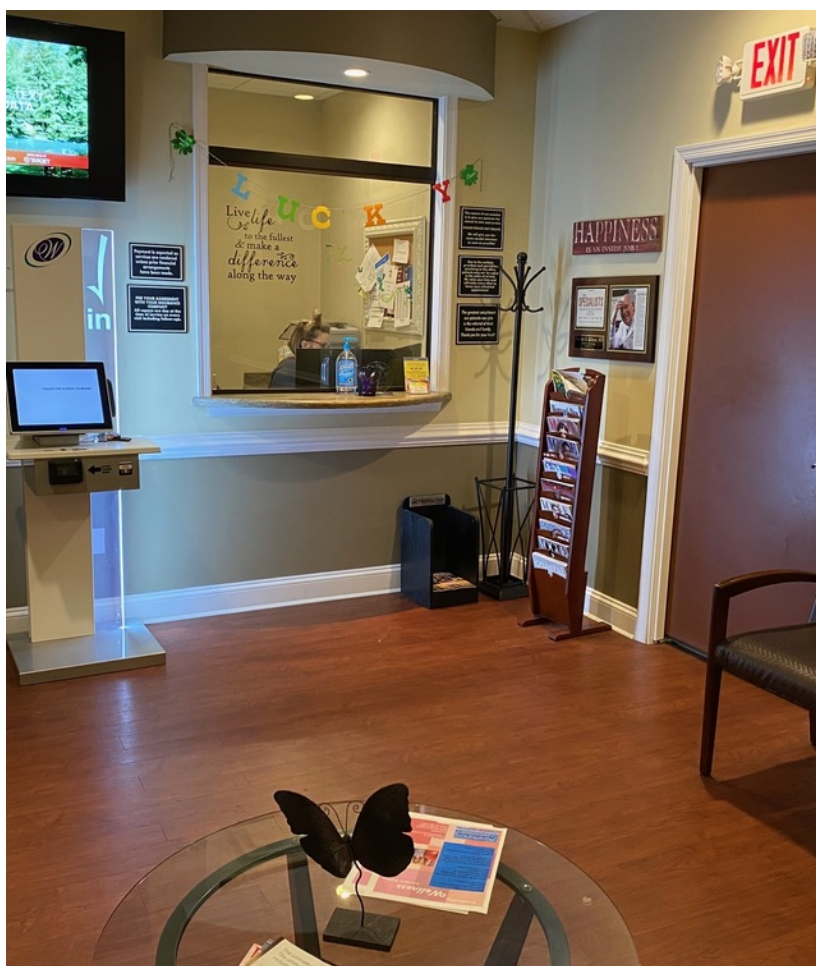
**George Merritt**

O: 410 543 5115  
george@naicoastal.com

For Lease

# Office Building

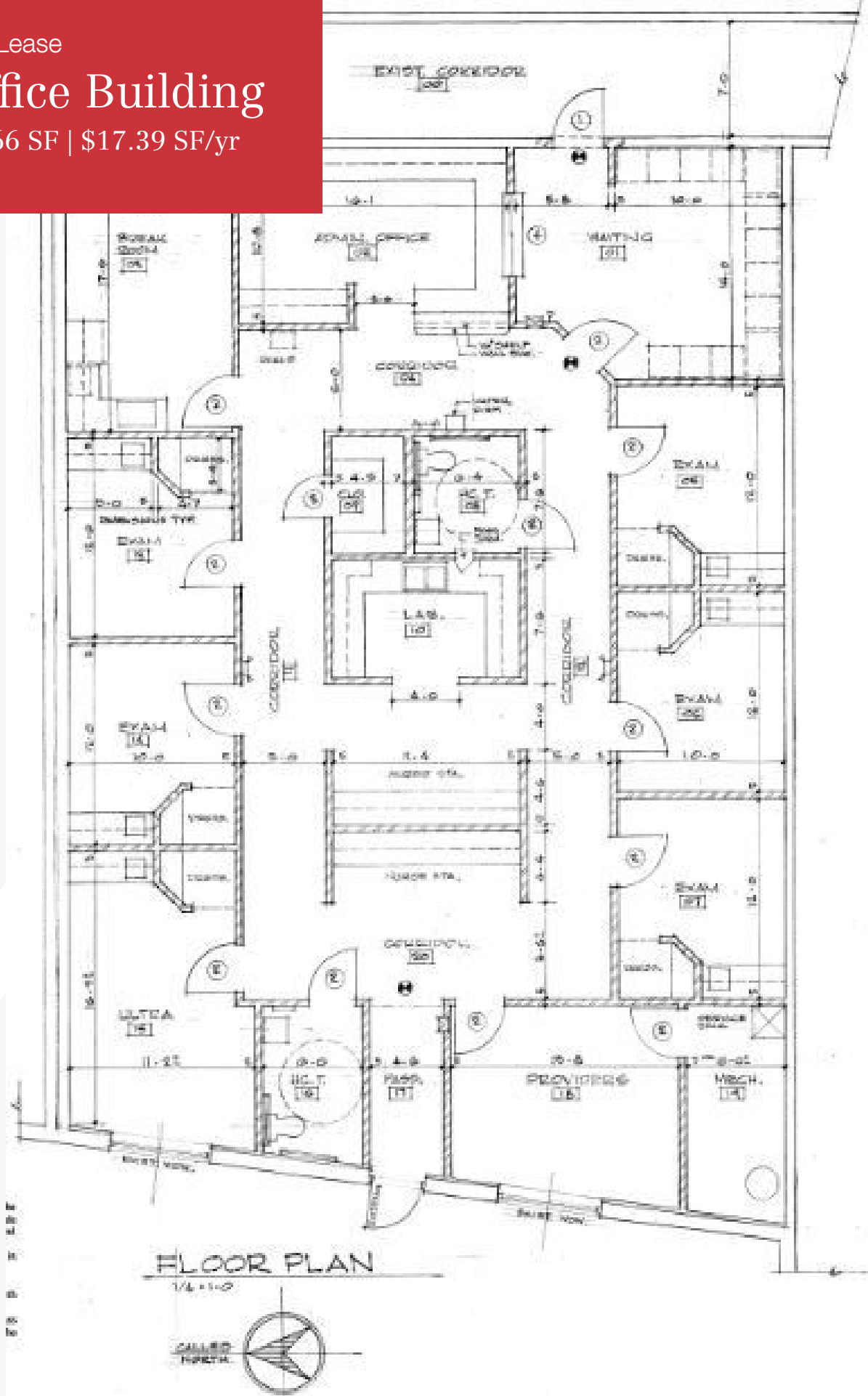
2,666 SF | \$17.39 SF/yr



For Lease

# Office Building

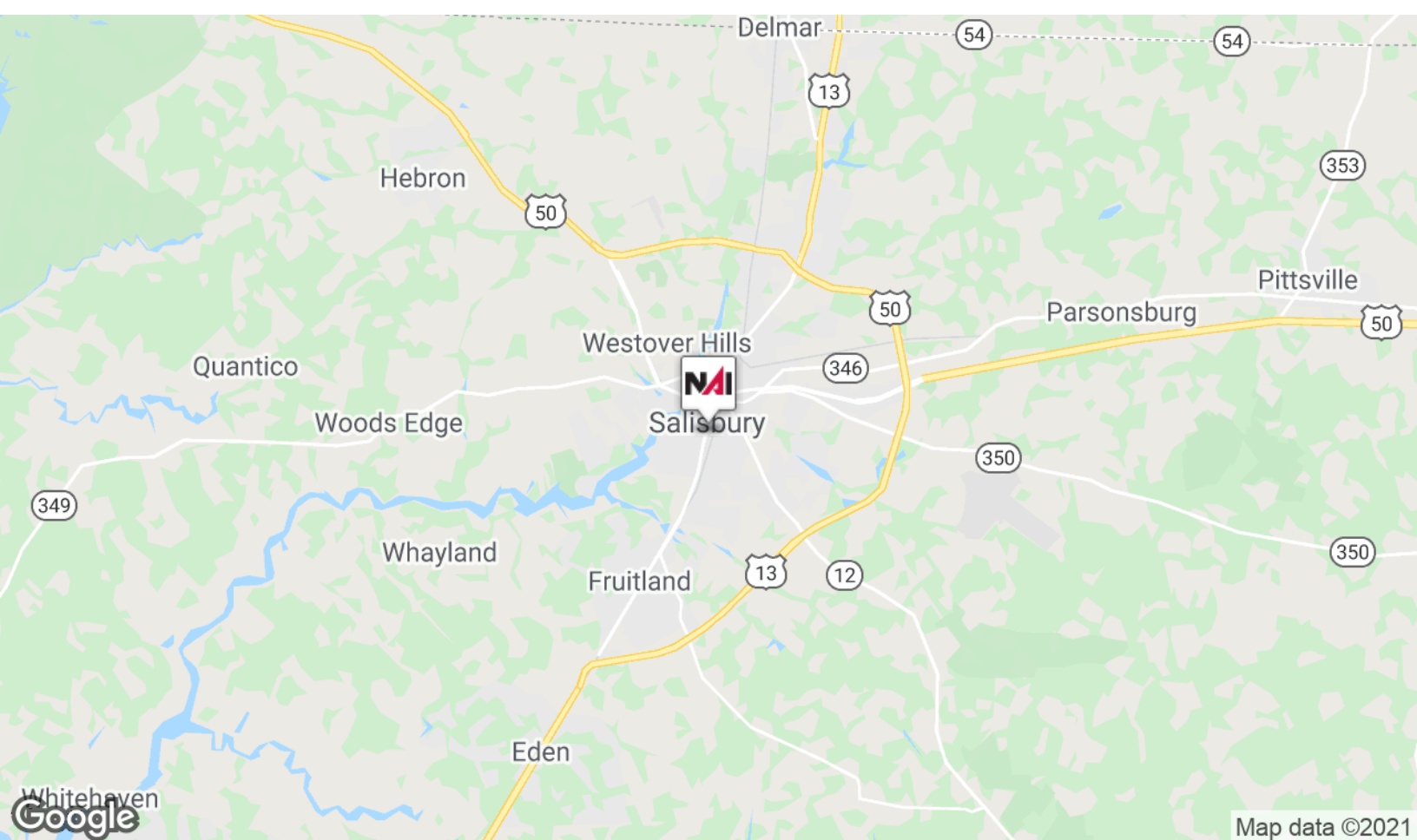
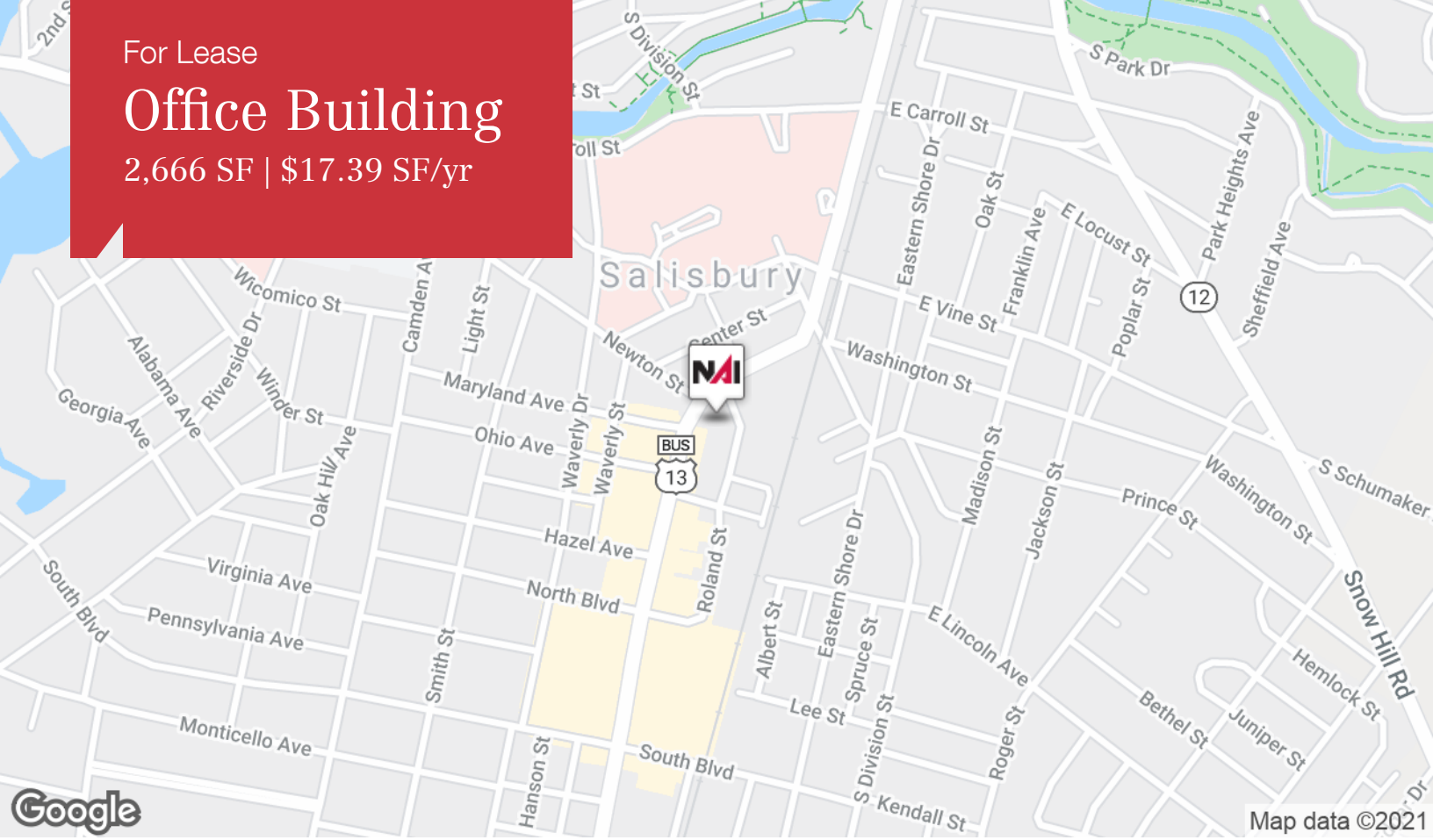
2,666 SF | \$17.39 SF/yr



For Lease

# Office Building

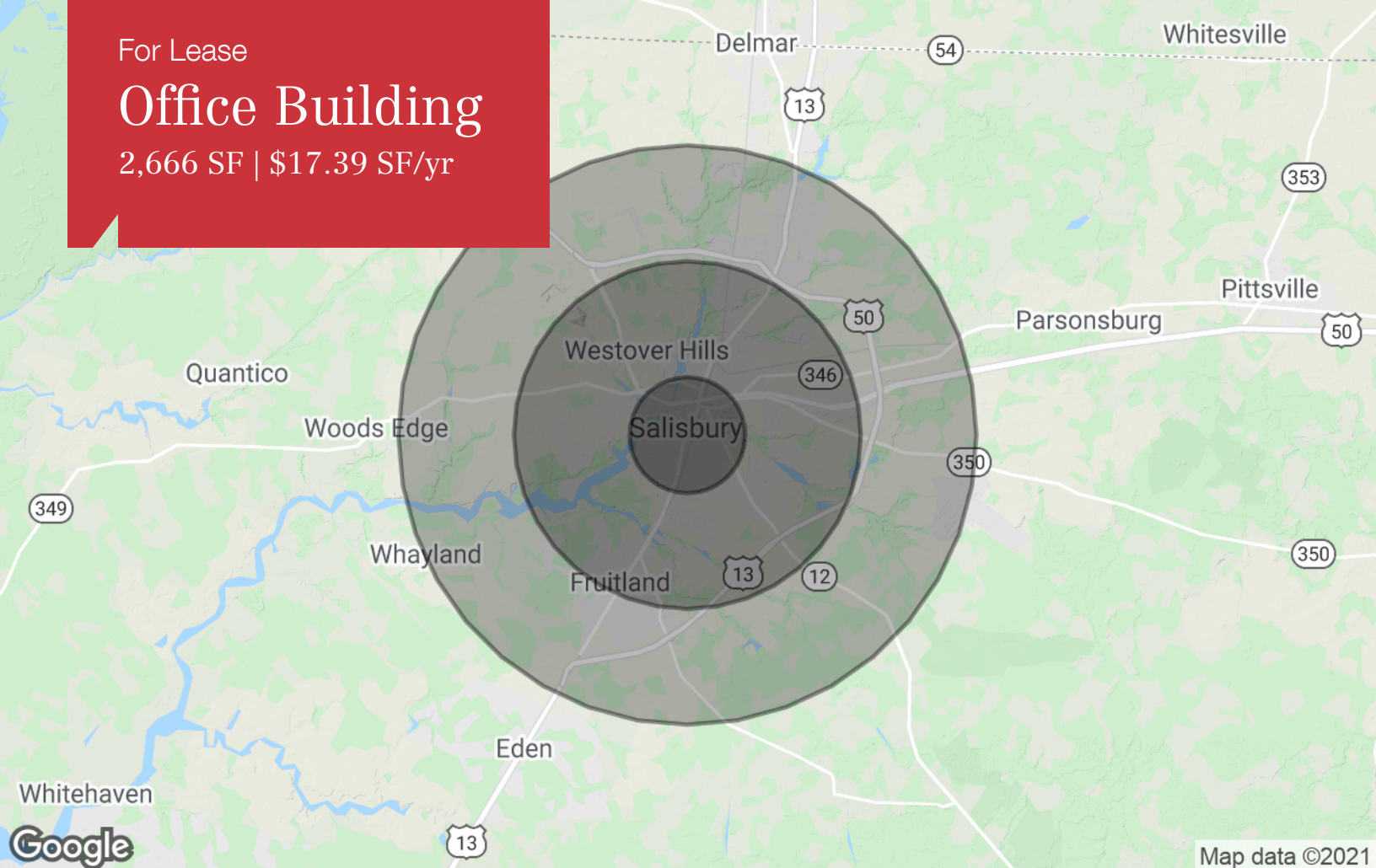
2,666 SF | \$17.39 SF/yr



For Lease

# Office Building

2,666 SF | \$17.39 SF/yr



## Population

	1 Mile	3 Miles	5 Miles
TOTAL POPULATION	12,003	48,797	77,744
MEDIAN AGE	28.5	31.5	33.3
MEDIAN AGE (MALE)	28.7	30.5	31.8
MEDIAN AGE (FEMALE)	28.0	31.9	34.2

## Households & Income

	1 Mile	3 Miles	5 Miles
TOTAL HOUSEHOLDS	4,126	18,147	29,001
# OF PERSONS PER HH	2.9	2.7	2.7
AVERAGE HH INCOME	\$50,885	\$55,691	\$62,321
AVERAGE HOUSE VALUE	\$169,380	\$192,483	\$209,179

## Race

	1 Mile	3 Miles	5 Miles
% WHITE	61.5%	60.4%	63.4%
% BLACK	33.1%	33.5%	30.9%
% ASIAN	1.6%	2.5%	2.7%
% HAWAIIAN	0.1%	0.0%	0.0%
% INDIAN	0.7%	0.6%	0.6%
% OTHER	3.1%	2.9%	2.3%

## Ethnicity

	1 Mile	3 Miles	5 Miles
% HISPANIC	4.8%	5.6%	4.9%

\* Demographic data derived from 2010 US Census