

RIVERS EDGE OFFICE BUILDING

27600 NORTHWESTERN HIGHWAY, SOUTHFIELD, MI 48034

WARREN TERRACE

248.352.5000

WTERRACE@FIRSTCOMMERCIAL.NET



OFFERING SUMMARY

Lease Rate:	\$13.00 SF/yr (Gross)
Number Of Units:	15
Available SF:	500 - 5,891 SF
Year Built:	1986
Building Size:	34,742 SF
Zoning:	C3
Parking:	160
Occupancy:	Immediate

LOCATION OVERVIEW

This owner occupied office building is located in a park-like setting, nestled behind Northwestern Highway and Telegraph Road in bustling Southfield, Michigan.

DEMOGRAPHICS

	1 MILE	3 MILES	5 MILES
Total Households	5,340	27,139	100,881
Total Population	9,539	60,354	229,348
Average HH Income	\$55,436	\$103,150	\$101,878



FOR LEASE



RIVERS EDGE OFFICE BUILDING

27600 NORTHWESTERN HIGHWAY, SOUTHFIELD, MI 48034

WARREN TERRACE

248.352.5000

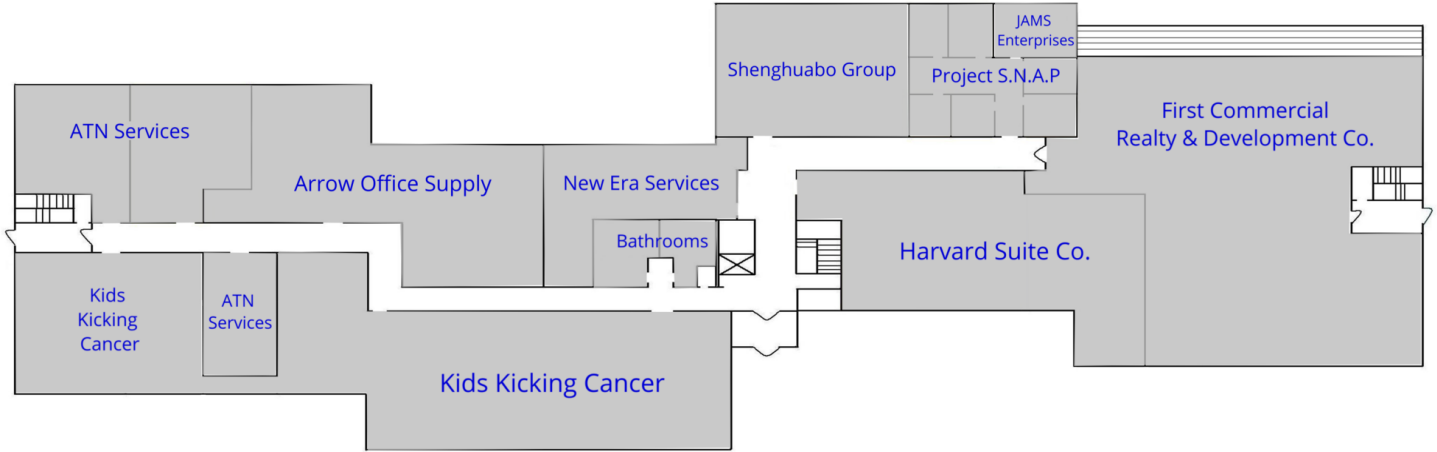
WTERRACE@FIRSTCOMMERCIAL.NET

LEASE TYPE | Gross

AVAILABLE SPACE | 500 - 5,891 SF

LEASE TERM | Negotiable

LEASE RATE | \$13.00 SF/yr



UNAVAILABLE

SUITE	TENANT	SIZE	RATE
260	ATN Services	1,879 SF	-
250	ATN Services	656 SF	-
240	Arrow Office Supply	2,599 SF	-
220	Kids Kicking Cancer	5,459 SF	-
215	Harvard Suite Co.	2,750 SF	-
210	Shenghuabo Group	1,584 SF	-
205	New Era Services	1,053 SF	-
202	JAMS Enterprises	143 SF	-
201	Project S.N.A.P	566 SF	-
200	First Commercial Realty & Development Co.	6,304 SF	-

FOR LEASE



RIVERS EDGE OFFICE BUILDING

27600 NORTHWESTERN HIGHWAY, SOUTHFIELD, MI 48034

WARREN TERRACE

248.352.5000

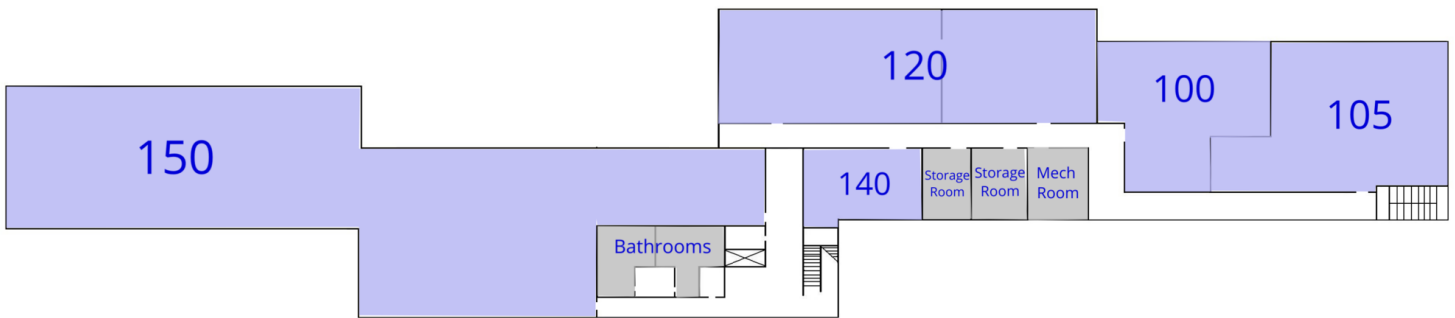
WTERRACE@FIRSTCOMMERCIAL.NET

LEASE TYPE | Gross

AVAILABLE | 500 - 5,891 SF

LEASE TERM | Negotiable

LEASE RATE | \$13.00 SF/yr



UNAVAILABLE

AVAILABLE

SUITE	TENANT	SIZE	RATE
150	Available	5,891 SF	\$13.00 SF/yr
140	Available	500 SF	\$13.00 SF/yr
120	Available	2,463 SF	\$13.00 SF/yr
105	Available	1,558 SF	\$13.00 SF/yr
100	Available	1,234 SF	\$13.00 SF/yr

FOR LEASE

