

For Sale
Retail – Lt. Industrial
Development Land



**5.5 AC – SEC Pleasant View & Seltice Way
Post Falls, Idaho**

Prime Development Opportunity

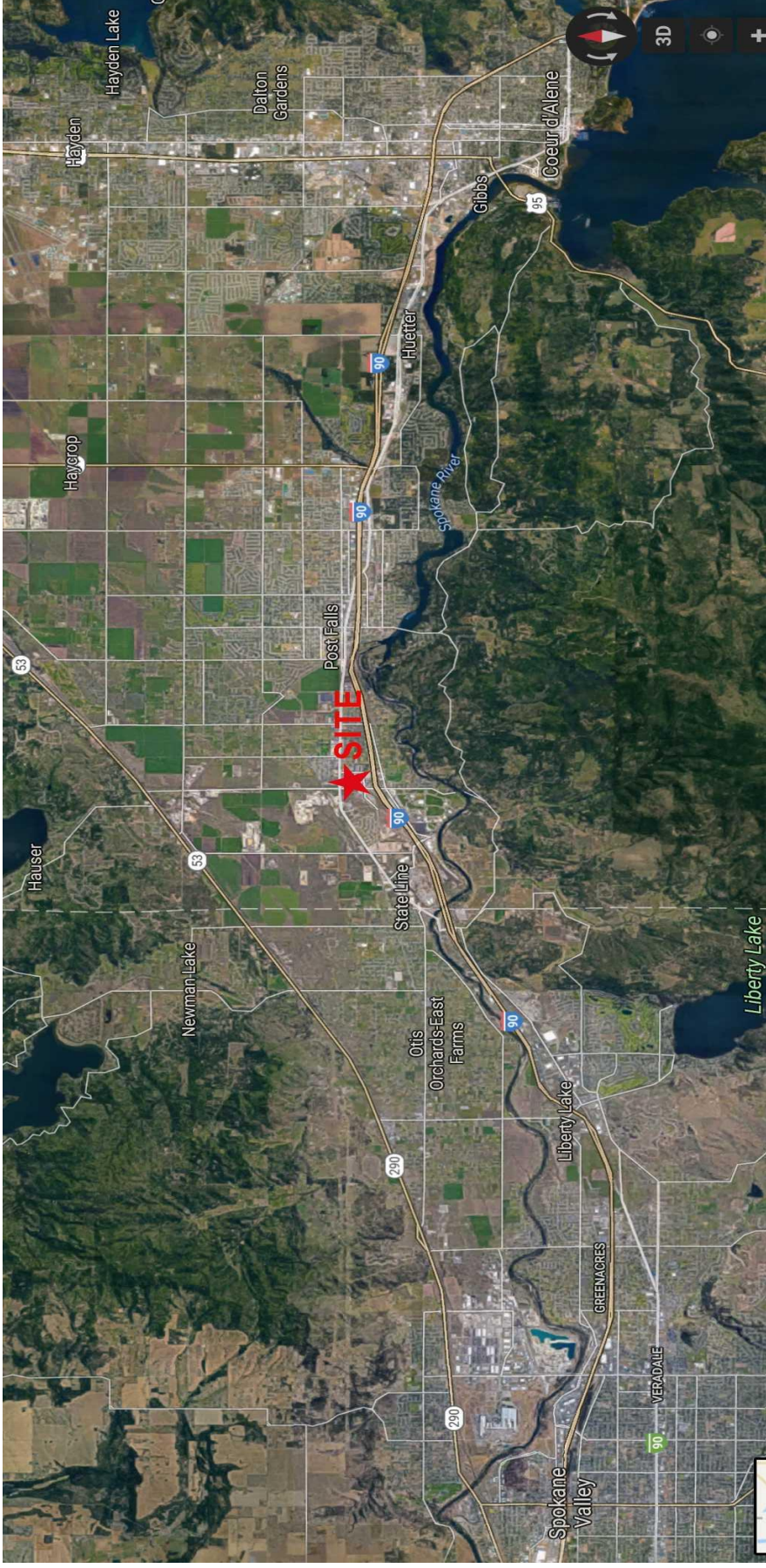
- Hard corner signalized intersection
- High visibility
- Quick access to Pleasant View/I-90 FWY exchange
- Near Loves & Flying J Travel Centers
- Existing Surplus tenant – month to month
- Adjacent to major companies
 - Cabelas
 - Walmart
 - SYSCO
 - Buck Knives
 - Tedder Industries
 - University of Idaho Workforce Training
- All utilities at site. Shovel ready

Offered at
\$1,437,480
(\$6.00 per SF)

Broker contact:

Steve Ridenour
+1 208 660 5010
sridenour@naiblack.com

105 N 1st St., Ste 300,
Coeur d'Alene, ID 83814



Strategic Post Falls Location at Idaho/Washington State Line

Broker contact:

Steve Ridenour

+1 208 660 5010

sridenour@naiblack.com

105 N 1st St., Ste 300,

Coeur d'Alene, ID 83814

NO WARRANTY OR REPRESENTATION, EXPRESS OR IMPLIED, IS MADE AS TO THE ACCURACY OF THE INFORMATION CONTAINED HEREIN, AND THE SAME IS SUBMITTED SUBJECT TO ERRORS, OMISSIONS, CHANGE OF PRICE, RENTAL OR OTHER CONDITIONS, PRIOR SALE, LEASE OR FINANCING, OR WITHDRAWAL WITHOUT NOTICE, AND OF ANY SPECIAL LISTING CONDITIONS IMPOSED BY OUR PRINCIPALS. NO WARRANTIES OR REPRESENTATIONS ARE MADE AS TO THE CONDITION OF THE PROPERTY OR ANY HAZARDS CONTAINED THEREIN ARE ANY TO BE IMPLIED.

NAIBlack

107 S Howard St
Spokane, WA 99201
+1 509 623 1000
naiblack.com