

Airport Gardens

For Lease
1325 Airmotive Way,
Reno, NV 89502



Airport Gardens
is more than an
office building.
It's a community!

NAI Alliance

Property Features

- 24 hour surveillance
- Reno Family: owner occupied
- On-site maintenance staff
- Dedicated clean power to your Suite



FOR MORE INFORMATION
CONTACT:

Dan Oster, SIOR

NV #B.0143648.LLC
(775) 336 4665
DOster@naialliance.com

Chase Houston

NV #S.0174274
(775) 336 4645
chouston@naialliance.com

Derek Carroll

NV #BS.0145531
(775) 336 4644
dcarroll@naialliance.com

5345 Kietzke Lane Suite 100
Reno NV 89511
(775) 336 4600
naialliance.com

NAI Alliance



Airport Gardens

A Building that Connects
People with Nature

Property Features

- Beautiful office building close to the Airport and freeway (I580)
- Ample covered and non covered parking
- Building amenities: Gym w/ showers, dry-cleaning, sauna and many more.
- Atrium is unique green environment copied by architects in urban areas.
- Common areas available for all tenants for meeting space, kitchen and conferences.
- Upgraded interior lighting
- Fiber optics

AVAILABLE SPACE

1st FLOOR EXECUTIVE SUITES	SQ.FTG.	RATE
Suite L	616 SF	\$2.10/ PSF
Open Floor Plan		
Suite Q	296 SF	\$2.10/ PSF
Open Floor Plan		

2nd FLOOR SUITES	SQ.FTG.	RATE
Suite 276	611 SF	\$1.60/PSF
2 Private Offices & Reception Area		

Airport Gardens Floor Plans

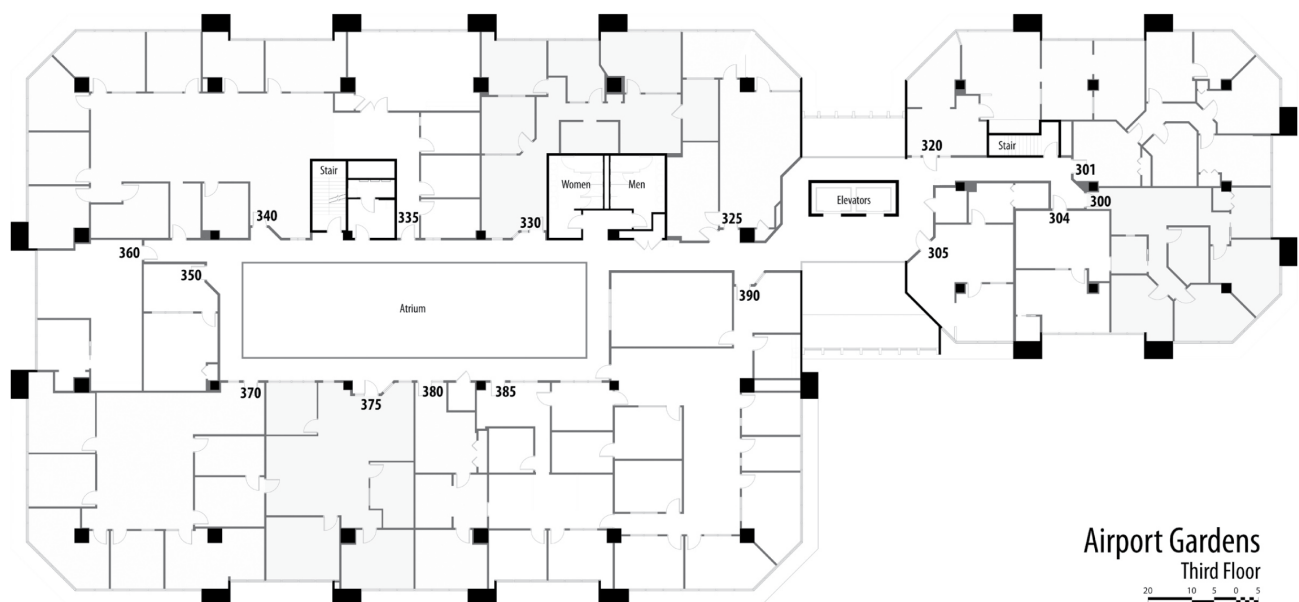
1325 Airmotive Way, Reno, NV 89502



Airport Gardens
First Floor



Airport Gardens
Second Floor

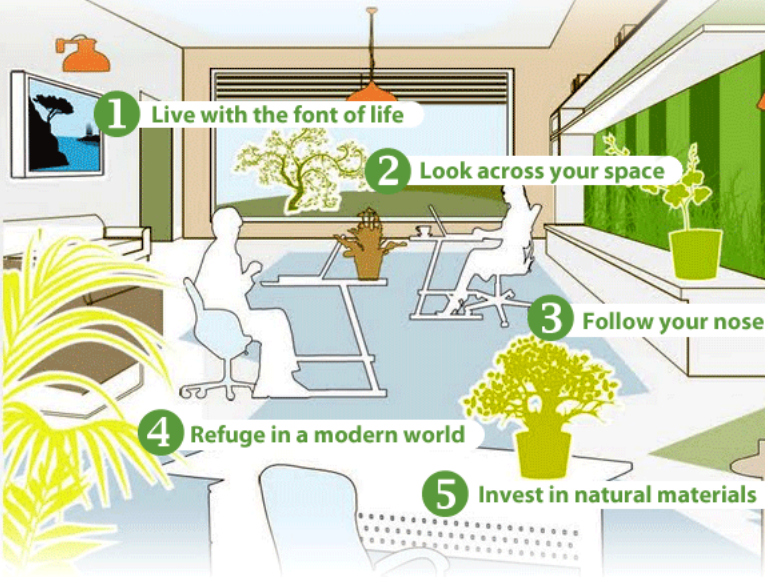


Airport Gardens
Third Floor

Do you feel a need for nature... at work?



Translating as 'love of life' or 'love of living systems,' the term, Biophilia, recognizes the instinctive need for humans to be in touch with nature. By incorporating the 5 elements of interior landscape design, you can enhance your workplace environment.



1. Live with the font of life

Roughly 75% of the Earth is covered by water. Help satisfy our primal desire to be close to bodies of water by adorning your walls with artwork featuring scenes of lakes, rivers, and waterfalls.

2. Look across your space

Afford your employees and visitors a view of nature by planting an atrium somewhere inside your space. This will give those people furthest away from a window the opportunity to re-connect with nature.

3. Follow your nose

Tests show a 40% improvement in our mood when exposed to a pleasant fragrance. Scenting your space with a distinctive aroma is an ideal way to rebuild our connection to the natural environment.

4. Refuge in a modern world

A study found areas decorated with plants were viewed as 17% more interesting and 11% less stressful. It's why people go to the park to relax. We have an instinctive need to seek foliage-rich refuge.

5. Invest in natural materials

Our instincts are to surround ourselves with more natural products. Use plant containers made of wood, woven banana leaves, bamboo, or palm fronds to reinforce your commitment to Biophilic Design.

REFERENCES:

http://www.ambius.com/biophilia/refuge_shelter
<http://earthobservatory.nasa.gov/Features/Water>

<http://www.lisahoffmanbeauty.com/fragrance-101/scent-facts>
<http://www.plants-in-buildings.com/whyplants.php>

For more information, visit www.ambius.com/biophilia

