

# 1505 King Street Ext.

Charleston, SC 29405



**Dexter Rumsey, IV**

Partner | Broker

843.452.9417

[drumsey@naicharleston.com](mailto:drumsey@naicharleston.com)

**NAI**Charleston

# OFFICE SPACE

Suite 109 -  $\pm 4,222$  SF

Suite 110 -  $\pm 4,181$  SF

109 & 110 -  $\pm 8,403$  SF



- Unique opportunity to sublease office space at Pacific Box & Crate
- Suites are located adjacent to Edmund's Oast Brewery with direct access to multiple dining options at The Workshop
- Available in "turn-key" condition
- Furnishings negotiable
- Ample parking spaces available on-site
- Suite 109 & Suite 110 can be combined and are nearly identical in layout
- Each contains 4 private offices, open bullpen, and kitchenette with access to shared bathrooms including showers
- Available immediately at below market sub-lease rate

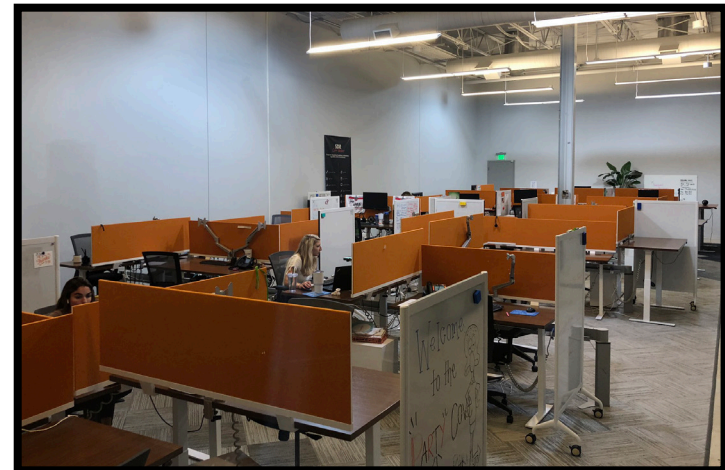
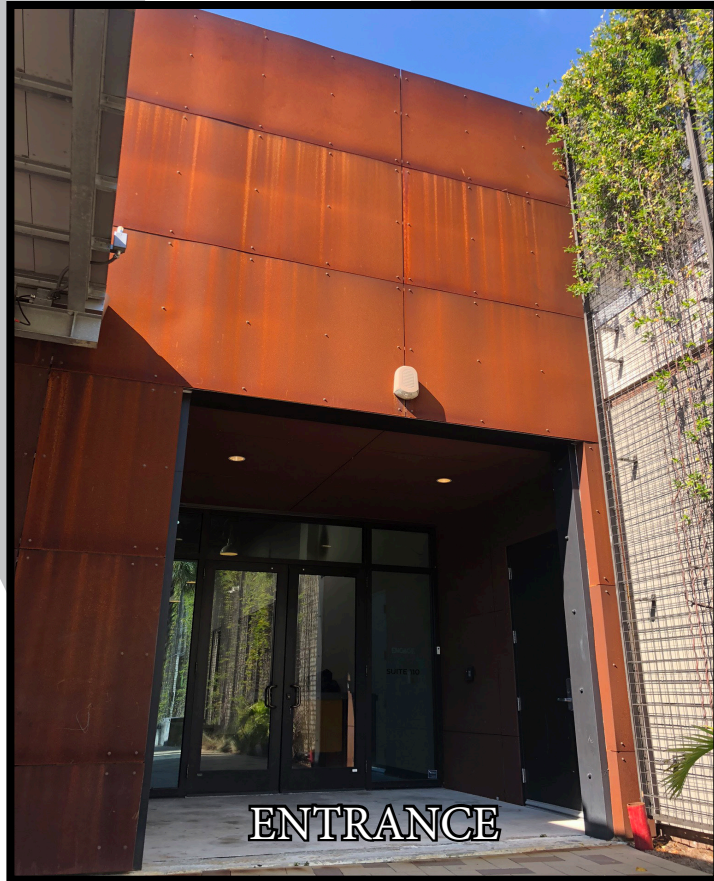
**\$28.00 PSF, Modified Gross**

# Photos

PACIFIC BOX & CRATE



# Photos

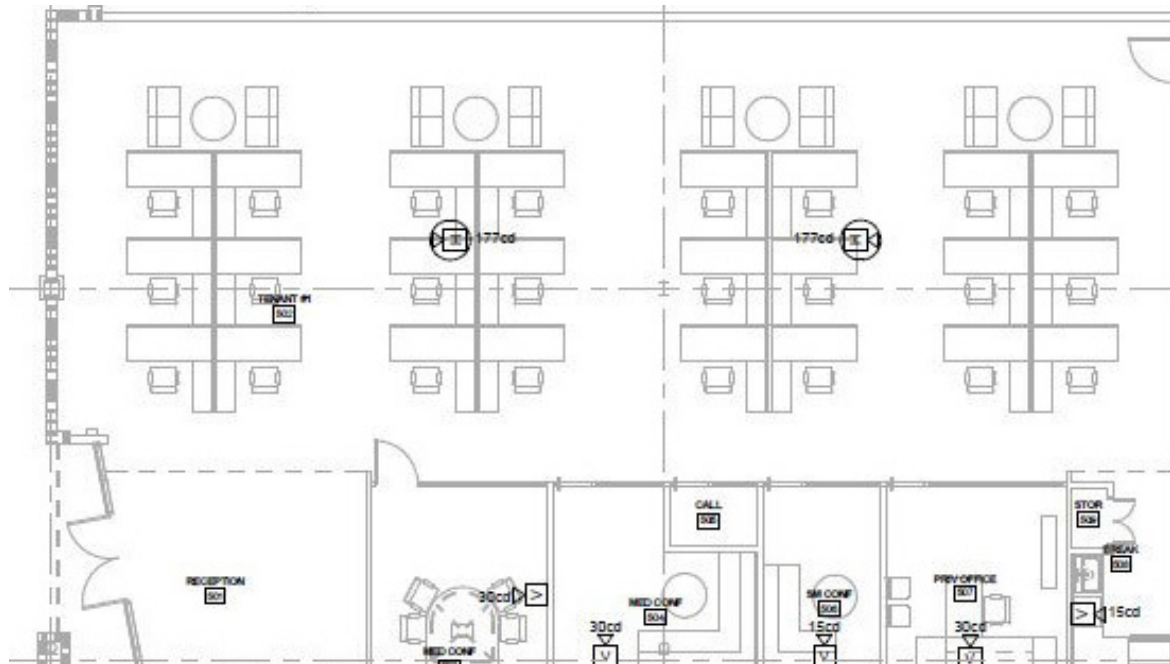


# Location

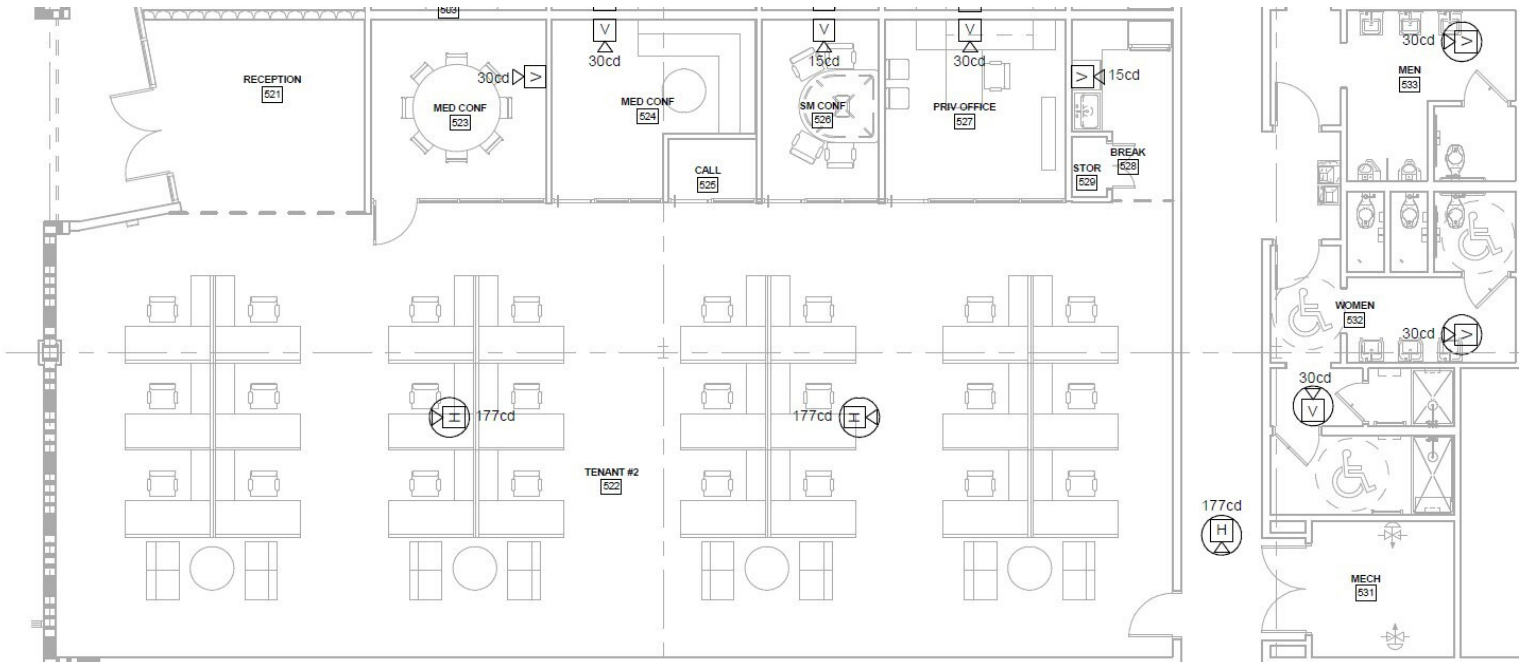


# Floor Plans

Suite 109



Suite 110



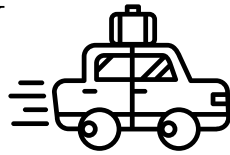
# CHS Fast Facts



## POPULATION



775,000



28 PPL

ON AVERAGE, THE AREA SEES 28 NEWCOMERS PER DAY

## WORKFORCE

±26,000

23.5%

INCREASE IN EMPLOYMENT OVER THE LAST DECADE

JOBS FORECASTED TO BE ADDED IN NEXT 5 YEARS



## KEY ECONOMIC DRIVERS

### TOURISM

7 MILLION

VISITORS ANNUALLY



\$7 BILLION

AVERAGE ANNUAL ECONOMIC IMPACT

## AVIATION



±13.9 BILLION

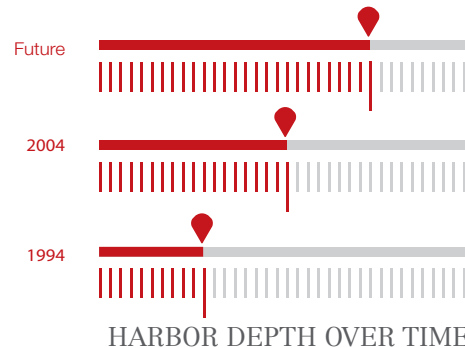
\$ PUMPED INTO CHARLESTON

AVIATION MAKES UP

40%

OF LOCAL ECONOMY

## PORT OF CHARLESTON



±53 BILLION

ANNUAL ECONOMIC ACTIVITY

±187,600

JOBS CREATED

## AUTOMOTIVE

2ND

HIGHEST EMPLOYMENT CONCENTRATION FOR TRANSPORTATION EQUIPMENT MANUFACTURING

**VOLVO**

\$1.1 BILLION

INVESTMENT FROM VOLVO CAR USA

\$500 MILLION



INVESTMENT FROM MERCEDES-BENZ

# Contact Us

Dexter Rumsey

Partner | Broker

843.452.9417

[drumsey@naicharleston.com](mailto:drumsey@naicharleston.com)

*DISCLAIMER: The information contained herein has been given to us by the owner of the property or other sources we deem reliable. We have no reason to doubt its accuracy, but we do not guarantee it. All information should be verified prior to purchase or lease.*