

Beacon Hill Residential Lots

Spokane, Washington 99217

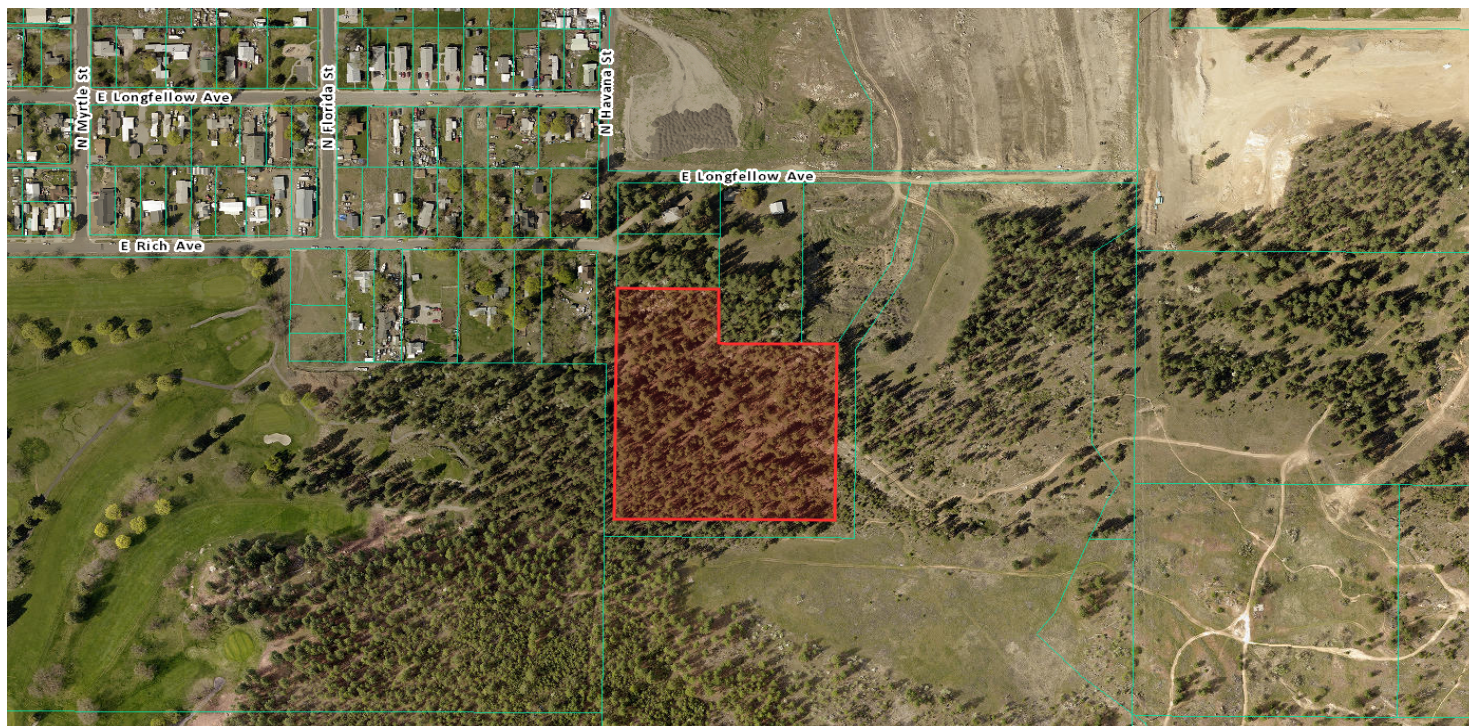
Property Highlights

- 7.2 Acres
- Zoned residential single family 4-10
- Access approves up to 29 lots within Urban Growth Boundary
- Amazing views of East Spokane
- Adjacent to Esmeralda Golf Course
- Water 130' away in Rich Ave
- Sewer 246' away in Rich Ave

Sale Price: TBD



For more information
Drew Ulrick, SIOR
O: 509 622 3562
dulrick@naiblack.com



Population	1 Mile	3 Miles	5 Miles
Total Population	3,654	71,440	202,119
Average age	32.2	34.9	36.0

Households & Income	1 Mile	3 Miles	5 Miles
Total households	1,281	28,565	83,533
# of persons per HH	2.85	2.49	2.34
Average HH income	\$55,184	\$57,569	\$62,053

* Demographic data derived from Esri Business Analyst

