

For Lease

End Cap Office/Flex Space

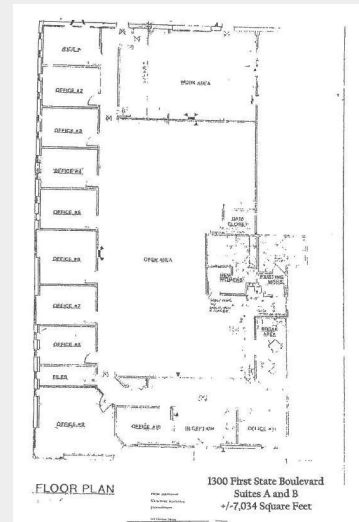
+/- 7,034 SF



1300 First State Blvd., Wilmington, Delaware 19804

## Property Features

- End Cap Unit with 12 Perimeter Offices, Open Work Area
- High Quality Masonry Building
- Drive In Loading/Receiving Area
- Great Window Lines/Economical Finished Space
- Available October 2019
- Conversion to Traditional Flex Space Possible
- Professional Property Management
- Ample parking
- Rate: Negotiable/NNN

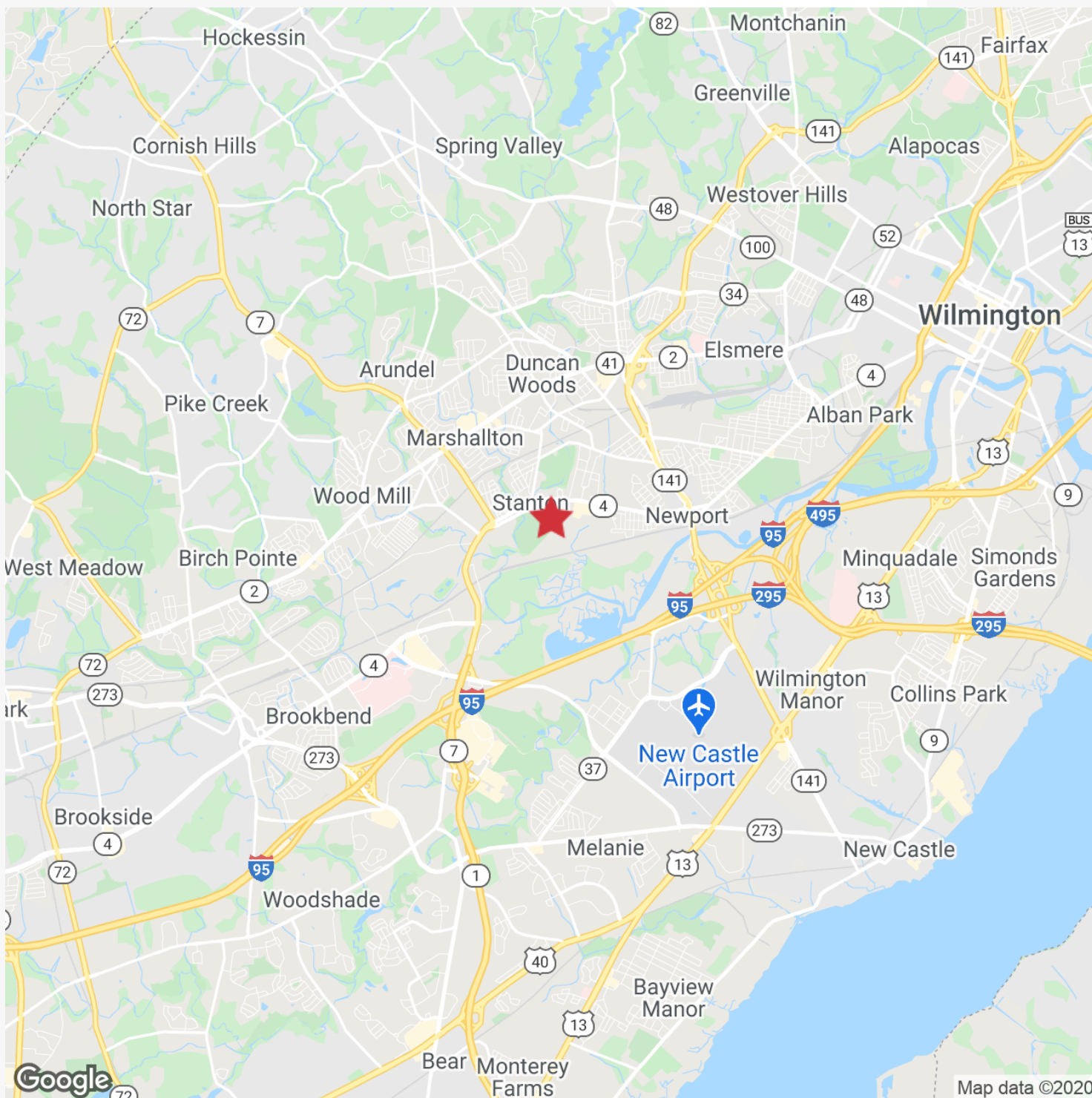


For more information:

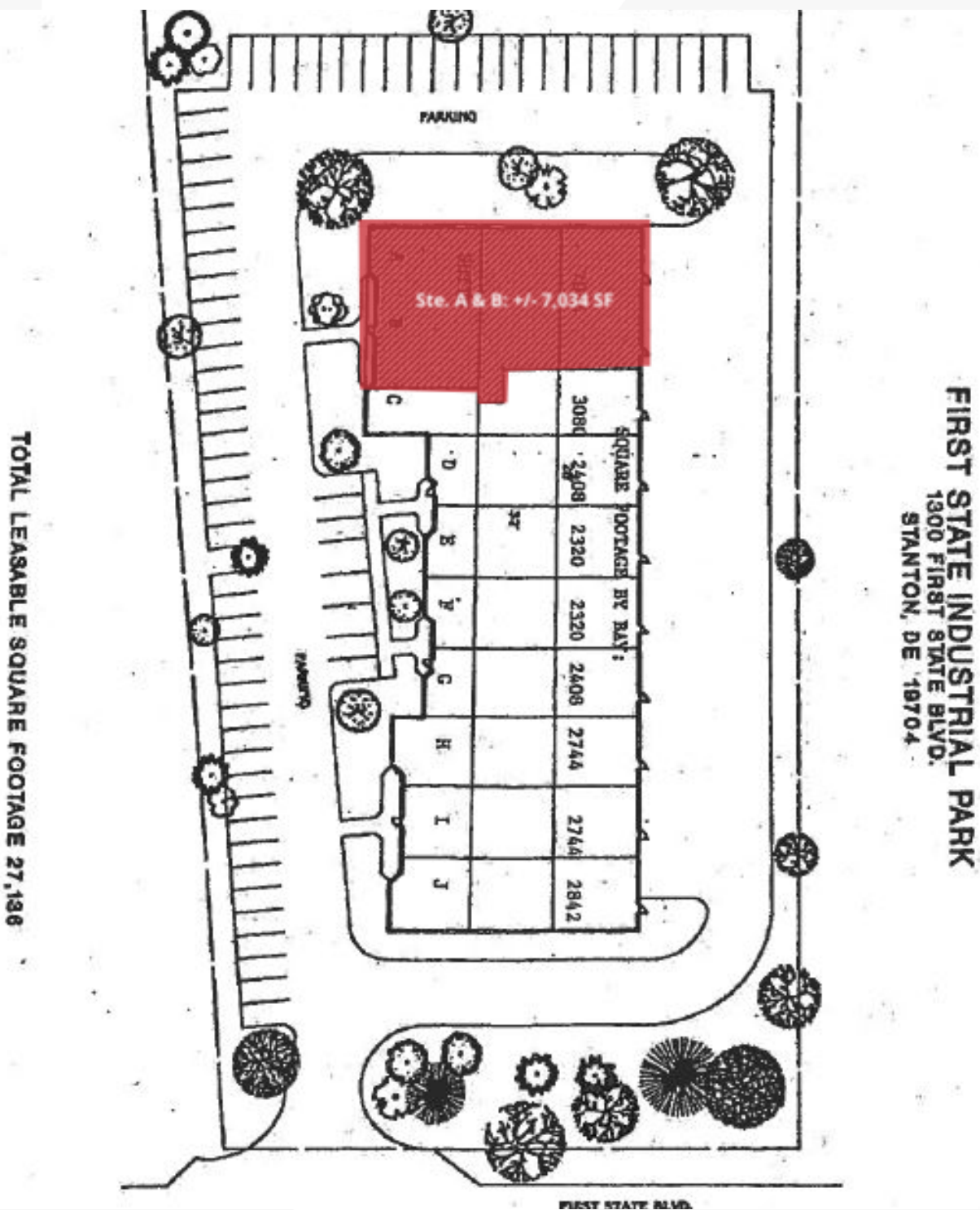
**Tim Plemmons, MICP**

302 322 9500 • C: 610 675 5591 • [tplemmons@emoryhill.com](mailto:tplemmons@emoryhill.com)

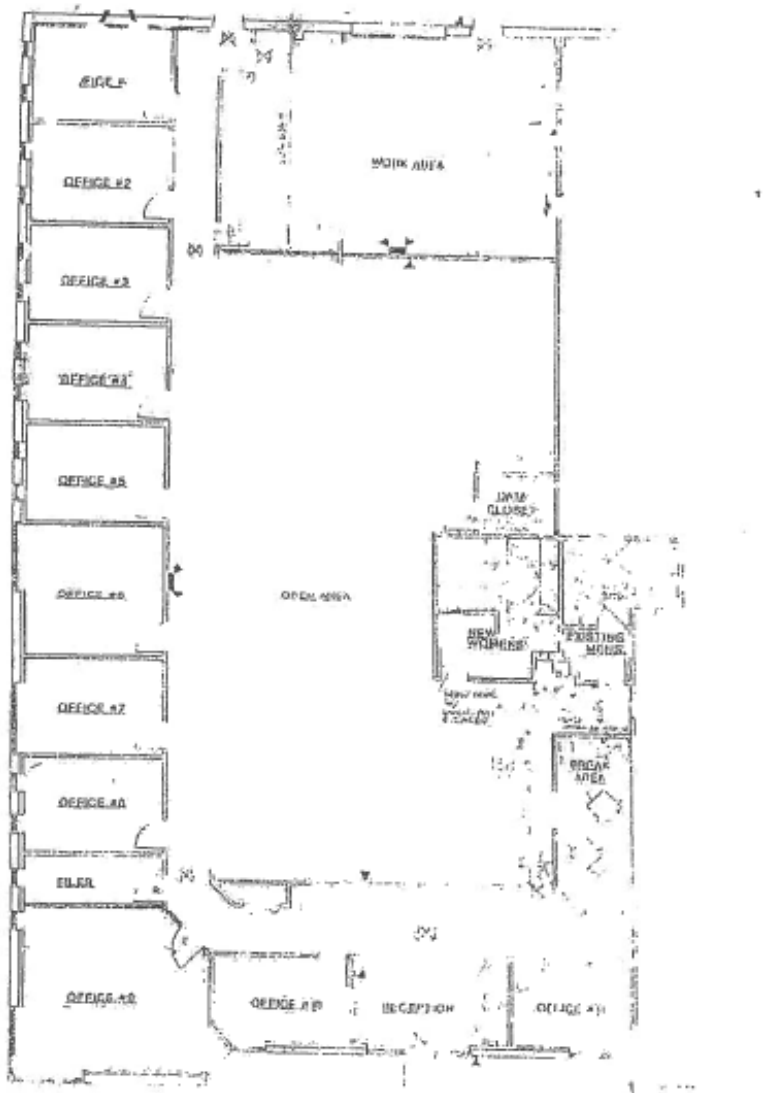
# Location Map



# Site Plan



**EXHIBIT "A-1"**  
**FLOOR PLAN**



**FLOOR PLAN**

**1300 First State Boulevard**  
**Suites A and B**  
**+/-7,034 Square Feet**

How to use:  
Drawing symbols  
Dimensions  
etc.



Google, U.S. Geological Survey, USDA Farm Service Agency



Google, ©2020 Maxar Technologies, U.S. Geological Survey