



## 1100 N Grant Ave

Wilmington, Delaware 19805

### Property Features

- Entire building available +/- 8,526 sf
- 1st Floor: +/- 3,332 sf
- 2nd Floor: +/- 3,038 sf
- Loft: +/- 2,156 sf
- Convenient Wilmington location off Pennsylvania Ave.
- Great access to I-95 and Rt 141
- Abundant off-street parking including covered spaces
- Second floor unit with new ADA elevator
- Rate Negotiable (Net of Electrical & Janitorial)



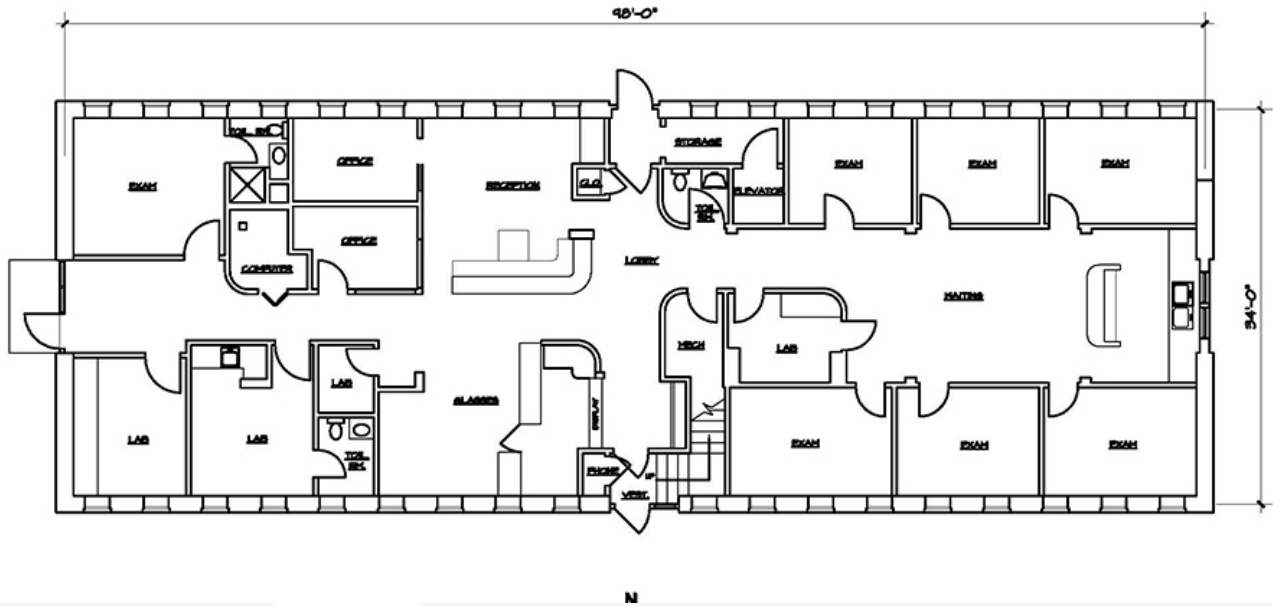
For more information:

**David Morrison, CCIM**

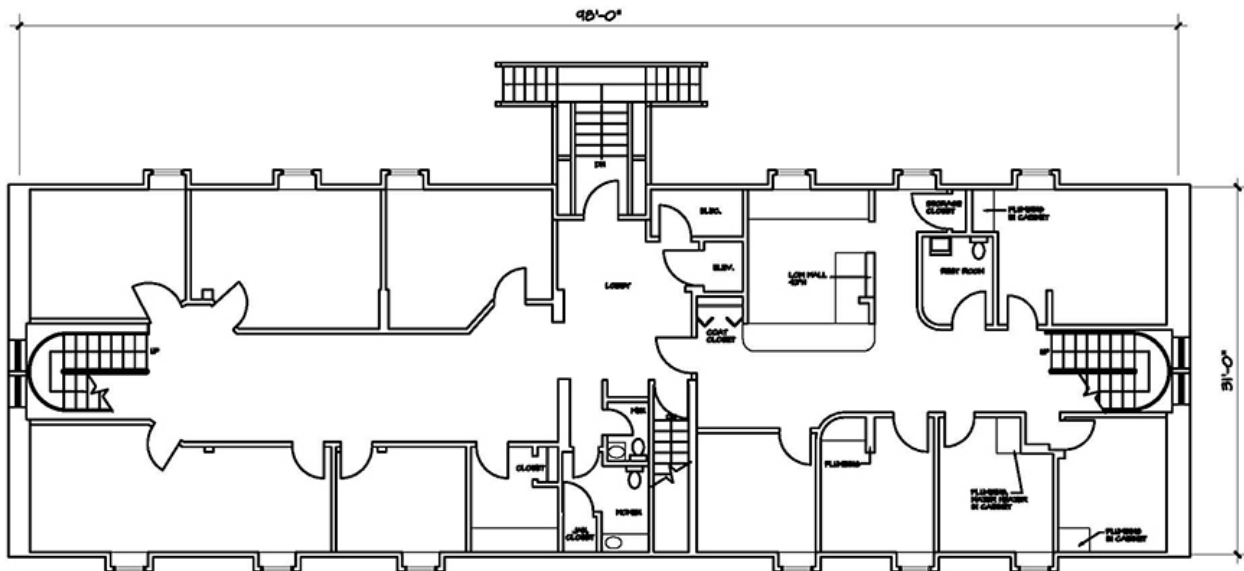
302 322 9500 x302 • C: 302 668 8700 • davemorrison@emoryhill.com

# For Lease Office

## First Floor



## Second Floor



# For Lease Office

## Loft

