



**8675 Hayden Place
Culver City, CA 90232**

**Sublease
Available**

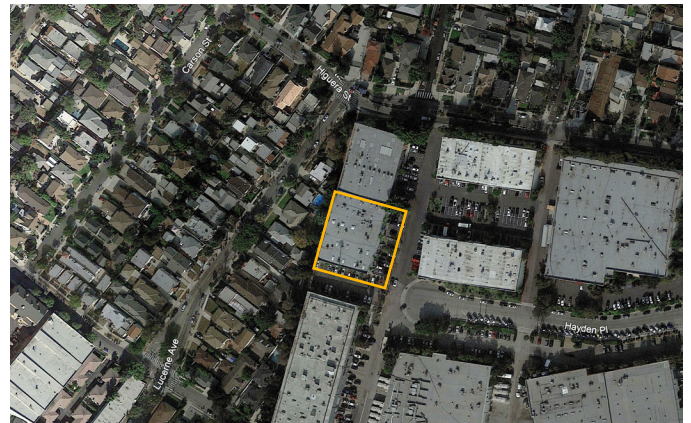
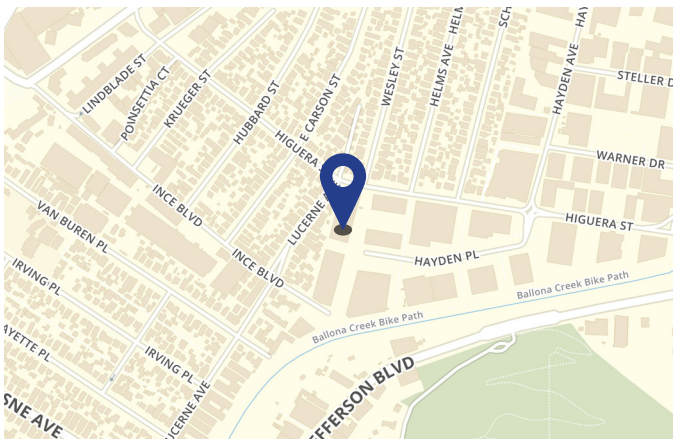
Space Profile

| | |
|---------------------|---|
| Premises | 9,694 SF |
| Rental Rate | \$3.00 NNN (nets = \$0.40/SF/mo) |
| Availability | Now |
| Term | Through June 30, 2023 |
| Parking | Approximately \$135/car (with 10+ additional parking spaces available off-site) |

Features

- Excellent location in the heart of the Hayden Tract
- Plug-n-Play creative space
- Private outdoor patio
- Short walk to restaurant & retail amenities at Platform (<https://platformla.com>)
- Fiber (1G) in the building

Map



For More Information

Seth Wellisch
310.980.8942 mobile
swellisch@cresa.com
BRE #01335793

Dan Gallup
310.795.5836 mobile
dgallup@cresa.com
BRE #01446968

11726 San Vicente Blvd., Suite 500, Los Angeles, CA 90049



Even though obtained from sources deemed reliable, no warranty or representation, express or implied, is made as to the accuracy of the information herein, and it is subject to errors, omissions, change of price, rental or other conditions, withdrawal without notice, and to any special listing conditions imposed by our principals.

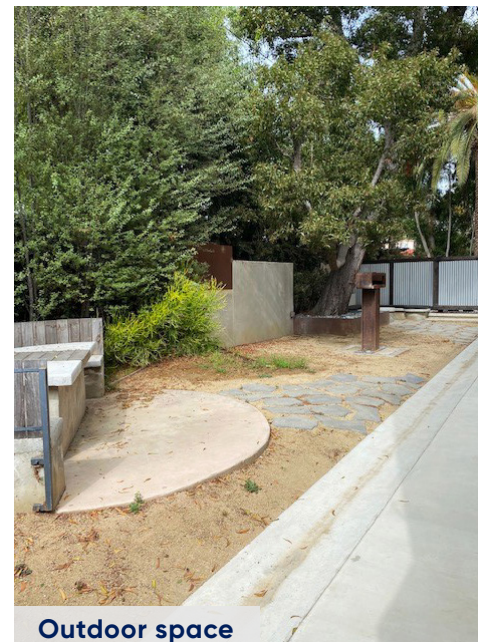
[illegible]

Seth Wellisch
310.980.8942 mobile
swellisch@cresa.com
BRE #01335793

Dan Gallup
310.795.5836 mobile
dgallup@cresa.com
BRE #01446968



8675 Hayden Place
Culver City, CA 90232



For More Information

Seth Wellisch

310.980.8942 mobile
swellisch@cresa.com
BRE #01335793

Dan Gallup

310.795.5836 mobile
dgallup@cresa.com
BRE #01446968



8675 Hayden Place
Culver City, CA 90232

Ground Floor - Interior Photos



For More Information

Seth Wellisch

310.980.8942 mobile
swellisch@cresa.com
BRE #01335793

Dan Gallup

310.795.5836 mobile
dgallup@cresa.com
BRE #01446968