

DEVELOPMENT | LAND FOR SALE

2340 E SOUTH BOULEVARD



OFFERING SUMMARY

Sale Price:	\$247,500
Available SF:	
Lot Size:	9.9 Acres
Price / Acre:	\$25,000

PROPERTY OVERVIEW

Located in a qualified Opportunity Zone, this 9.9 acre parcel with access from Dorchester Drive and South East Blvd. 9.9 acre parcel with access from Dorchester Drive and South East Blvd. Good for many commercial uses. Neighboring businesses are O'Reily's Auto Parts, Captain D's Seafood, Rite Aid Drug Store, Advanced Auto, Goo Goo Car wash, many restaurants and convenience stores. Located just off the South East Boulevard within close proximity to US Highway 231 South, and I-85.

PROPERTY HIGHLIGHTS

- Qualified Opportunity Zone
- Close Proximity to U.S Highway 231 and Interstate 65

PAUL HODGES

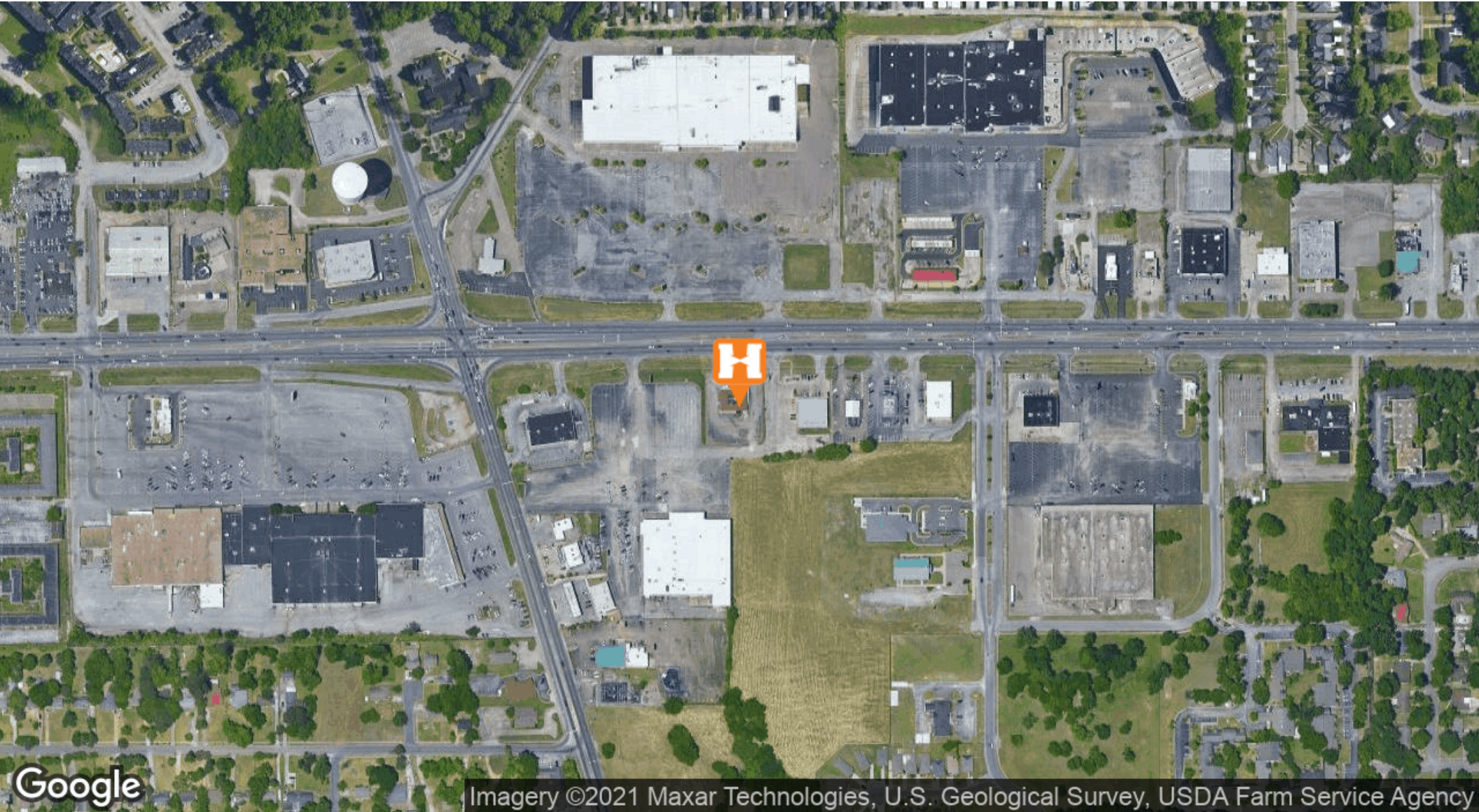
paul.hodges@hodgeswarehouse.com
334.495.8888

**THE RIGHT PLACE.
THE RIGHT SPACE.**

*All information is from sources deemed reliable, but no warranty is made as to the accuracy thereof and same is submitted subject to errors, omissions, change of price, or other conditions, such as prior sales or withdrawal without notice by Hodges Commercial Real Estate, Inc. or the Owner.

2340 E SOUTH BOULEVARD | LAND FOR SALE

LOCATION MAPS



PAUL HODGES
paul.hodges@hodgeswarehouse.com
334.495.8888

**THE RIGHT PLACE.
THE RIGHT SPACE.**

*All information is from sources deemed reliable, but no warranty is made as to the accuracy thereof and same is submitted subject to errors, omissions, change of price, or other conditions, such as prior sales or withdrawal without notice by Hodges Commercial Real Estate, Inc. or the Owner.

DEMOGRAPHICS MAP & REPORT



**THE RIGHT PLACE.
THE RIGHT SPACE.**

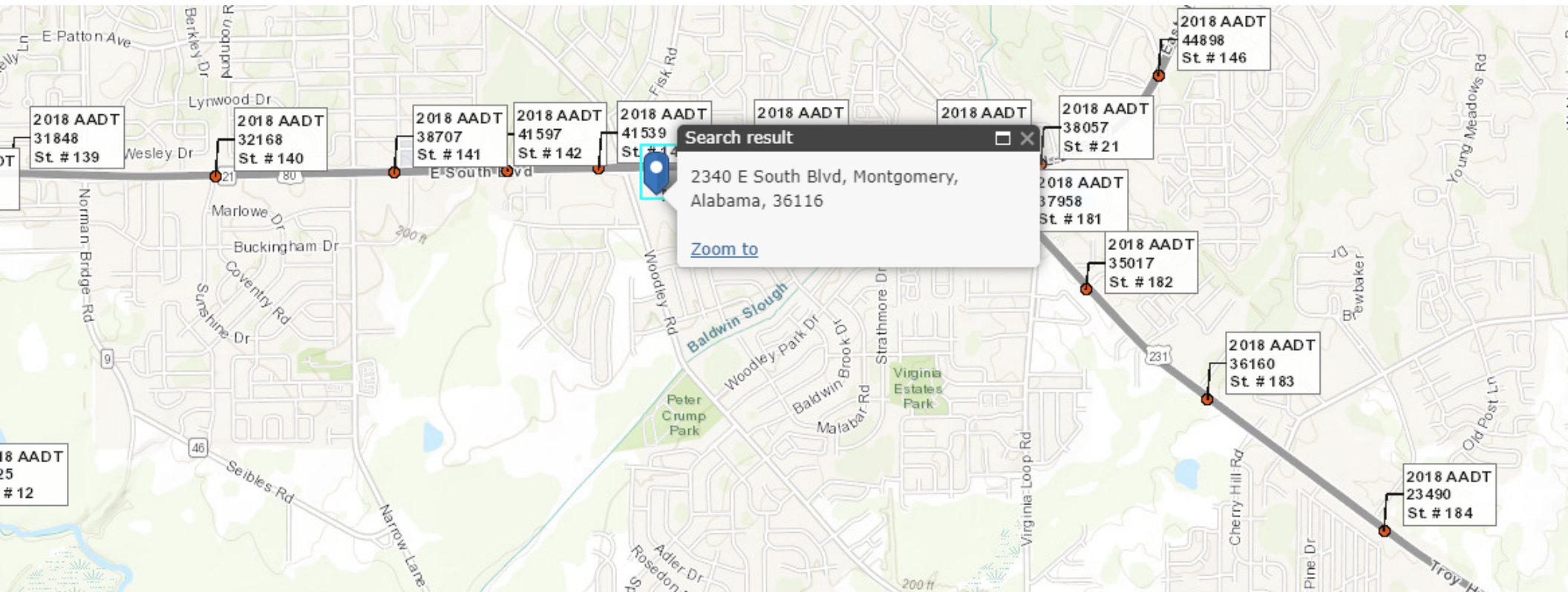
Montgomery

Google

Rolling Hills
Map data © 2021

2340 E SOUTH BOULEVARD | LAND FOR SALE

TRAFFIC COUNTS



PAUL HODGES

paul.hodges@hodgeswarehouse.com

334.495.8888

**THE RIGHT PLACE.
THE RIGHT SPACE.**

*All information is from sources deemed reliable, but no warranty is made as to the accuracy thereof and same is submitted subject to errors, omissions, change of price, or other conditions, such as prior sales or withdrawal without notice by Hodges Commercial Real Estate, Inc. or the Owner.