

ARCHITECTURAL | CREATIVE BUILDING

FOR LEASE

UNIT 3617 | 3619 | 8437 | 8441
CULVER CITY | CA

eastham
warner

FOR MORE INFORMATION, CONTACT:

DAVID FREITAG

P: 213.270.2235 | M: 310.413.9390
dfreitag@daumcre.com
CA License #00855673

IMANI MCMILLAN

P: 213.270.2230 | M: 310.800.4589
imcmillan@daumcre.com
CA License #02057115



DAUM
COMMERCIAL REAL ESTATE SERVICES

Although all information is furnished regarding for sale, rental or financing is from sources deemed reliable, such information has not been verified and no express representation is made nor is any to be implied as to the accuracy thereof, and it is submitted subject to errors, omissions, changes of price, rental or other conditions, prior sale, lease or financing, or withdrawal without notice. D/AQ Corp. # 01129558

FOR LEASE

eastham warner

PROPERTY HIGHLIGHTS

- HVAC in Suite
- Skylights
- Polished Concrete Floors
- Exposed Bow Truss Ceiling
- Glass Roll-Up Doors
- Ideal for Editing, Special Effects, Advertising and Post Production
- Large Common Area
- Parking: \$180 per space per month on site
- Kitchen in Suite
- Light Rail Stop at Washington & National

FOR MORE INFORMATION, CONTACT:

DAVID FREITAG

P: 213.270.2235 | M: 310.413.9390
dfreitag@daumcre.com
CA License #00855673

IMANI MCMILLAN

P: 213.270.2230 | M: 310.800.4589
imcmillan@daumcre.com
CA License #02057115

Although all information is furnished regarding for sale, rental or financing is from sources deemed reliable, such information has not been verified and no express representation is made nor is any to be implied as to the accuracy thereof, and it is submitted subject to errors, omissions, changes of price, rental or other conditions, prior sale, lease or financing, or withdrawal without notice. D/AQ Corp. # 01129558



FOR LEASE

eastham warner



SITE PLAN

UNIT 3617

2,277 SF

UNIT 3619

2,552 SF

UNIT 8437

3,393 SF

UNIT 8441

2,954 SF

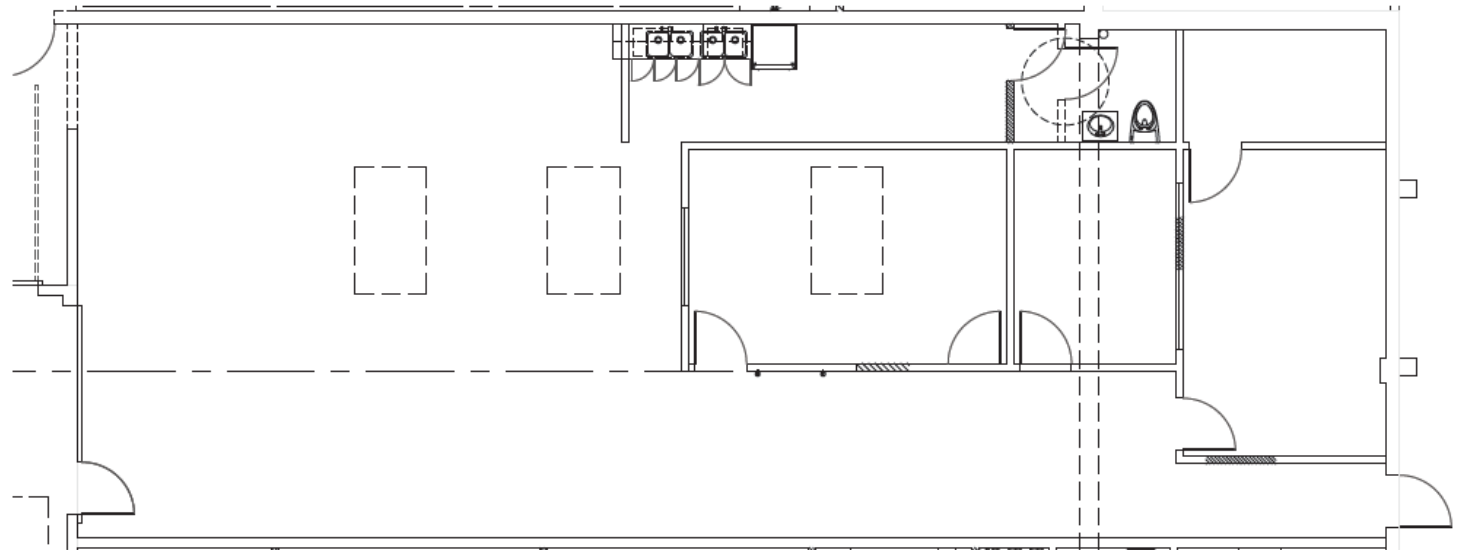


FOR LEASE

eastham warner

DAUM
COMMERCIAL REAL ESTATE SERVICES

UNIT
3617



FOR LEASE

eastham warner



AVAILABLE
2,277 SF



TYPE
OFFICE/CREATIVE



UNIT
36
17



PLEASE SCAN QR CODE
FOR 3D VIRTUAL TOUR

FOR MORE INFORMATION, CONTACT:

DAVID FREITAG

P: 213.270.2235 | M: 310.413.9390
dfreitag@daumcre.com
CA License #00855673

IMANI MCMILLAN

P: 213.270.2230 | M: 310.800.4589
imcmillan@daumcre.com
CA License #02057115

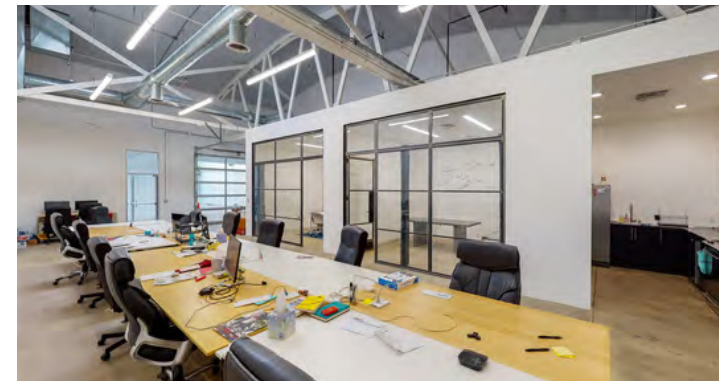
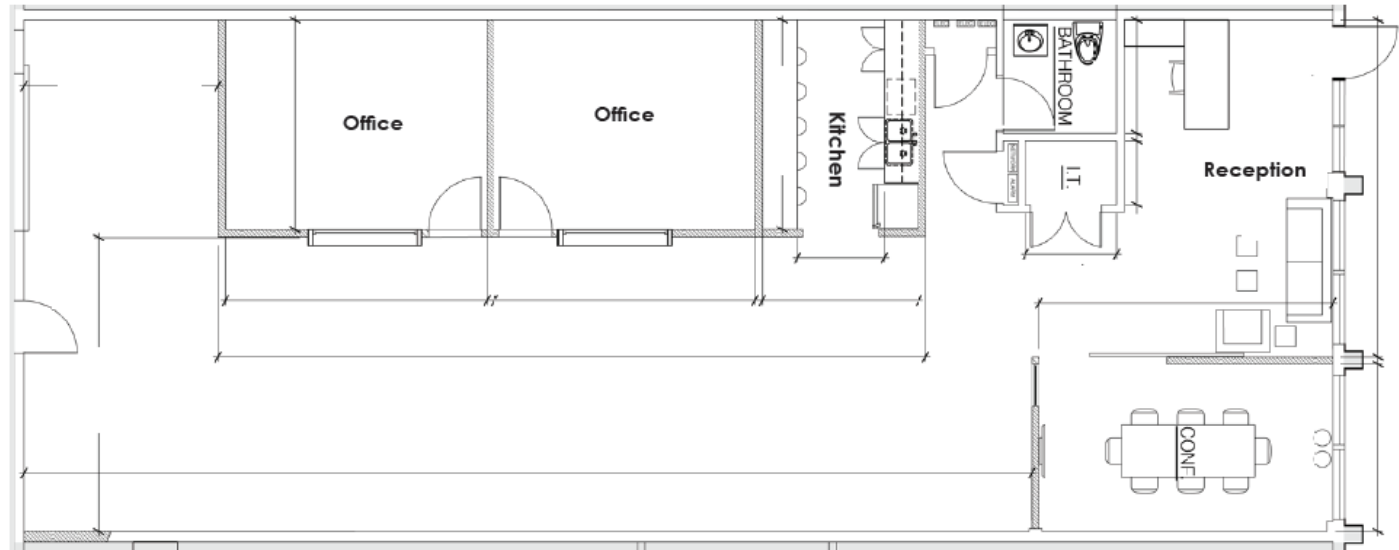
Although all information is furnished regarding for sale, rental or financing is from sources deemed reliable, such information has not been verified and no express representation is made nor is any to be implied as to the accuracy thereof, and it is submitted subject to errors, omissions, changes of price, rental or other conditions, prior sale, lease or financing, or withdrawal without notice. D/AQ Corp. # 01129558

FOR LEASE

eastham warner

DAUM
COMMERCIAL REAL ESTATE SERVICES

UNIT
3619



FOR LEASE

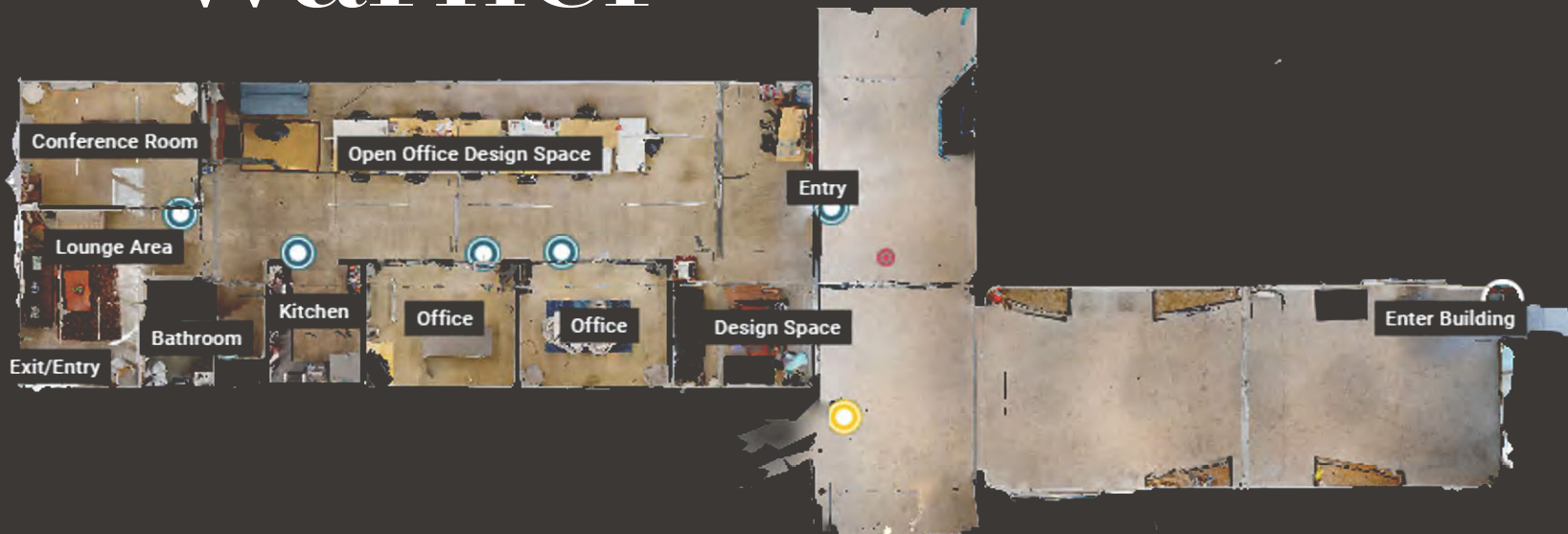
eastham warner



AVAILABLE
2,552 SF



TYPE
OFFICE/CREATIVE



UNIT
36
19



PLEASE SCAN QR CODE
FOR 3D VIRTUAL TOUR

FOR MORE INFORMATION, CONTACT:

DAVID FREITAG

P: 213.270.2235 | M: 310.413.9390
dfreitag@daumcre.com
CA License #00855673

IMANI MCMILLAN

P: 213.270.2230 | M: 310.800.4589
imcmillan@daumcre.com
CA License #02057115

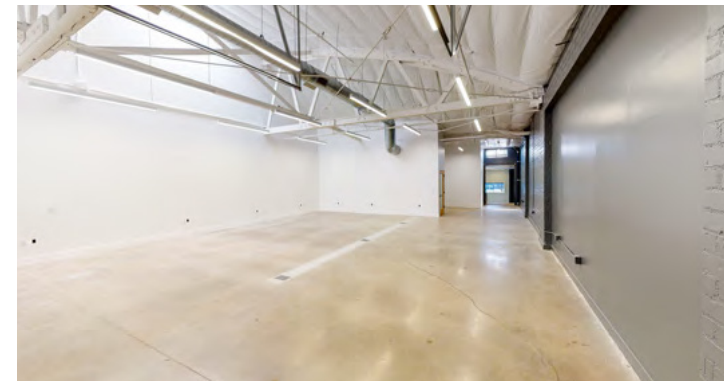
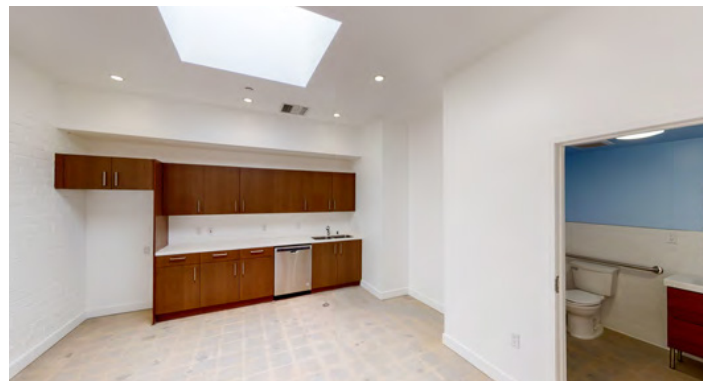
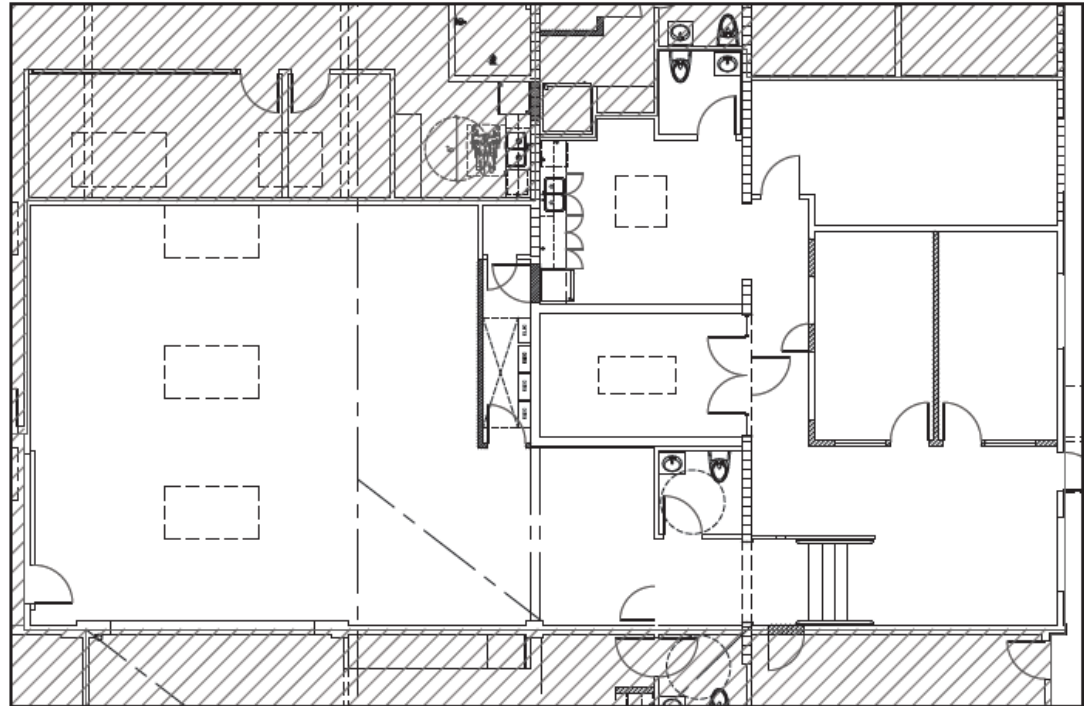
Although all information is furnished regarding for sale, rental or financing is from sources deemed reliable, such information has not been verified and no express representation is made nor is any to be implied as to the accuracy thereof, and it is submitted subject to errors, omissions, changes of price, rental or other conditions, prior sale, lease or financing, or withdrawal without notice. D/AQ Corp. # 01129558

FOR LEASE

eastham
warner

UNIT
8437

DAUM
COMMERCIAL REAL ESTATE SERVICES



FOR LEASE

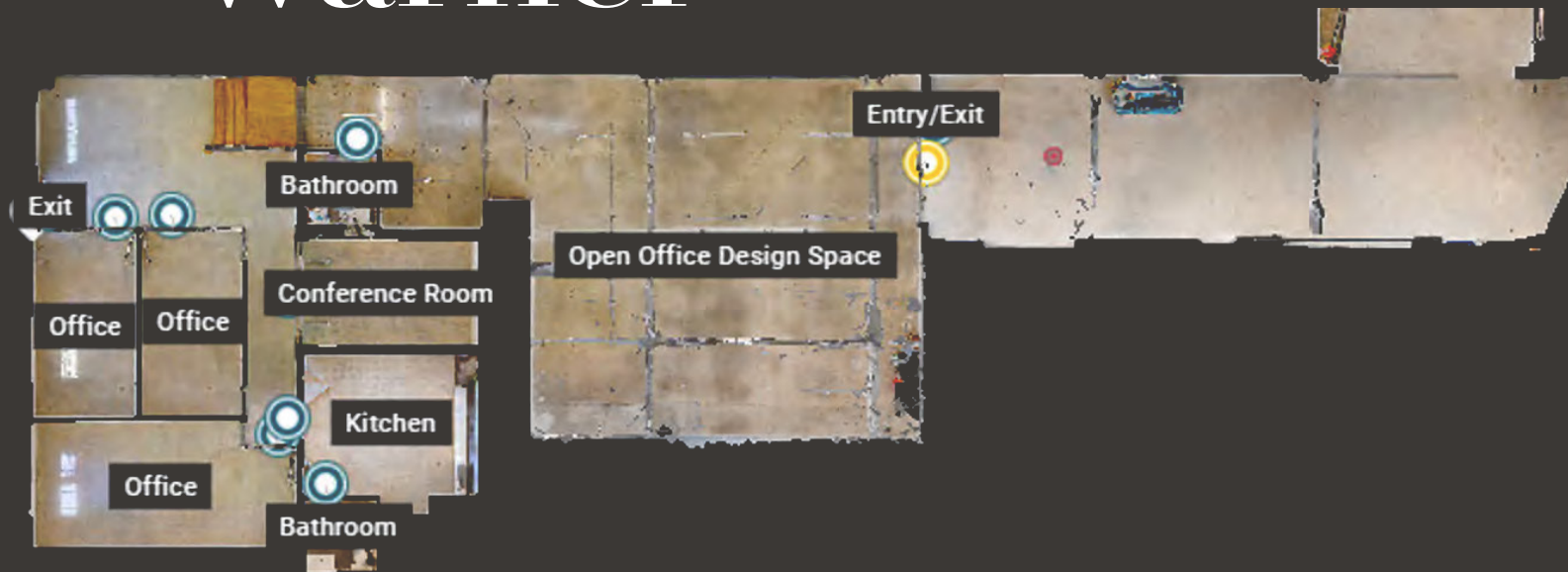
eastham warner



AVAILABLE
3,393 SF



TYPE
OFFICE/CREATIVE



UNIT
84
37



PLEASE SCAN QR CODE
FOR 3D VIRTUAL TOUR

FOR MORE INFORMATION, CONTACT:

DAVID FREITAG

P: 213.270.2235 | M: 310.413.9390
dfreitag@daumcre.com
CA License #00855673

IMANI MCMILLAN

P: 213.270.2230 | M: 310.800.4589
imcmillan@daumcre.com
CA License #02057115

Although all information is furnished regarding for sale, rental or financing is from sources deemed reliable, such information has not been verified and no express representation is made nor is any to be implied as to the accuracy thereof, and it is submitted subject to errors, omissions, changes of price, rental or other conditions, prior sale, lease or financing, or withdrawal without notice. D/AQ Corp. # 01129558

FOR LEASE

eastham
warner

UNIT
8441

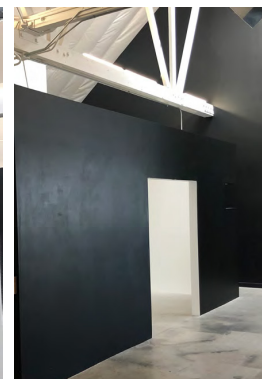
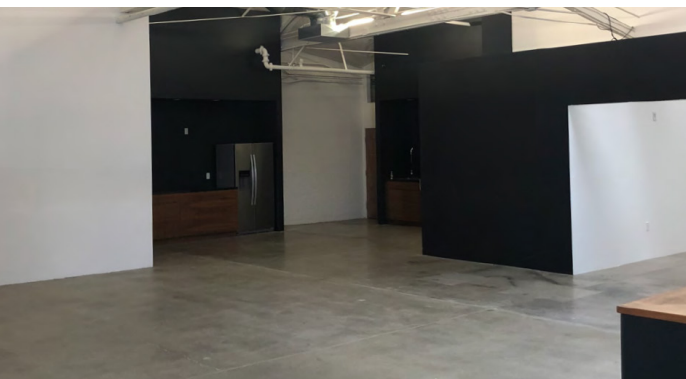
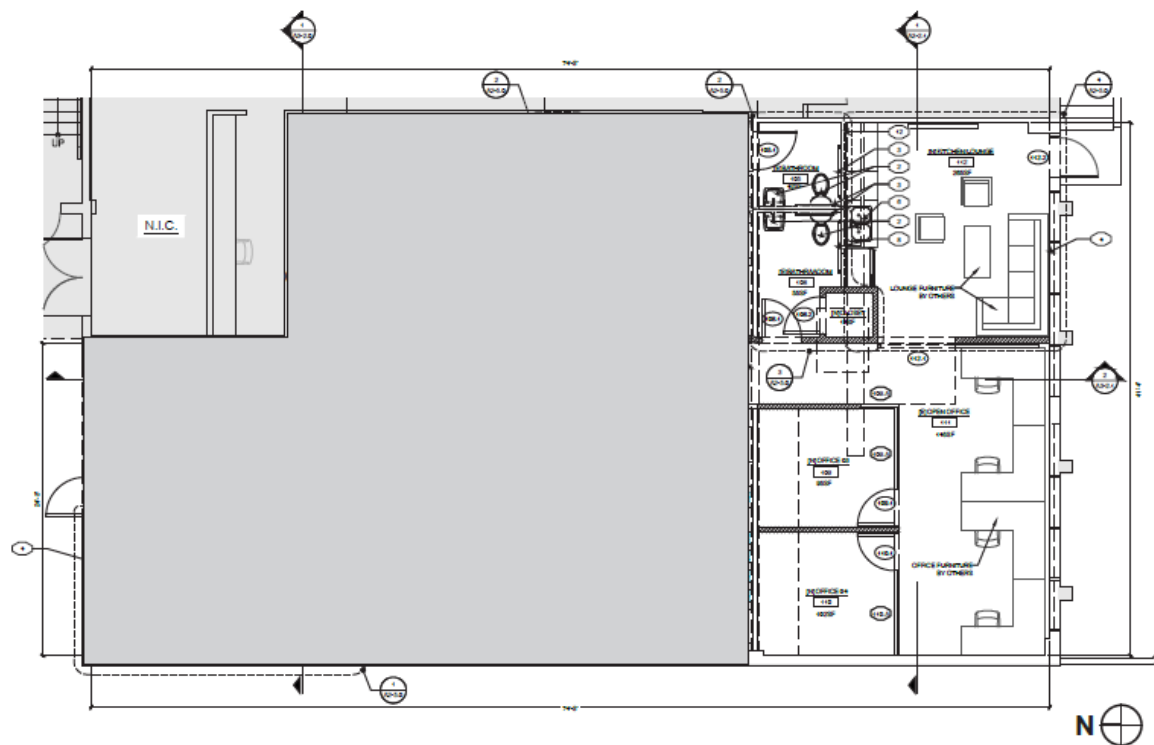


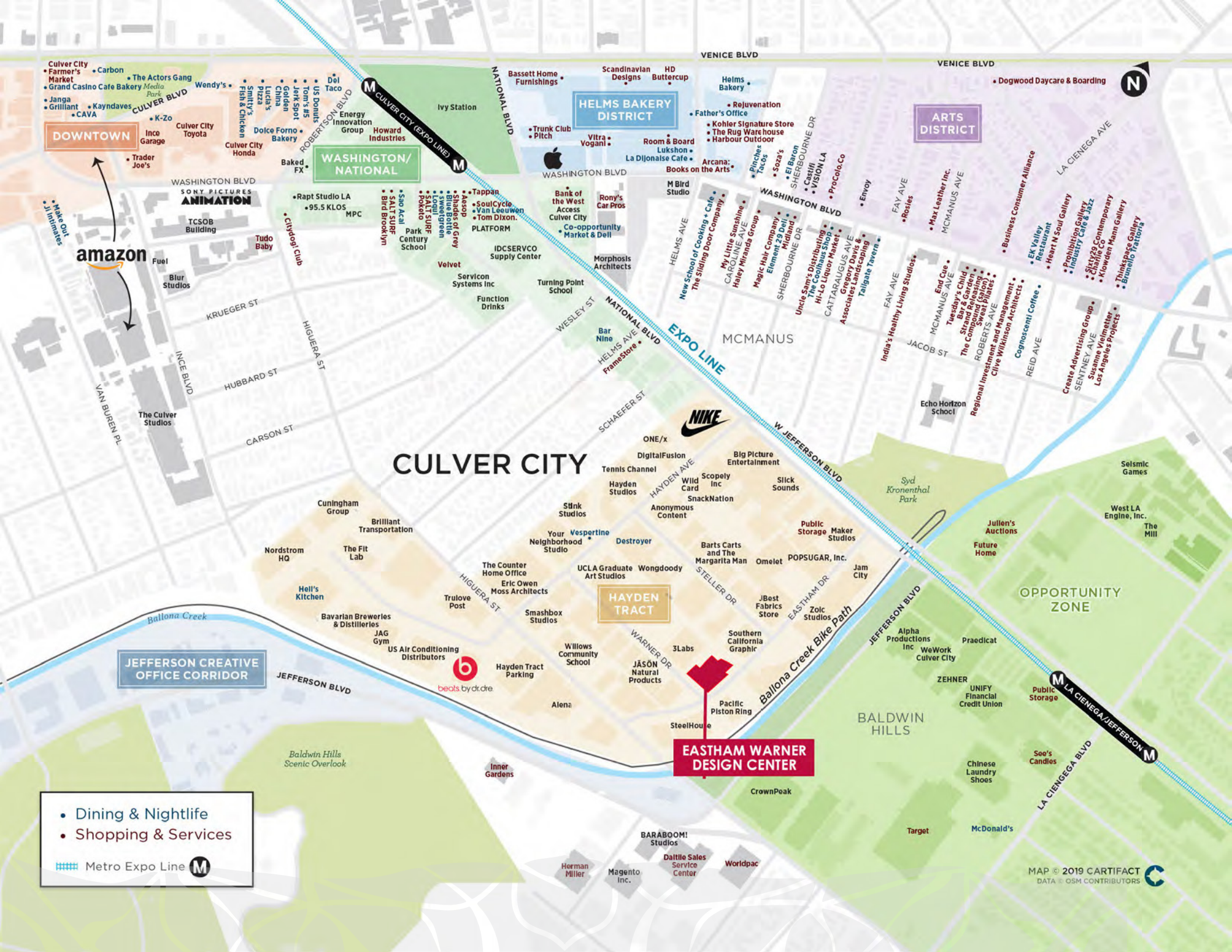
AVAILABLE
2,954 SF



TYPE
OFFICE/CREATIVE

DAUM
COMMERCIAL REAL ESTATE SERVICES





DOWNTOWN

- Culver City Farmer's Market
- Janga Grilliant
- Kayndaves
- CAVA
- Carbon
- The Actors Gang
- Wendy's
- K-Zo
- Inco Garage
- Culver City Toyota
- Culver City Honda
- Trader Joe's
- Fuel
- Blur Studios
- The Culver Studios
- TCSOB Building
- Sony Pictures Animation
- Krueger St
- Ince Blvd
- Van Buren Pl
- Hubbard St
- Carson St
- Higueria St
- Robertson Blvd
- Culver City (Expo Line) M
- Ivy Station
- Bassett Home Furnishings
- Scandinavian Designs
- HD Buttercup
- Helms Bakery
- Rejuvenation
- Father's Office
- Kohler Signature Store
- The Rug Warehouse
- Harbour Outdoor
- Vitra
- Voganl
- Room & Board
- Lukshon
- La Dijonaise Cafe
- Arcana
- Books on the Arts
- Pinches Tacos
- Soz's
- El Baron
- Castiglioni
- Vision LA
- Procola Co
- Envy
- Fay Ave
- Rostes
- Max Leather Inc
- McManus Ave
- Business Consumer Alliance
- EK Valley Restaurant
- Heart N Soul Gallery
- Prohibition Gallery
- Industry Cafe & Jazz
- Sixty39 Contemporary
- Knowlden Mann Gallery
- Thinkspace Gallery
- Brunello Tratoria
- Dogwood Daycare & Boarding
- Arts District
- LA Cienega Ave
- North

WASHINGTON/NATIONAL

- Rapt Studio LA
- 95.5 KLOS
- MPC
- Baked FX
- CitiSpace Club
- Tundo Baby
- Velvet
- Servicon Systems Inc
- Function Drinks
- IDCSERVCO Supply Center
- Turning Point School
- Morphosis Architects
- Bank of the West Access Culver City
- Co-opportunity Market & Deli
- Rony's Car Pros
- M Bird Studio
- New School of Cooking + Cafe
- The Sliding Door Company
- My Little Sunshine
- CAROLINE AVE
- Haley Miranda Group
- Magic Ink Company
- Element 29
- Midland
- SHERBOURNE DR
- Uncle Sam's Distributing
- Hi-Lo Liquor Market
- CATTARAUGUS AVE
- Gregory Davis & Associates Landscaping
- Taligale Tavern
- India's Healthy Living Studios
- Jacob St
- Reid Ave
- End Cue
- Tuesday's Child
- Strand & Garden
- The Compound Season
- The Compound Season
- Regional Investment and Management
- Clive Wilkinson Architects
- Cognoscenti Coffee
- Create Advertising Group
- SENTNEY AVE
- Suzanne Vimmerter
- Los Angeles Projects
- Brumello Tratoria
- WASHINGTON BLVD
- National Blvd
- Helms Ave
- Wesley St
- Schaefer St
- Nike
- ONE/x
- DigitalFusion
- Tennis Channel
- Hayden Studios
- Sink Studios
- Your Neighborhood Studio
- Vespertine
- Destroyer
- Barts Carts and The Margarita Man
- Omelet
- POPSUGAR, Inc.
- Jam City
- JBest Fabrics Store
- Zolt Studios
- Southern California Graphic
- 3Labs
- JASON Natural Products
- Pacific Piston Ring
- SteelHouse
- CrownPeak
- BARABOOM! Studios
- Magento Inc.
- Dattile Sales Service Center
- Worldpac
- Horman Miller
- Target
- McDonald's
- Chinese Laundry Shoes
- See's Candies
- Public Storage
- UNIFY Financial Credit Union
- Praedicat
- ZEHNER
- Alpha Productions Inc
- WeWork Culver City
- Future Home
- Julien's Auctions
- The Mill
- West LA Engine, Inc.
- Seismic Games
- Sydn Kronenthal Park
- W Jefferson Blvd
- Jefferson Blvd
- Baldwin Hills
- Opportunity Zone
- LA Cienega Blvd
- LA Cienega/Jefferson M

HAIDEN TRACT

- Nordstrom HQ
- The Fit Lab
- Brilliant Transportation
- Cunningham Group
- Hell's Kitchen
- Bavarian Breweries & Distilleries
- JAG Gym
- US Air Conditioning Distributors
- Trulove Post
- The Counter Home Office
- Eric Owen Moss Architects
- Smashbox Studios
- Willows Community School
- Alena
- Inner Gardens
- Hayden Tract Parking
- Warner Dr
- JASON Natural Products
- Pacific Piston Ring
- SteelHouse
- CrownPeak
- BARABOOM! Studios
- Magento Inc.
- Dattile Sales Service Center
- Worldpac
- Horman Miller
- Target
- McDonald's
- Chinese Laundry Shoes
- See's Candies
- Public Storage
- UNIFY Financial Credit Union
- Praedicat
- ZEHNER
- Alpha Productions Inc
- WeWork Culver City
- Future Home
- Julien's Auctions
- The Mill
- West LA Engine, Inc.
- Seismic Games
- Sydn Kronenthal Park
- W Jefferson Blvd
- Jefferson Blvd
- Baldwin Hills
- Opportunity Zone
- LA Cienega Blvd
- LA Cienega/Jefferson M

JEFFERSON CREATIVE OFFICE CORRIDOR

- Nordstrom HQ
- The Fit Lab
- Brilliant Transportation
- Cunningham Group
- Hell's Kitchen
- Bavarian Breweries & Distilleries
- JAG Gym
- US Air Conditioning Distributors
- Trulove Post
- The Counter Home Office
- Eric Owen Moss Architects
- Smashbox Studios
- Willows Community School
- Alena
- Inner Gardens
- Hayden Tract Parking
- Warner Dr
- JASON Natural Products
- Pacific Piston Ring
- SteelHouse
- CrownPeak
- BARABOOM! Studios
- Magento Inc.
- Dattile Sales Service Center
- Worldpac
- Horman Miller
- Target
- McDonald's
- Chinese Laundry Shoes
- See's Candies
- Public Storage
- UNIFY Financial Credit Union
- Praedicat
- ZEHNER
- Alpha Productions Inc
- WeWork Culver City
- Future Home
- Julien's Auctions
- The Mill
- West LA Engine, Inc.
- Seismic Games
- Sydn Kronenthal Park
- W Jefferson Blvd
- Jefferson Blvd
- Baldwin Hills
- Opportunity Zone
- LA Cienega Blvd
- LA Cienega/Jefferson M

EASTHAM WARNER DESIGN CENTER

- Nordstrom HQ
- The Fit Lab
- Brilliant Transportation
- Cunningham Group
- Hell's Kitchen
- Bavarian Breweries & Distilleries
- JAG Gym
- US Air Conditioning Distributors
- Trulove Post
- The Counter Home Office
- Eric Owen Moss Architects
- Smashbox Studios
- Willows Community School
- Alena
- Inner Gardens
- Hayden Tract Parking
- Warner Dr
- JASON Natural Products
- Pacific Piston Ring
- SteelHouse
- CrownPeak
- BARABOOM! Studios
- Magento Inc.
- Dattile Sales Service Center
- Worldpac
- Horman Miller
- Target
- McDonald's
- Chinese Laundry Shoes
- See's Candies
- Public Storage
- UNIFY Financial Credit Union
- Praedicat
- ZEHNER
- Alpha Productions Inc
- WeWork Culver City
- Future Home
- Julien's Auctions
- The Mill
- West LA Engine, Inc.
- Seismic Games
- Sydn Kronenthal Park
- W Jefferson Blvd
- Jefferson Blvd
- Baldwin Hills
- Opportunity Zone
- LA Cienega Blvd
- LA Cienega/Jefferson M

JEFFERSON CREATIVE OFFICE CORRIDOR

- Nordstrom HQ
- The Fit Lab
- Brilliant Transportation
- Cunningham Group
- Hell's Kitchen
- Bavarian Breweries & Distilleries
- JAG Gym
- US Air Conditioning Distributors
- Trulove Post
- The Counter Home Office
- Eric Owen Moss Architects
- Smashbox Studios
- Willows Community School
- Alena
- Inner Gardens
- Hayden Tract Parking
- Warner Dr
- JASON Natural Products
- Pacific Piston Ring
- SteelHouse
- CrownPeak
- BARABOOM! Studios
- Magento Inc.
- Dattile Sales Service Center
- Worldpac
- Horman Miller
- Target
- McDonald's
- Chinese Laundry Shoes
- See's Candies
- Public Storage
- UNIFY Financial Credit Union
- Praedicat
- ZEHNER
- Alpha Productions Inc
- WeWork Culver City
- Future Home
- Julien's Auctions
- The Mill
- West LA Engine, Inc.
- Seismic Games
- Sydn Kronenthal Park
- W Jefferson Blvd
- Jefferson Blvd
- Baldwin Hills
- Opportunity Zone
- LA Cienega Blvd
- LA Cienega/Jefferson M

JEFFERSON CREATIVE OFFICE CORRIDOR

- Nordstrom HQ
- The Fit Lab
- Brilliant Transportation
- Cunningham Group
- Hell's Kitchen
- Bavarian Breweries & Distilleries
- JAG Gym
- US Air Conditioning Distributors
- Trulove Post
- The Counter Home Office
- Eric Owen Moss Architects
- Smashbox Studios
- Willows Community School
- Alena
- Inner Gardens
- Hayden Tract Parking
- Warner Dr
- JASON Natural Products
- Pacific Piston Ring
- SteelHouse
- CrownPeak
- BARABOOM! Studios
- Magento Inc.
- Dattile Sales Service Center
- Worldpac
- Horman Miller
- Target
- McDonald's
- Chinese Laundry Shoes
- See's Candies
- Public Storage
- UNIFY Financial Credit Union
- Praedicat
- ZEHNER
- Alpha Productions Inc
- WeWork Culver City
- Future Home
- Julien's Auctions
- The Mill
- West LA Engine, Inc.
- Seismic Games
- Sydn Kronenthal Park
- W Jefferson Blvd
- Jefferson Blvd
- Baldwin Hills
- Opportunity Zone
- LA Cienega Blvd
- LA Cienega/Jefferson M

JEFFERSON CREATIVE OFFICE CORRIDOR

- Nordstrom HQ
- The Fit Lab
- Brilliant Transportation
- Cunningham Group
- Hell's Kitchen
- Bavarian Breweries & Distilleries
- JAG Gym
- US Air Conditioning Distributors
- Trulove Post
- The Counter Home Office
- Eric Owen Moss Architects
- Smashbox Studios
- Willows Community School
- Alena
- Inner Gardens
- Hayden Tract Parking
- Warner Dr
- JASON Natural Products
- Pacific Piston Ring
- SteelHouse
- CrownPeak
- BARABOOM! Studios
- Magento Inc.
- Dattile Sales Service Center
- Worldpac
- Horman Miller
- Target
- McDonald's
- Chinese Laundry Shoes
- See's Candies
- Public Storage
- UNIFY Financial Credit Union
- Praedicat
- ZEHNER
- Alpha Productions Inc
- WeWork Culver City
- Future Home
- Julien's Auctions
- The Mill
- West LA Engine, Inc.
- Seismic Games
- Sydn Kronenthal Park
- W Jefferson Blvd
- Jefferson Blvd
- Baldwin Hills
- Opportunity Zone
- LA Cienega Blvd
- LA Cienega/Jefferson M

JEFFERSON CREATIVE OFFICE CORRIDOR

- Nordstrom HQ
- The Fit Lab
- Brilliant Transportation
- Cunningham Group
- Hell's Kitchen
- Bavarian Breweries & Distilleries
- JAG Gym
- US Air Conditioning Distributors
- Trulove Post
- The Counter Home Office
- Eric Owen Moss Architects
- Smashbox Studios
- Willows Community School
- Alena
- Inner Gardens
- Hayden Tract Parking
- Warner Dr
- JASON Natural Products
- Pacific Piston Ring
- SteelHouse
- CrownPeak
- BARABOOM! Studios
- Magento Inc.
- Dattile Sales Service Center
- Worldpac
- Horman Miller
- Target
- McDonald's
- Chinese Laundry Shoes
- See's Candies
- Public Storage
- UNIFY Financial Credit Union
- Praedicat
- ZEHNER
- Alpha Productions Inc
- WeWork Culver City
- Future Home
- Julien's Auctions
- The Mill
- West LA Engine, Inc.
- Seismic Games
- Sydn Kronenthal Park
- W Jefferson Blvd
- Jefferson Blvd
- Baldwin Hills
- Opportunity Zone
- LA Cienega Blvd
- LA Cienega/Jefferson M

JEFFERSON CREATIVE OFFICE CORRIDOR

- Nordstrom HQ
- The Fit Lab
- Brilliant Transportation
- Cunningham Group
- Hell's Kitchen
- Bavarian Breweries & Distilleries
- JAG Gym
- US Air Conditioning Distributors
- Trulove Post
- The Counter Home Office
- Eric Owen Moss Architects
- Smashbox Studios
- Willows Community School
- Alena
- Inner Gardens
- Hayden Tract Parking
- Warner Dr
- JASON Natural Products
- Pacific Piston Ring
- SteelHouse
- CrownPeak
- BARABOOM! Studios
- Magento Inc.
- Dattile Sales Service Center
- Worldpac
- Horman Miller
- Target
- McDonald's
- Chinese Laundry Shoes
- See's Candies
- Public Storage
- UNIFY Financial Credit Union
- Praedicat
- ZEHNER
- Alpha Productions Inc
- WeWork Culver City
- Future Home
- Julien's Auctions
- The Mill
- West LA Engine, Inc.
- Seismic Games
- Sydn Kronenthal Park
- W Jefferson Blvd
- Jefferson Blvd
- Baldwin Hills
- Opportunity Zone
- LA Cienega Blvd
- LA Cienega/Jefferson M

- Dining & Nightlife
 - Shopping & Services
- Metro Expo Line M

ARCHITECTURAL | CREATIVE BUILDING

FOR LEASE

UNIT 3617 | 3619 | 8437 | 8441
CULVER CITY | CA

eastham
warner

FOR MORE INFORMATION, CONTACT:

DAVID FREITAG

P: 213.270.2235 | M: 310.413.9390
dfreitag@daumcre.com
CA License #00855673

IMANI MCMILLAN

P: 213.270.2230 | M: 310.800.4589
imcmillan@daumcre.com
CA License #02057115

Although all information is furnished regarding for sale, rental or financing is from sources deemed reliable, such information has not been verified and no express representation is made nor is any to be implied as to the accuracy thereof, and it is submitted subject to errors, omissions, changes of price, rental or other conditions, prior sale, lease or financing, or withdrawal without notice. D/AQ Corp. # 01129558

DAUM
COMMERCIAL REAL ESTATE SERVICES