

Free-Standing Building For Lease

Property Summary

Well positioned former Rite Aid on a hard corner in the opportunistic and fast growing city of Sulphur. This site offers excellent access and visibility and an abundance of parking. This is a great opportunity for a local/regional/national tenant for retail/office/MOB use.

Available

- 11,000 SF

Price

- \$7.50 SF

Traffic Counts (ADT 2016)

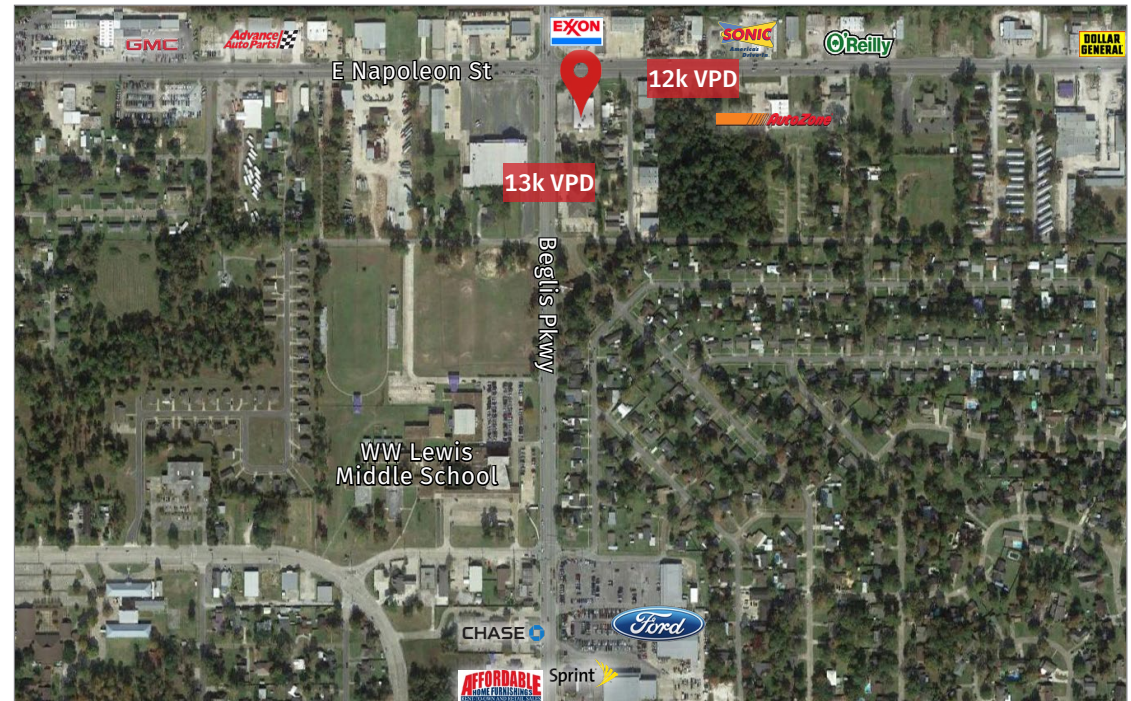
- E Napoleon St: 12k VPD
- Belgis Pkwy: 13k VPD

2020 Demographics

	1 mi.	3 mi.	5 mi.
Population	5,971	25,336	32,633
Avg. HH Income	\$55,564	\$63,428	\$66,905

Area Businesses

- Sonic
- AutoZone
- O'Reilly
- Advanced Auto Parts
- Dollar General



Seth Citron

Office: 337-234-4481

Direct: 337-572-0273

scitron@stirlingprop.com

Former Rite Aid

1601 East Napoleon Street, Sulphur, LA

