

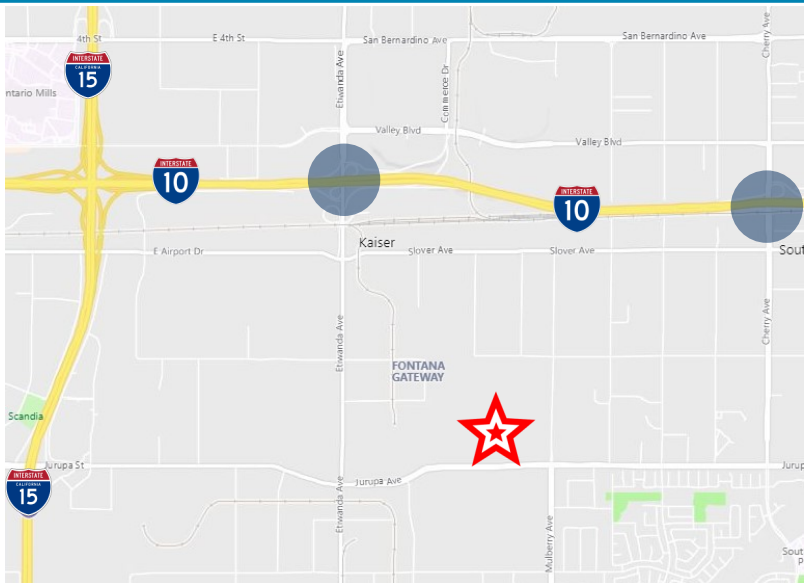
AVAILABLE ±2.75 ACRES

13804-13814 JURUPA AVE | FONTANA, CA



PROPERTY FEATURES

- ±2.75 Acres
- ±1,700 SF Office Space
- ±2,175 Service Building
- Partially Paved
- Fully Secured Yard
- APN: 0236-151-117 & 18
- Located Within Fontana's SWIP - JND Zoning
- Immediate Access to I-10 Via Cherry Avenue



CONTACT:

JOSEPH PAREDES | Vice President
Office: 909.652.9054 | Cell: 949.566.5186
jparedes@daumcommercial.com
CA License #01895260

DAUM
COMMERCIAL REAL ESTATE SERVICES
www.daumcommercial.com

D/AQ Corp #01129558. Maps Courtesy ©Google & ©Microsoft. Although all information is furnished regarding for sale, rental or financing is from sourced deemed reliable, such information has not been verified and no express representation is made nor is any to be implied as to the accuracy thereof, and it is submitted subject to errors, omissions, changes of price, rental or other conditions, prior sale, lease or financing or withdrawal without notice.

ONCOR INTERNATIONAL

AVAILABLE ±2.75 ACRES

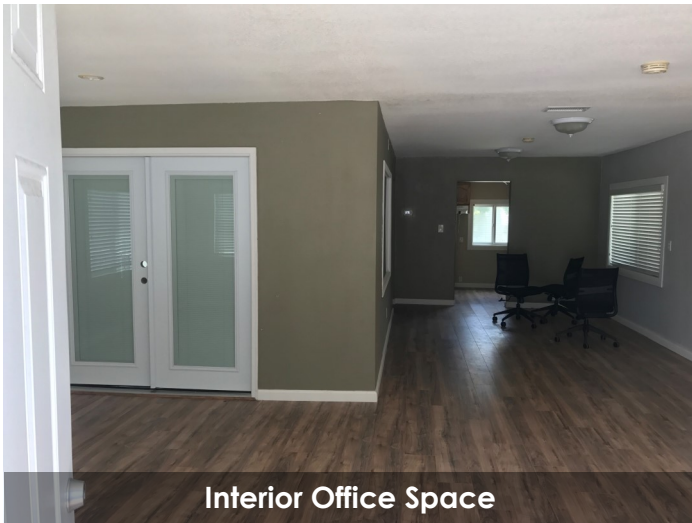
13804-13814 JURUPA AVE | FONTANA, CA



Office Building



Exterior Space



Interior Office Space



Interior Office Space



Service Building

CONTACT:

JOSEPH PAREDES | Vice President
Office: 909.652.9054 | **Cell: 949.566.5186**
jparedes@daumcommercial.com
CA License #01895260

DAUM
COMMERCIAL REAL ESTATE SERVICES
www.daumcommercial.com

D/AQ Corp #01129558. Maps Courtesy ©Google & ©Microsoft. Although all information is furnished regarding for sale, rental or financing is from sourced deemed reliable, such information has not been verified and no express representation is made nor is any to be implied as to the accuracy thereof, and it is submitted subject to errors, omissions, changes of price, rental or other conditions, prior sale, lease or financing or withdrawal without notice.

ONCOR INTERNATIONAL