

2100 William Few Parkway

2100 William Few Parkway Grovetown, GA 30813



JORDAN TROTTER

COMMERCIAL REAL ESTATE



2.5 Acres

Wil Kacos

Associate

706.818.6973 x112

wil@jordantrotter.com

FOR SALE | \$475,000

2.5 Acres

Land For Sale

2100 WILLIAM FEW PARKWAY



PROPERTY OVERVIEW

This 2.5 parcel of land has great commercial potential. Conveniently located at the corner of William Few Parkway and Baker Place Road. Several Columbia County Schools are located within close proximity to this property including Baker Place Elementary, Grovetown High School and Columbia Middle.

LOCATION OVERVIEW

Amazing commercial investment possibility! Nearly 2.5 Acres at the corner of William Few and Baker Place Road.

PROPERTY HIGHLIGHTS

- VPD- William Few Parkway = 8916
- Great location for Office, Convenience Store or other Retail

PROPERTY SUMMARY

Sale Price: \$475,000

Lot Size: 2.5 Acres

APN #: 050 010A

Zoning: Zoned Residential Agriculture, but could be rezoned Commercial

Cross Streets: Baker Place Road
William Few Parkway

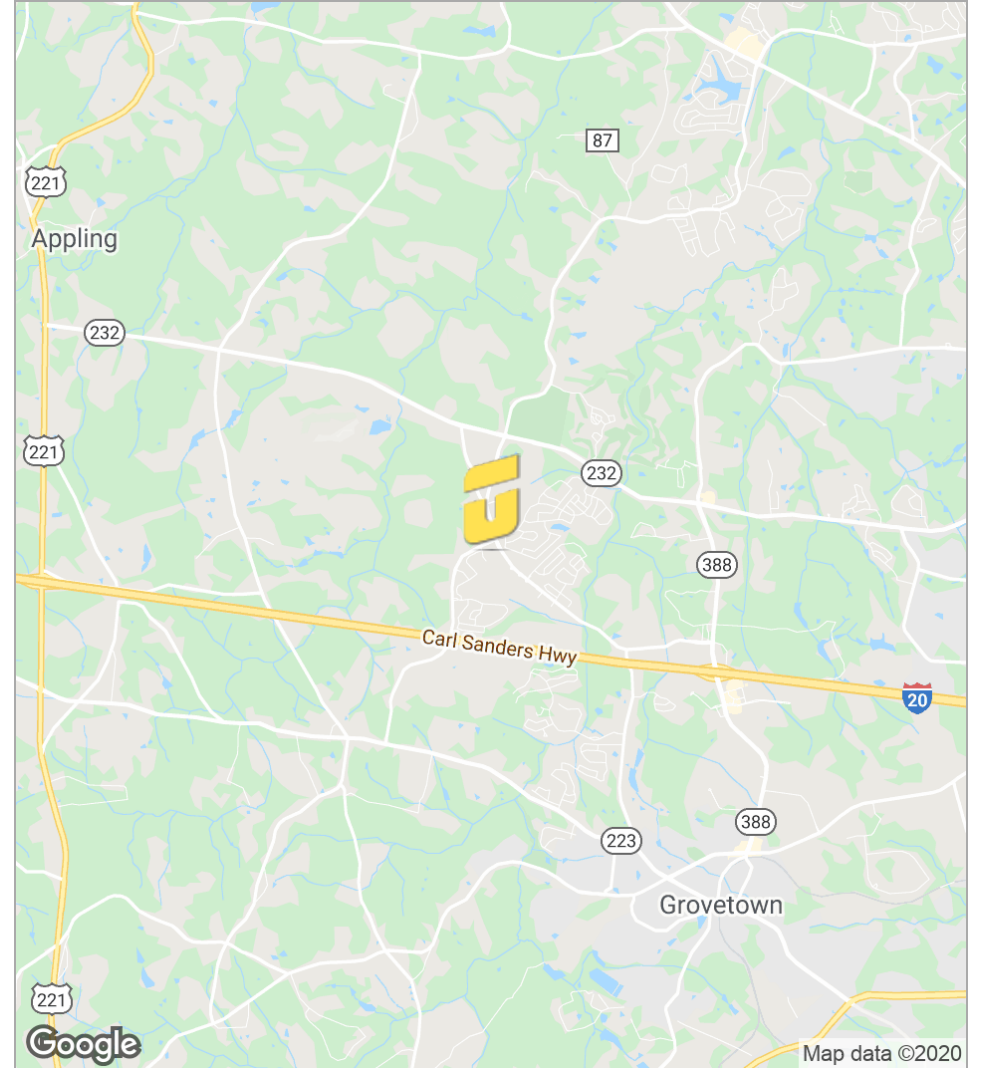
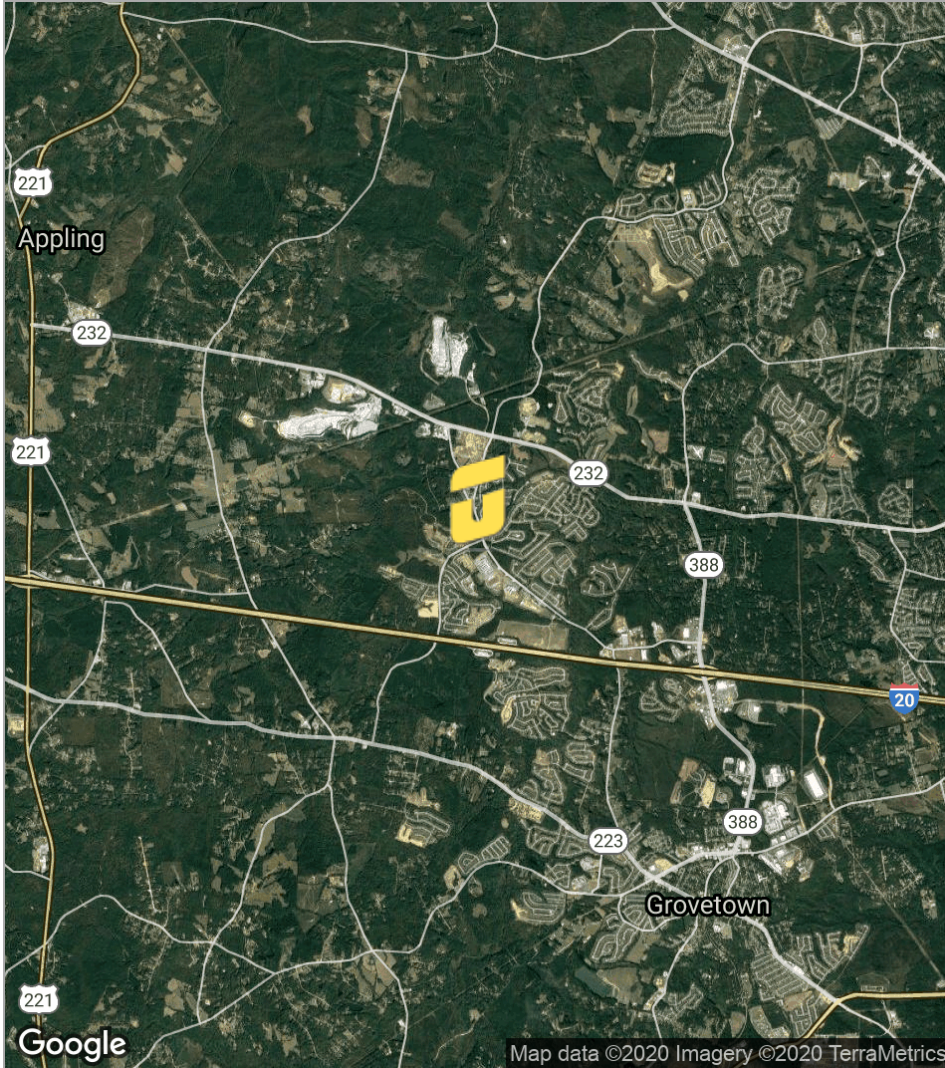
Land For Sale

2100 WILLIAM FEW PARKWAY



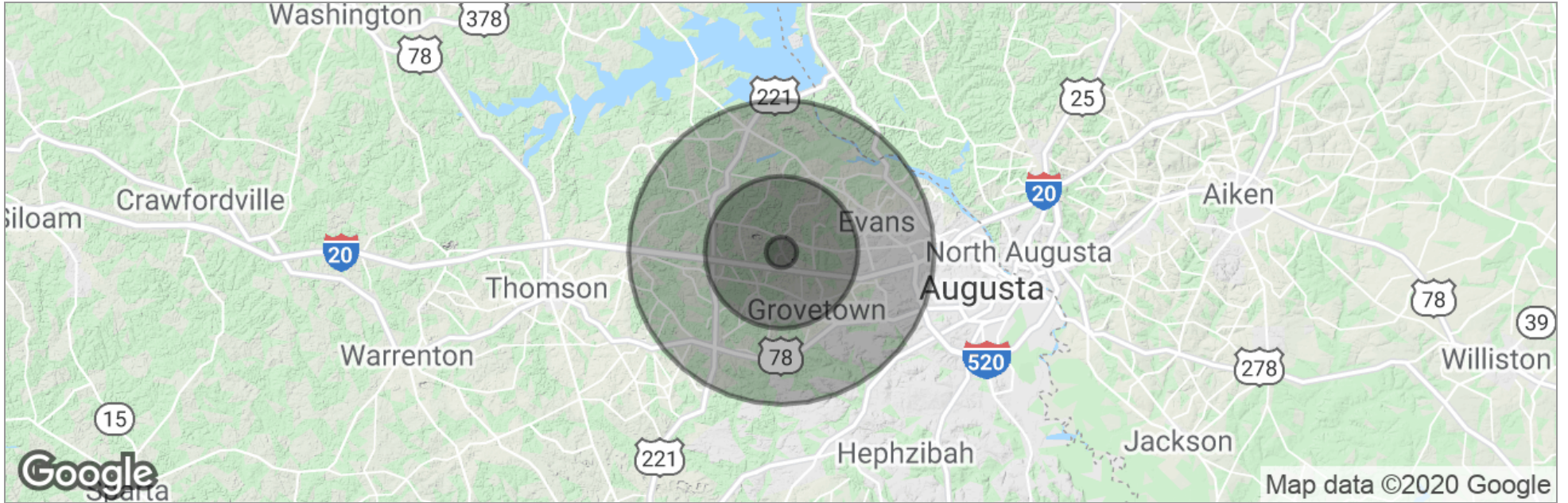
Land For Sale

2100 WILLIAM FEW PARKWAY



Land For Sale

2100 WILLIAM FEW PARKWAY



	1 Mile	5 Miles	10 Miles
Total Population	271	29,964	128,352
Population Density	86	382	409
Median Age	34.4	34.5	35.4
Median Age (Male)	34.4	34.1	34.7
Median Age (Female)	34.4	35.1	36.4
Total Households	93	10,733	44,905
# of Persons Per HH	2.9	2.8	2.9
Average HH Income	\$72,113	\$73,567	\$73,812
Average House Value	\$209,285	\$196,142	\$199,095

* Demographic data derived from 2010 US Census