

Large Land Tract Between Atomic Road & Storm Branch Road

430 Storm Branch Road Beech Island, SC 29842

130 ACRES

Aiken County

Wil Kacos
Associate
706.818.6973 x112
wil@jordantrotter.com



JORDAN TROTTER
COMMERCIAL REAL ESTATE

Land For Sale

LARGE LAND TRACT BETWEEN ATOMIC ROAD & STORM BRANCH ROAD



PROPERTY OVERVIEW

130 Acres perfect for residential development

LOCATION OVERVIEW

This large, 130 Acre land tract fronts Storm Branch Road on the North side and Atomic Road on the South. It is located in Aiken County in an area with easy access to the Jefferson Davis Highway and I-520.

PROPERTY HIGHLIGHTS

- 130 Acres
- Great area for residential development
- The addition of a sewer easement is in process

PROPERTY SUMMARY

Sale Price: \$1,625,000

Lot Size: 130.0 Acres

APN #: 024-14-07-002, 024-14-07-001,
024-18-01-001

Cross Streets: Atomic Road

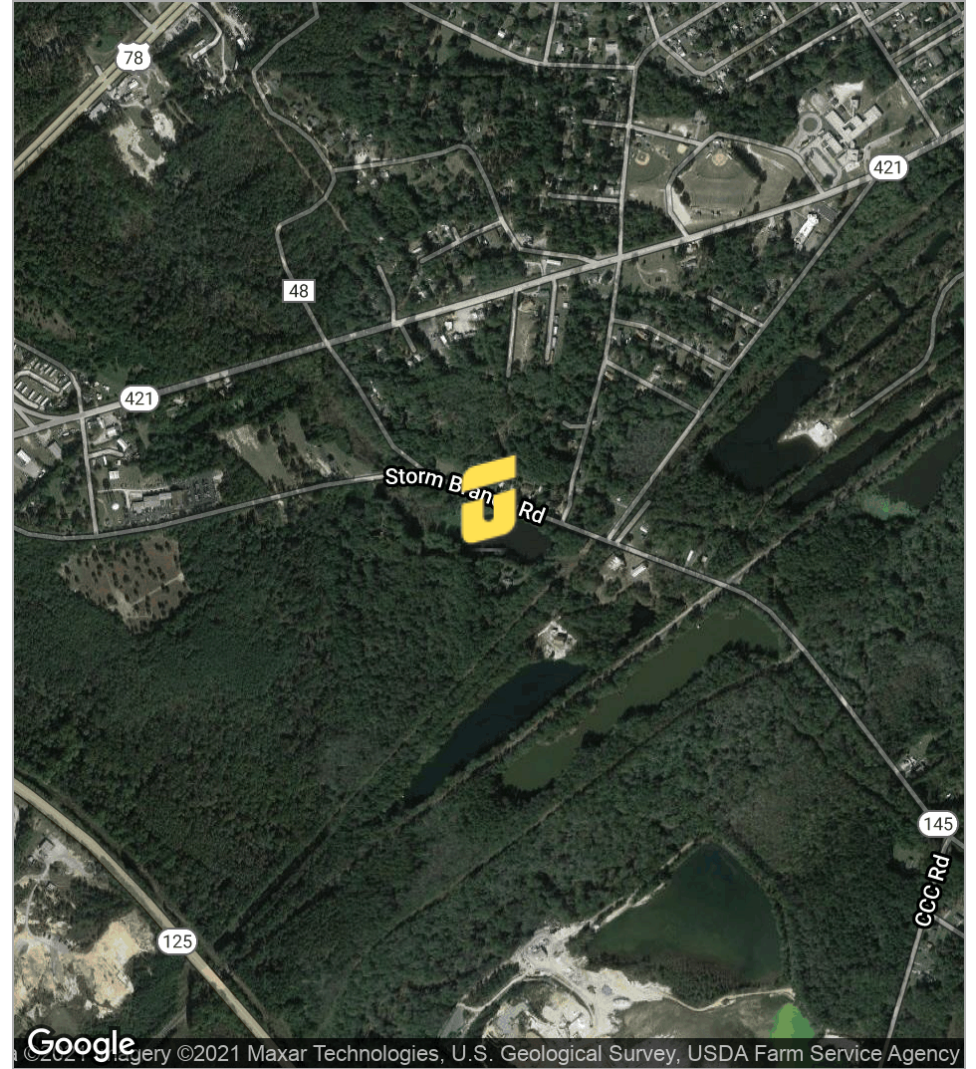
Land For Sale

LARGE LAND TRACT BETWEEN ATOMIC ROAD & STORM BRANCH ROAD



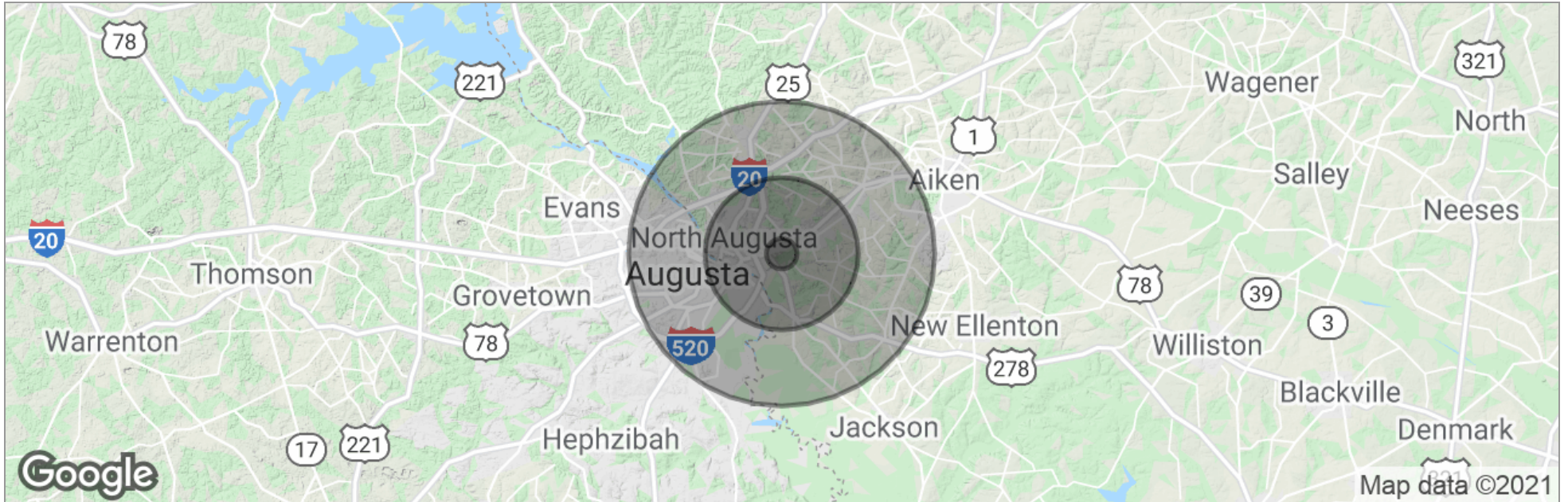
Land For Sale

LARGE LAND TRACT BETWEEN ATOMIC ROAD & STORM BRANCH ROAD



Land For Sale

LARGE LAND TRACT BETWEEN ATOMIC ROAD & STORM BRANCH ROAD



	1 Mile	5 Miles	10 Miles
Total Population	1,523	44,877	178,972
Population Density	485	571	570
Median Age	42.0	37.6	37.2
Median Age (Male)	39.0	35.3	35.8
Median Age (Female)	42.6	39.5	38.5
Total Households	592	18,222	73,592
# of Persons Per HH	2.6	2.5	2.4
Average HH Income	\$45,808	\$46,076	\$50,548
Average House Value	\$114,882	\$133,284	\$138,753

* Demographic data derived from 2010 US Census