

# 727 NORTHSIDE DRIVE EAST

STATESBORO, GA

31 ACRES

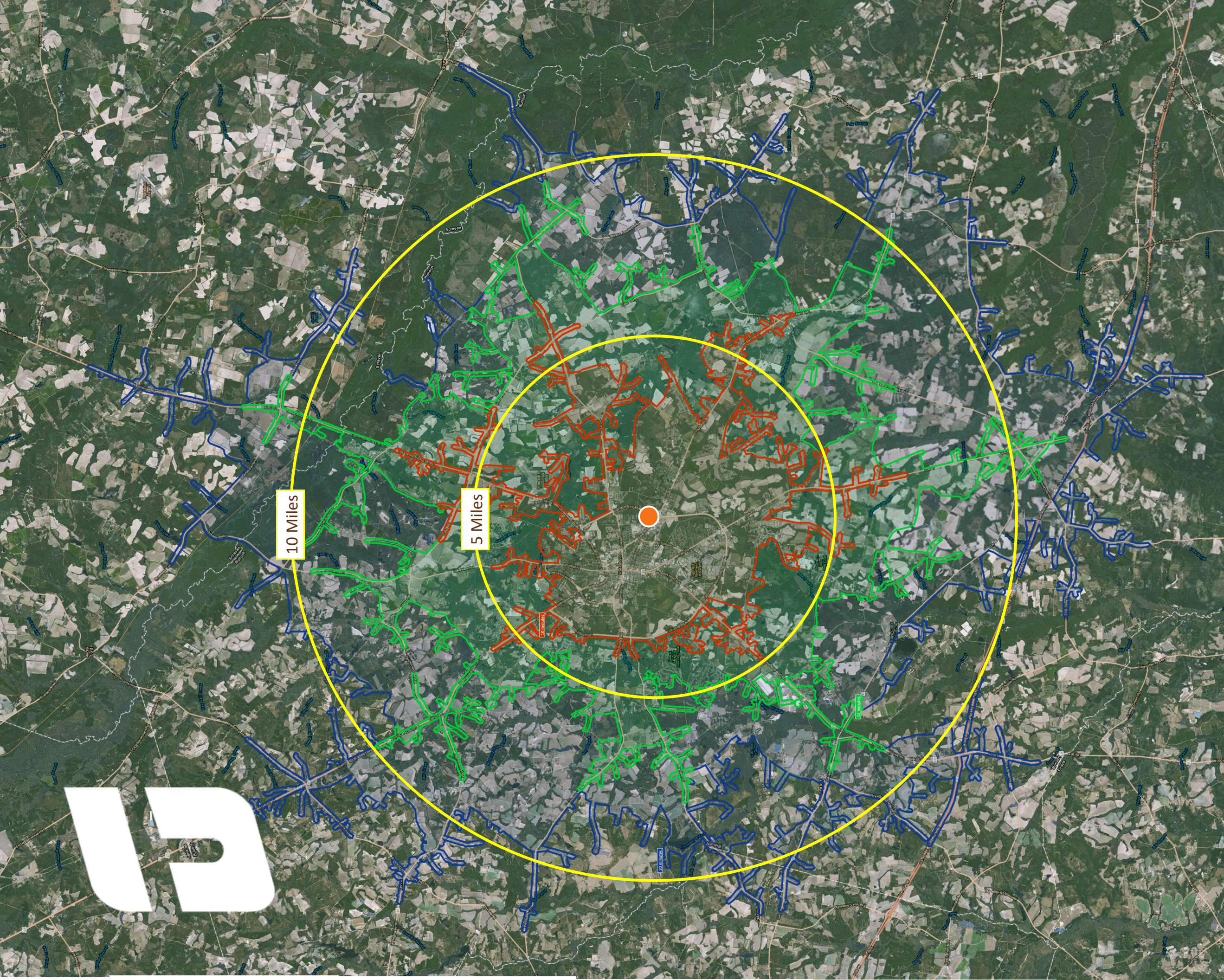
| AVAILABLE



Northside Drive <22,000 VPD>

Veterans Parkway <22,000 VPD>

**JORDAN TROTTER**  
COMMERCIAL REAL ESTATE



# Statesboro, GA

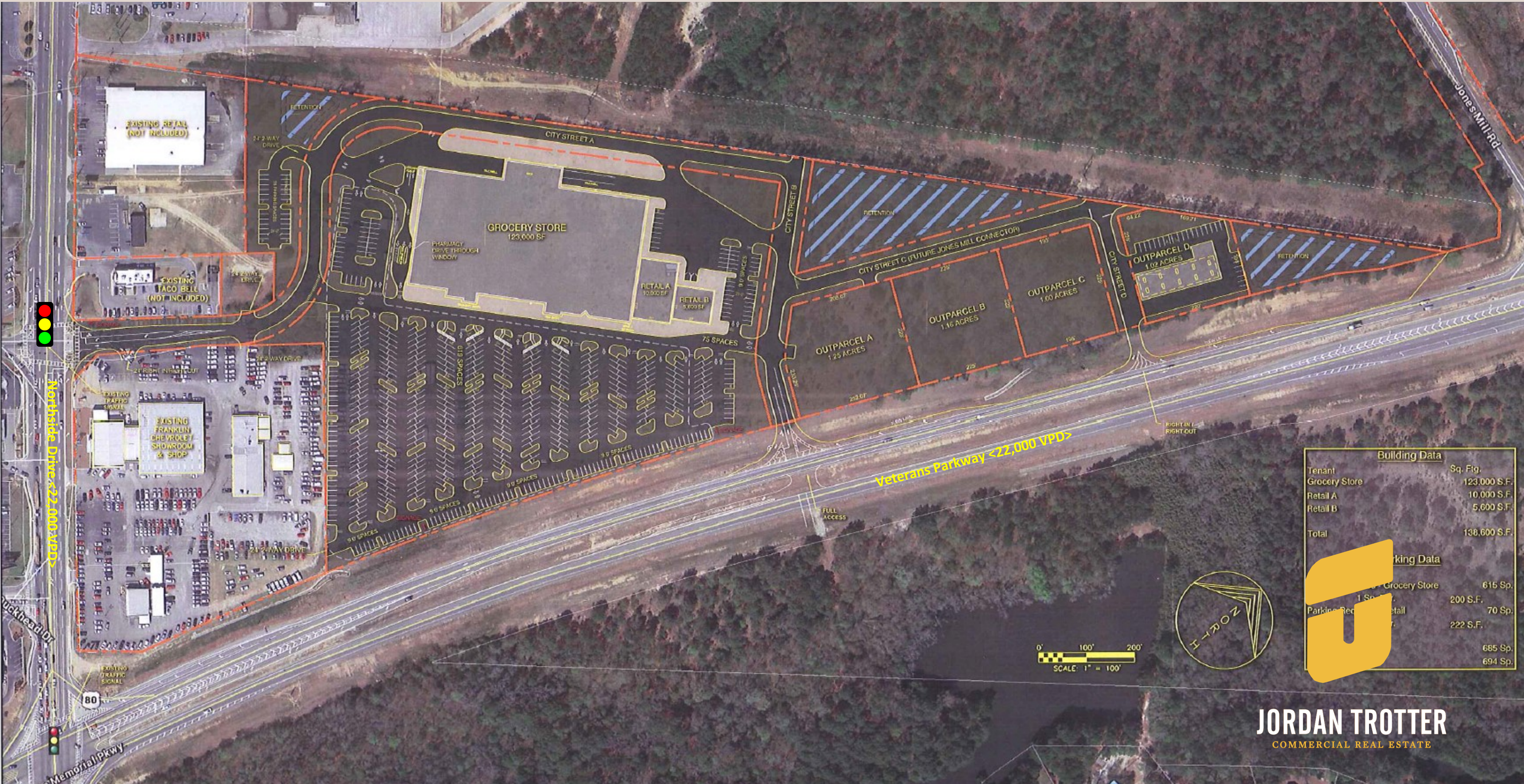
## Demographics

	Population	2015-2020 Annual Growth Rate
5 Mile Radius	<b>43,763</b>	<b>0.06%</b>
10 Mile Radius	<b>58,814</b>	<b>0.04%</b>

Drive times	Population
<b>10 Minutes</b>	<b>37,384</b>
<b>15 Minutes</b>	<b>50,228</b>
<b>20 Minutes</b>	<b>59,863</b>



**JORDAN TROTTER**  
COMMERCIAL REAL ESTATE



Building Data	
Tenant	Sq. Ft.
Grocery Store	123,000 S.F.
Retail A	10,000 S.F.
Retail B	5,000 S.F.
<b>Total</b>	<b>138,000 S.F.</b>

Parking Data	
Category	Count
Grocery Store	615 Sp.
Retail A	200 S.F.
Retail B	70 Sp.
<b>Total</b>	<b>685 Sp.</b>

**JORDAN TROTTER**  
COMMERCIAL REAL ESTATE