

For Sale

8,000± Sq. Ft. Commercial Building
2,200± to 4,750± Sq. Ft. Retail Available

Price Reduced
\$445,000.00



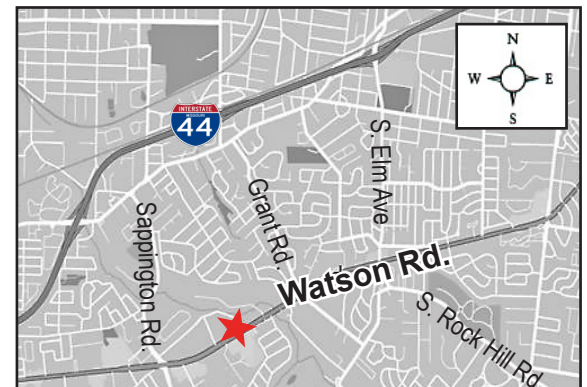
9420 Watson Road
Crestwood, MO 63126

Sale Price: ~~\$1,695,000.00~~

Reduced Sale Price: **1,250,000.00**

Contact: A. William Aschinger
waschinger@hillikercorp.com

- Two (2) Retail Bays Available
- High Ceilings
- Perfect for Retailer or Professional Office Users
- New 5 Year Lease Extension on Second Floor Dental Office



Office Industrial Retail Institutional Investment Management



Commercial Real Estate
1401 S. Brentwood Blvd.
Suite 650
St. Louis, MO 63144
www.hillikercorp.com

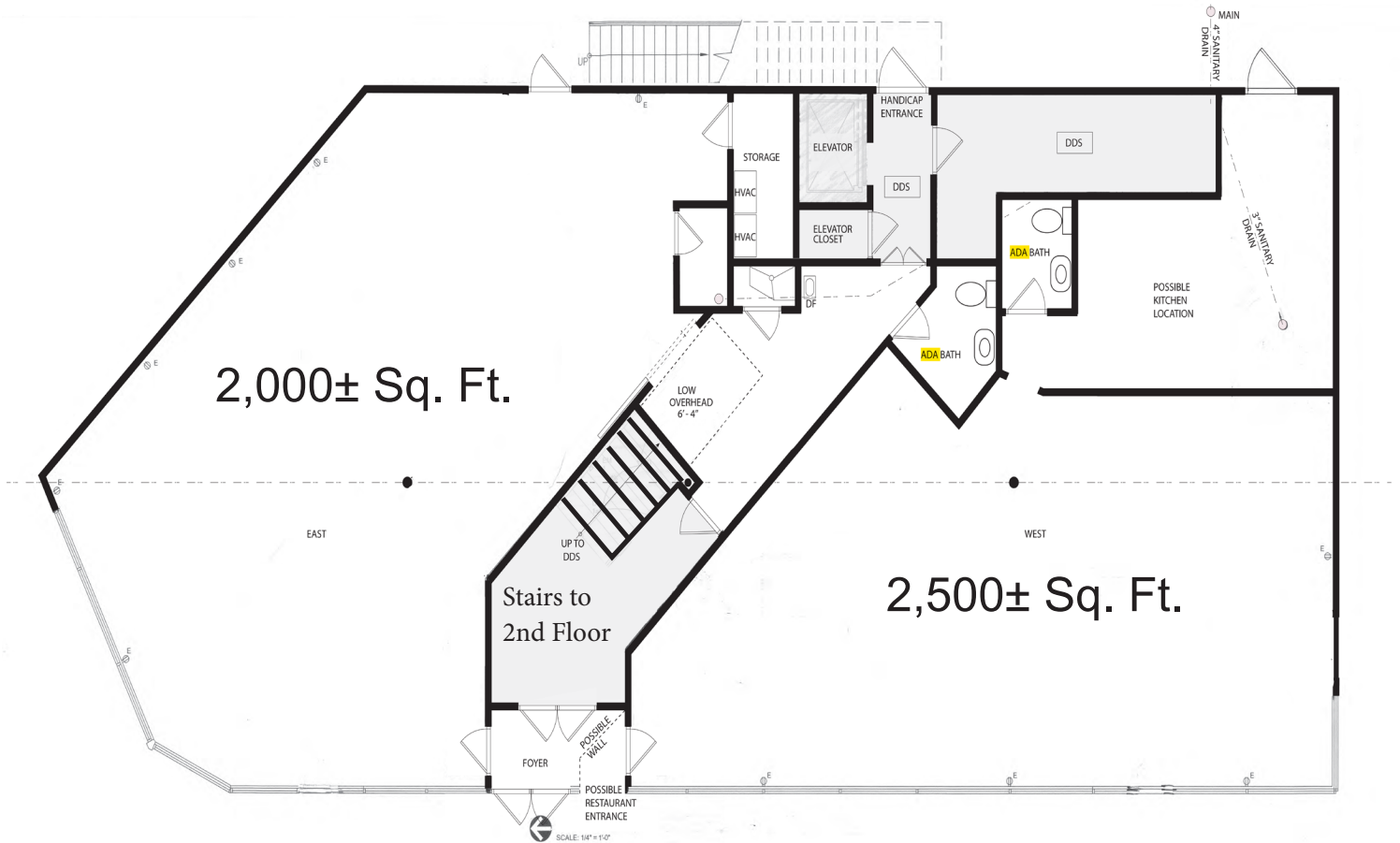
314 781 0001



Individual Membership in the Society
of Industrial and Office Realtors

Information is from appropriate sources but is not guaranteed. No representation is made to environmental or other conditions of property. We recommend purchaser investigate fully.

For Sale



Office Industrial Retail Institutional Investment Management



Commercial Real Estate
1401 S. Brentwood Blvd.
Suite 650
St. Louis, MO 63144
www.hillikercorp.com

314 781 0001



Individual Membership in the Society
of Industrial and Office Realtors

Information is from appropriate sources but is not guaranteed. No representation is made to environmental or other conditions of property. We recommend purchaser investigate fully.