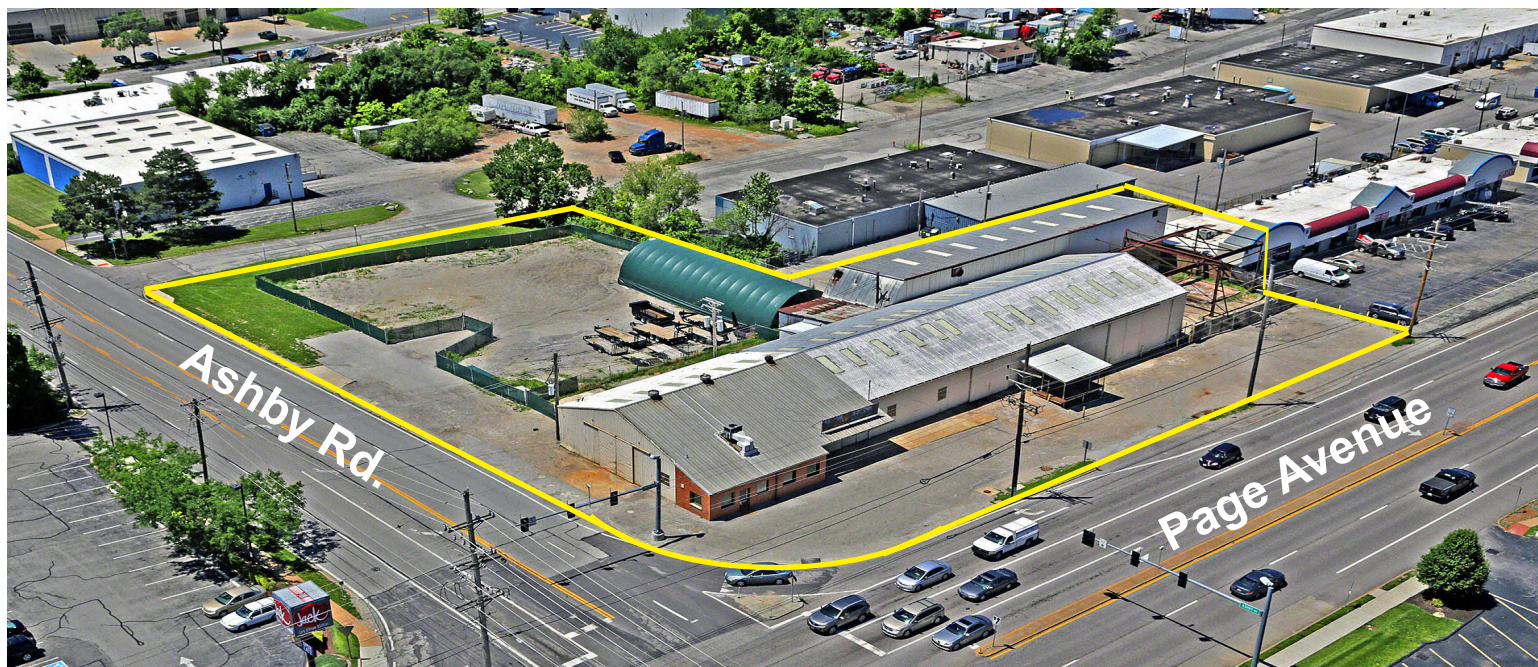


For Sale or Lease

Prime Redevelopment Site 1.8± Acres



10500 Page Avenue
St. Louis, MO 63132

Sale Price: \$1,150,000.00

Lease Rate: \$9,500/Month,NNN

Contact: Patrick T. McKay
ptmckay@hillikercorp.com

- **Great Hard Corner at Stoplight**
- **Unincorporated St. Louis County**
- **Zoned: Commercial C-7**
- **Perfect Location for Fast Food, Urgent Care, C-Store/Gas, Bank, Carwash or Other Retail Development**
- **270' of Page Ave. Frontage**
- **Possible 2-Tenant Site**



Office Industrial Retail Institutional Investment Management



Commercial Real Estate
1401 S. Brentwood Blvd.
Suite 650
St. Louis, MO 63144
www.hillikercorp.com

314 781 0001



Individual Membership in the Society
of Industrial and Office Realtors

Information is from appropriate sources but is not guaranteed. No representation is made to environmental or other conditions of property. We recommend purchaser investigate fully.