

GROUND LEASE NNN

BUILDING SIZE

- +/- 20,700 SF

LAND SIZE

- Approx. 1.295 Acres

PROPERTY DESCRIPTION

This prime Mid-City location is easily accessible from anywhere in the city and provides more than ample parking on a shared parking lot. The I-10 interchange, Costco Wholesale store and Xavier University, among other local landmarks, are all located within 3 blocks of this property.

TRAFFIC COUNT (ADT 2019)

- On South Carrollton Avenue, south of I-10: 52,506

NEARBY LANDMARKS

- Costco Wholesale
- Xavier University of Louisiana
- Five Happiness Chinese Restaurant
- IHOP
- McDonald's
- CVS
- Exxon



SUMMARY

RETAIL MAP

SITE PLAN

FLOOR PLAN

PHOTOS

DEMOGRAPHICS



SUMMARY

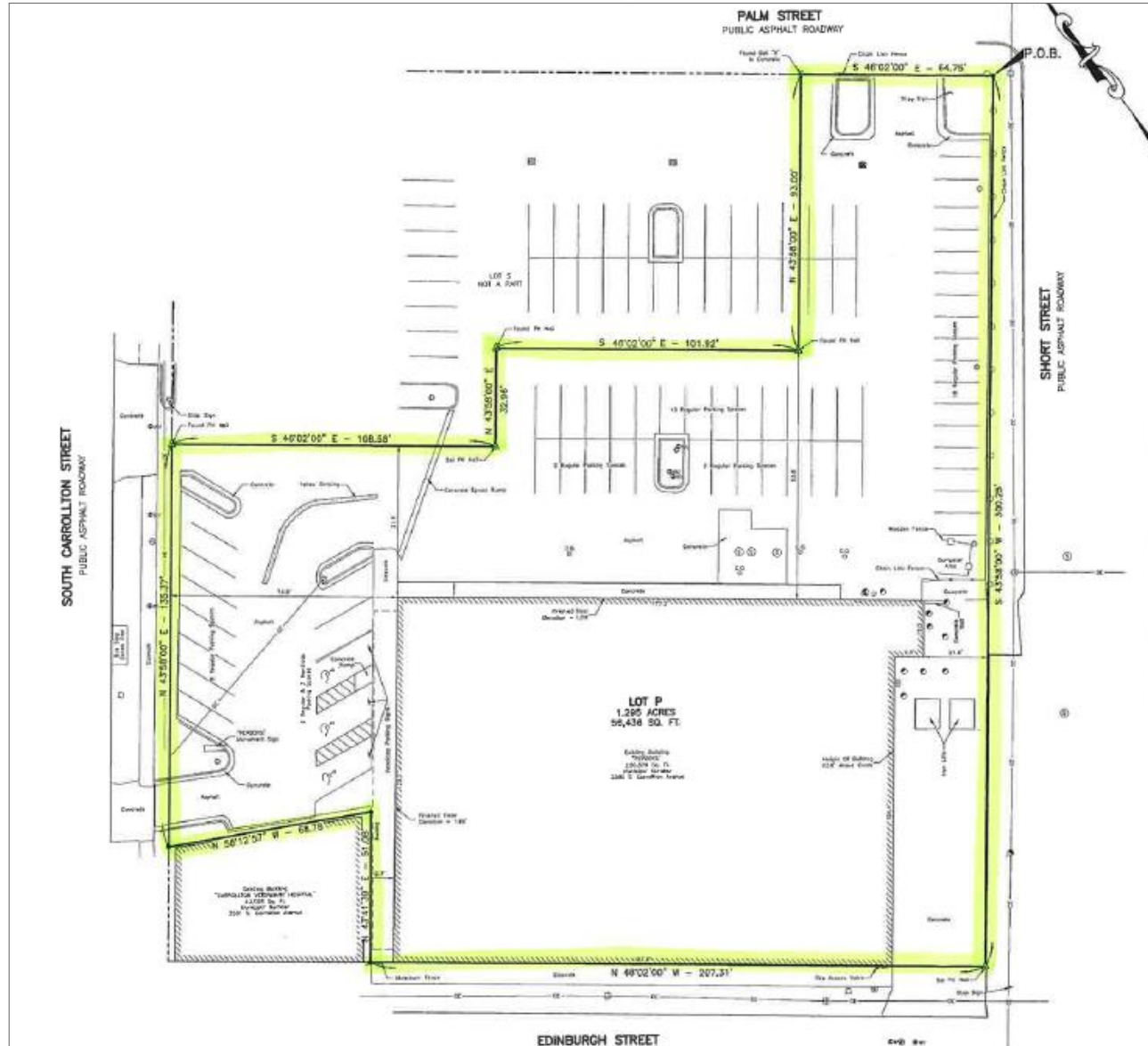
RETAIL MAP

SITE PLAN

FLOOR PLAN

PHOTOS

DEMOGRAPHICS



SUMMARY

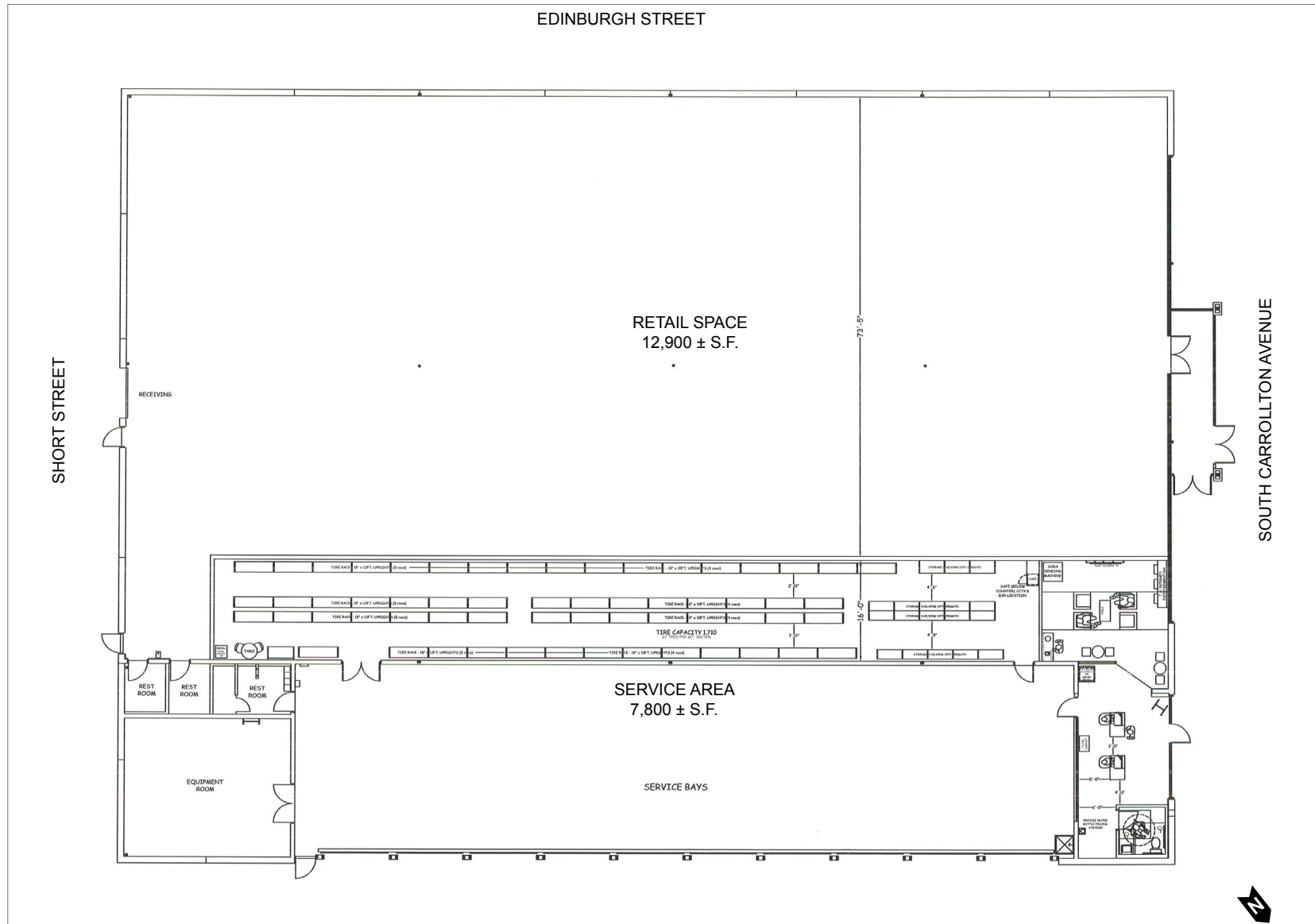
RETAIL MAP

SITE PLAN

FLOOR PLAN

PHOTOS

DEMOGRAPHICS



SUMMARY

RETAIL MAP

SITE PLAN

FLOOR PLAN

PHOTOS

DEMOGRAPHICS



SUMMARY

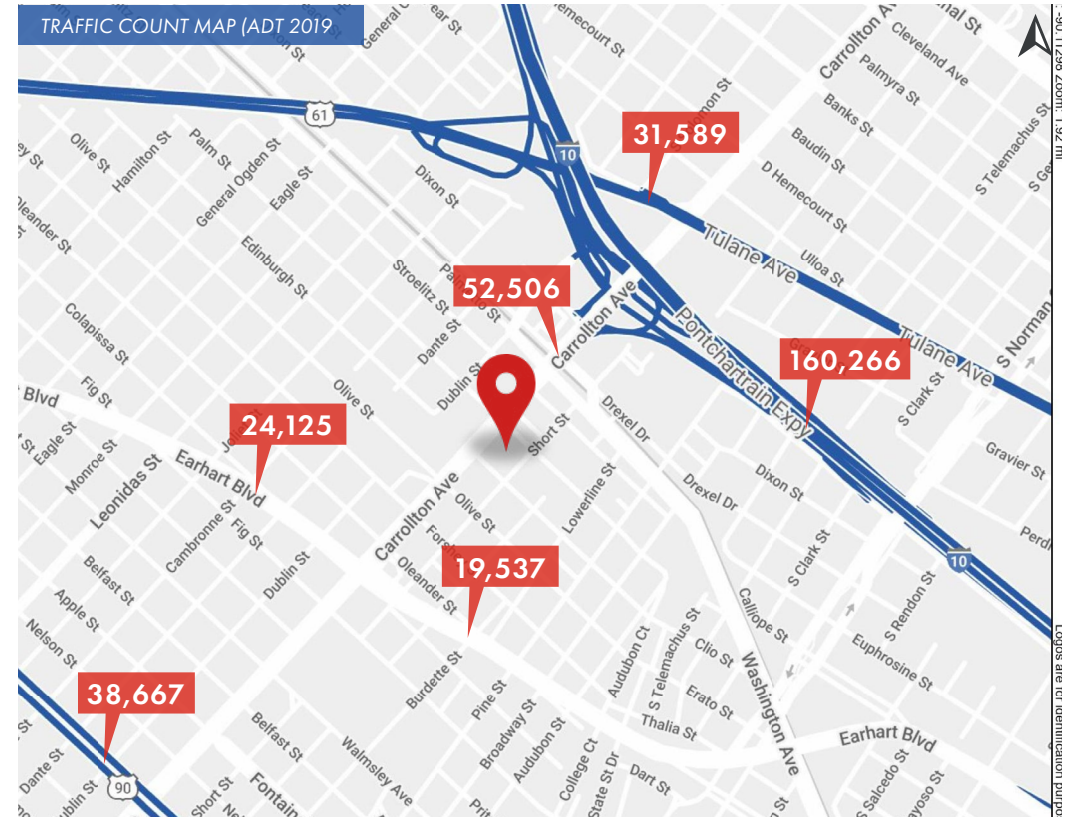
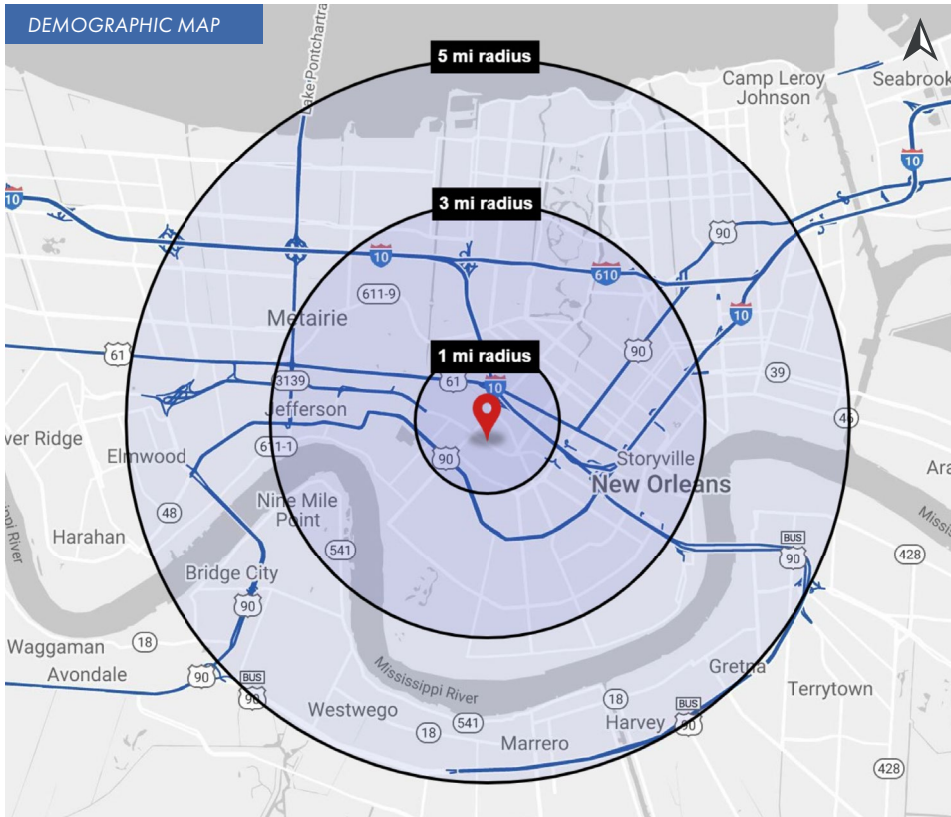
RETAIL MAP

SITE PLAN

FLOOR PLAN

PHOTOS

DEMOGRAPHICS



2020 DEMOGRAPHICS

	1 MILE	3 MILE	5 MILE	1 MILE	3 MILE	5 MILE	1 MILE	3 MILE	5 MILE		
POPULATION	26,678	181,869	379,518	AVG. HH INCOME	\$68,844	\$93,941	\$85,749	HOUSEHOLDS	9,916	75,255	160,018