

AVAILABLE

PROPERTY DESCRIPTION

This site on Airline Highway is directly adjoining Ochsner's new Emergency Department & Imaging Clinic and a new Aldi grocery store (coming soon), just west of a Winn-Dixie, and across Belle Terre Boulevard from a Walmart-anchored shopping center. This node is the primary commercial destination for all of St. John the Baptist Parish.

NEARBY LANDMARKS

- Aldi (Coming Soon!)
- Ochsner Emergency Department & Imaging Clinic
- Winn-Dixie
- Walmart Supercenter
- River Parish Hospital
- Matherne's Market
- St. John Parish Government Offices
- Several Elementary and High Schools

LAND SIZE

- 5.818 Acres

TRAFFIC COUNT (ADT 2019)

- On West Airline Highway, east of Belle Terre Boulevard:
39,049



OVERVIEW

RETAIL AERIAL

MAPS

SURVEY

DEMOGRAPHICS



Riverlands Shopping Center
 MATHERNE'S
 DOLLAR TREE
 PETSMART
 SHOE SHOW
 CITITRENDS rue21
 Rainbow GNC
 Acadiana Cinemas 5

Laplace Center
 Food 4 Less
 Firestone
 SOUTHERN STYLZ
 DOLLAR GENERAL
 FAMILY DOLLAR

Belle Terre Plaza
 FRENCH RIVIERA FITNESS
 FAIR GROUNDS
 SALLY BEAUTY
 Pizza Hut
 CAFO
 Rent-A-Center
 GameStop
 PJS COFFEE
 WONDER CUTS

IHOP
 UNITED STATES POSTAL SERVICE

5.818 ACRES

ALDI
 Coming Soon

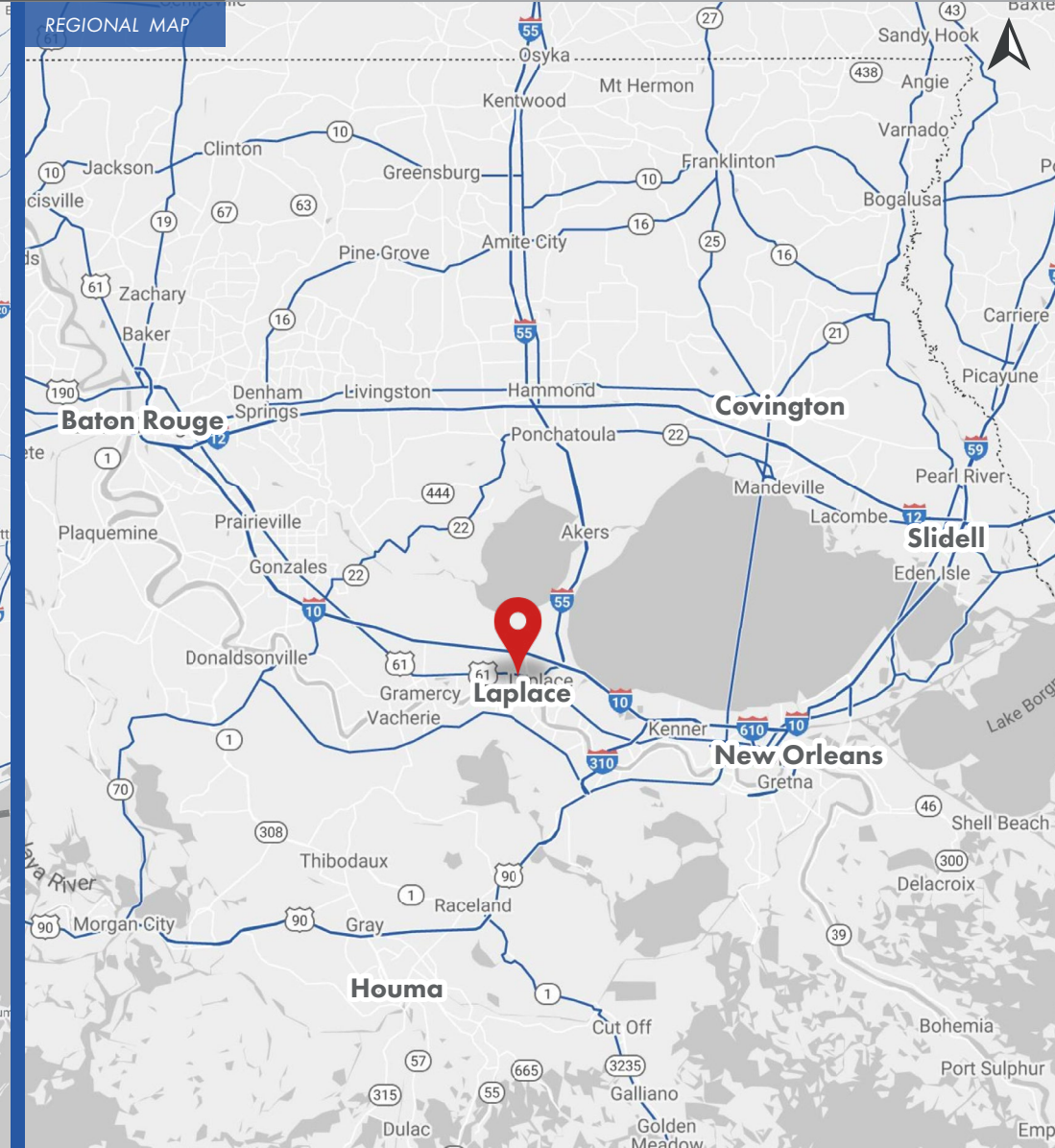
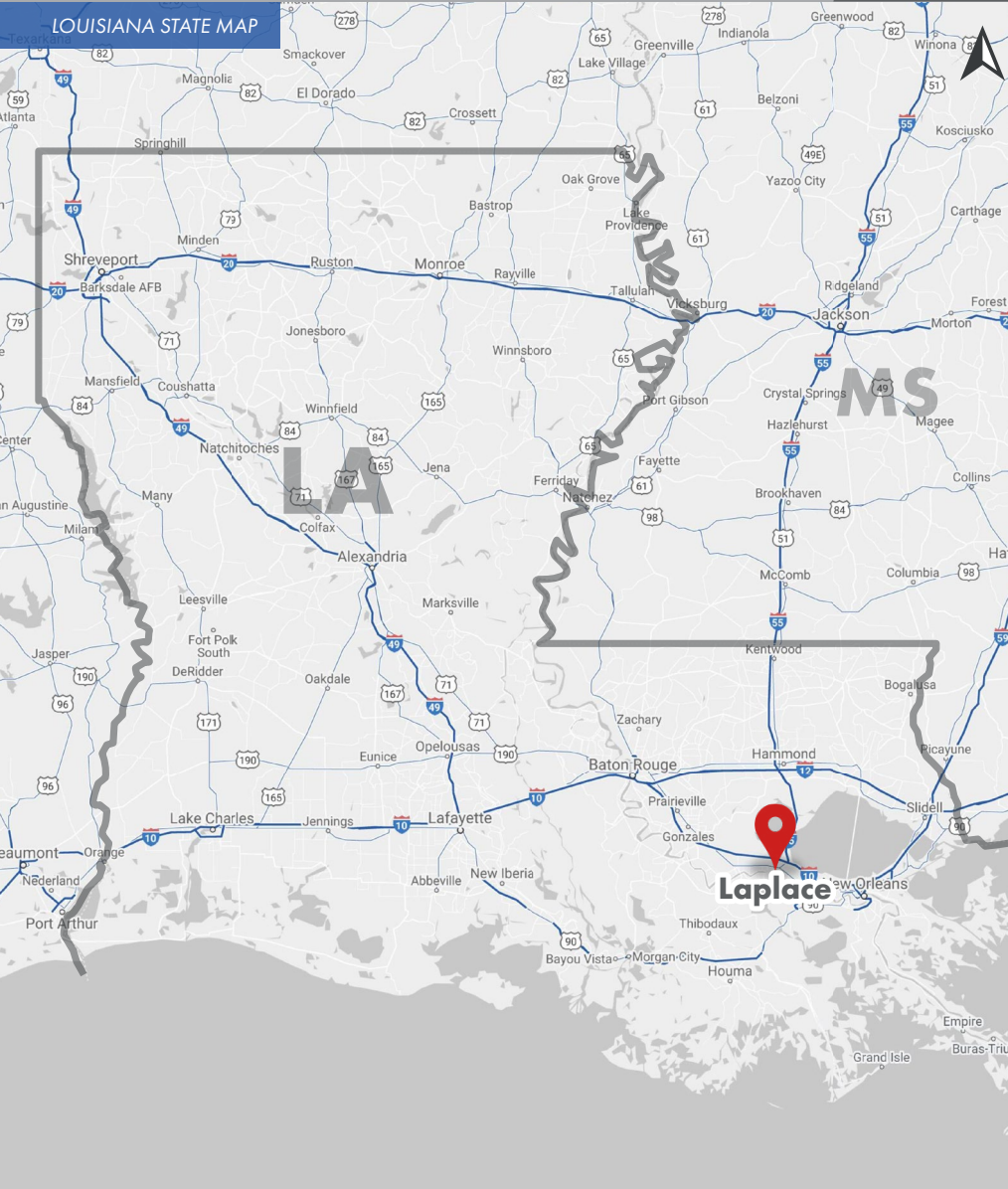
OVERVIEW

RETAIL AERIAL

MAPS

SURVEY

DEMOGRAPHICS



OVERVIEW

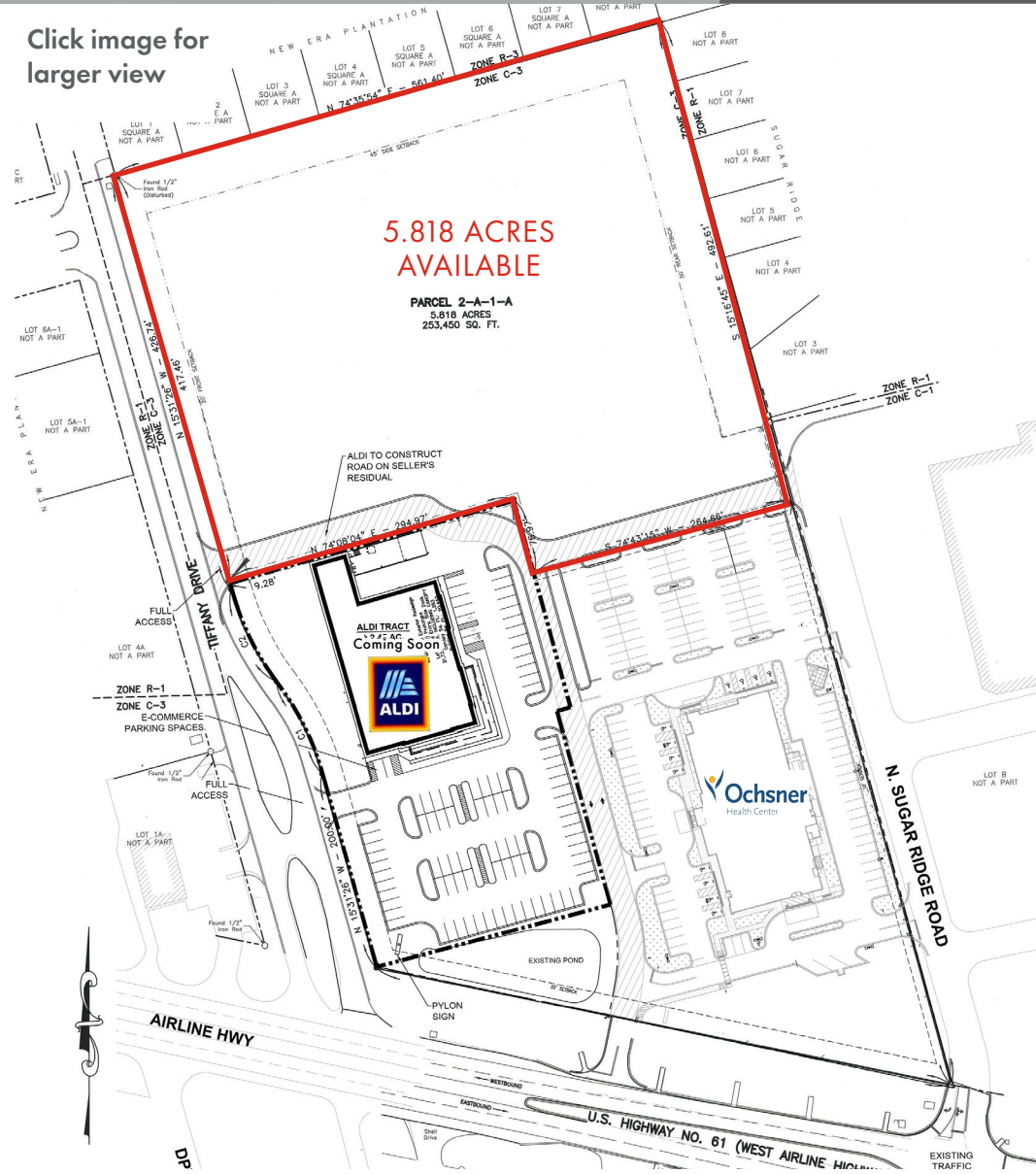
RETAIL AERIAL

MAPS

SURVEY

DEMOGRAPHICS

Click image for
larger view



OVERVIEW

RETAIL AERIAL

MAPS

SURVEY

DEMOGRAPHICS

2020 DEMOGRAPHICS

	3 MILE	5 MILE	10 MILE
<p>POPULATION</p>	32,773	39,976	52,011
<p>AVG. HH INCOME</p>	\$78,349	\$76,599	\$75,160
<p>HOUSEHOLDS</p>	12,311	15,138	19,653

