

RETAIL LEASING
OPPORTUNITIES

canal place

NEW ORLEANS, LA

STIRLING
PROPERTIES



canal place

Table of Contents

03

EXECUTIVE
SUMMARY

04

LEVEL 1-3
FLOOR PLANS

07

AREA
DEVELOPMENTS

08

DOWNTOWN
NOLA INFO

09

REGIONAL
REACH

10

PROPERTY
PHOTOS

11

DEMOS

WITH LOVE FROM
nola

PORTAL TO THE MALL

RETAIL LEASING OPPORTUNITIES

AVAILABILITY

Level 1

- Suite 1.19 - 813 SF
Former Mignon Faget
- Suite 1.21C - 1,618 SF
Frontage and Access on N. Peters Street
- Kiosk 100A - 200 SF

Level 2

- Suite 2.07 - 2,541 SF
Former BCBGMAXAZRIA
- Suite 2.08 - 839 SF
Adjacent to Saks' Shoe Department
- Suite 2.18 - 1,077 SF
Former Solstice Sunglasses
- Suite 2.19 - 1,758 SF
Former Francesca's
- Suite 2.20 - 8,860 SF
*Former Morton's Steakhouse
Second Generation Restaurant
Exterior 1st floor access*

Level 3

- Available Food Court Stalls
419 - 768 SF
- Up to 15,000 SF on 3rd Floor
See Agents for Details

PROPERTY SUMMARY

World-class retailers and locally-celebrated designers. Canal Place is Downtown New Orleans' premier shopping destination for luxury fashion, beauty brands, boutique clothing stores, home goods and much more. Style your French Quarter excursion with the latest trends from Canal Place's exclusive retailers.

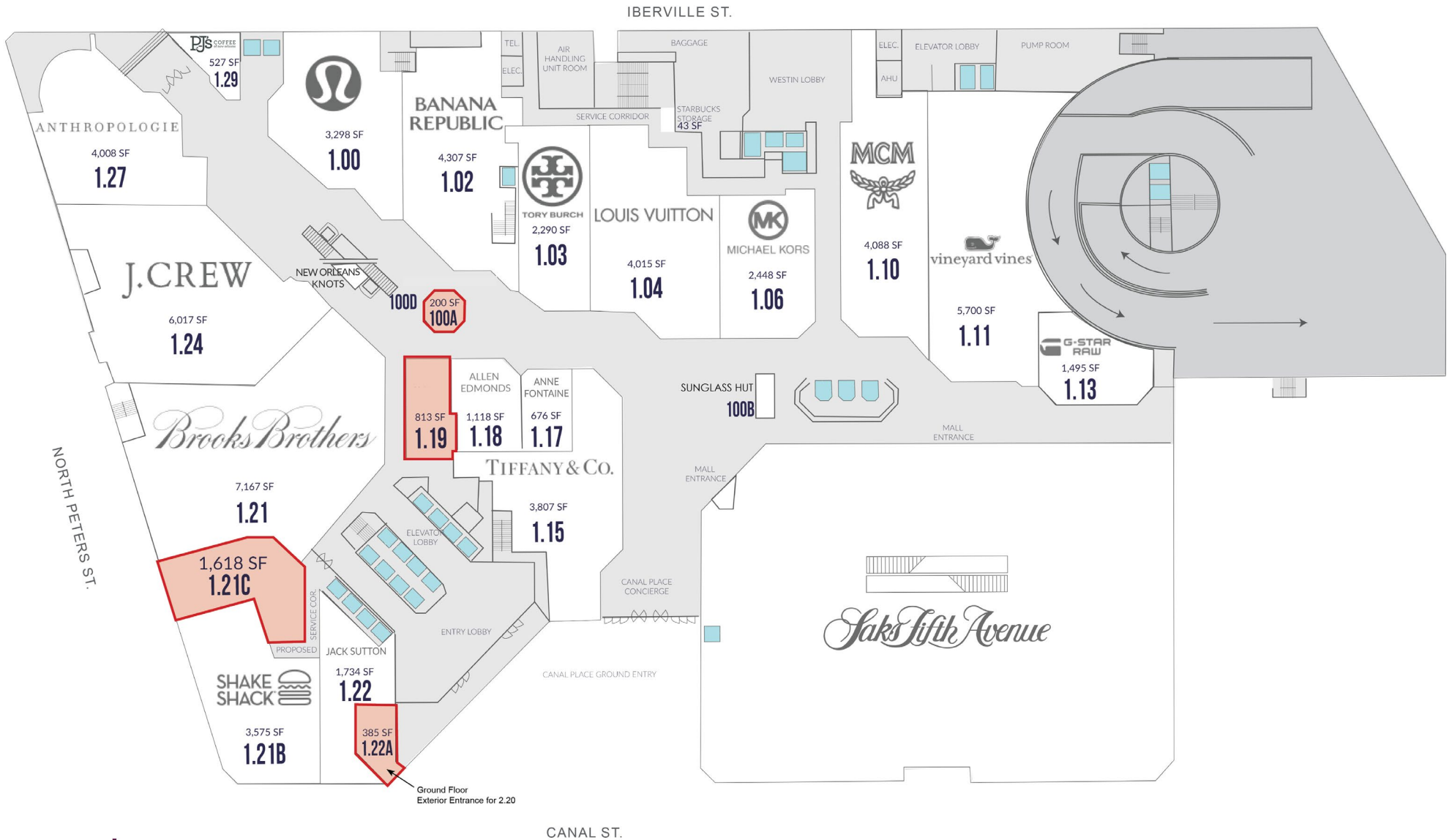
Ample parking surrounds the center with an attached 7-story parking structure and expansive surface parking.

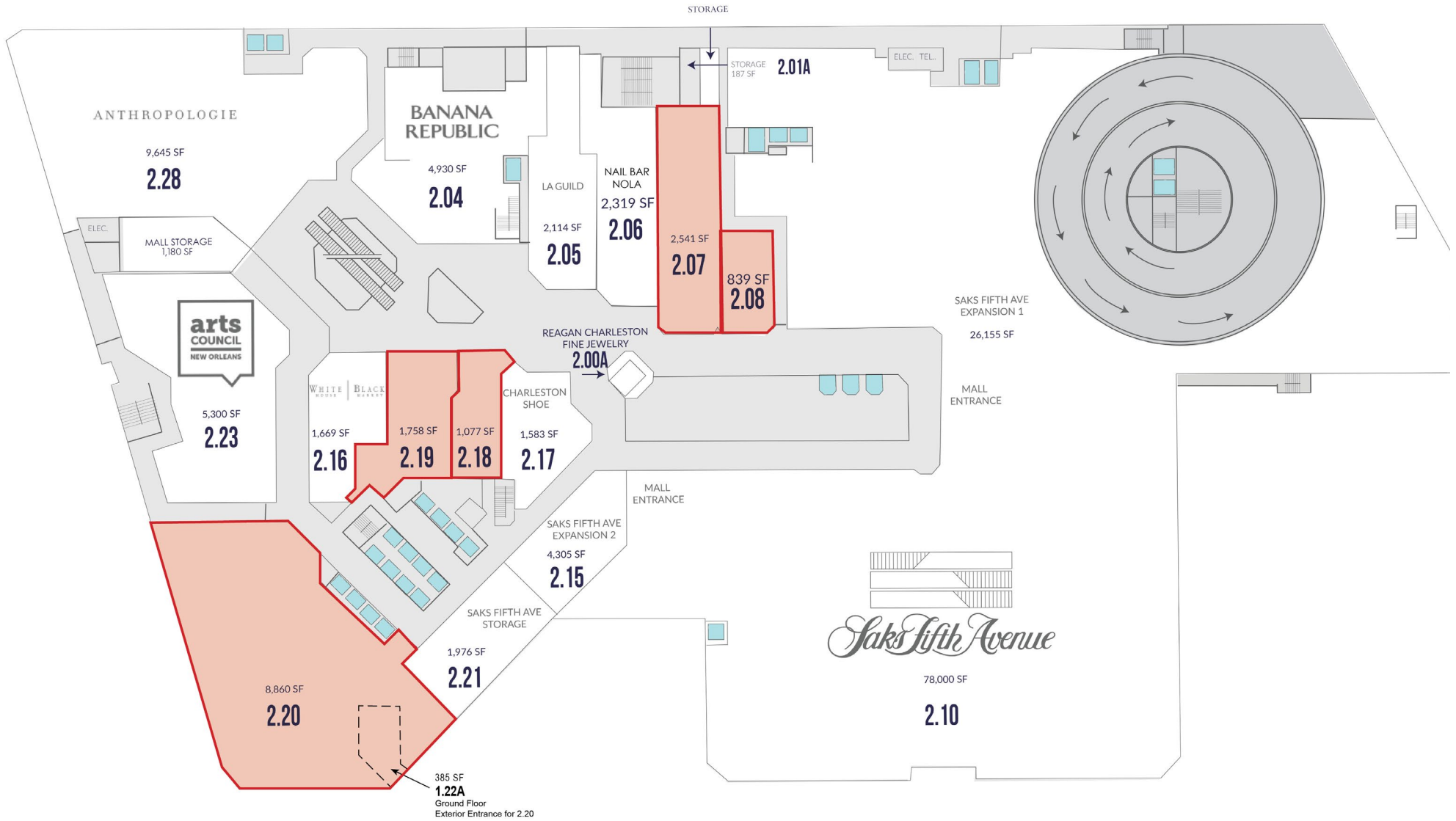
The building sustains interest and foot traffic by not only being at the center of a world-renowned tourist destination, but also housing The Westin New Orleans Hotel, a recently renovated 4-star hotel with 437 rooms, and One Canal Place, a 32-story Class A office tower.

TENANTS

- Saks Fifth Avenue
- Tiffany & Co.
- Louis Vuitton
- Tory Burch
- MCM
- lululemon
- Banana Republic
- Anthropologie
- Brooks Brothers
- J.Crew
- Michael Kors
- Allen Edmonds
- Anne Fontaine
- G-Star RAW
- Shake Shack
- Sunglass Hut
- LA Guild
- White House Black Market
- Vineyard Vines
- Reagan Charleston Fine Jewelry
- Downtown Fitness Center
- Prytania Theatres at Canal Place
- Nail Bar NOLA
- Pedram Couture
- Canal Place Barber Shop
- and many more!







AREA DEVELOPMENTS

Four Seasons Hotel & Residences

- \$530 million redevelopment
- 92 condos, 341 hotel rooms and 3 restaurants
- Planned completion 2021

Caesars Entertainment

- Architectural and design enhancements, and rebranding from Harrah's to Caesars
- New 340-room hotel tower and restaurants
- Additional development of 2nd Floor of casino
- Planned completion 2024

Riverfront Redevelopment

- Spanish Plaza - \$7.5 million renovation with two new restaurants
- Canal-Algiers River Ferry Terminal - \$43.5 million
- Woldenberg Park - \$6 million improvements

Cruise Lines at the Port of New Orleans

- Terminal located ~0.5 Mile from site and direct access by Riverfront Streetcar line
- Carnival, Norwegian, Royal Caribbean, Disney, and Riverboat Lines
- 1.18M annual passengers (2019)

Ernest N. Morial Convention Center

- Undergoing \$557-million, five-year capital improvement plan for renovations, tech upgrades, building enhancements & linear park
- 900,000 convention center attendees (2018)

Louis Armstrong International Airport

- Completed new \$1 billion, 35-gate terminal in 2019 servicing 16 airlines
- Over 13.6M annual airline passengers (2019)



DOWNTOWN NEW ORLEANS is defined by the Downtown Development District of New Orleans (DDD) as the area bounded by Iberville Street, the Mississippi River, Pontchartrain Expressway, and Interstate 10. It includes the Central Business District and the Warehouse/Arts District. Within Downtown New Orleans, there are approximately:

Downtown Economics

- 18.51 million annual visitors to Downtown New Orleans spending \$8.7 billion
- 142,764 average daytime population
- Heart of a regional population of 1.25 million
- Over \$7 billion in investments since 2005
- Largest employment center in Louisiana with 62,000+ jobs

Downtown Entertainment & Tourism

- 71 hotels with 20,355 hotel rooms
- 130 festivals in New Orleans each year, which equates to roughly one festival every three days
- Sporting and cultural events attract 2.5 million visitors Downtown a year
- 234 restaurants and sidewalk cafés
- Warehouse/Arts District is home to 23 art galleries and museums.

Downtown Commercial

- 8.9 million square feet of Class A office space
- 241 retail stores

Downtown Residential

- Almost 40,000 residents
- 6,775 apartments and condos in Downtown with 1,700 more units on the way
- \$89,000 average household income of a Downtown resident
- 1.2 walkable square miles

Information from: University of New Orleans' Hospitality Research Center (May 2018), Downtown New Orleans Demographic Profile, Downtown Development District of New Orleans (May 2019), and Downtown By The Numbers, Downtown Development District of New Orleans (January 2018)





REGIONAL REACH

The only Saks Fifth Avenue within 350 miles from New Orleans, Canal Place benefits from a larger than average trade area. The center's one-of-a-kind luxury offerings contribute to its status as the premier luxury shopping destination in the Gulf region. Affluent shoppers from across the Gulf South routinely make the commute to New Orleans for a day of shopping and sightseeing. Drive market consumers travel from cities as far away as Pensacola, Florida, Lafayette, Louisiana, and Jackson, Mississippi.

NEW ORLEANS MSA

0-60 Minutes Away
1.28 M People
\$82,900 Avg. HH Inc.

BATON ROUGE MSA

80 Minutes Away
850,000 People
\$81,700 Avg. HH Inc.

LAFAYETTE MSA

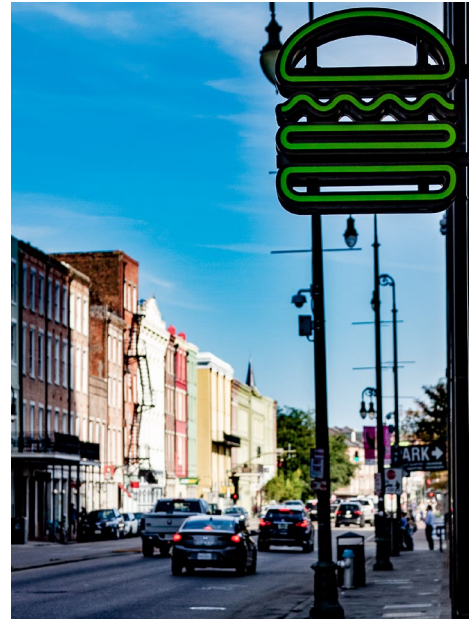
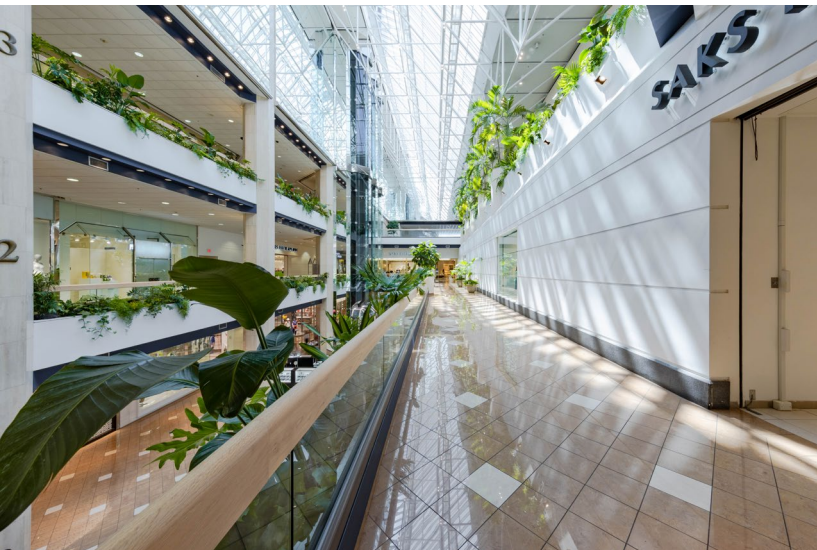
2 Hours Away
491,000 People
\$72,400 Avg. HH Inc.

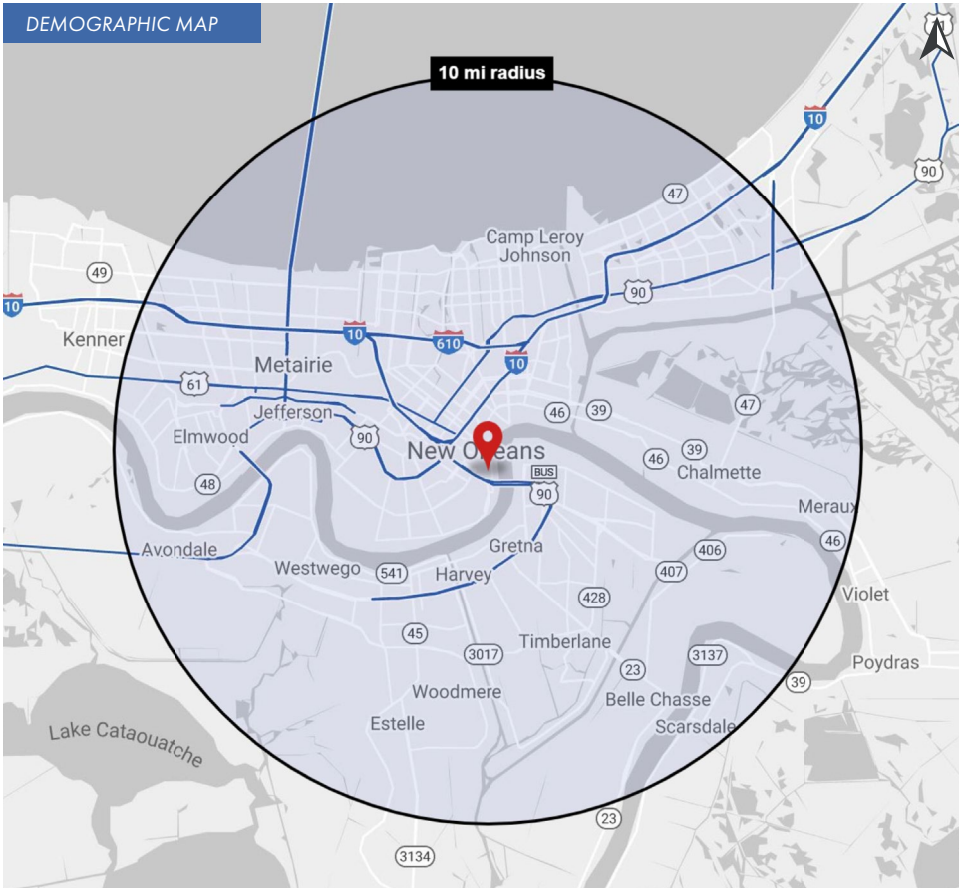
MOBILE MSA

2 Hours Away
428,700 People
\$68,400 Avg. HH Inc.

PENSACOLA MSA

3 Hours Away
507,600 People
\$77,400 Avg. HH Inc.





2021 DEMOGRAPHICS - 10 MILE RADIUS



770,042



\$78,826



300,417



38.6