

PREMIER CENTRE

MANDEVILLE, LA

WHOLE FOODS MARKET

STIRLING
PROPERTIES

FOR LEASE

GLA

- +/- 273,000 SF

AVAILABILITY

- 2,250 SF - 7,750 SF
Up to 75' Frontage
Prior Victoria's Secret &
Prior Motherhood Maternity Combined

DESCRIPTION

Premier Centre is approximately 273,000 square feet and is located in Mandeville, on the Northshore of Lake Pontchartrain in St. Tammany Parish. This center is ideally situated in the heart of the community, an area that has seen incredible growth and higher than average incomes. The sales per square foot are well above average for the national tenants in the center.

TENANTS

- | | | |
|----------------------|-----------------------------|-------------------------|
| • Whole Foods Market | • LOFT | • Jose Bali Jewelry |
| • Bed Bath & Beyond | • American Eagle Outfitters | • Chase |
| • T.J.Maxx | • Buckle | • Chili's |
| • Barnes & Noble | • Blu Spero | • El Paso Mexican Grill |
| • Old Navy | • JJill | • la Madeleine |
| • Gap/Gap Kids | • H.W. Rosenblum | • The Big Squeezy |
| • Rack Room Shoes | • Earthsavers | |
| • Banana Republic | • Bath & Body Works | |

OPENING APRIL 2021

- 4,478 SF National Tenant Lease Signed
- 19,106 SF - 103.5' Frontage Prior F21 Red
- 34,000 SF - 170' Frontage Prior Stein Mart



COVER

OVERVIEW

AERIAL

SITE PLAN

PHOTOS

DEMOGRAPHICS



COVER

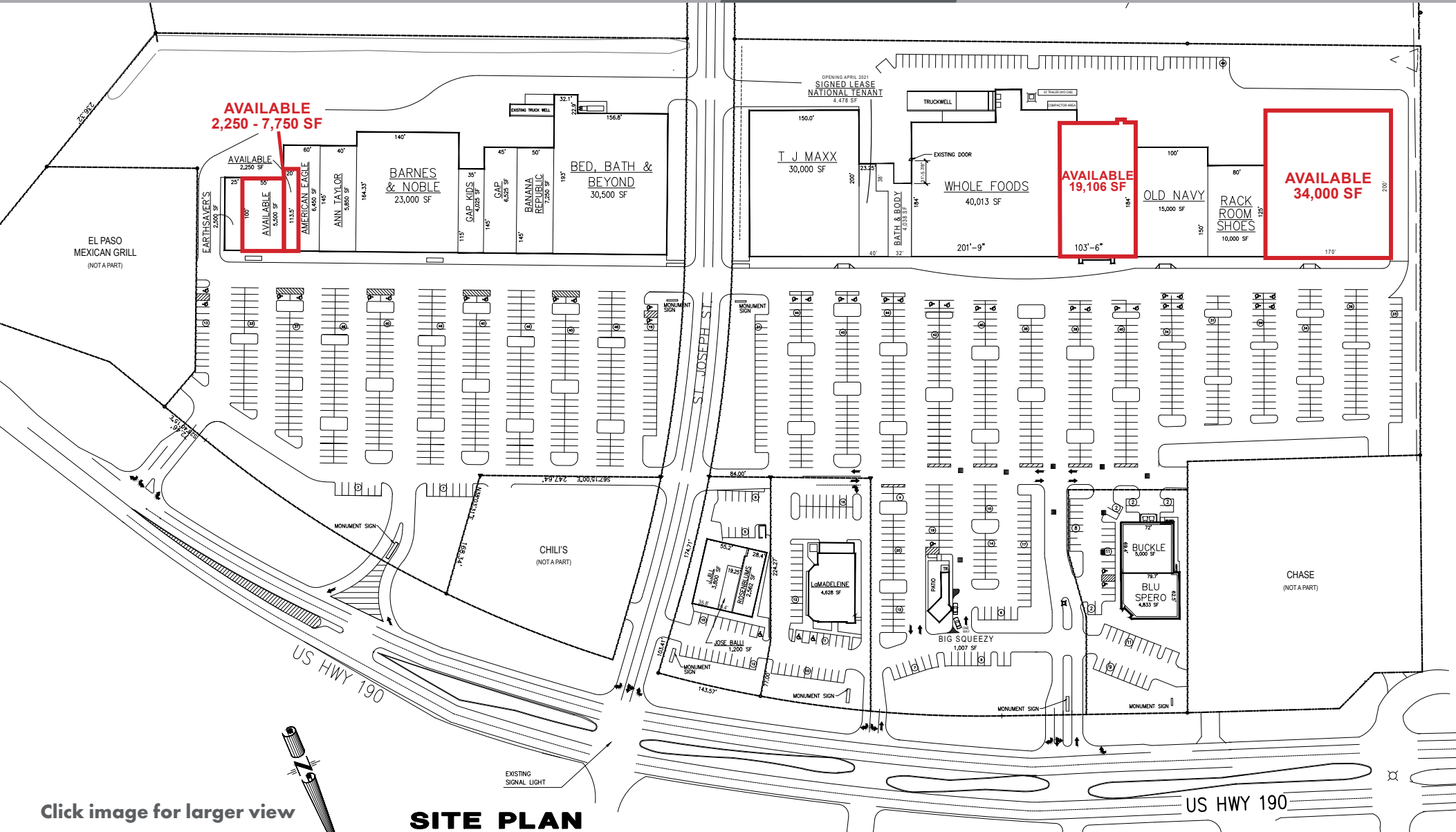
OVERVIEW

AERIAL

SITE PLAN

PHOTOS

DEMOGRAPHICS



Click image for larger view

SITE PLAN

COVER

OVERVIEW

AERIAL

SITE PLAN

PHOTOS

DEMOGRAPHICS



COVER

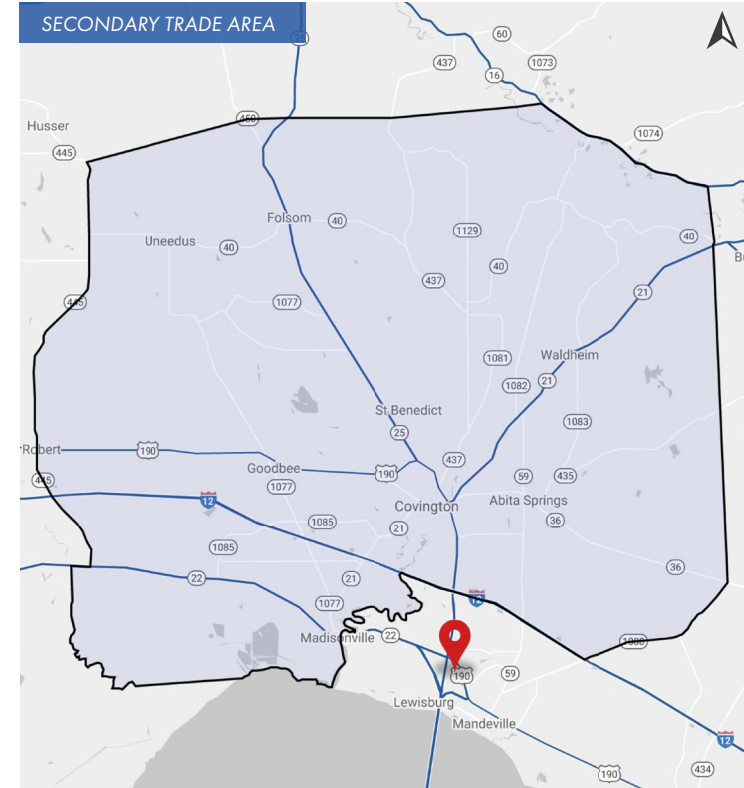
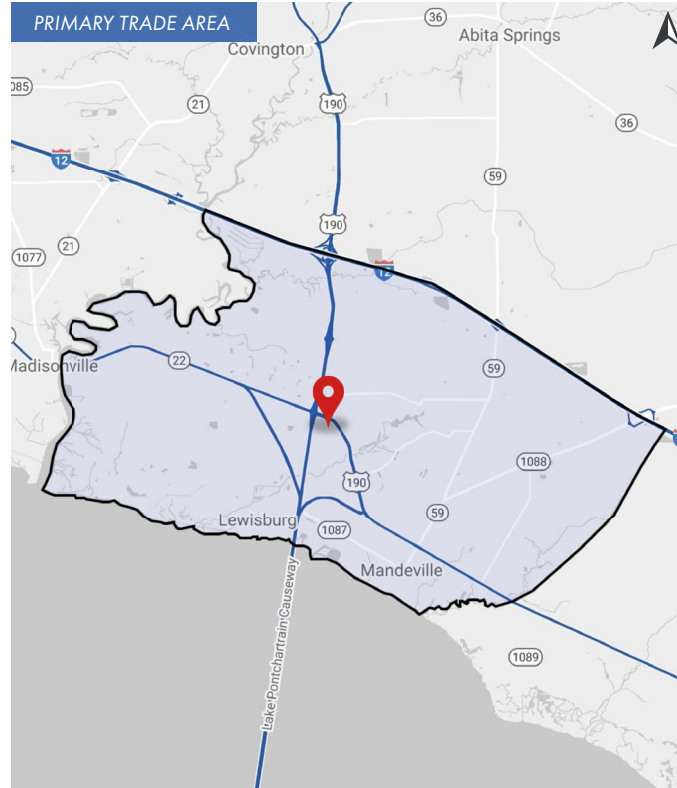
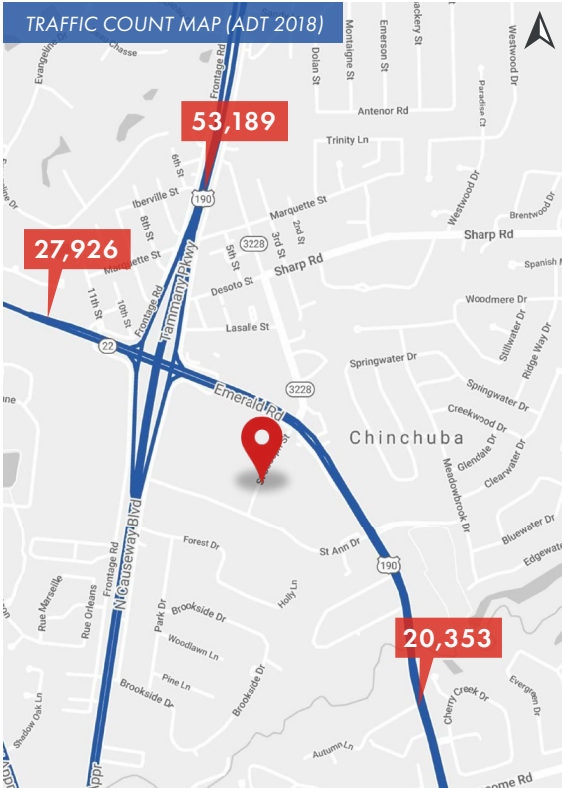
OVERVIEW

AERIAL

SITE PLAN

PHOTOS

DEMOGRAPHICS



2020 DEMOGRAPHICS

PRIMARY TRADE AREA

SECONDARY TRADE AREA



POPULATION

51,541

100,590



AVG. HH INCOME

PRIMARY TRADE AREA

SECONDARY TRADE AREA

\$124,726

\$87,474



HOUSEHOLDS

PRIMARY TRADE AREA

SECONDARY TRADE AREA

19,908

39,667