

WOODLAWN PARK

SHOPPING CENTER

BATON ROUGE, LA

Shoppers Value Foods

Deli

Bakery

Pharmacy

Specialty Meats

Floral

STIRLING
PROPERTIES

FOR LEASE

GLA

97,177 SF

AVAILABILITY

In-line Space

- 1,400 SF
- 2,186 SF
- 2,981 SF
- 4,088 SF
- 6,000 SF
- 33,387 SF
- Outparcel: 1.1 Acres (For Sale or Lease)
- Proposed Outparcel: 0.67 Acres (For Sale or Lease)

SIGNAGE

- Store Front and Pylon Available

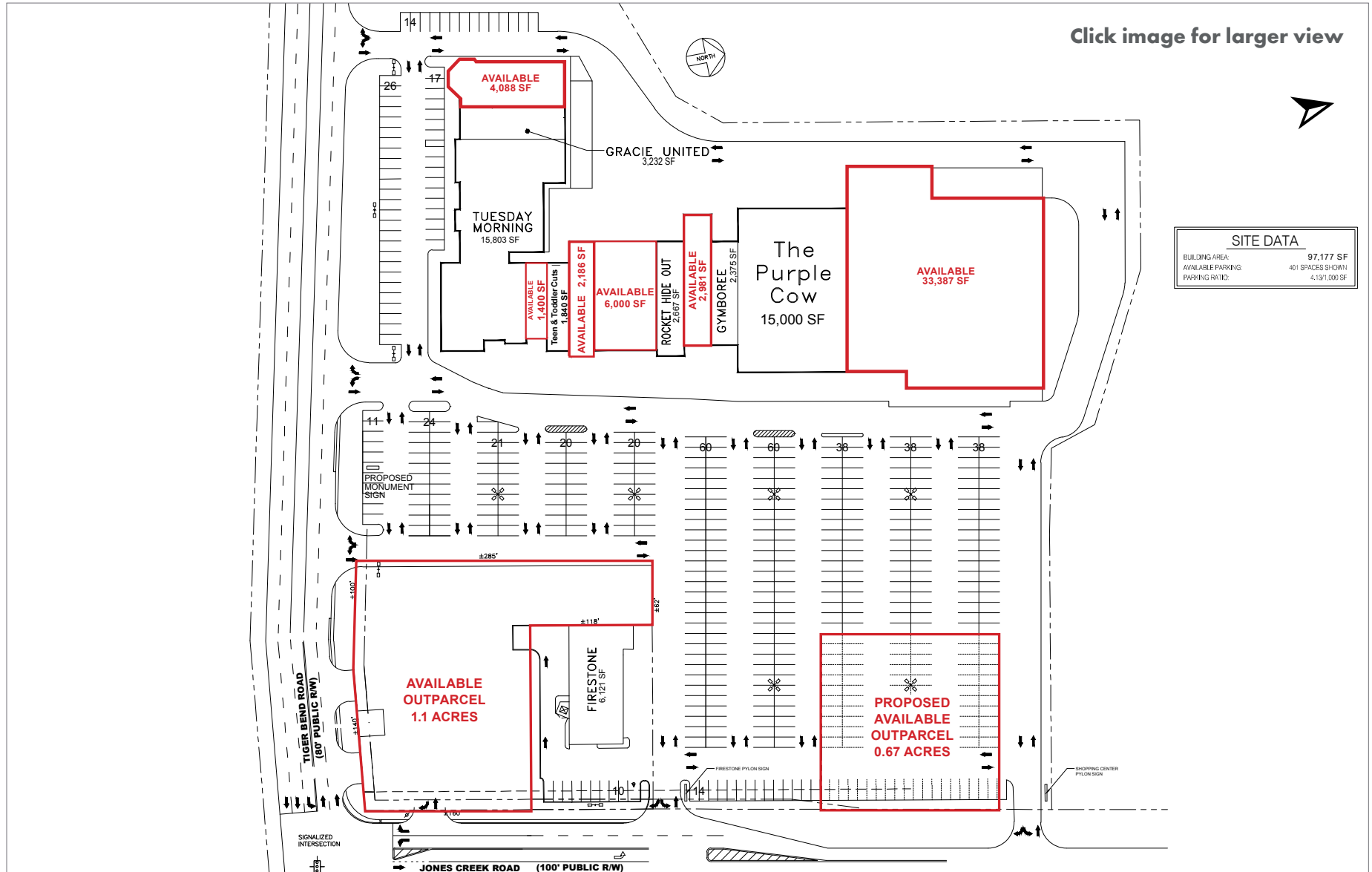
DESCRIPTION

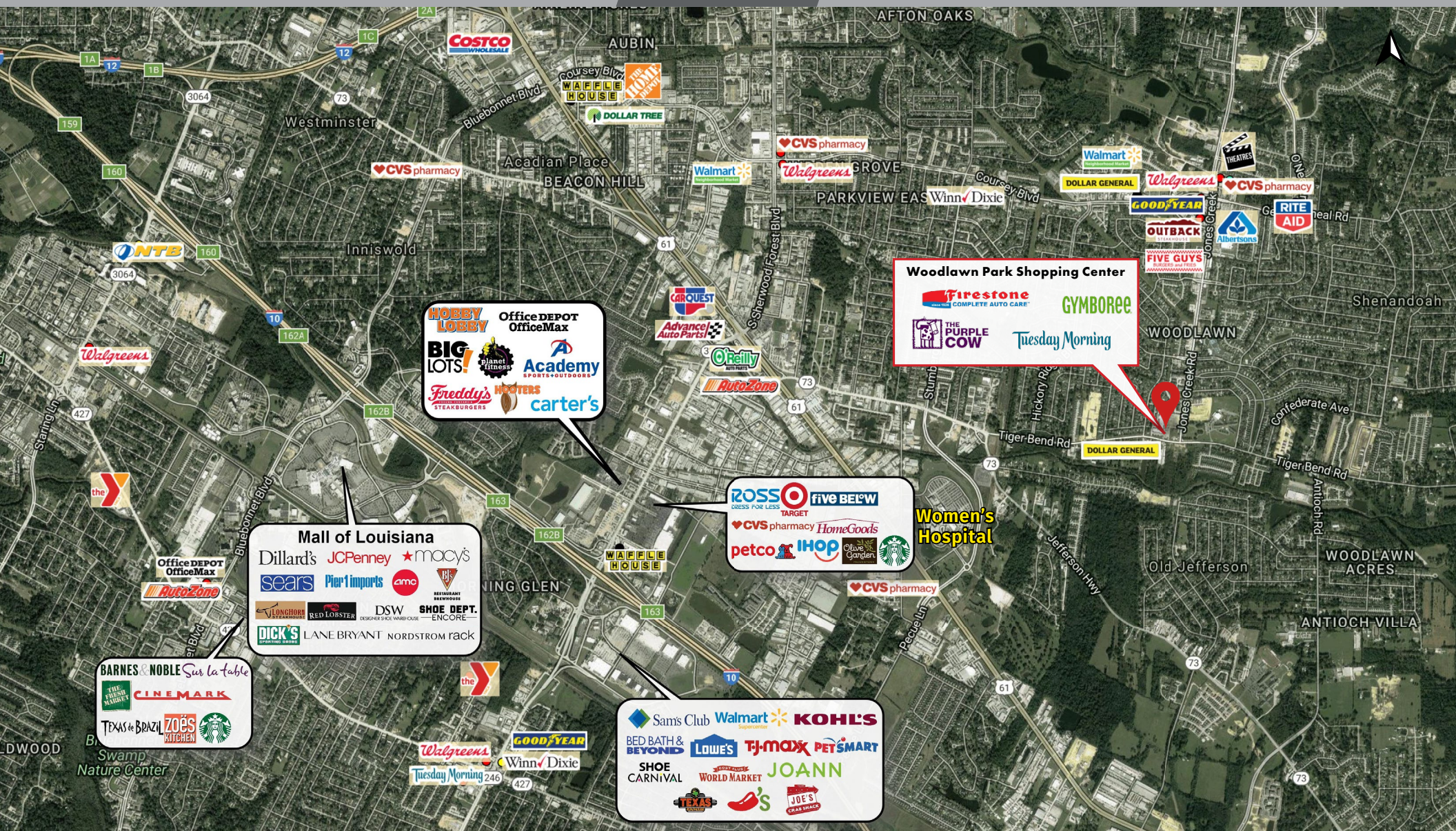
Woodlawn Park Shopping Center is located in the heart of one of the most rapidly growing areas of Baton Rouge. Surrounded by a strong upper-to middle-income demographic, Woodlawn Park is an ideal location for retailers.

TENANTS INCLUDE

- The Purple Cow
- Tuesday Morning
- Firestone
- Hallmark
- Gymboree
- State Farm
- Rocket's Hideout Cards & Games
- Gracie United Brazilian Jiu-Jitsu
- Teen and Toddler Cuts














2020 DEMOGRAPHICS

	1 MILE	3 MILE	5 MILE
 <p>POPULATION</p>	10,660	56,972	134,012
 <p>AVG. HH INCOME</p>	\$93,046	\$95,071	\$94,631
 <p>HOUSEHOLDS</p>	4,462	24,664	58,433

