

## SUMMARY

## RETAIL COMPETITION

## SITE PLAN

## DEMOGRAPHICS

# FOR SALE, LEASE, OR BUILT TO SUIT

## PROPERTY OVERVIEW

±27 acres available just south of Champion's Way on Highway 181 in Daphne, AL. This property is unzoned and part of the Daphne ET Jurisdiction.

Property is for sale, lease, or build to suit. Adjacent acreage available if your client desires more than 27 acres. Please call agent for more details.

## AVAILABLE

- ±27 Acres

## AREA BUSINESSES

- Sam's Club
- Lowe's
- Thomas Hospital Emergency - Malbis
- Whataburger
- Mellow Mushroom
- Dunkin'
- Eastern Shore Urgent Care
- Infinity Bicycles

## TRAFFIC COUNT (ADT 2019)

- On Highway 181, at site: 26,133



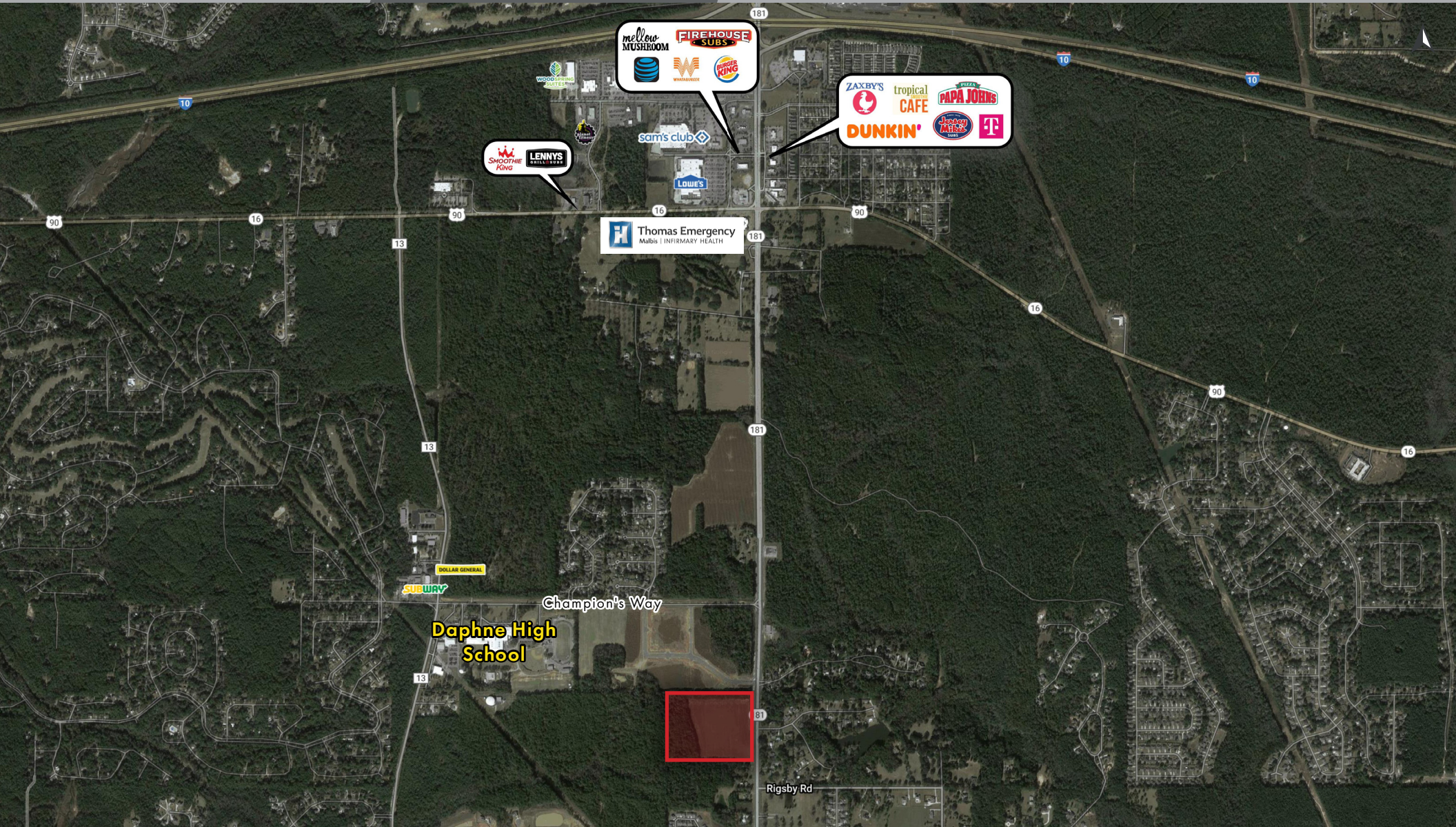


## SUMMARY

## RETAIL COMPETITION

## SITE PLAN

## DEMOGRAPHICS



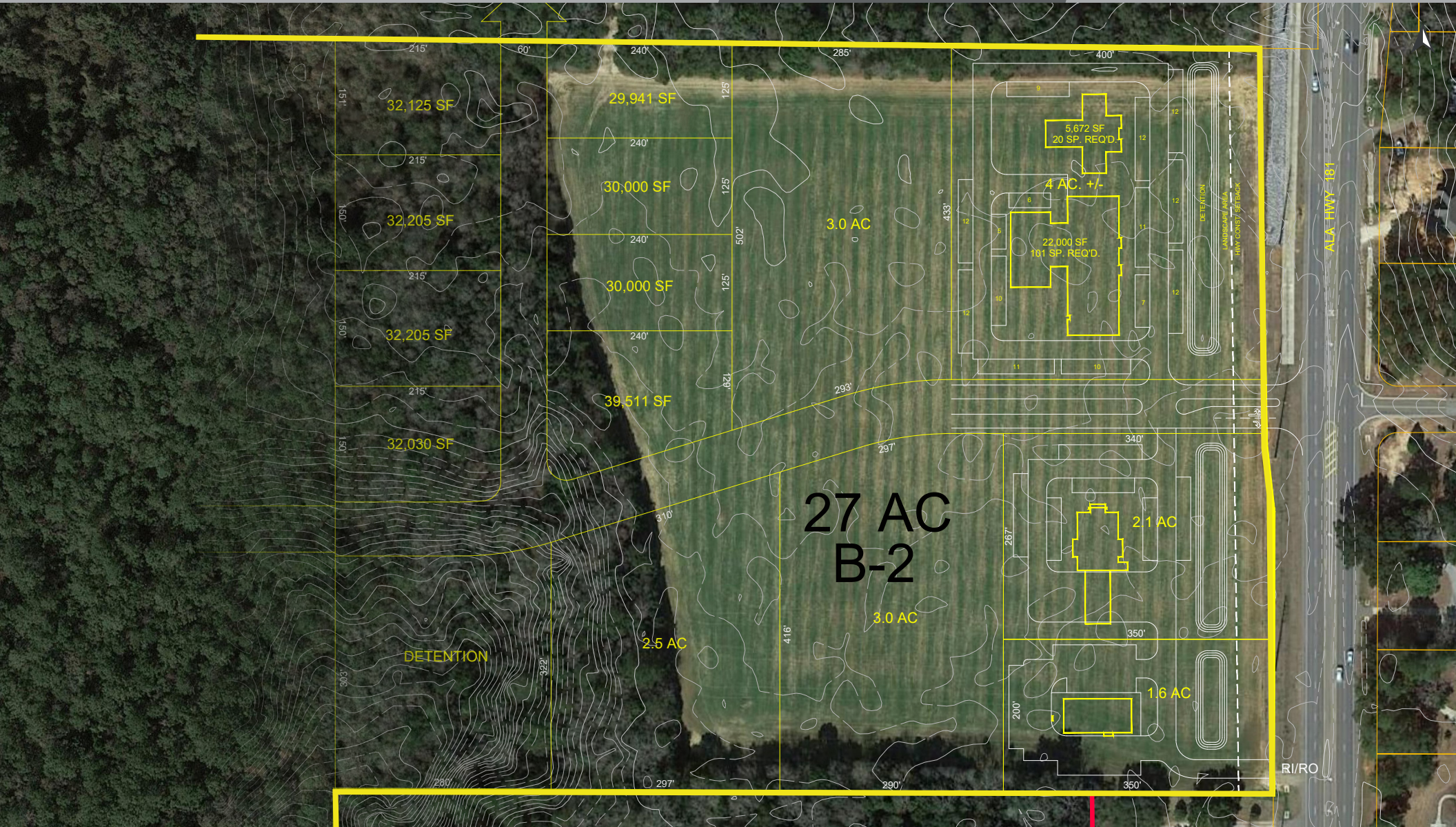


## SUMMARY

## RETAIL COMPETITION

## SITE PLAN

## DEMOGRAPHICS








## SUMMARY

## RETAIL COMPETITION

## SITE PLAN

## DEMOGRAPHICS

### 2020 DEMOGRAPHICS

	1 MILE	3 MILE	5 MILE
 POPULATION	2,303	25,667	52,759
 AVG. HH INCOME	\$92,993	\$82,429	\$87,395
 HOUSEHOLDS	923	10,548	21,591

