

## FOR SALE

### PROPERTY SUMMARY

This site is a 2.5 acre outparcel on Beach Boulevard (Highway 90) in Gulfport, MS. There is access to Beach Boulevard via a signalized intersection at Debuys Road. Site is directly across from the beach and in close proximity to the casinos in Biloxi. The outparcel on the other side of Debuys Road is also available. Please call agent for more details.

### AVAILABLE

- 2.5 Acres

### PRICE

- \$735,000

### NEARBY BUSINESSES

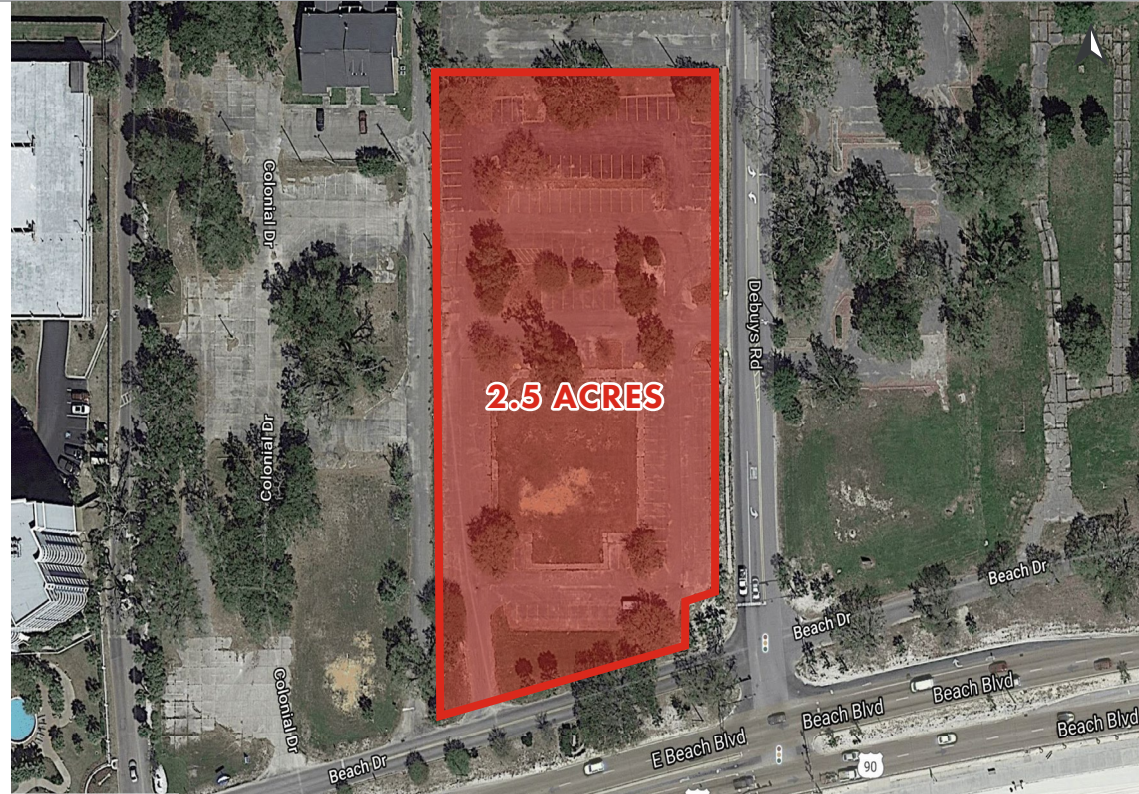
- Walmart Supercenter
- IHOP
- Dollar Tree
- Tuesday Morning
- Brick & Spoon
- Edgewater Mall: JCPenney, Chick-fil-A, Dillard's, Belk, Books-A-Million, Bath & Body Works, Victoria's Secret, Foot Locker, Champs Sports, Shoe Dept. Encore, American Eagle, Journeys, Zales, PacSun

### TRAFFIC COUNTS (ADT 2019)

- On Beach Boulevard, west of site: 24,000

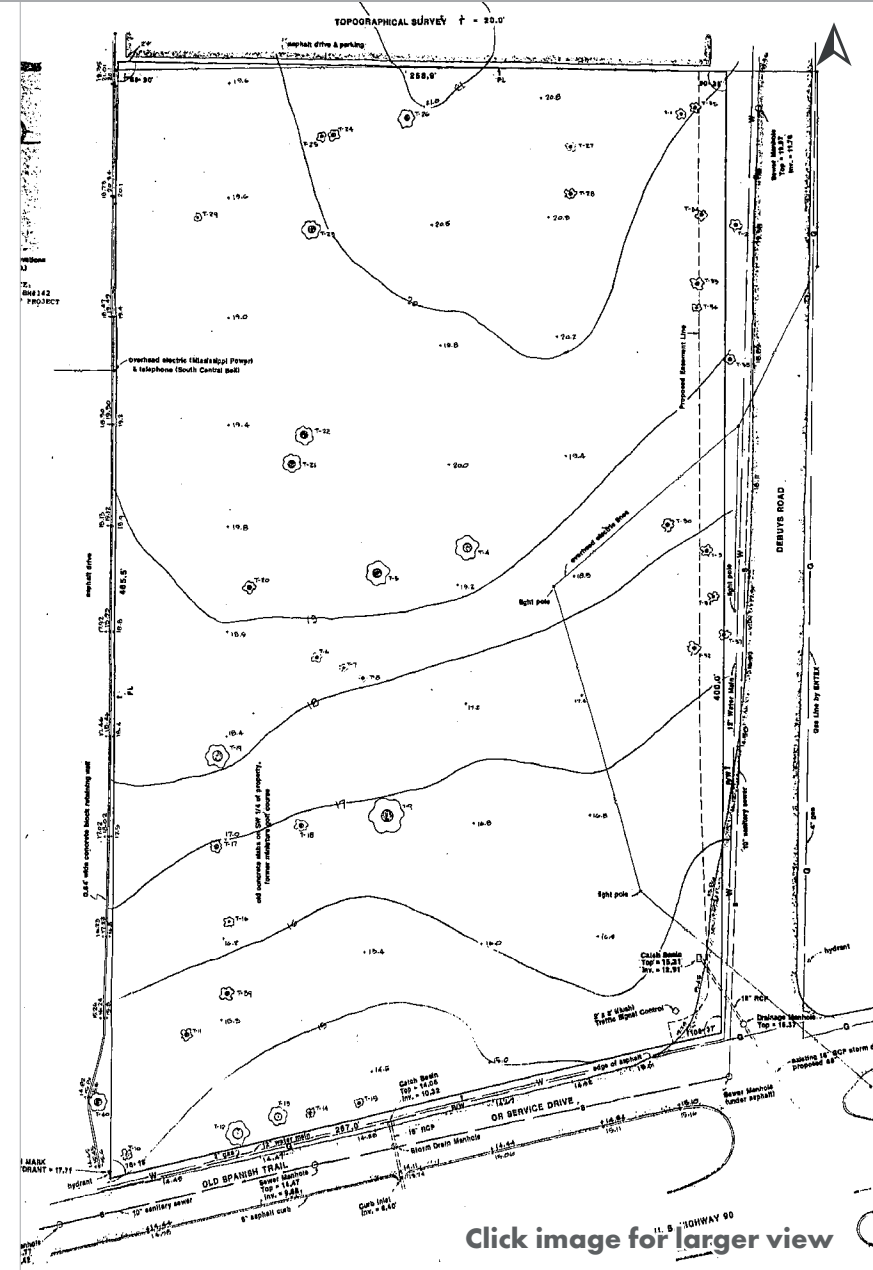
### 2020 DEMOGRAPHICS

	3 MI	5 MI	10 MI
Population	27,859	58,284	163,838
Avg. HH Income	\$63,897	\$65,841	\$63,094



# 2.5 ACRE OUTPARCEL

2400 E. Beach Boulevard, Gulfport, MS



[Click image for larger view](#)