

# ELEVEN 20 CLUB

1114 - 1126 LAKE STREET  
DOWNTOWN OAK PARK, IL



UP TO 16,243 SQ FT AVAILABLE FOR LEASE

CONTACT

SHARON BAR-SHALOM | SBARSHALOM@METROCRE.COM | 847.780.1299  
ROBERT MELSER | RMELSER@METROCRE.COM | 847.412.9898

**METRO**  
COMMERCIAL REAL ESTATE

# ELEVEN 20 CLUB

1114 - 1126 LAKE STREET - DOWNTOWN OAK PARK, IL

## PROPERTY HIGHLIGHTS

- Up to 16,243 SF Retail Space Available at the base of 44 Unit Condo Building
  - » 1,289 SF / 1,720 SF / 5,020 SF
  - » 2,227 Sq Ft Fully Fixtured Bakery
  - » 5,987 Sq Ft Endcap with Black Iron
- Located the Heart of Downtown Oak Park's Retail Corridor
- Fronting Lake St (13K VPD), One Block East of Harlem (37K VPD)
- Free Parking up to 1.5 Hours at Public Garage w/ 1,213 Spots
- Close Proximity to CTA & Metra Stations:
  - » CTA Green Line (550,000 average ridership per year)
  - » Oak Park Metra (350,000 average ridership per year)

## DEMOGRAPHICS

	½ MILE	1 MILE	2 MILES
TOTAL POPULATION	11,565	33,536	115,477
DAYTIME POPULATION	12,546	28,151	78,625
HOUSEHOLDS	6,558	16,821	48,994
AVG HH INCOME	\$118,566	\$136,138	\$122,466

## TRAFFIC COUNTS

**37k**

N HARLEM AVE  
VEHICLES PER DAY

**13k**

LAKE STREET  
VEHICLES PER DAY

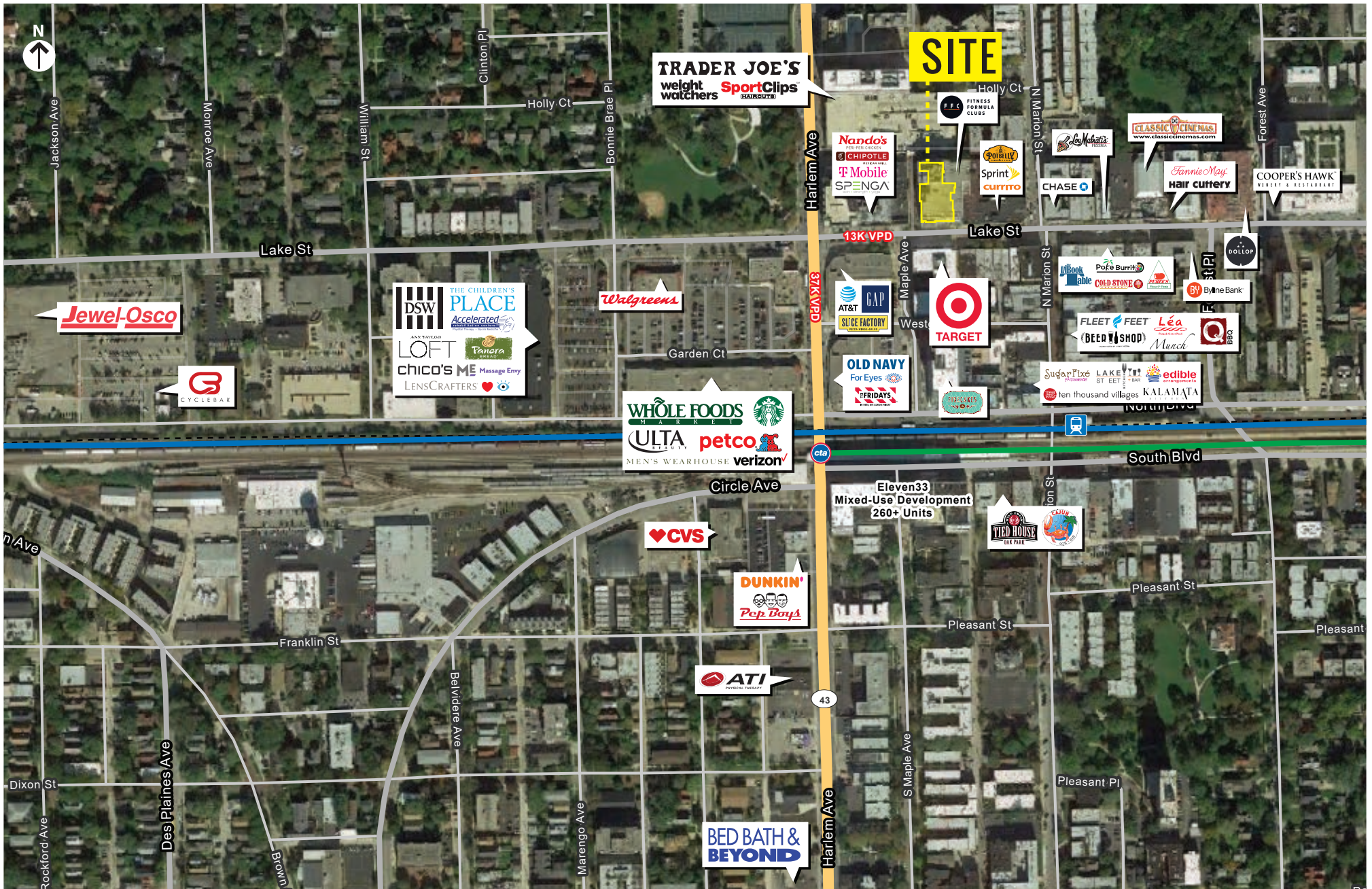
## WALK SCORE

**96**

WALK SCORE  
WALKER'S PARADISE  
Daily Errands Do Not Require a Car

**61**

TRANSIT SCORE  
GOOD TRANSIT  
Many Nearby Public Transportation Options



1114-1126 LAKE STREET - DOWNTOWN OAK PARK, IL

**UNDER NEW MANAGEMENT**



TRADER JOE'S

weight  
watchers

SportClips  
HAIRCUTS

CHIPOTLE  
MEXICAN BURGERS

T-Mobile

SPENGA

Nando's  
PERI-PERI CHICKEN

F.F.C.  
FITNESS  
FORMULA  
CLUBS

SITE

CURRITO

Sprint  
POBELL'S  
RESTAURANT

GNC  
LIVE WELL

ROSIN  
RESTAURANT

CHASE

Lake St

Harlem Ave

37K VPD

13K VPD

Lake St

Marion St

citibank

NOODLES  
COMFORT  
WASH DC RESTAURANT

Walgreens

ROBERTO  
COSTUME

GAP

Pier 1 imports

Maple Ave

AT&T

SLICE FACTORY  
PIZZERIA

TARGET

WELLS FARGO  
BANK

PAPER SOURCE

Sushi House

LAKEVIEW  
STREET BAR

COZY CORNER  
RESTAURANT & BAR

COLD STONE  
CREAMERY

Personalization House

The Gold Hatpin

BBQ

ten thousand villages

JAYNE

Westgate St

OLD NAVY

For Eyes

SugarFixe  
RESTAURANT

James Anthony  
Salon

LANOITE  
RESTAURANT

a matter  
of style  
Salon & Day Spa

Lea  
RESTAURANT

March

WHOLE FOODS  
MARKET

ULTA  
BEAUTY

petco



HOLLEY COURT PUBLIC PARKING GARAGE  
1,213 PUBLIC SPACES

# ELEVEN 20 CLUB

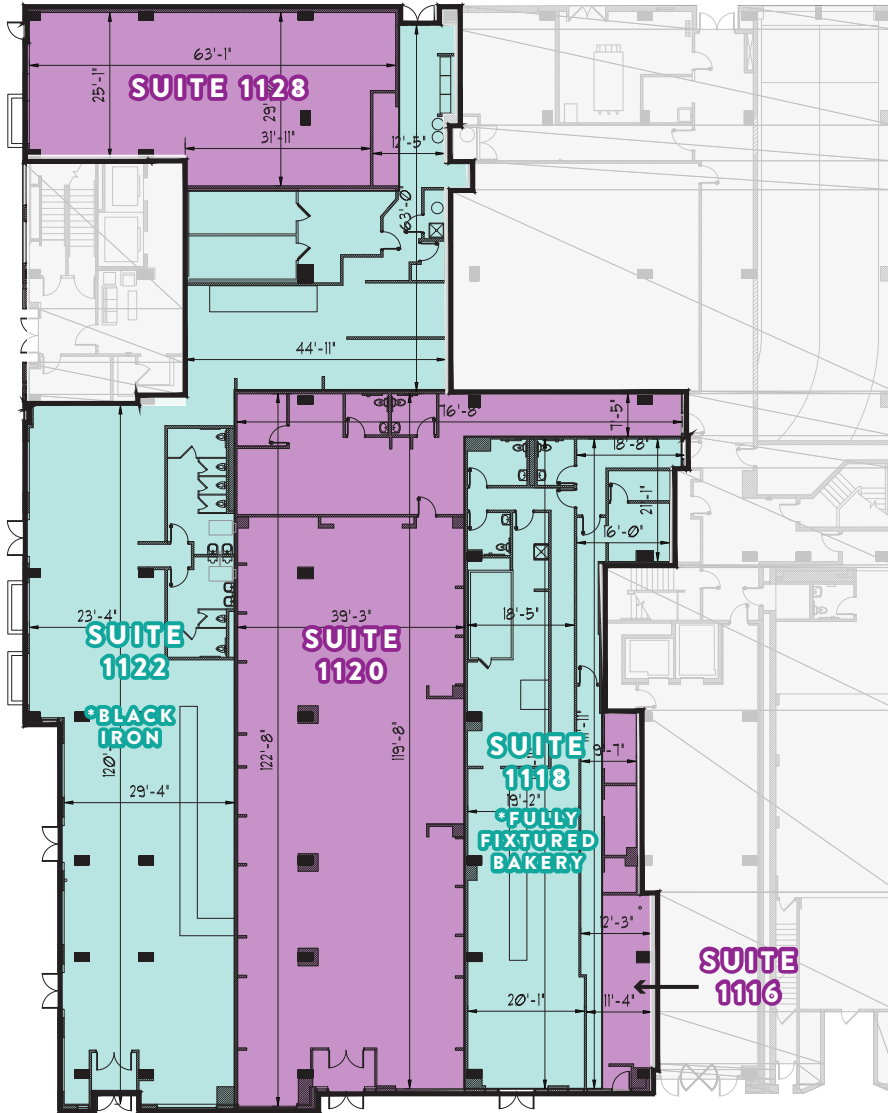
1114 - 1126 LAKE STREET - DOWNTOWN OAK PARK, IL

## EXISTING BUILD-OUT

SUITE	SQ FT
1116	1,289
1118	2,227
1120	5,020
1122	5,987
1128	1,720

UP TO 16,243 SF (COMBINED)

MAPLE AVENUE



LAKE STREET

## CONTACT

SHARON BAR-SHALOM | SBARSHALOM@METROCRE.COM | 847.780.1299  
ROBERT MELSER | RMELSER@METROCRE.COM | 847.412.9898

## LEASING CONTACTS

---

### SHARON BAR-SHALOM

SBARSHALOM@METROCRE.COM

847.780.1299

### ROBERT MELSER

RMELSER@METROCRE.COM

847.412.9898

**METRO**  
COMMERCIAL REAL ESTATE

[WWW.METROCRE.COM](http://WWW.METROCRE.COM)

© 2021 METRO COMMERCIAL REAL ESTATE. ALL RIGHTS RESERVED. ALL INFORMATION CONTAINED HEREIN IS FROM SOURCES DEEMED RELIABLE; HOWEVER, NO REPRESENTATION OR WARRANTY IS MADE TO THE ACCURACY THEREOF.

