

1320 N Meacham Rd, Schaumburg, Illinois
2,798 Sq Ft Building with 527 Sq Ft Patio Available



FOR LEASE

LEASING CONTACTS:

// JONATHAN HYMAN jhyman@metrocre.com 224.365.8144
// REUBEN RISCHALL rrischall@metrocre.com 312.560.2224



Property Highlights

- 2,798 Sq Ft Freestanding 2nd Generation Drive-Thru Restaurant with 527 SF Patio (FF&E Included)
- Excellent Positioning within a High Barrier to Entry Restaurant & Drive-Thru Market
- Located at Signalized Intersection
- Immense Parking Field with 220 Parking Spaces
- Newer Construction - Completed in 2018
- Super Regional Woodfield Mall Trade Market

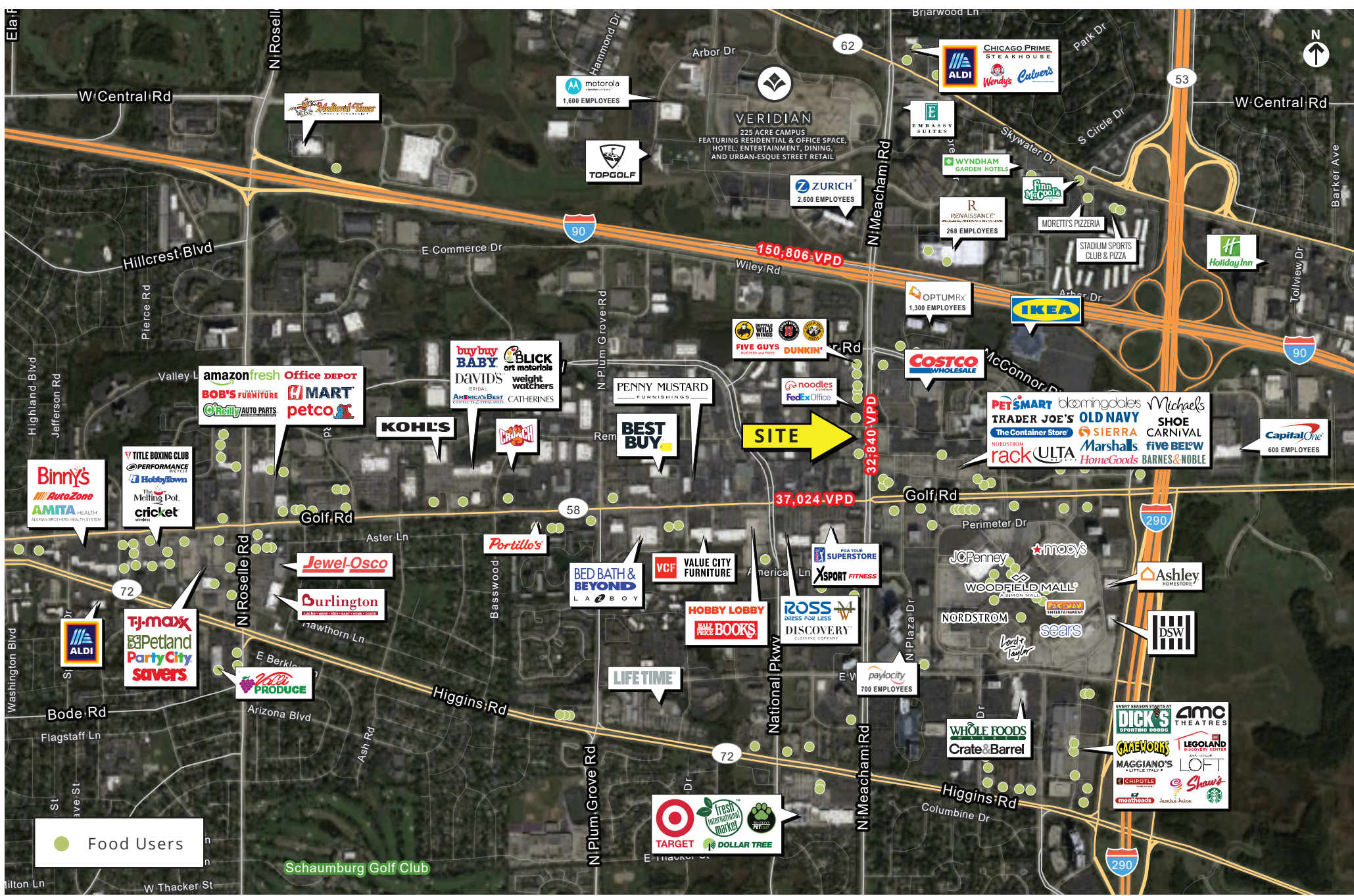
Demographics

	1 MILE	3 MILES	5 MILES
TOTAL POPULATION	3,909	78,631	272,070
DAYTIME POPULATION	34,872	138,572	315,774
HOUSEHOLDS	1715	33,024	110,325
AVG HH INCOME	\$81,099	\$112,891	\$118,303

Traffic Counts

	COUNT
MEACHAM RD	32,840 VPD
GOLF RD	37,024 VPD
I-90	150,806 VPD





Woodfield Trade Area

The Village of Schaumburg

Schaumburg is the largest center of economic development in the State of Illinois, outside the City of Chicago.

In addition to the 9.5 millions square feet of retail & commercial space, the village has over 12 million square feet of office space and 13.5 million square feet of industrial space.

With a daytime population of 150,000, thousands of businesses, 30 hotels, over 200 restaurants, highly educated workforce, superb location and high quality of life, Schaumburg is 'The Place for Business.'

Shopping Centers By Size

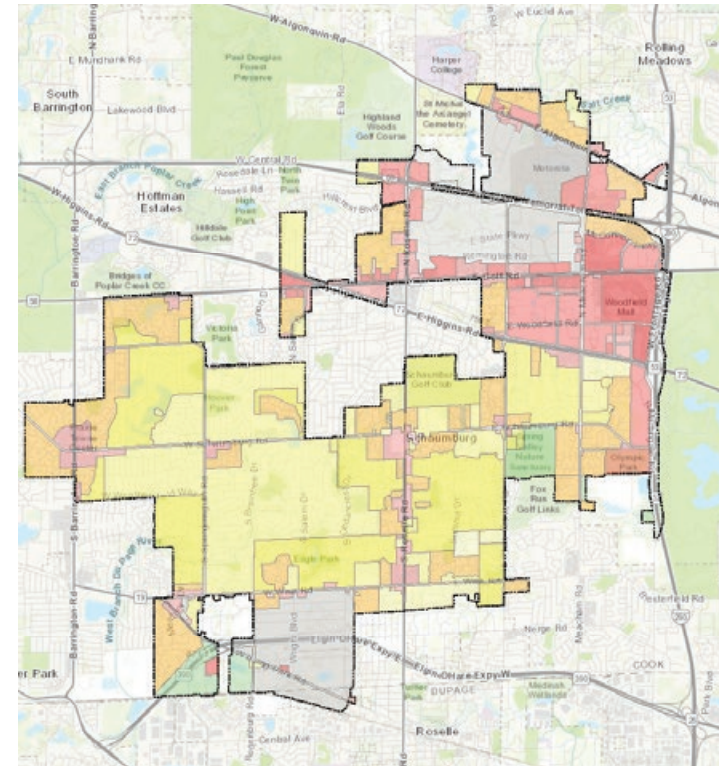
Woodfield Mall	2,151,333 SF
Streets of Woodfield	692,549 SF
Woodfield Village Green	691,574 SF
Woodfield Commons E/W	208,148 SF

Top 10 Major Employers

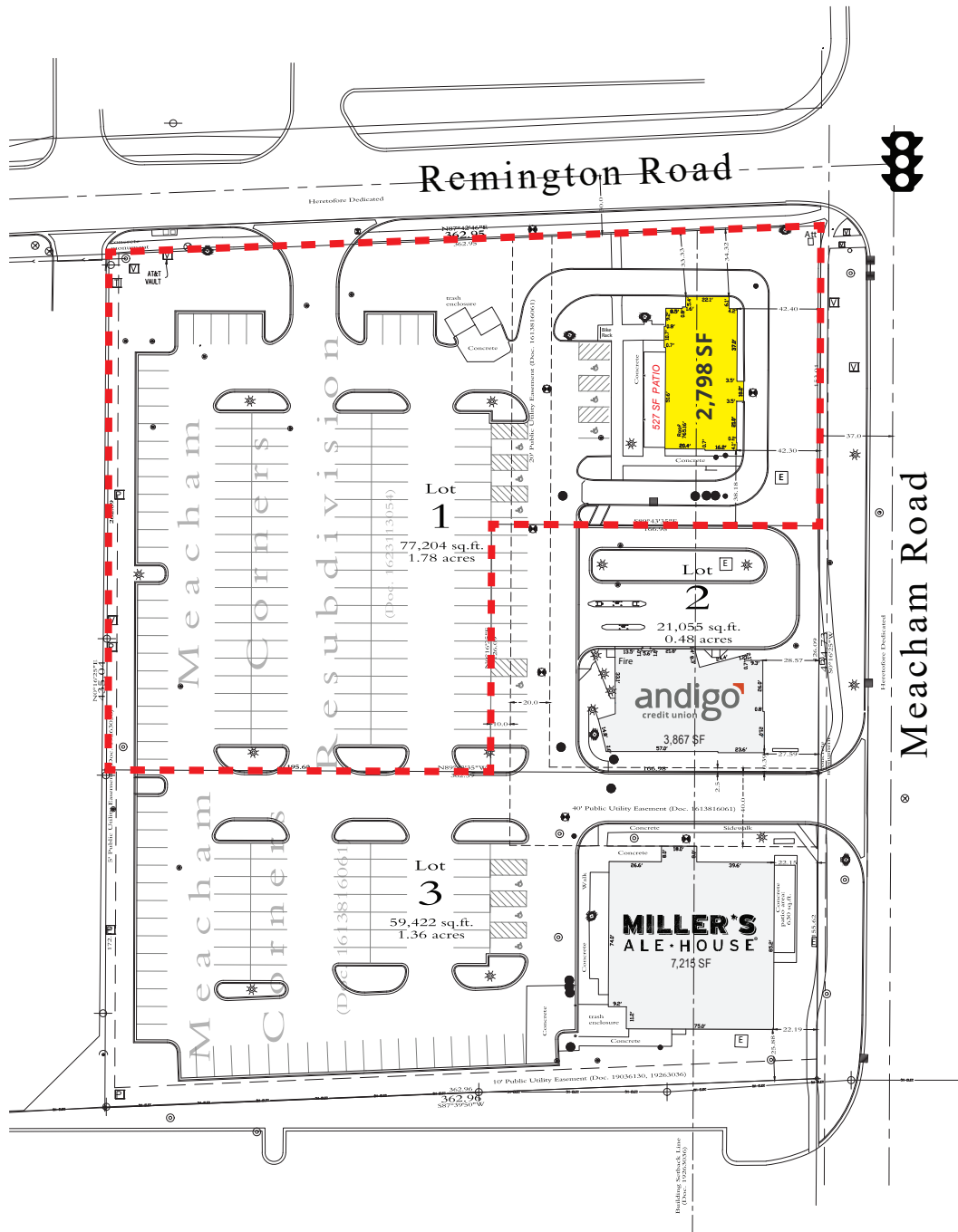
Zurich North American Insurance	2,600
School District 54	2,030
Motorola Solutions	1,600
Perdoceo	1,500
OptumRx	1,300
Genworth Financial Capital	850
Paylocity	700
Nation Pizza Products	800
Friendship Village	650
Village of Schaumburg	600

Colleges/Universities

Harper College
Northwest Suburban College
Robert Morris University
Roosevelt University



Site Plan



Building Size:	2,798 SF
	527 SF Patio
Land:	1.78 AC (77,204 SF)
Parking Stalls:	220
Year Built:	2018



LEASING CONTACTS:

- // JONATHAN HYMAN jhyman@metrocre.com 224.365.8144
- // REUBEN RISCHALL rrischall@metrocre.com 312.560.2224

56 Skokie Valley Road
Highland Park, Illinois 60035

www.MetroCRE.com





Leasing Contacts

Jonathan Hyman

jhyman@metrocre.com
224.365.8144

Reuben Rischall

rrischall@metrocre.com
312.560.2224



WWW.METROCRE.COM