

FOR LEASE

INDUSTRIAL PROPERTY



# 235 ESSEX STREET

WHITMAN, MA 02382

*For More Information*

**BILL KINGDON**

603.560.2710

bill@ellisrealtyadvisors.com



# 235 ESSEX STREET



## PROPERTY DESCRIPTION

10,440 SF high bay drive-in flex/warehouse space in Whitman available for lease. Building features 24' clear heights and is fully sprinklered. Large yard space for outdoor parking and storage. Additional office space available.

## PROPERTY HIGHLIGHTS

- High Bay Warehouse
- Centrally Located - Easy Access to Routes 3, 24, and 44
- Clearspan Warehouse
- Sub-divisible
- Large Fenced Yard

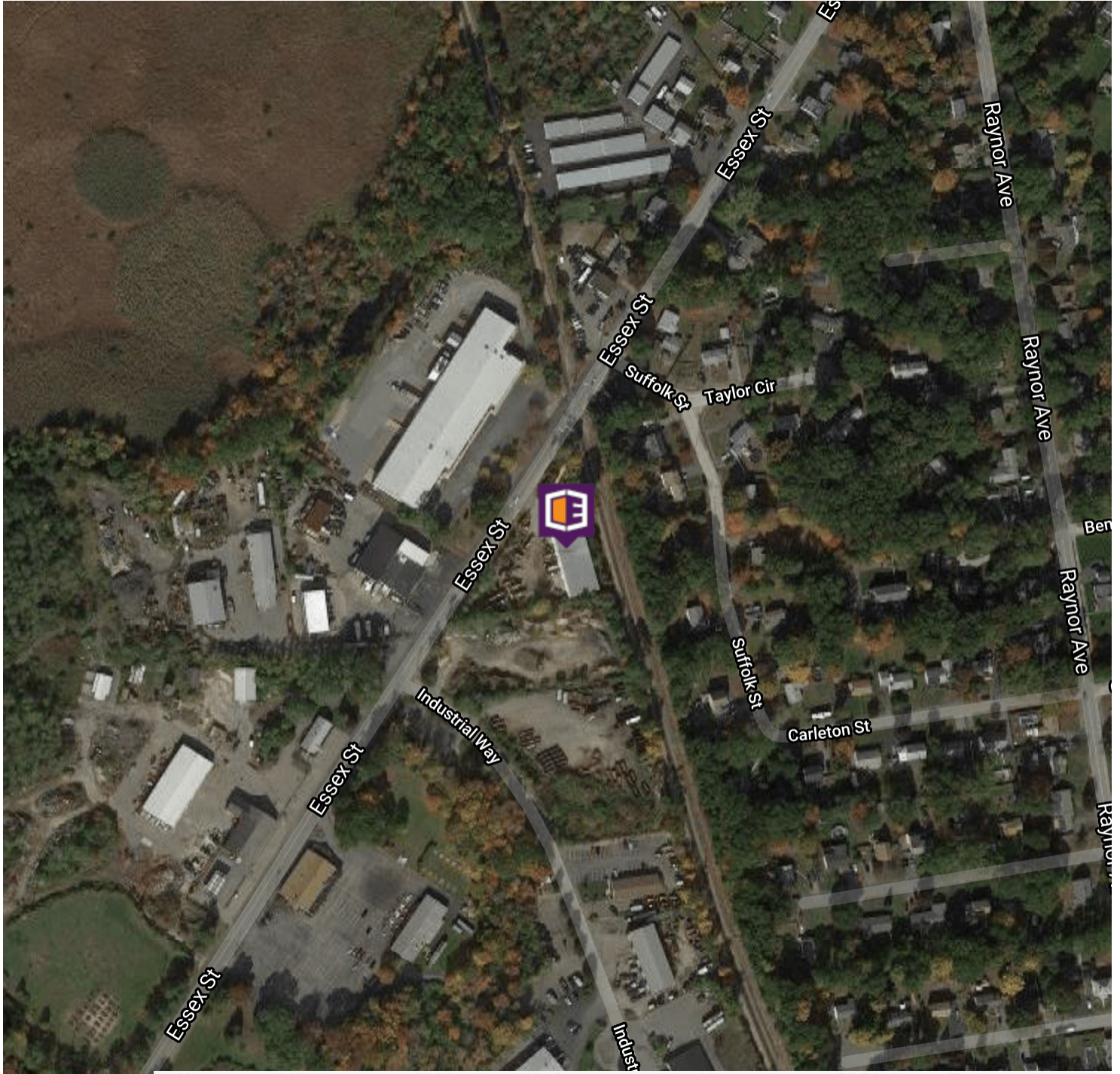
## OFFERING SUMMARY

Lease Rate:	\$12.50 SF/yr (NNN)
Number of Units:	1-2
Available SF:	1,500 - 10,440 SF
Lot Size:	1.18 Acres
Building Size:	10,440 SF

## DEMOGRAPHICS

	1 MILE	3 MILES	5 MILES
Total Households	2,679	16,808	40,691
Total Population	7,455	45,646	111,498
Average HH Income	\$78,832	\$80,283	\$81,825

# 235 ESSEX STREET



Google

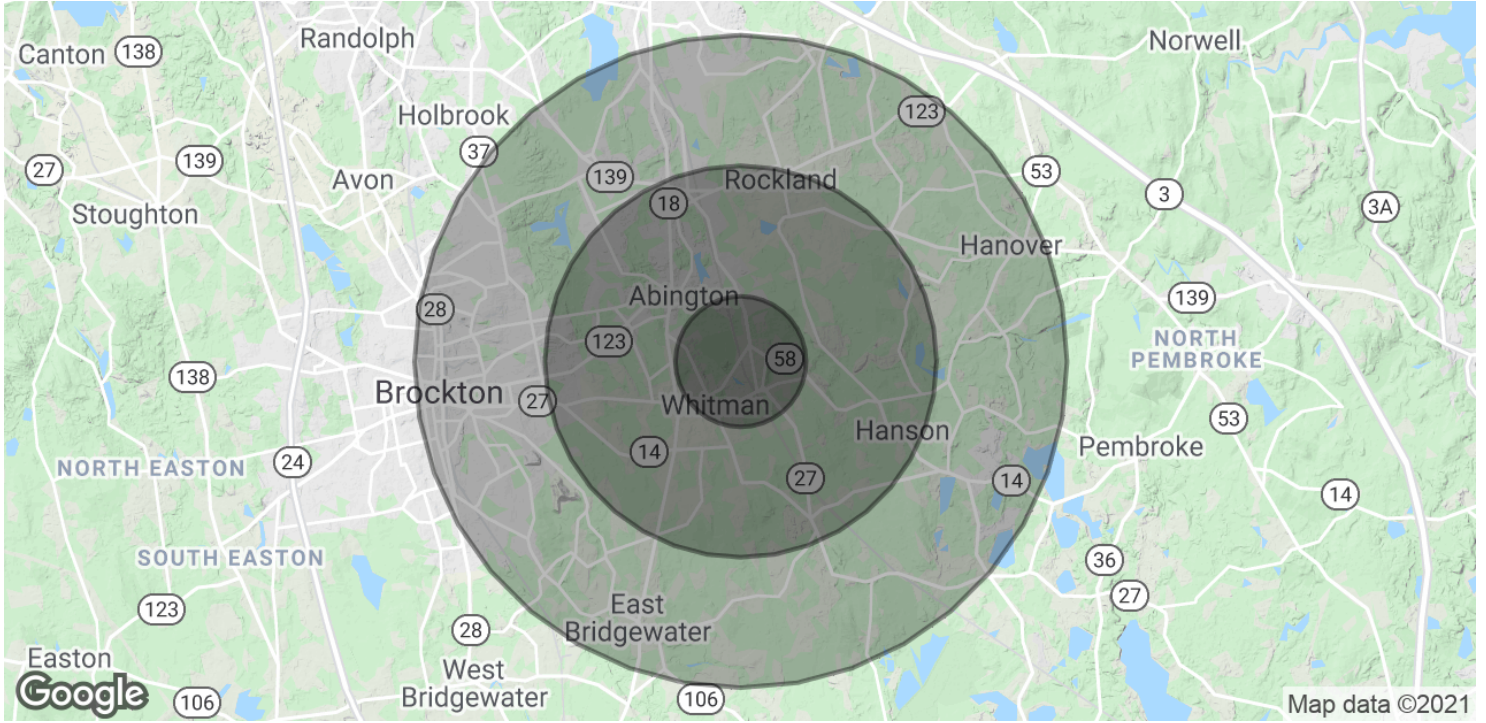
Map data ©2021 Imagery ©2021 , MassGIS, Commonwealth of Massachusetts EOE, Maxar Technologies, USDA Farm Service Agency



**BILL KINGDON**

603.560.2710  
bill@ellisrealtyadvisors.com

# 235 ESSEX STREET



POPULATION	1 MILE	3 MILES	5 MILES
Total Population	7,455	45,646	111,498
Average age	35.7	37.9	38.5
Average age (Male)	33.8	36.4	37.0
Average age (Female)	36.9	38.9	39.8

HOUSEHOLDS & INCOME	1 MILE	3 MILES	5 MILES
Total households	2,679	16,808	40,691
# of persons per HH	2.8	2.7	2.7
Average HH income	\$78,832	\$80,283	\$81,825
Average house value	\$340,686	\$344,110	\$355,484

\* Demographic data derived from 2010 US Census