

**FOR LEASE**

OFFICE BUILDING



# 45 INDUSTRIAL PARK ROAD

45 INDUSTRIAL PARK ROAD, HINGHAM, MA 02043

*For More Information*

**BILL KINGDON**

603.560.2710

bill@ellisrealtyadvisors.com



80 WASHINGTON STREET | NORWELL, MA 02061 | 781.919.0800 | ELLISREALTYADVISORS.COM

# 45 INDUSTRIAL PARK ROAD



## PROPERTY DESCRIPTION

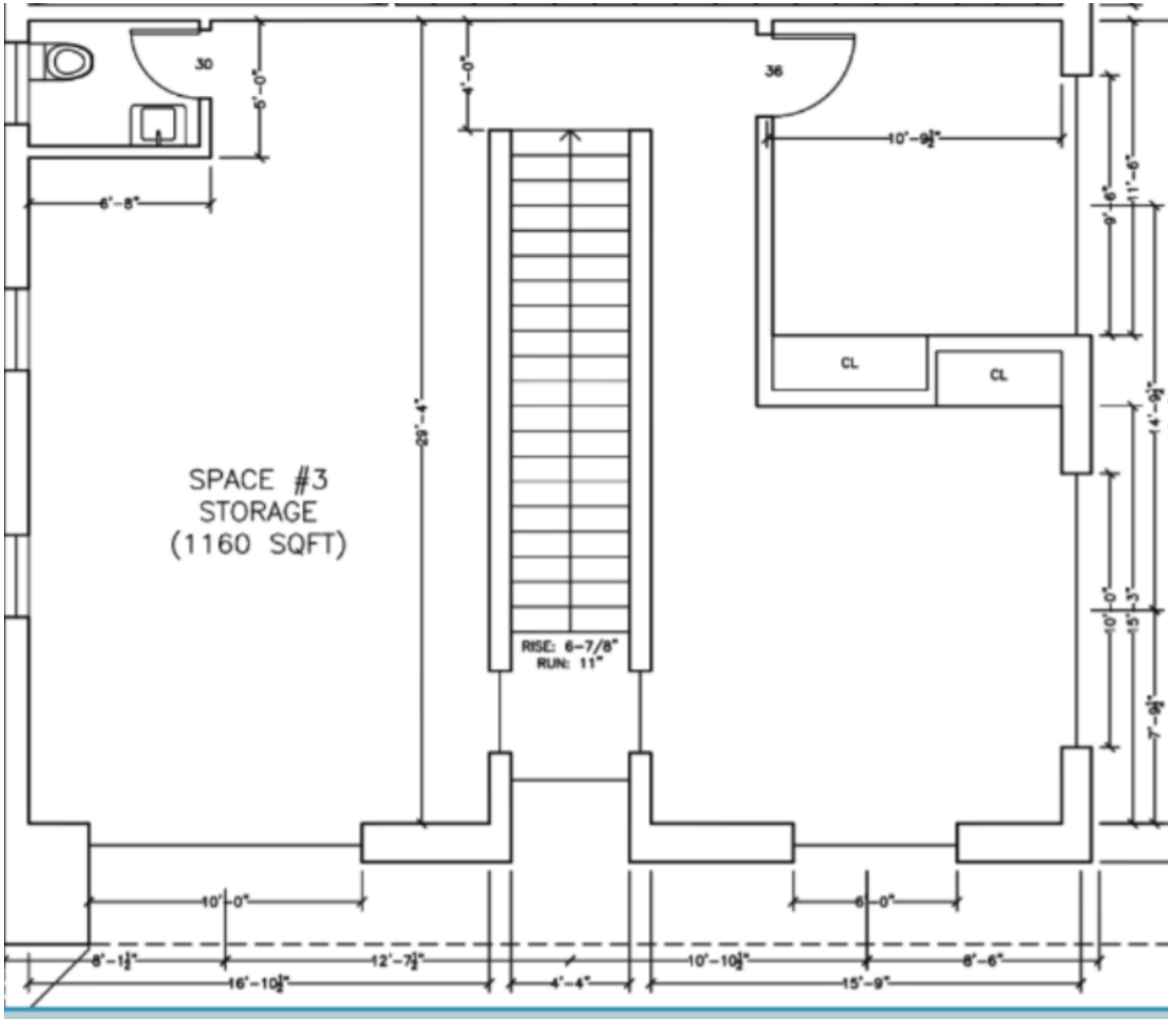
Now available, prime 1160 square foot office suite in the South Shore Park. Conveniently located at exit 15 off Route 3, this building was recently given a full face-lift. Available suite is in the new portion of the building which was just built in 2019. Space has high exposed ceilings with large windows providing for ample natural light throughout. Available immediately.

## OFFERING SUMMARY

Lease Rate:	\$2,400.00 per month (MG)
Available SF:	1,160 SF
Lot Size:	
Building Size:	13,000 SF

DEMOGRAPHICS	1 MILE	5 MILES	10 MILES
Total Households	1,528	52,600	187,931
Total Population	3,695	132,846	482,736
Average HH Income	\$98,659	\$93,540	\$84,225

# 45 INDUSTRIAL PARK ROAD



# 45 INDUSTRIAL PARK ROAD

