

165 WASHINGTON STREET



OFFERING SUMMARY

Lease Rate:	\$20.00 SF/yr (NNN)
Building Size:	5,600 SF
Available SF:	2,612 SF
Lot Size:	0.31 Acres
Year Built:	1960
Zoning:	BUSB
Market:	Boston
Submarket:	Quincy/Braintree

PROPERTY OVERVIEW

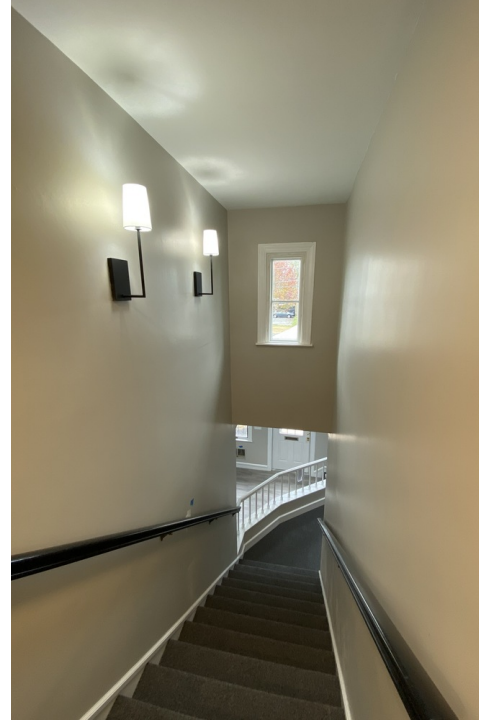
Available for lease 2,612 square feet of office/medical space at 165 Washington Street in Quincy. Second generation dental space makes it perfect for a dental practice looking to expand, or can easily be re-purposed for another medical or standard office use. Pylon signage on Washington Street. Planned improvements to building facade and landscaping forthcoming.

PROPERTY HIGHLIGHTS

- Full Building Renovations
- Quincy Center Location
- Bus Line
- Quincy Center T
- Medical or Professional Office
- Off-Street Parking

ADDITIONAL PHOTOS

165 WASHINGTON STREET



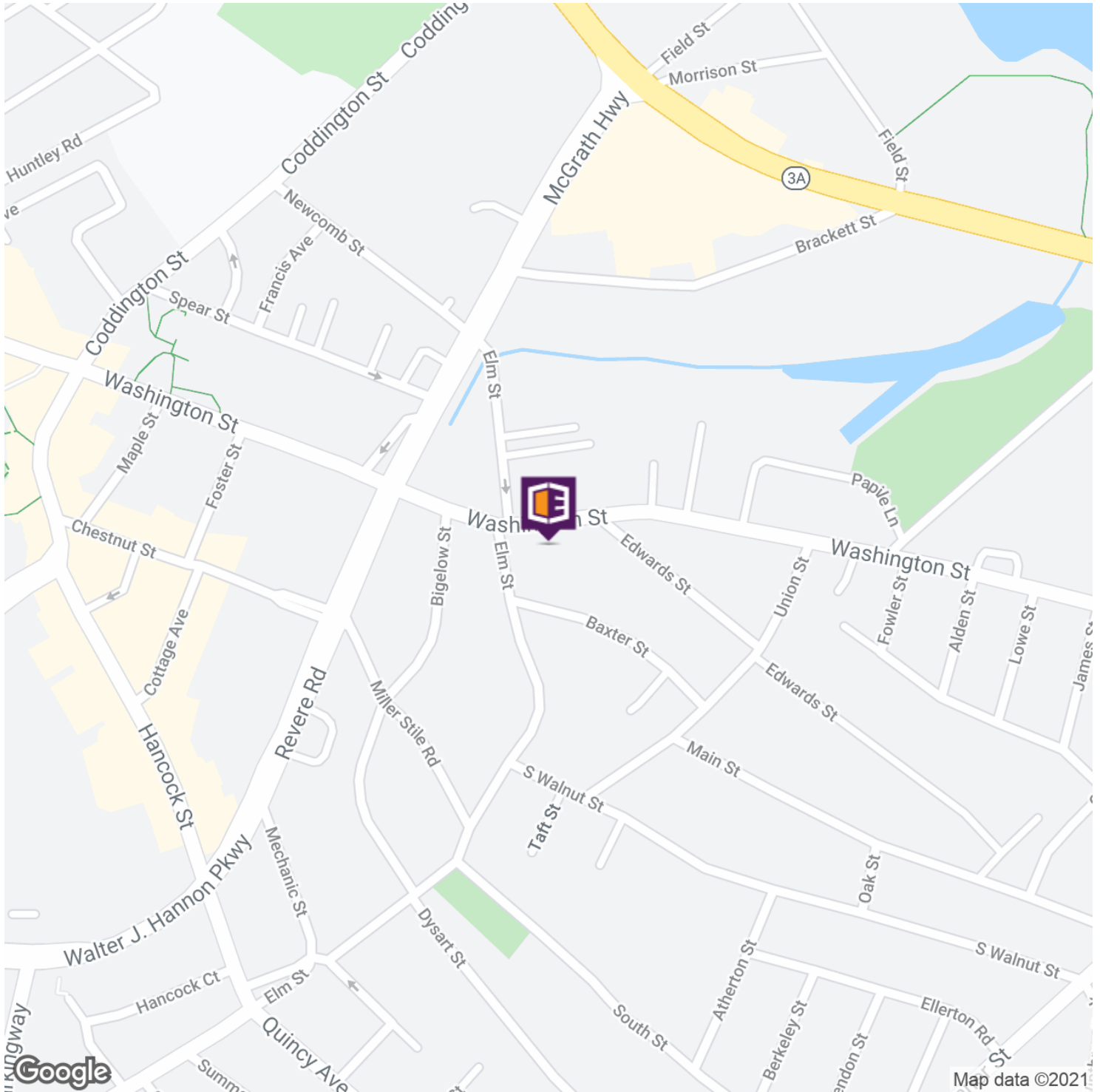
DAVE ELLIS

781.919.0800 x701
dave@ellisrealtyadvisors.com

BILL KINGDON

603.560.2710
bill@ellisrealtyadvisors.com

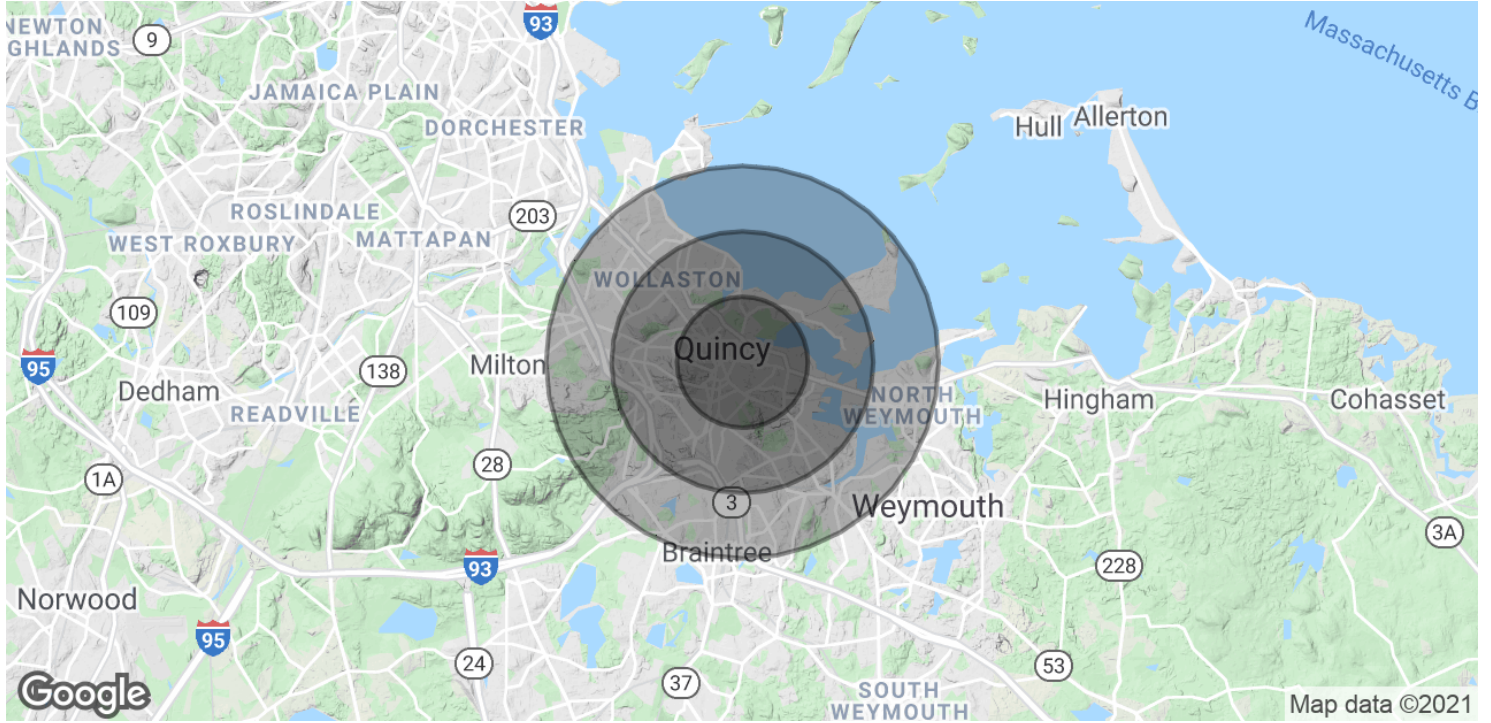
165 WASHINGTON STREET



DAVE ELLIS
781.919.0800 x701
dave@ellisrealtyadvisors.com

BILL KINGDON
603.560.2710
bill@ellisrealtyadvisors.com

165 WASHINGTON STREET



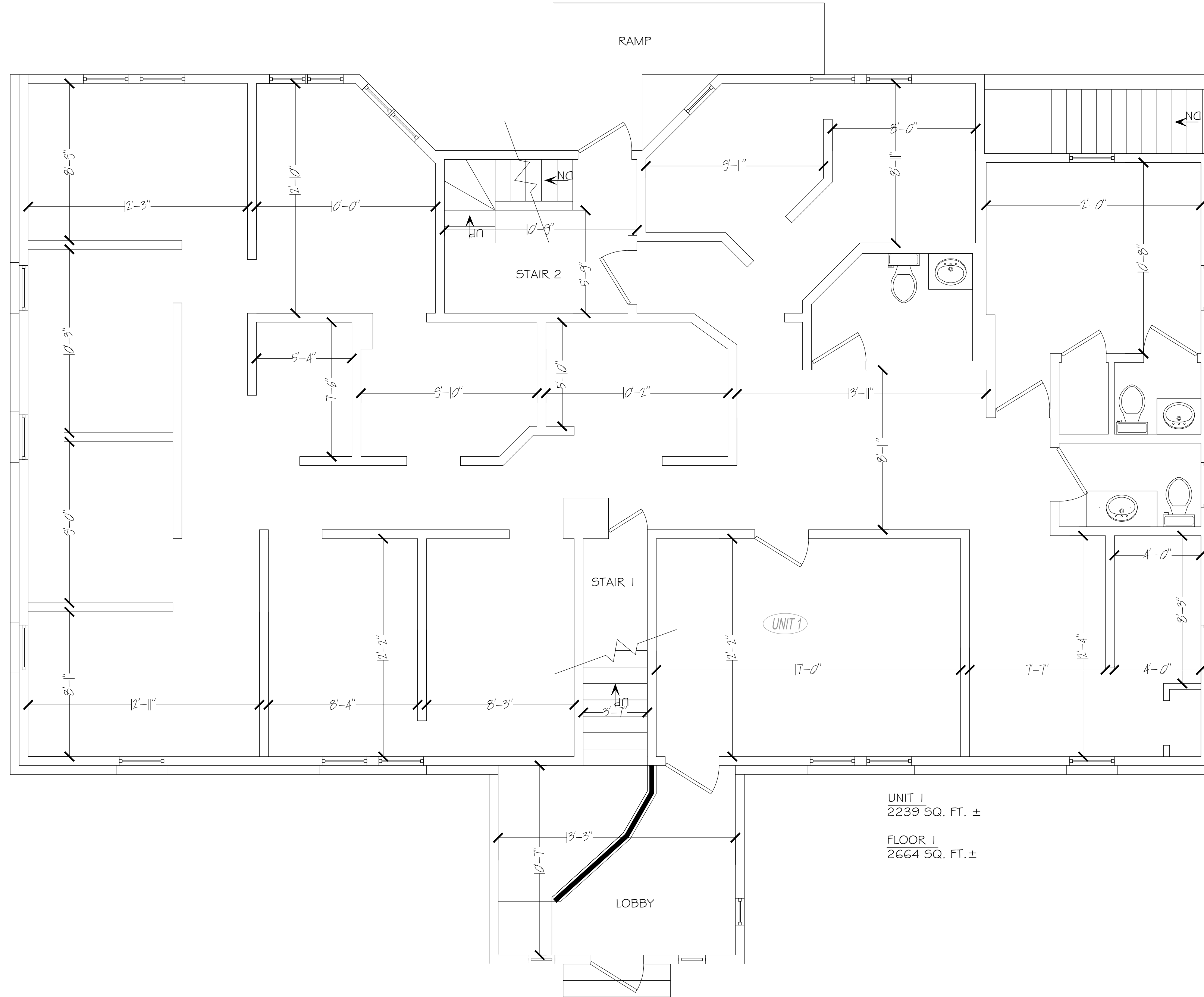
POPULATION	1 MILE	2 MILES	3 MILES
Total Population	23,142	65,215	116,081
Median age	41.1	39.3	39.1
Median age (Male)	38.8	37.8	37.5
Median age (Female)	42.6	40.4	40.2
HOUSEHOLDS & INCOME	1 MILE	2 MILES	3 MILES
Total households	11,347	30,130	50,008
# of persons per HH	2.0	2.2	2.3
Average HH income	\$66,839	\$68,482	\$73,377
Average house value	\$342,966	\$355,343	\$377,921

* Demographic data derived from 2010 US Census



DAVE ELLIS
 781.919.0800 x701
 dave@ellisrealtyadvisors.com

BILL KINGDON
 603.560.2710
 bill@ellisrealtyadvisors.com



UNIT 1
2239 SQ. FT. ±
FLOOR 1
2664 SQ. FT. ±

FIRST FLOOR PLAN
SCALE: 1/4" = 1'-0"

165 WASHINGTON ST.
QUINCY, MA 02169

DATE: 4-29-19
DRAWN BY: LFH DRAFTING
SCALE: 1/4" = 1'-0"

1ST FLOOR PLAN

A1

