

FOR LEASE

RETAIL PROPERTY



THE SHOPPES AT LONG POND

67 LONG POND ROAD, PLYMOUTH, MA 02360

For More Information

DAVE ELLIS

781.919.0800 x701
dave@ellisrealtyadvisors.com



80 WASHINGTON STREET | NORWELL, MA 02061 | 781.919.0800 | ELLISREALTYADVISORS.COM

THE SHOPPES AT LONG POND



PROPERTY DESCRIPTION

Shoppes at Long Pond is a 17,267 SF Retail Center with prominent exposure on Long Pond Road in Plymouth, MA. The center offers 6.3 spaces per 1,000 SF and strong demographics including \$107,000+ HH Income (3 Mile). Located within 1/4 mile of Route 3/Exit 13, the Center sits opposite from the signalized intersection of The Grove.

PROPERTY HIGHLIGHTS

- Signalized Intersection
- Strong Demographics
- 20,000 + Traffic Counts
- 6.3 Spaces per 1,000 SF
- Built in 2007

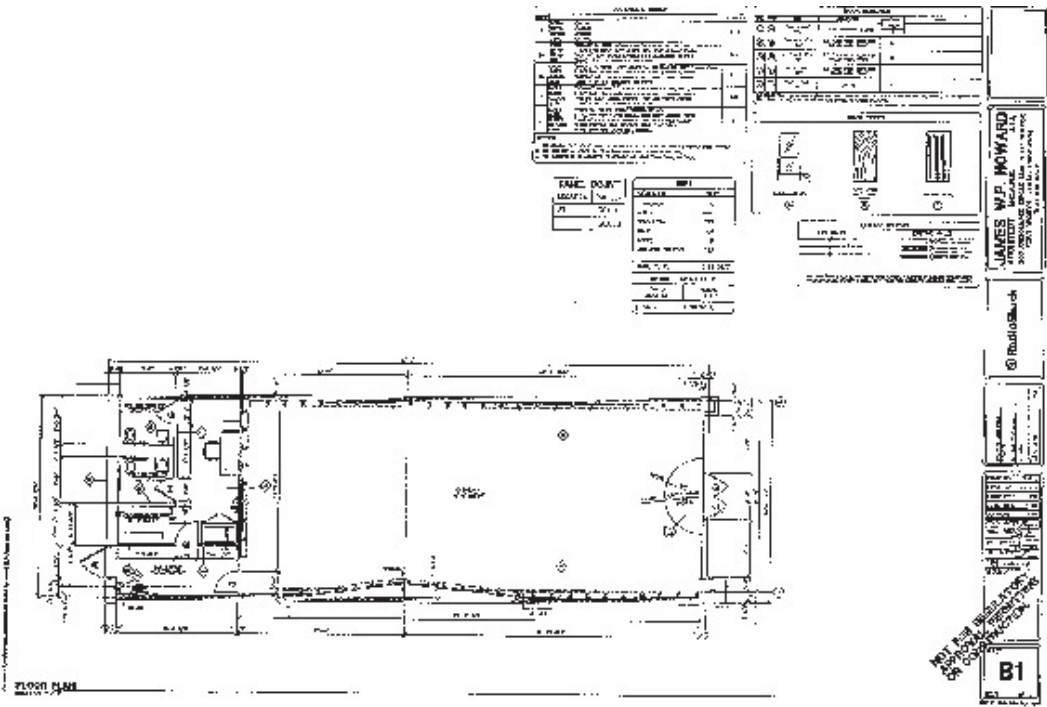
OFFERING SUMMARY

Lease Rate:	Negotiable
Number of Units:	1
Available SF:	2,114 SF
Lot Size:	3 Acres
Building Size:	17,267 SF

DEMOGRAPHICS	1 MILE	5 MILES	10 MILES
Total Households	550	11,020	34,863
Total Population	1,470	28,489	94,667
Average HH Income	\$78,966	\$83,925	\$95,616

THE SHOPPES AT LONG POND

EXHIBIT "B-1"
TENANT'S FLOOR PLAN



LEASE INFORMATION

Lease Type:	NNN	Lease Term:	Negotiable
Total Space:	2,114 SF	Lease Rate:	Negotiable

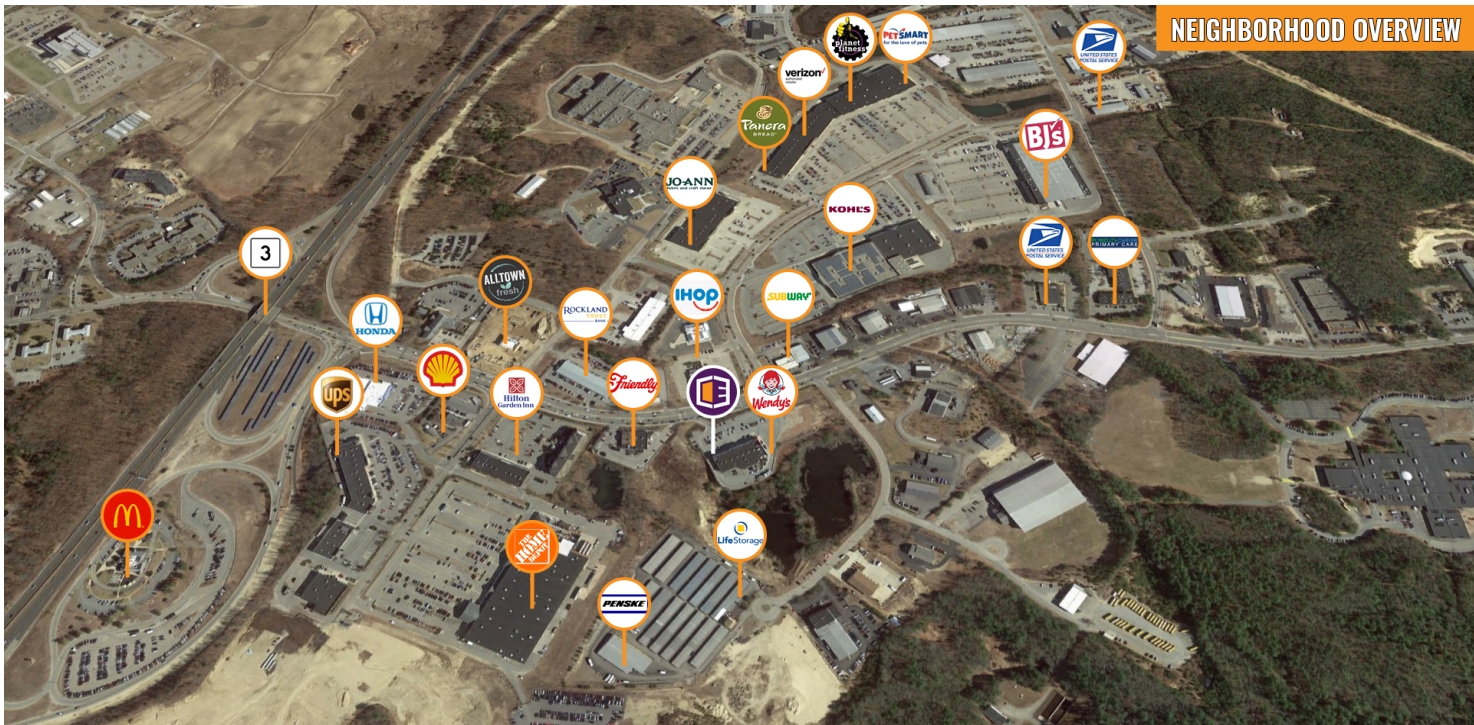
AVAILABLE SPACES

SUITE	TENANT	SIZE (SF)	LEASE TYPE	LEASE RATE	DESCRIPTION
67 Long Pond Road	Available	2,114 SF	NNN	Negotiable	CAM/SF = 4.5 Tax/SF = 2.85

THE SHOPPES AT LONG POND



THE SHOPPES AT LONG POND



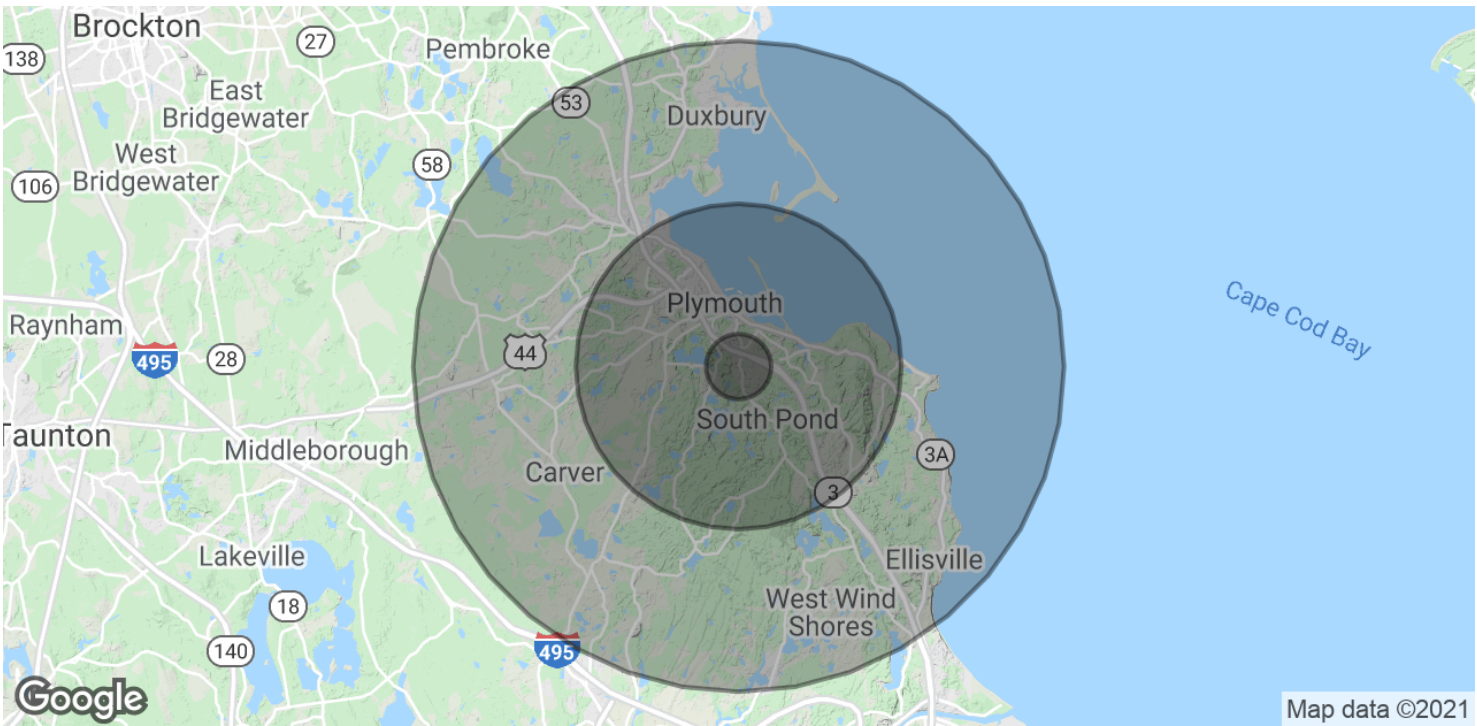
NEIGHBORHOOD OVERVIEW



67 Long Pond Road, Plymouth, MA 02360
2,114 SF Available Retail - Strip Center

ELLIS REALTY
ADVISORS

THE SHOPPES AT LONG POND



POPULATION	1 MILE	5 MILES	10 MILES
Total Population	1,470	28,489	94,667
Average age	42.0	42.1	41.7
Average age (Male)	41.0	41.0	40.7
Average age (Female)	43.5	43.1	42.5
HOUSEHOLDS & INCOME	1 MILE	5 MILES	10 MILES
Total households	550	11,020	34,863
# of persons per HH	2.7	2.6	2.7
Average HH income	\$78,966	\$83,925	\$95,616
Average house value		\$344,782	\$406,593

* Demographic data derived from 2010 US Census