



**BERKSHIRE
HATHAWAY**

HomeServices

Florida Properties Group

COMMERCIAL DIVISION

Commercial Site with Monopole

Ridge Road & Grave Avenue, New Port Richey, FL 34654



For Sale

- Located east of the Ridge Road & Little Road intersection
- Six lots totaling over 1.3 acres
- 300± feet of frontage on busy Ridge Road
- East and west-bound median cuts for ease of access
- Monopole advertising sign (included) creates positive cash flow
- Zoned C-2 General Commercial
- Offered Sale Price: \$350,000



JOHN BRASHER

Sales Associate

jbrasher@bhhsflpg.com

813-514-8133

Awarded #3 Producing Berkshire Hathaway Commercial Real Estate Company Worldwide 2018

Teamwork | Integrity | Passion | Excellence

7916 Evolutions Way, Suite 210, Trinity, FL 34655 | 4950 West Kennedy Boulevard, Suite 300, Tampa, FL 33609

Fax 813.739.5703 | bhhsflpgcommercial.com

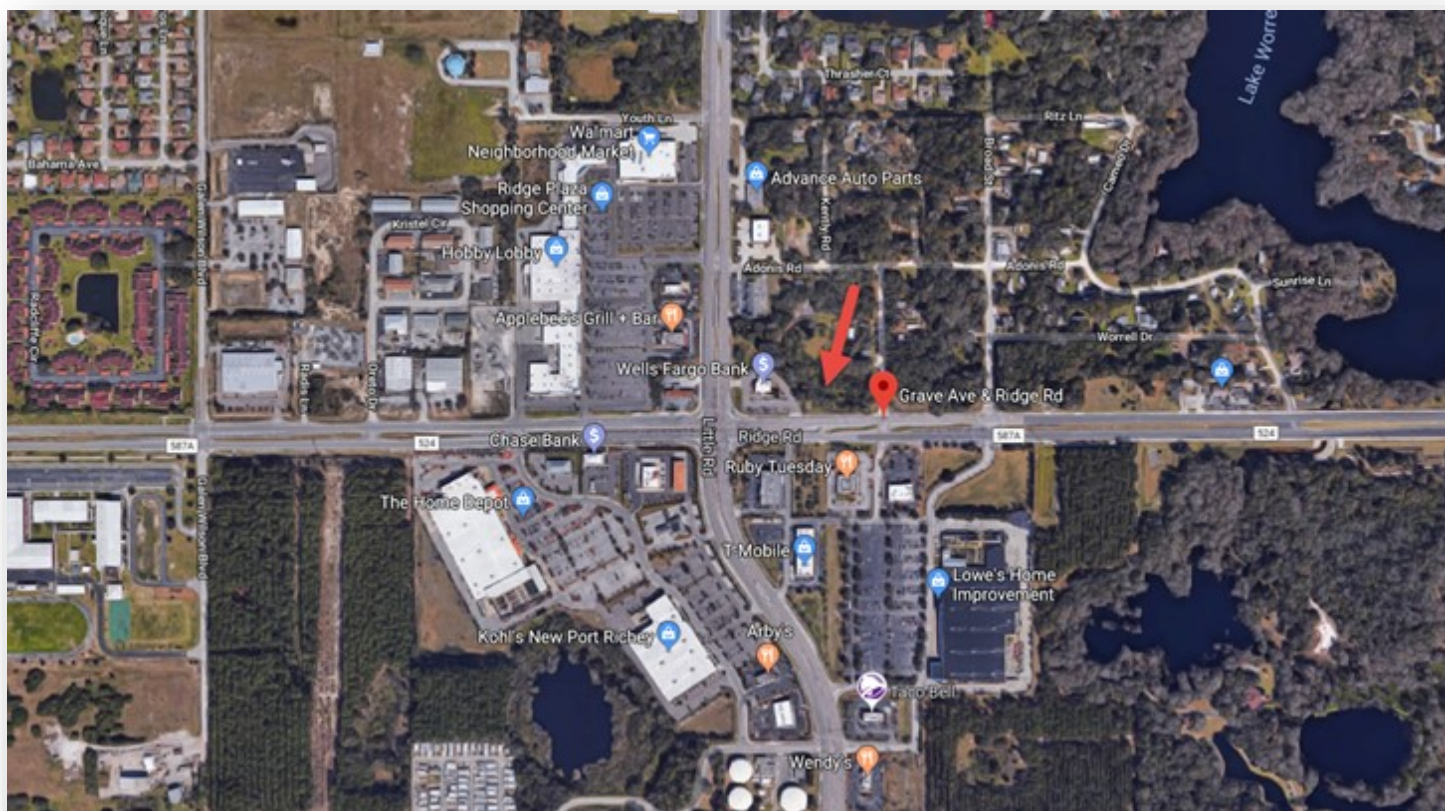


BERKSHIRE HATHAWAY
HomeServices
Florida Properties Group

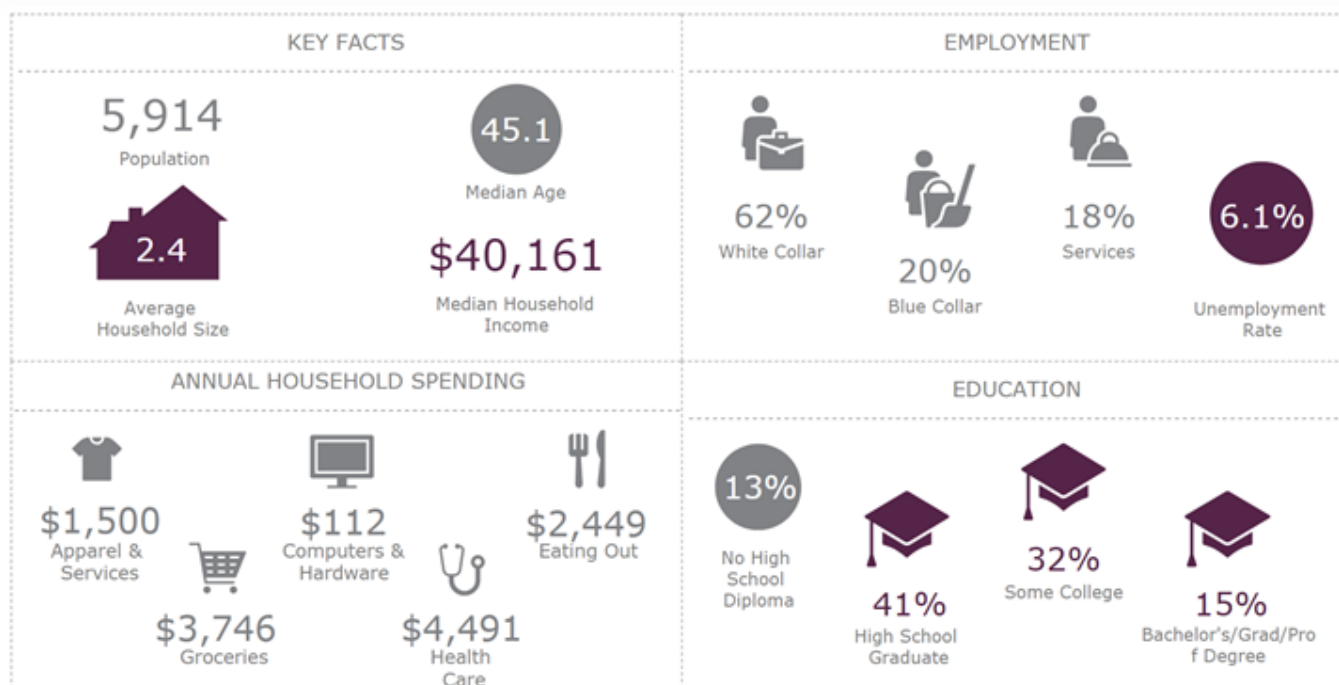
COMMERCIAL DIVISION

Commercial Site with Monopole

Ridge Road & Grave Avenue, New Port Richey, FL 34654



AREA DEMOGRAPHICS (5 MILE RADIUS)



This information is from sources deemed to be reliable. We are not responsible for misstatements of facts, errors or omissions, prior sale, change of price, and/or terms or withdrawal from the market without notice. Buyer should verify all information with its' own representatives as well as state and local agencies. Brokers please note that a variable rate commission may exist on this offering that might result in a lower commission cost to the Seller if a Buyer's broker is not involved in the transaction. ©2019 BHH Affiliates, LLC. An independently owned and operated franchisee of BHH Affiliates, LLC. Berkshire Hathaway HomeServices and the Berkshire Hathaway HomeServices symbol are registered service marks of HomeServices of America, Inc.® Equal Housing Opportunity.