



# THE OFFICES AT MEETING PARK

PROFESSIONAL  
OFFICE SPACE  
AVAILABLE

218 + 234  
ROSWELL  
STREET

MARIETTA, GA 30060

404.252.1200

[www.skcr.com](http://www.skcr.com)

# PROPERTY OVERVIEW



## AVAILABILITY:

### 218 ROSWELL STREET: 3,961 Total SF

- First Floor - LEASED
- Second Floor - 3,961 SF Office
- Third Floor - 3,961 SF Residential

### 234 ROSWELL STREET: 1,400 - 4,066 Total SF

- First Floor - 2,666 SF Office
- Second Floor - 1,400 SF Office
- Third Floor - LEASED

## FEATURES:

- Building Signage Opportunity
- Newly Built Office / Professional Space For Lease
- Parking Ratio - 3 / 1,000
- Excellent Location to Marietta Square and surrounding amenities

234 ROSWELL STREET - BUILDING B



218 + 234 ROSWELL STREET

## RENDERINGS

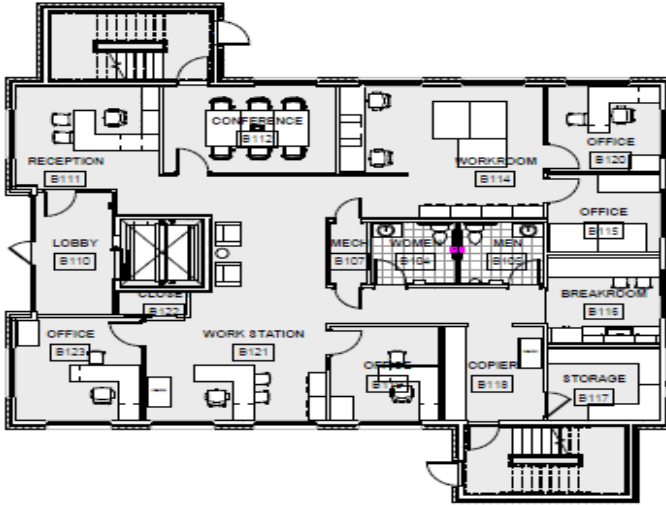
218 ROSWELL STREET - BUILDING A



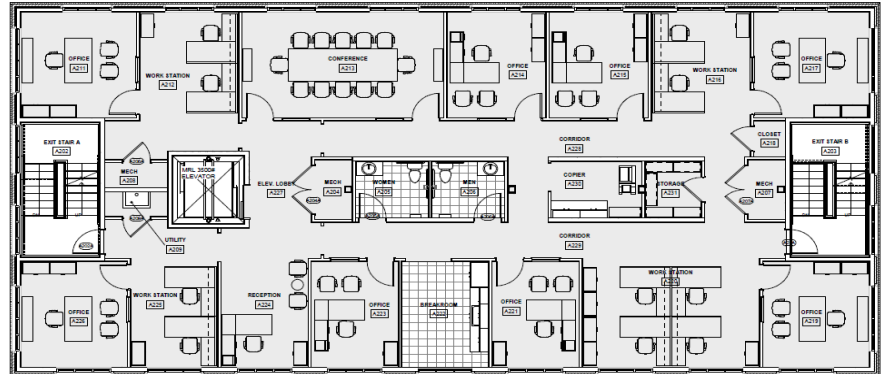
# THE OFFICES AT MEETING PARK

## FLOOR PLANS

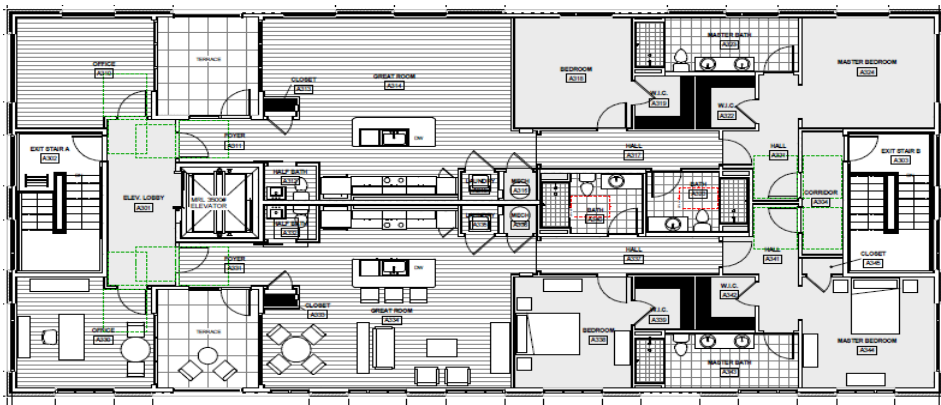
### 234 ROSWELL- FIRST FLOOR: 2,666 SF



### 218 ROSWELL-SECOND FLOOR:3,961 SF



### 218 ROSWELL - THIRD FLOOR : RESIDENTIAL



**218+234 ROSWELL STREET | 1,400-4,066 RSF**  
**OFFICE SPACE**  
MARIETTA, GA 30060

TOM KIRBO 678.429.5849 tkirbo@skcr.com  
LAND WRIGHT 404.668.8211 lwright@skcr.com



# THE OFFICES AT MEETING PARK

SITE PLAN SURVEY



**218 + 234 ROSWELL STREET | FOR LEASE**

MARIETTA, GA 30060

TOM KIRBO 678.429.5849 tkirbo@skcr.com  
LAND WRIGHT 404.668.8211 lwright@skcr.com

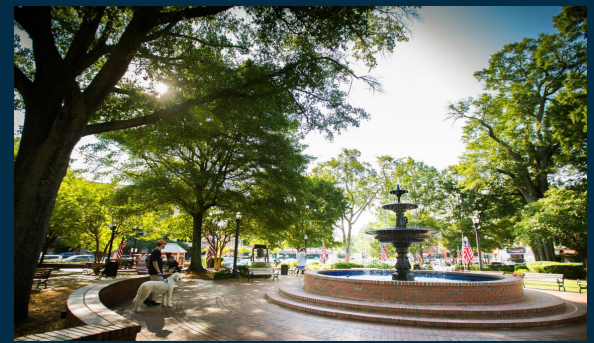


# LOCATION OVERVIEW



## AREA AMENITIES

- Walkable location to Historic Marietta Square + downtown Marietta
- Numerous nearby amenities including restaurants, hotels, banks, and shopping
- Ample Parking
- Easy access to I-75 and I-285
- Conveniently located Cobb Galleria, Cumberland Mall, Truist Park, and The Battery Atlanta



**TOM KIRBO**  
678.429.5849

tkirbo@skcr.com

**LAND WRIGHT**  
404.668.8211

lwright@skcr.com