

27,000 SF Office Space | White Pond Crossing



544 White Pond Dr.
Akron, Ohio

Property Features

- Available for lease: 27,000 SF
12,000 SF 1st floor
15,000 SF 2nd floor
- Total building size: 42,000 SF
- Full panel windows to provide an abundance of natural light
- Property campus has restaurant on site
- Freeway access & visibility
- Located on White Pond Dr., Akron, OH
- Strategically located seconds from I-77 & I-76, minutes from I-71 & I-271
- New construction building erected in 2020



Stacy Tramonte

330 590 8248 • STramonte@pvccinc.com

Barbara Faciana

330 590 8230 • BFaciana@pvccinc.com

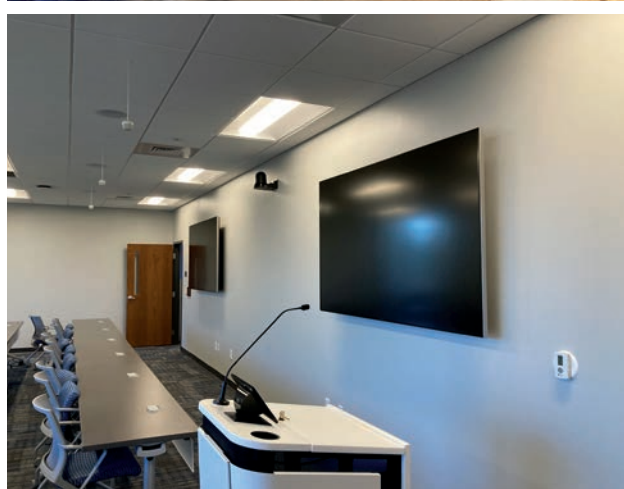
NO WARRANTY OR REPRESENTATION, EXPRESS OR IMPLIED, IS MADE AS TO THE ACCURACY OF THE INFORMATION CONTAINED HEREIN, AND THE SAME IS SUBMITTED SUBJECT TO ERRORS, OMISSIONS, CHANGE OF PRICE, RENTAL OR OTHER CONDITIONS, PRIOR SALE, LEASE OR FINANCING, OR WITHDRAWAL WITHOUT NOTICE, AND OF ANY SPECIAL LISTING CONDITIONS IMPOSED BY OUR PRINCIPALS NO WARRANTIES OR REPRESENTATIONS ARE MADE AS TO THE CONDITION OF THE PROPERTY OR ANY HAZARDS CONTAINED THEREIN ARE ANY TO BE IMPLIED.

6155 Rockside Road, Suite 304
Independence, Ohio 44131
216 831 3310

naipvc.com

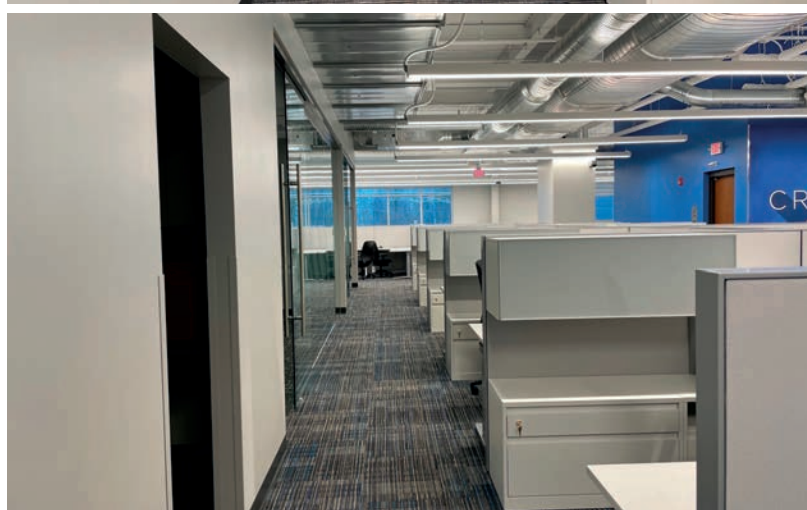
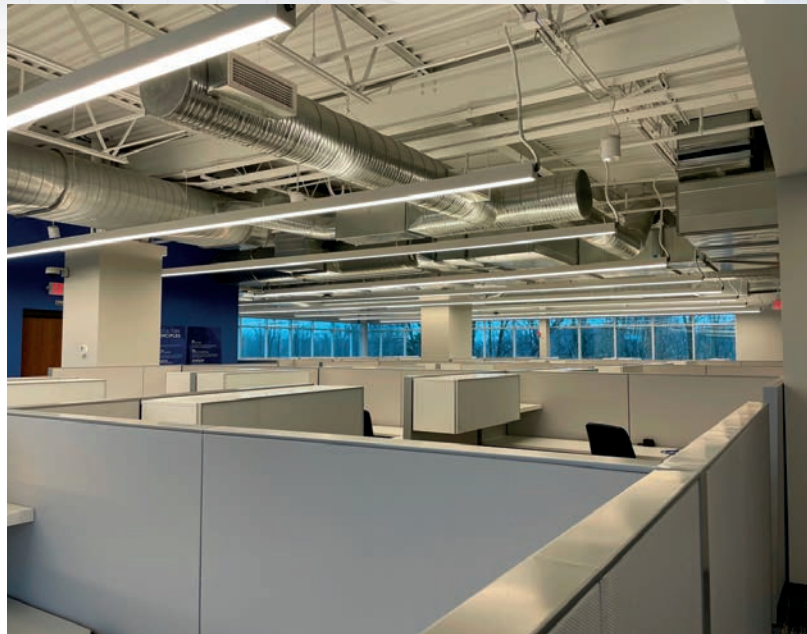


PHOTOS

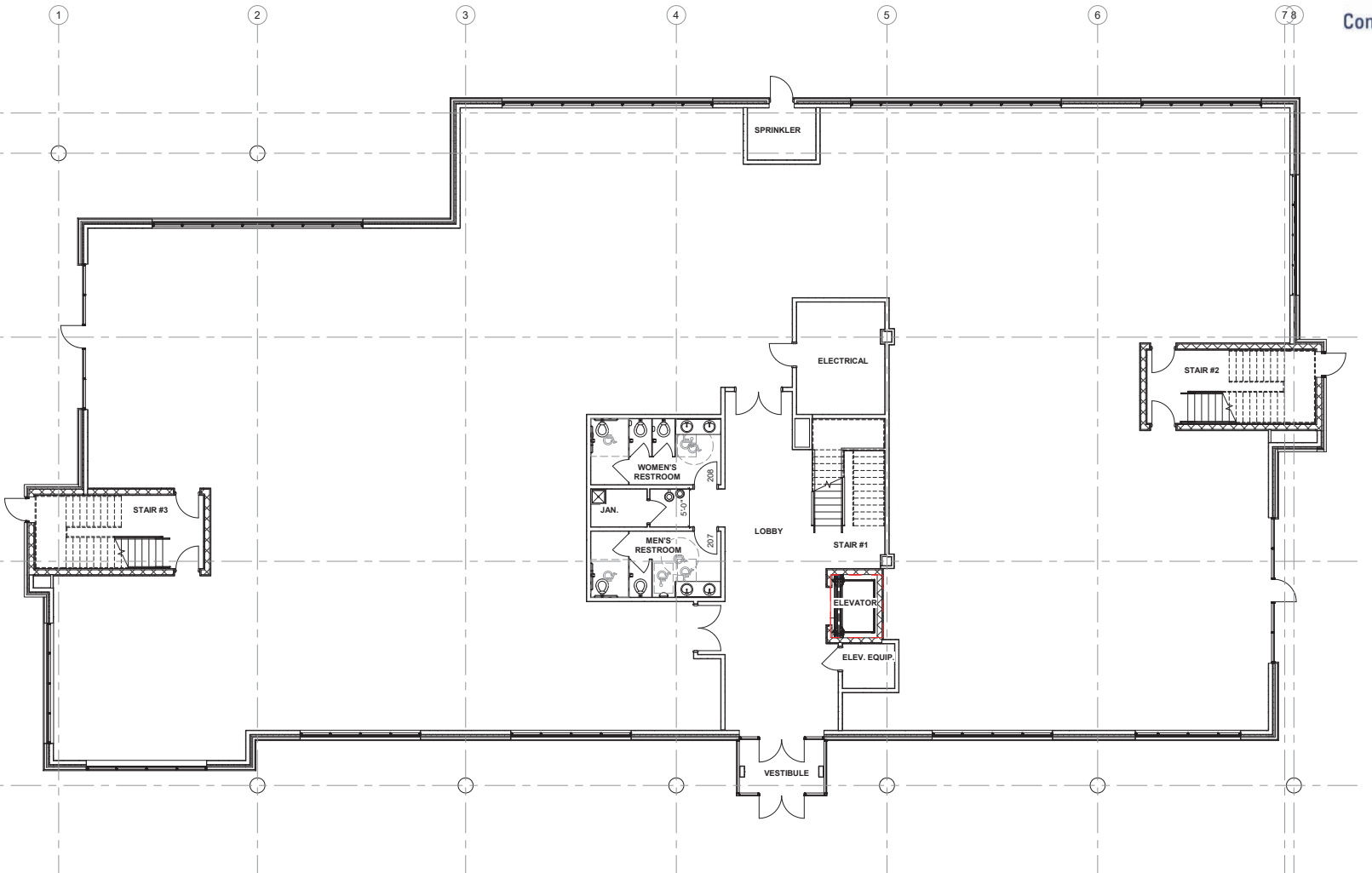


544

PHOTOS

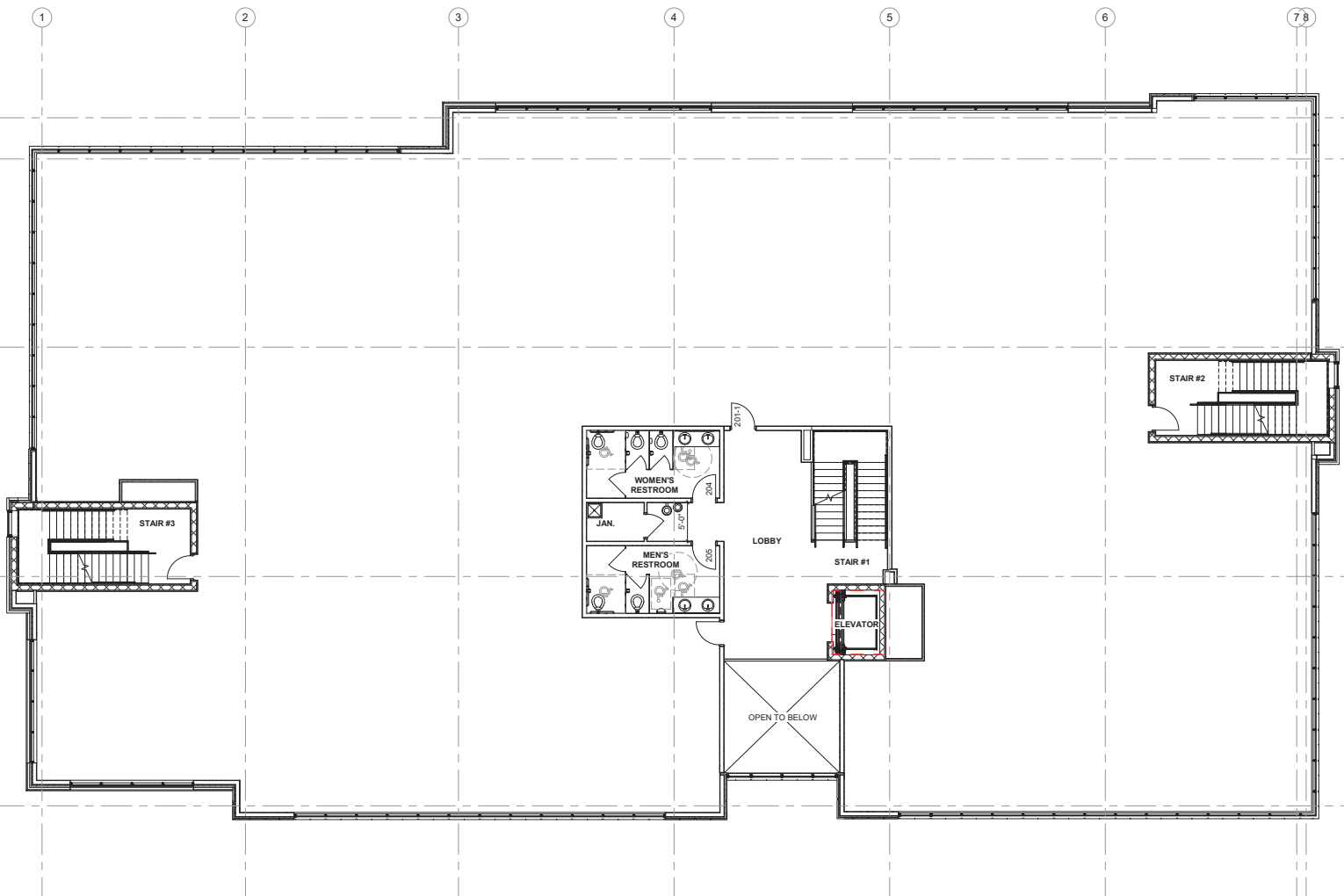


1st FLOOR FLOOR PLAN



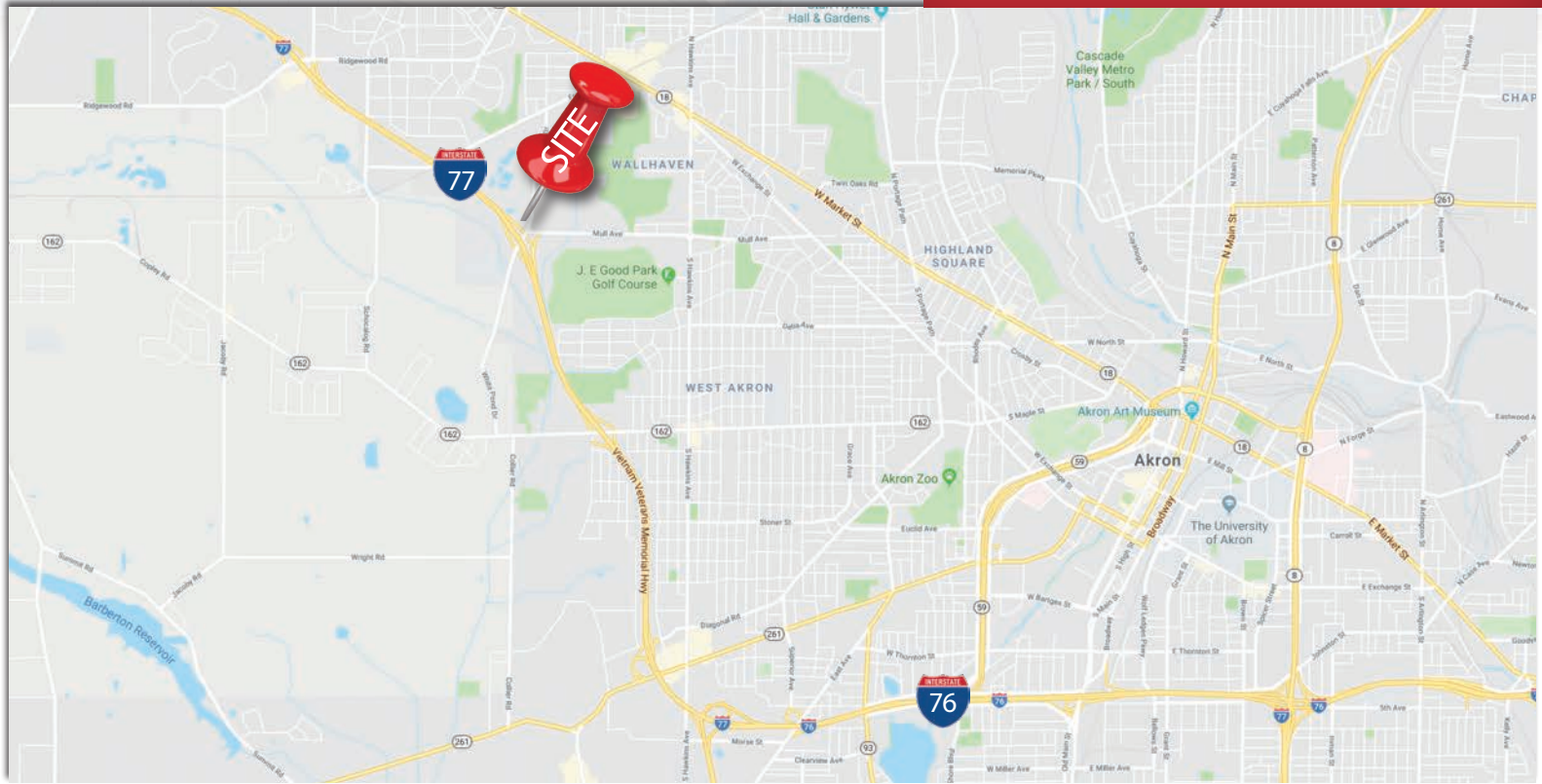
2nd FLOOR FLOOR PLAN

544



544

LOCATION



Stacy Tramonte
330 590 8248 • STramonte@pvccinc.com

Barbara Faciana
330 590 8230 • BFaciana@pvccinc.com

NAIPleasant Valley

6155 Rockside Road, Suite 304
Independence, Ohio 44131
216 831 3310
naipvc.com

1 MILE DEMOGRAPHICS

KEY FACTS

4,824

Population



1.9

Average
Household Size

45.1

Median Age

\$46,244

Median Household
Income

EDUCATION

12%

No High School
Diploma



20%

High School
Graduate



29%

Some College



38%

Bachelor's/Grad/Pr
of Degree

BUSINESS



183

Total Businesses



2,177

Total Employees

EMPLOYMENT



77%

White Collar



13%

Blue Collar



11%

Services

16.8%

Unemployment
Rate

INCOME



\$46,244

Median Household
Income



\$33,982

Per Capita Income



\$20,670

Median Net Worth

Households By Income

The largest group: <\$15,000 (19.3%)

The smallest group: \$150,000 - \$199,999 (2.5%)

Indicator	Value	Difference	
<\$15,000	19.3%	+9.2%	
\$15,000 - \$24,999	13.9%	+4.3%	
\$25,000 - \$34,999	8.4%	-0.4%	
\$35,000 - \$49,999	10.5%	-2.5%	
\$50,000 - \$74,999	18.4%	+0.6%	
\$75,000 - \$99,999	14.3%	-0.2%	
\$100,000 - \$149,999	8.2%	-7.2%	
\$150,000 - \$199,999	2.5%	-3.0%	
\$200,000+	4.5%	-0.9%	

Bars show deviation from
Summit County

This infographic contains data provided by Esri, Esri and Infogroup. The vintage of the data is 2020, 2025.

© 2020 Esri

Stacy Tramonte

330 590 8248 • STramonte@pvccinc.com

Barbara Faciana

330 590 8230 • BFaciana@pvccinc.com

NAI Pleasant Valley

6155 Rockside Road, Suite 304
Independence, Ohio 44131
216 831 3310
naipvc.com

3 MILE DEMOGRAPHICS

KEY FACTS

65,528

Population



2.2

Average
Household Size

43.7

Median Age

\$53,550

Median Household
Income

EDUCATION

6%

No High School
Diploma



24%

High School
Graduate



31%

Some College



38%

Bachelor's/Grad/Pr
of Degree

BUSINESS



2,101

Total Businesses



23,451

Total Employees

EMPLOYMENT



74%

White Collar



15%

Blue Collar



11%

Services

16.1%

Unemployment
Rate

INCOME



\$53,550

Median Household
Income



\$33,579

Per Capita Income



\$66,970

Median Net Worth

Households By Income

The largest group: \$50,000 - \$74,999 (17.0%)

The smallest group: \$150,000 - \$199,999 (4.5%)

Indicator	Value	Difference	
<\$15,000	14.3%	+4.2%	
\$15,000 - \$24,999	10.5%	+0.9%	
\$25,000 - \$34,999	9.3%	+0.5%	
\$35,000 - \$49,999	12.5%	-0.5%	
\$50,000 - \$74,999	17.0%	-0.8%	
\$75,000 - \$99,999	13.0%	-1.5%	
\$100,000 - \$149,999	13.6%	-1.8%	
\$150,000 - \$199,999	4.5%	-1.0%	
\$200,000+	5.2%	-0.2%	

Bars show deviation from
Summit County

This infographic contains data provided by Esri, Esri and Infogroup. The vintage of the data is 2020, 2025.

© 2020 Esri

Stacy Tramonte

330 590 8248 • STramonte@pvccinc.com

Barbara Faciana

330 590 8230 • BFaciana@pvccinc.com

NAI Pleasant Valley

6155 Rockside Road, Suite 304
Independence, Ohio 44131
216 831 3310
naipvc.com

544

5 MILE DEMOGRAPHICS

KEY FACTS

157,820

Population



2.3

Average
Household Size

38.9

Median Age

\$48,512

Median Household
Income

EDUCATION

10%

No High School
Diploma

28%

High School
Graduate

29%

Some College



33%

Bachelor's/Grad/Pr
of Degree

BUSINESS



6,169

Total Businesses



118,731

Total Employees

EMPLOYMENT



67%

White Collar



20%

Blue Collar



13%

Services

16.7%

Unemployment
Rate

INCOME



\$48,512

Median Household
Income

\$29,500

Per Capita Income



\$42,975

Median Net Worth

Households By Income

The largest group: \$50,000 - \$74,999 (16.8%)

The smallest group: \$150,000 - \$199,999 (4.0%)

Indicator	Value	Difference	
<\$15,000	15.6%	+5.5%	
\$15,000 - \$24,999	11.4%	+1.8%	
\$25,000 - \$34,999	10.5%	+1.7%	
\$35,000 - \$49,999	13.5%	+0.5%	
\$50,000 - \$74,999	16.8%	-1.0%	
\$75,000 - \$99,999	11.9%	-2.6%	
\$100,000 - \$149,999	11.7%	-3.7%	
\$150,000 - \$199,999	4.0%	-1.5%	
\$200,000+	4.7%	-0.7%	

Bars show deviation from
Summit County

This infographic contains data provided by Esri, Esri and Infogroup. The vintage of the data is 2020, 2025.

© 2020 Esri

Stacy Tramonte

330 590 8248 • STramonte@pvccinc.com

Barbara Faciana

330 590 8230 • BFaciana@pvccinc.com

NAIPleasant Valley

6155 Rockside Road, Suite 304
Independence, Ohio 44131
216 831 3310
naipvc.com